

# SURVEY & REMONUMENTATION

DEC 01 1998

OTTAWA COUNTY REMONUMENTATION

SECTION

LAND CORNER RECORDATION CERTIFICATE

Filing Requirement of Act 74, Mich. P.A. 1970

For corners in

OTTAWA

(County)

Located In:

Corner Code #

1. Public Land Survey

T R  
T R  
T R  
T R

M-2-3 South

Witness Cor for M-2

Robinson Twp.

2. Property Controlling  
in Section

S 1 T 7N R 15W  
S T R  
S T R  
S T R

SEQUENTIAL  
CORNER # 3

3. Miscellaneous  
Property in Sec.

also T 7N, R 14W #2

RECORDED

98 SEP 29 PM 1:57

*Randy B. B. B.*  
REGISTER OF DEEDS  
OTTAWA COUNTY, MI

Register of Deeds Stamp & File Number

4. Lot No. \_\_\_\_\_, Recorded Plat \_\_\_\_\_

5. Private Claims \_\_\_\_\_

I, Randal J. Vugteveen, in a field survey on June 4, 1998 do hereby state that under requirements of P.A. 74, Michigan P.A. of 1970, the corner points mentioned in lines 1 and 2 above were in conformance with regulations and rules therefore as required in the current manual of survey instructions of the United States Department of the Interior, Bureau of Land Management or by a decree of a Court of Law and/or that the corner points mentioned in lines 3, 4 and 5 above were in conformance with the rules of the Michigan Board of Land Surveyors or by a Decree of a Court of Law; established, re-established, monumented, recovered, found as expressed below:

NOTE: Not more than 2 corners, all in the same town and range, may be recorded on this certificate.

	A	B	C	D	E	F	G	H	I	J	K	L	M
1													
2		6		5		4		3		2		1	
3													
4		7		8		9		10		11		12	
5													
6		18		17		16		15		14		13	
7													
8		19		20		21		22		23		24	
9													
10		30		29		28		27		26		25	
11													
12		31		32		33		34		35		36	
13													

A. Description of original monument and accessories and/or subsequent restoration:

M-2 GLO May, 1832

Calvin Britain

Corner falls in River set post between Ranges 14 & 15

24" White OAK N72°W 33 Links

28" White OAK S41°W 59 Links

B. Description of corner evidence found and/or method applied in restoring or reestablishing corner:

Reference Monument set on South side of the Grand River on a line between M-5 corner and M-1 corner

This position not established by original government surveyors. This monument is accepted as the best available evidence of the position of the East line of the SE 1/4 of Section 1, T7N, R15W

C. Description of monument for corner and accessories established to perpetuate locating the position of the corner:

M-2 Reference Monument set on South side of the Grand River on the East side Section 1 129.23' South of M-2 corner

Set 3/4" X 36" Bar and Remon cap on small ridge above River

Set Nail & Remon tag in South side quad 12" Maple Clump Az 310° 9.17'

Set Nail & Remon tag in West side 26" white oak Az 195° 22.99'

Set Nail & Remon tag in South side Twin 14" ASH Az 125° 4.67'

Set Nail & Remon tag in West side 16" Poplar Az 18° 42.30'

Water's edge Grand River (Normal Channel) Az 0° 85.0' +-

Signed by

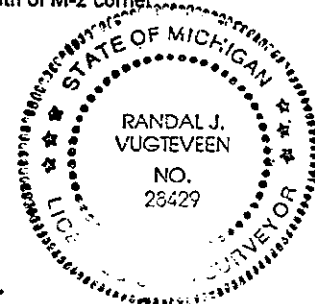
*Randal J. Vugteveen*

Surveyor's Michigan License No.

28429

Date

SEPT 24, 1998

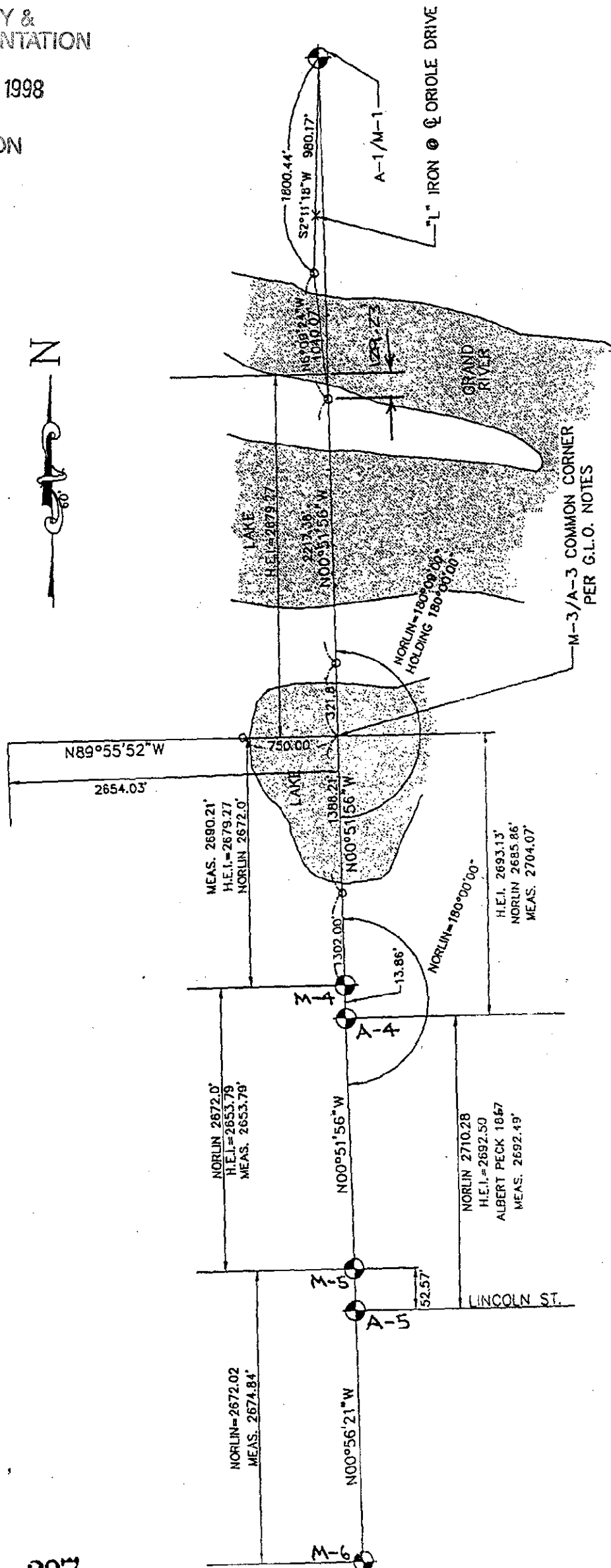


\$11.00 CORNER  
Receipt #13502

# SURVEY & REMONUMENTATION

DEC 01 1998

SECTION



M-5 TO M-1  
TOTAL = S0° 51'56\"E 10716.70'  
H.E.I. = 10,717.05'

NOR-LIN. INFORMATION FROM FIELD BOOK  
#361 OTTAWA COUNTY SURVEYOR'S RECORDS  
THEO. NOR. LIN. MAY 1920