

SURVEY & REMONUMENTATION

DEC 01 1998

OTTAWA COUNTY REMONUMENTATION

SECTION

LAND CORNER RECORDATION CERTIFICATE Filing Requirement of Act 74, Mich. P.A. 1970

For corners in

OTTAWA

(County)

Located in:

Corner Code #

1. Public Land Survey

T___ R___
T___ R___
T___ R___
T___ R___

M2-3 North Witness

cor for M-3

Robinson Twp.

2. Property Controlling
in Section

S1 T7N R15W
S___ T___ R___
S___ T___ R___
S___ T___ R___

SEQUENTIAL
CORNER #4

3. Miscellaneous
Property in Sec.

RECORDED

98 SEP 29 PM 1:57

Randy Vugteveen
REGISTER OF DEEDS
OTTAWA COUNTY, MI

Register of Deeds Stamp & File Number

4. Lot No. _____, Recorded Plat _____
5. Private Claims _____

I, Randal J. Vugteveen, in a field survey on June 4, 1998 do hereby state that under requirements of P.A. 74, Michigan P.A. of 1970, the corner points mentioned in lines 1 and 2 above were in conformance with regulations and rules therefore as required in the current manual of survey instructions of the United States Department of the Interior, Bureau of Land Management or by a decree of a Court of Law and/or that the corner points mentioned in lines 3, 4 and 5 above were in conformance with the rules of the Michigan Board of Land Surveyors or by a Decree of a Court of Law; established, re-established, monumented, recovered, found as expressed below:

NOTE: Not more than 2 corners, all in the same town and range, may be recorded on this certificate.

	A	B	C	D	E	F	G	H	I	J	K	L	M
1													
2	6		5		4		3		2		1		
3													
4	7		8		9		10		11		12		
5													
6	18		17		16		15		14		13		
7													
8	19		20		21		22		23		24		
9													
10	30		29		28		27		26		25		
11													
12	31		32		33		34		35		36		
13													

A. Description of original monument and accessories and/or subsequent restoration:

M-3 GLO May, 1832 Calvin Britian
Set corner
30" Pine N53°W 93 Links
10" White OAK S54°W 38 Links



Corner Common with A-3, T7N, R14W as per G.L.O. notes

B. Description of corner evidence found and/or method applied in restoring or reestablishing corner:

M-3 Corner falls in lake excavated sometime in the early nineteen seventies

Monument set on North side of lake on East line of Section 1

Position of 5344.00' North of M-5 corner as shown in field book #361 Ottawa County Surveyor Records Theo. Norlin 1920 and set on straight line between M-5 corner and M-1 corner

This position not established by original government surveyors. This monument is accepted as the best available evidence of the position of the East line of the SE 1/4 of Section 1, T7N, R15W

C. Description of monument for corner and accessories established to perpetuate locating the position of the corner:

M-3 Reference Monument set on North side excavated Lake on E. line of Sec 1 321.81' North of M-3 corner

Set 3/4" X 36" bar and Remon Cap

Set Nail & Remon tag in West side 8" Poplar Az 203° 32.70'

Set Nail & Remon tag in North side 10" Poplar Az 274° 132.92'

Set Nail & Remon tag in West side Twin 8" Poplar Az 49° 97.60'

Set Nail & Remon tag in South side 8" Poplar Az 130° 81.47'

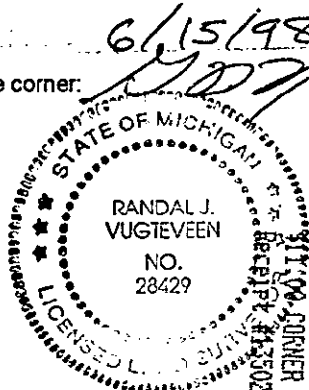
South side Lake water's Edge Az 0° 170.0'±

North side Lake water's Edge Az 180° 45.0'±

Signed by *Randy Vugteveen*

Date SEPT 24, 1998

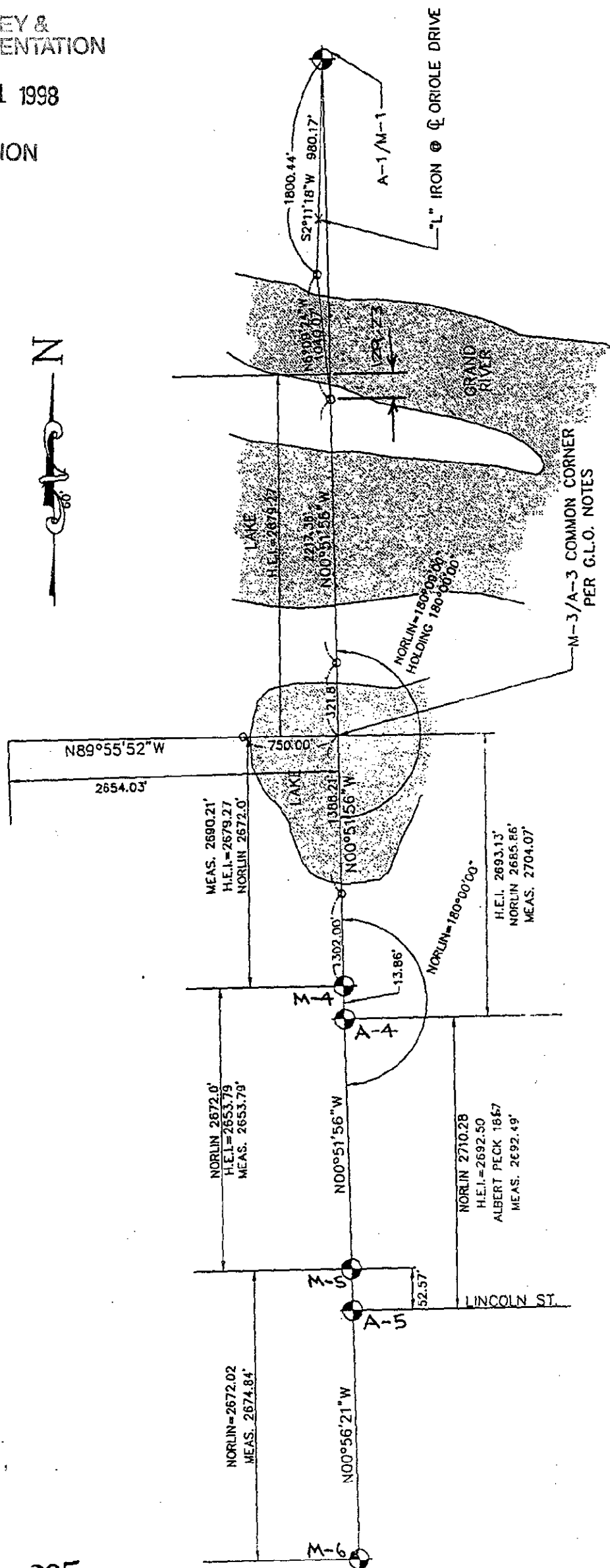
Surveyor's Michigan License No. 28429



SURVEY & REMONUMENTATION

DEC 01 1998

SECTION



M-5 TO M-1
TOTAL = S0° 51'56\"/>

NOR-UN. INFORMATION FROM FIELD BOOK
#361 OTTAWA COUNTY SURVEYOR'S RECORDS
THEO. NOR. LN. MAY 1920