

DEC 01 1998

SECTION

OTTAWA COUNTY REMONUMENTATION
LAND CORNER RECORDATION CERTIFICATE
Filing Requirement of Act 74, Mich. P.A. 1970

For corners in

OTTAWA

(County)

Located in:

Corner Code #

1. Public Land Survey

T___ R___ M3-4 South Witness
T___ R___ Cor to M-3
T___ R___ Robinson Twp.
T___ R___

2. Property Controlling
in Section

S12 T7N R15W

SEQUENTIAL
CORNER #5

3. Miscellaneous
Property in Sec.

S___ T___ R___
S___ T___ R___

RECORDED

98 SEP 29 PM 1:57

Randy Schell
REGISTER OF DEEDS
OTTAWA COUNTY, MI

Register of Deeds Stamp & File Number

4. Lot No. _____, Recorded Plat _____
5. Private Claims _____

I, Randal J. Vugteveen, in a field survey on June 4, 1998 do hereby state that under requirements of P.A. 74, Michigan P.A. of 1970, the corner points mentioned in lines 1 and 2 above were in conformance with regulations and rules therefore as required in the current manual of survey instructions of the United States Department of the Interior, Bureau of Land Management or by a decree of a Court of Law and/or that the corner points mentioned in lines 3, 4 and 5 above were in conformance with the rules of the Michigan Board of Land Surveyors or by a Decree of a Court of Law; established, re-established, monumented, recovered, found as expressed below:

NOTE: Not more than 2 corners, all in the same town and range, may be recorded on this certificate.

	A	B	C	D	E	F	G	H	I	J	K	L	M
1													
2	6		5		4		3		2		1		
3													
4	7		8		9		10		11		12		
5													
6	10		17		16		15		14		13		
7													
8	19		20		21		22		23		24		
9													
10	30		29		28		27		26		25		
11													
12	31		32		33		34		35		36		
13													

A. Description of original monument and accessories and/or subsequent restoration:

M-3 GLO May, 1832 Calvin Britain
Set Corner
30" Pine N53°W 93 Links
10" White OAK N54°W Links

* Corner Common with A-3 T7N, R14W as per GLO notes

B. Description of corner evidence found and/or method applied in restoring or reestablishing corner:

M-3 corner falls in Lake excavated sometime in the early nineteen seventies

Monument set on South side of Lake on East line
Section 12

Position created by using distance of 5344.0' North of M-5 corner as shown in field book #361 Ottawa County Surveyor Records by Theo. Norlin 1920 as set on Straight line between M-5 corner and M-1 corner

This position not established by original government surveyors. This monument is accepted as the best available evidence of the position of the East line of the NE 1/4 of Section 12, T7N, R15W

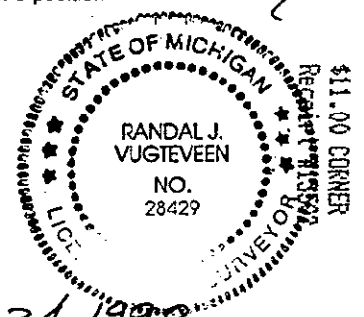
C. Description of monument for corner and accessories established to perpetuate locating the position of the corner:

M-3 Reference Monument set on the South side excavated Lake on the East side Section 12 1388.21' South of M-3 position

Set 3/4" X36" Bar with Remon Cap
Set Nail & Remon tag E Side 7" Poplar Az 180° 5.63'
Set Nail and Remon tag S side 5" Poplar Az 330° 5.60'
Set Nail & Remon tag Nly side 4" Poplar Az 155° 34.72'
Water's edge Az 45° 9.0'
Water's edge Az 0° 19.0'

Signed by *Randal J. Vugteveen*
Surveyor's Michigan License No. 28429

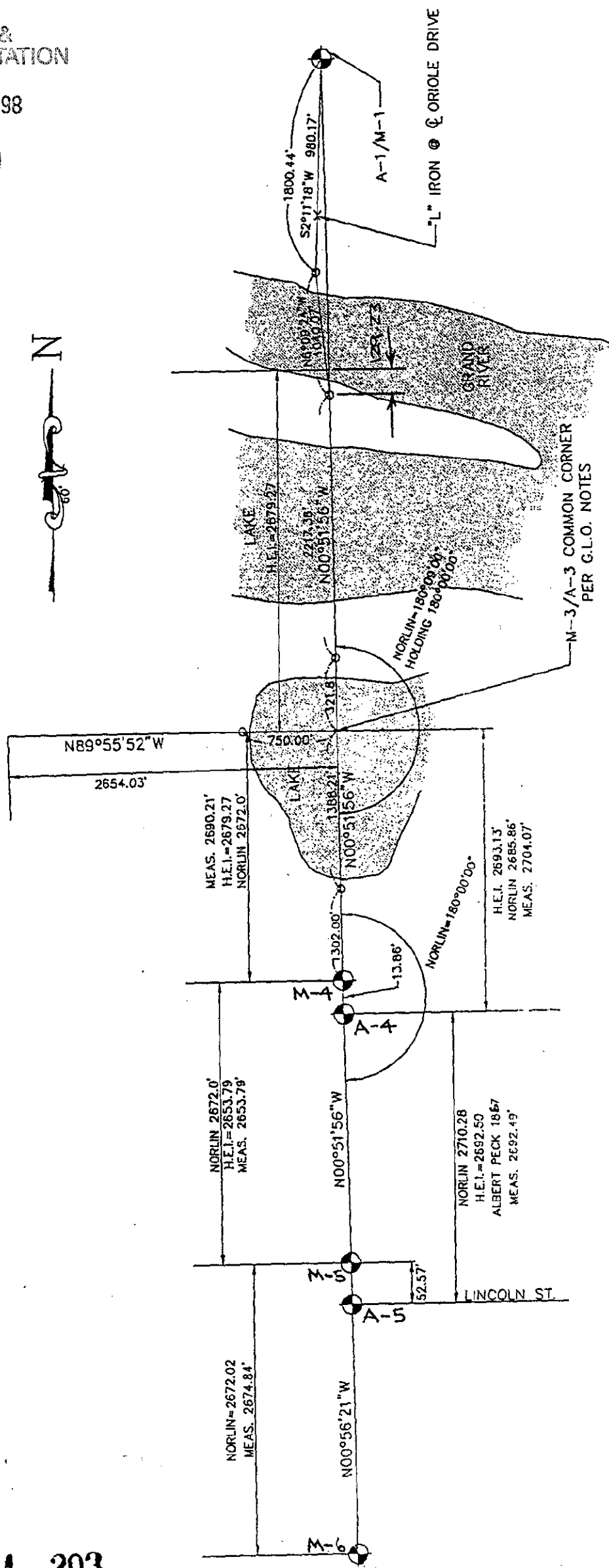
Date SEPT. 24, 1998



SURVEY & REMONUMENTATION

DEC 01 1998

SECTION



M-5 TO M-1
TOTAL = $S0^{\circ}51'56''E$ 10716.70'
H.E.I. = 10,717.05'

NOR-LIN. INFORMATION FROM FIELD BOOK
#361 OTTAWA COUNTY SURVEYOR'S RECORDS
THEO. NOR. LIN. MAY 1920