

# SURVEY & REMONUMENTATION

FEB 27 1998

## OTTAWA COUNTY REMONUMENTATION LAND CORNER RECORDATION CERTIFICATE Filing Requirement of Act 74, Mich. P.A. 1970

RECORDED

97 DEC -8 AM 11:33

*Greg S. Hiltner*  
REGISTER OF DEEDS  
OTTAWA COUNTY, MI

Register of Deeds Stamp & File Number

For corners in  
Ottawa

(County)

Located In:

Corner Code #

1. Public Land Survey

T8N R16W

H, I-4

T R

East 1/4 corner

T R

Section 10

T R

Reference monument

2. Property Controlling  
in Section

S10 T8N R16W

SEQUENTIAL

S T R

CORNER #4

3. Miscellaneous  
Property in Sec.

S T R

S T R

4. Lot No. \_\_\_\_\_, Recorded Plat \_\_\_\_\_

5. Private Claims \_\_\_\_\_

I, Steve Lampen, in a field survey on November 29, 1997, do hereby certify that under requirements of P.A. 74, Michigan P.A. of 1970, the corner points mentioned in lines 1 and 2 above were in conformance with regulations and rules therefore as required in the current manual of survey instructions of the United States Department of the Interior, Bureau of Land Management or by a decree of a Court of Law and/or that the corner points mentioned in lines 3, 4 and 5 above were in conformance with the rules of the Michigan Board of Land Surveyors or by a Decree of a Court of Law; established, re-established, monumented, re-monumented, recovered, found as expressed below:

**NOTE:** Not more than 4 corners, all in the same town and range, may be recorded on this certificate.

A. Description of original monument and accessories and/or subsequent restoration:

I-4  
G.L.O. - Brookfield - 1837  
North between Sections 10 and 11  
25.25 leave Bayou - Sycamore 30 corner  
29.00 to Beech, Beech 10  
50.90 leave Bayou and set post  
79.40 enter Bayou, Birch 6 corner  
80.00 corner Sections 3, 2, 10 and 11 on ice  
East and West 1/4 line Section 10 and the Northwest corner  
Government Lot 3 are shown on Surveys by Peck 1897 - 1904  
David Greer L2 Surveys P 964  
Tom Joiner Liber 6 Surveys Page 571

B. Description of corner evidence found and/or method applied in restoring or reestablishing corner:

I-4  
Not monumented by G.L.O. Survey. Calculated position of I-4 by intersecting the East and West 1/4 line of Section 10 as shown in Liber 2 Surveys Page 964 as monumented and occupied with the East line of Section 10 using I-5 and the G.L.O. meander post now Point A of the Plat of Summerland Park.

Set Ottawa County Remonumentation iron and cap on the East and West 1/4 line of Section as a reference monument.

This corner not monumented by the original G.L.O. Survey. Calculated position of I-4 is accepted as the best position of the corner.

See sketch on back.

P.A. 345 OTTAWA COUNTY  
PEER APPROVED 12-1-97

C. Description of monument for corner and accessories established to perpetuate locating the position of the corner:

I-4  
Reference monument - Az. = Michigan State Plane grid direction  
Ottawa County Remonumentation iron and cap on the East and West 1/4 line of Section 10  
Remonumentation tag in West side 18" Poplar 163° 36' 22.25'  
Remonumentation tag in Northeast side 30" Oak 210° 05' 49.37'  
Remonumentation tag in East side 30" Oak 179° 19' 70.72'  
Southeast corner concrete cap on brick pillar 8° 54' 18.96'  
West shore Spring Lake 91° 08' 38'±  
I-4 91° 08' 08" 244.00'  
Northwest corner Government Lot 3 = Northwest corner Northeast 1/4 SE 1/4 Section 10 271° 08' 08" 1048.74'

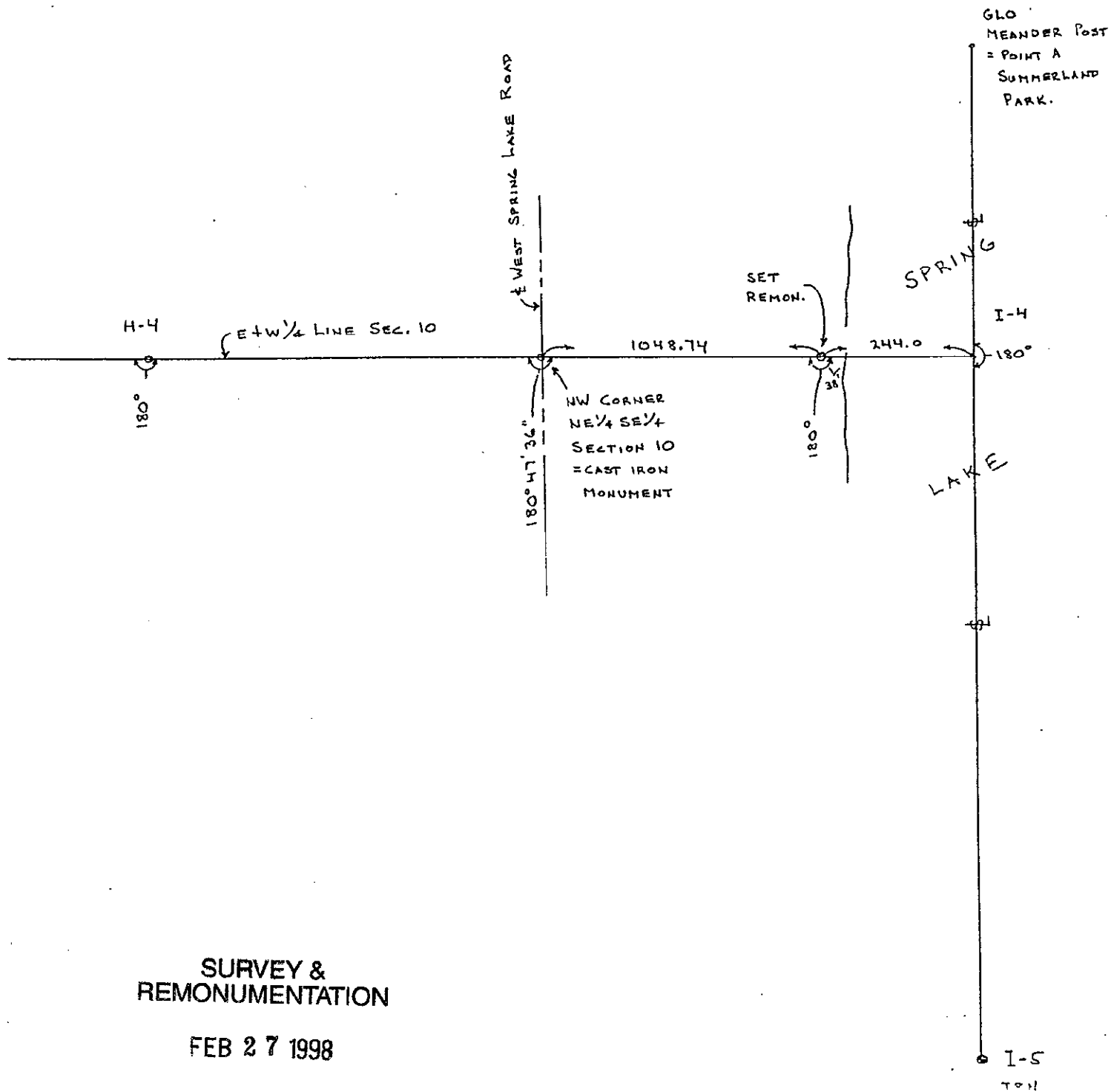


Signed by Steven Lampen

Date DECEMBER 2, 1997

Surveyor's Michigan License No. 37279

FORM APPROVED BY MICHIGAN STATE BOARD OF LAND SURVEYORS, JAN. 28, 1971  
REVISED MAY 14, 1971  
REVISED JAN., 1988  
ADAPTED FOR WORD PROCESSING MARCH, 1988



SURVEY &  
REMONUMENTATION

FEB 27 1998

SECTION