

SURVEY & REMONUMENTATION

FEB 27 1998

OTTAWA COUNTY REMONUMENTATION LAND CORNER RECORDATION CERTIFICATE Filing Requirement of Act 74, Mich. P.A. 1970

SECTION

For corners in

Ottawa

(County)

Located In:

Corner Code #

RECORDED

97 DEC -8 AM 11:32

1. Public Land Survey

T8N R16W

C, D-7

North 1/4 corner

Section 20

Reference Monument

SEQUENTIAL

CORNER #9

2. Property Controlling in Section

S 17 T8N R16W
S 20 T8N R16W

3. Miscellaneous Property in Sec.

S T R
S T R

Sam A. Hilt
REGISTER OF DEEDS
OTTAWA COUNTY, MI

Register of Deeds Stamp & File Number

4. Lot No. Recorded Plat

5. Private Claims

I, Steve Lampen, in a field survey on November 24, 1997, do hereby certify that under requirements of P.A. 74, Michigan P.A. of 1970, the corner points mentioned in lines 1 and 2 above were in conformance with regulations and rules therefore as required in the current manual of survey instructions of the United States Department of the Interior, Bureau of Land Management or by a decree of a Court of Law and/or that the corner points mentioned in lines 3, 4 and 5 above were in conformance with the rules of the Michigan Board of Land Surveyors or by a Decree of a Court of Law; established, re-established, monumented, re-monumented, recovered, found as expressed below:

NOTE: Not more than 4 corners, all in the same town and range, may be recorded on this certificate.

A. Description of original monument and accessories and/or subsequent restoration:

D-7
G.L.O. - Brookfield - 1837
West between Sections 17 and 20
20.00 in river to marshy island. Set post
33.00 over to West side of island. Post in marsh
43.50 right bank Grand River set post
80.00 corner Sections 17, 18, 19 and 20
Black Oak 20 corner

Section line between Sections 17 and 20 is shown on Plat of Storrs and Co. - 1869
Survey by Carl Bowen - 1935
Survey of Harbor Island - 1936
Triangulation Survey - 1959
Section line was surveyed by David Greer No. 16042 in late 1960's.

B. Description of corner evidence found and/or method applied in restoring or reestablishing corner:

D-7
Found no field evidence or Survey record that the original G.L.O. meander posts had ever been located. Found no monumentation from the Plat of Storrs and Co. or surveys of 1935, 1936 and 1959. Found monumentation by David Greer on West side of Grand River on line between C-7 and E-7.

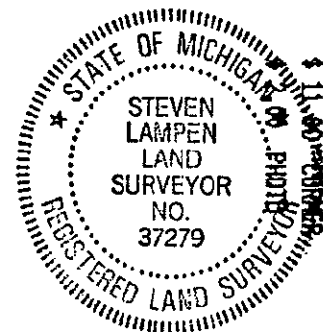
Calculated the position of D-7 mid-way and on line between C-7 and E-7. Set Ottawa County Remonumentation iron and cap as a reference monument on the section line between Sections 17 and 20 on the West and East sides of the Grand River. See sketch on back.

This corner not monumented by the original G.L.O. Survey. Calculated position of D-7 is accepted as the best position of the corner.

P.A. 345 OTTAWA COUNTY
PEER APPROVED 12-1-97

C. Description of monument for corner and accessories established to perpetuate locating the position of the corner:

D-7 Reference monument
Ottawa County Remonumentation iron and cap on the section line between Sections 17 and 20
Westerly bank of the Grand River 92° 105'±
Remonumentation tag in West side 10" Pine 193° 89.90'
Remonumentation tag in West side 4" Poplar 177° 54.95'
Remonumentation tag in South side 10" Oak 268° 68.00'
D-7 91° 55' 24" 460.40'
C-7 271° 55' 24" 2133.84'

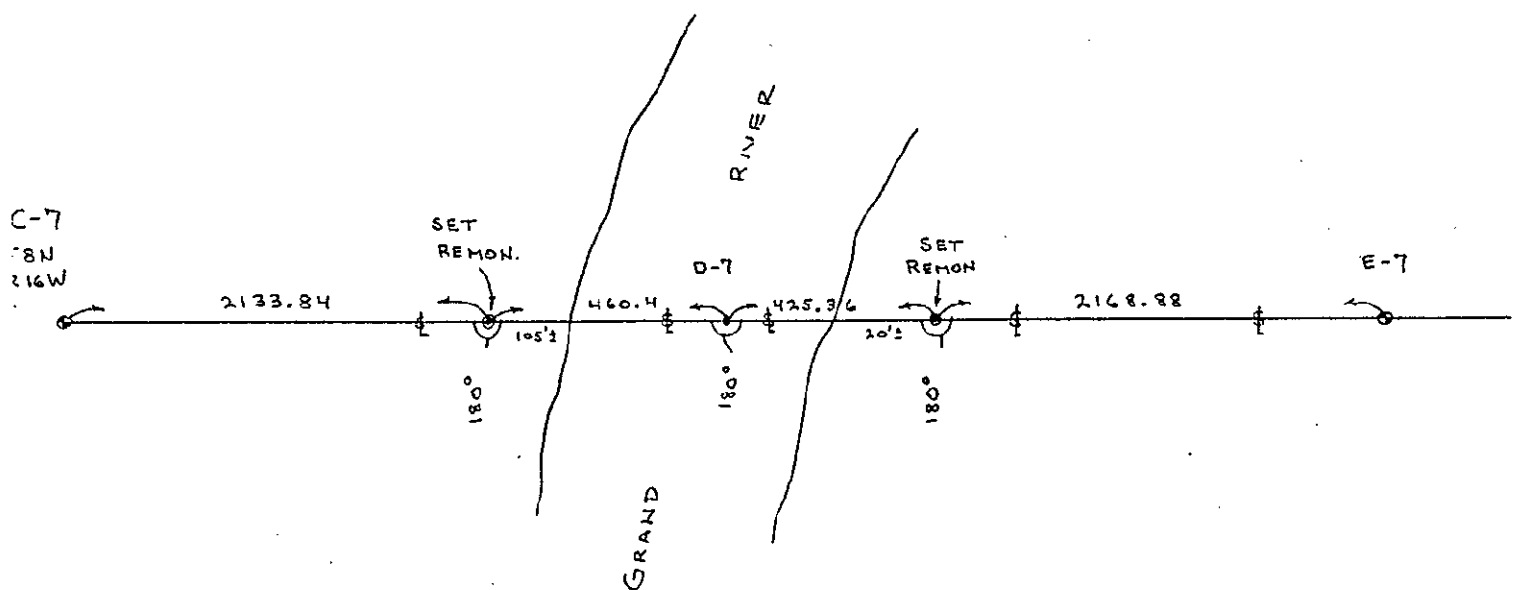


Signed by *Steven Lampen*

Date DECEMBER 1, 1997

Surveyor's Michigan License No. 37279

2



SURVEY &
REMONUMENTATION

FEB 27 1998

SECTION