

LAND CORNER RECORDATION CERTIFICATE  
Filing Requirement of Act 74, Mich. P.A. 1970

JUDITH D. ROEHM  
Ontonagon County  
Page of 1  
SEN Date 10/27/1999 Time 10:15:16  
RECORDING FEE: 3.00

For corners in

Ontonagon County Located in: Corner Code #  
1. Public Land Survey T51N R39W B/C-7 #00/  
T R  
T R  
T R  
2. Property Controlling S T R  
in Section S T R  
3. Miscellaneous S T R  
Property in Sec. S T R  
4. Lot No. , Recorded Plat  
5. Private Claims

SURVEY &  
REMONUMENTATION  
MAR 28 2000  
SECTION

Register of Deeds Stamp & File Number

	A	B	C	D	E	F	G	H	I	J	K	L	M
1													
2	6		5		4		3		2		1		
3													
4	7		8		9		10		11		12		
5													
6	18		17		16		15		14		13		
7													
8	19		20		21		22		23		24		
9													
10	30		29		28		27		26		25		
11													
12	31		32		33		34		35		36		
13													

I, Joseph C. Domitrovich, in a field survey on October 13, 1999, do hereby state that under requirements of P.A. 74, Michigan P.A. of 1970, the corner points mentioned in lines 1 and 2 above were in conformance with regulations and rules therefore as required in the current manual of survey instructions of the United States Department of the Interior, Bureau of Land Management or by a decree of a Court of Law and/or that the corner points mentioned in lines 3, 4 and 5 above were in conformance with the rules of the Michigan Board of Land Surveyors or by a Decree of a Court of Law; established, re-established, monumented, recovered, found as expressed below:

NOTE: Not more than 2 corners, all in the same town and range, may be recorded on this certificate.

A. Description of original monument and accessories and/or subsequent restoration:

(B/C-7) Meander Corner on Right Bank of Ontonagon River, Common to Sec. 18 & 19, T51N, R39W

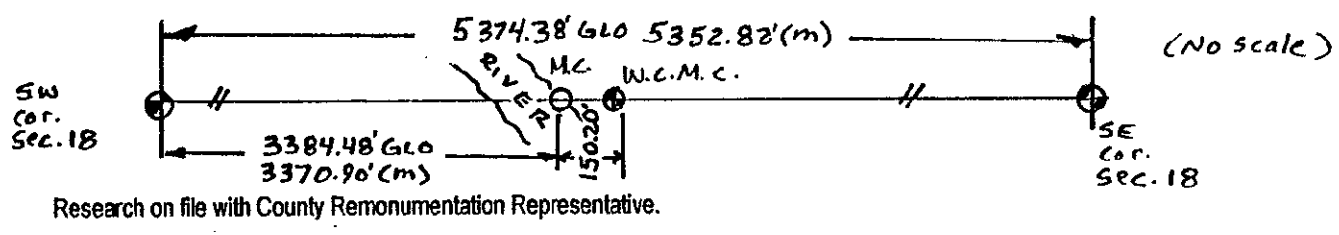
1845- William A. Burt set a post on the right bank of the Ontonagon River, 51.28 chains (3384.48') East of the Southwest Corner of Section 18.  
Ties: 12" Sugar N 68°E 23 links

I found no record of subsequent restoration

DEER GROUP APPROVED  
Earl W. Applekamp  
COUNTY REMONUMENTATION  
10-14-99

B. Description of corner evidence found and/or method applied in restoring or reestablishing corner:

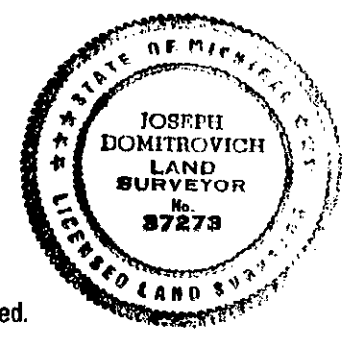
I found no remains of the original corner or accessories which have been destroyed by erosion from the Ontonagon River. I re-established a position for the Meander Corner by Single Proportionate measurement but was unable to monument this position since it falls in the Ontonagon River. I set a Witness Corner to the Meander Corner N 89°20'16" E on the Section Line at a distance of 150.20' from the true Meander Corner. (See Sketch)



C. Description of monument for corner and accessories established to perpetuate locating the position of the corner:

Witness Corner to the Meander Corner is a 3/4" x 48" aluminum rod with a 3" diameter aluminum cap stamped to read: COUNTY REMONUMENTATION; T51N., R39W.; S. 18, S.19; W.C.M.C.; 1999; PS 37273. Corner falls 140' +/- East of the Right Bank of the Ontonagon River.

4" Hemlock	N 06°E	6.95'
4" Hemlock	S 70°E	17.18'
Steel sign rail	South	0.87' (to face)
5" Cedar	N 40°W	11.34'
SW Cor. Sec. 18	S 89°20'16"W	3521.11'
SE Cor Sec. 18	N 89°20'16"E	1831.72'



NOTE: Bearings to witness objects are magnetic. Distances are to a nail in side of the witness object unless noted.

Signed by Joseph C. Domitrovich  
Surveyor's Michigan License No. 37273

Date 10-14-99