

LAND CORNER RECORDATION CERTIFICATE
Filing Requirement of Act 74, Mich. P.A. 1970

For corners in

Ontonagon
 (County)

Located In:

Corner Code #

- | | | |
|------------------------------------|-----------------------------------|--------------------|
| 1. Public Land Survey | T <u>53N</u> R <u>38W</u> | <u>17</u> |
| | T _____ R _____ | _____ |
| | T _____ R _____ | _____ |
| | T _____ R _____ | _____ |
| 2. Property Controlling in Section | S _____ T <u>53N</u> R <u>38W</u> | <u>WC N. of 17</u> |
| | S _____ T _____ R _____ | _____ |
| 3. Miscellaneous Property in Sec. | S _____ T _____ R _____ | _____ |
| | S _____ T _____ R _____ | _____ |

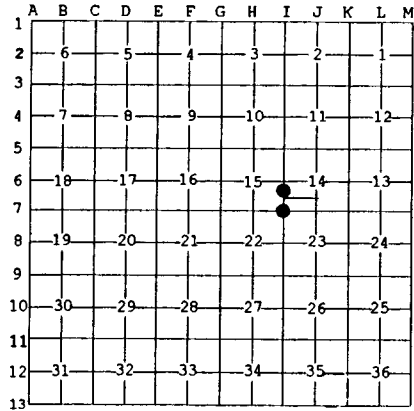
Register of Deeds Stamp & File Number

4. Lot No. _____, Recorded Plat _____
 5. Private Claims _____

May 01 2000

I, Stephan J. Szyszkoski, in a field survey on _____, 19____ do hereby state that under requirements of P.A. 74, Michigan P.A. of 1970, the corner points mentioned in lines 1 and 2 above were in conformance with regulations and rules therefore as required in the current manual of survey instructions of the United States Department of the Interior, Bureau of Land Management or by a decree of a Court of Law and/or that the corner points mentioned in lines 3, 4 and 5 above were in conformance with the rules of the Michigan Board of Land Surveyors or by a Decree of a Court of Law, established, re-established, monumented, recovered, found as expressed below:

NOTE: Not more than 2 corners, all in the same town and range, may be recorded on this certificate.



A. Description of original monument and accessories and/or subsequent restoration:

(17) Section corner common to 14-15-22-23. Reestablished in 1965 by Billy D. Buckler, RLS. 1" pipe with 4" aluminum cap. No witness trees made.

(WC N. of 17) Witness corner. A point on the section line between sections 14-15. Not established in the original survey. Established in 1965 by Billy D. Buckler, RLS. 1" pipe with 4" aluminum cap. 24" W.Pine S50W 35 links, 16" W.Pine S56E 56.5 links. This corner previously recorded by Buckler as "Meander corner between Sections 14-15 on Lake Superior".

B. Description of corner evidence found and/or method applied in restoring or reestablishing corner:

(17) Recovered the 1965 monument in good condition, adjacent to Buckler's squared cedar post. Bearings to 1965 corners N 02 deg 55'50"E 1358.75' and S 03 deg 03'08"W 2632.23' as well as my measure to 1/4 cor. east (2731.2 M, 2733.1 BDB) confirm that the position of the monument is the 1965 position (bearings above are NAD83 - 1994 adjustment grid bearings).

(WC N. of 17) The 1965 monument was not recovered. Found a squared and scribed post at record bearing and distance from the 1965 witness trees. The W.Pine witness SE is now a windthrow, the W.Pine SW is in good condition. Remonumented the corner at the position of the post with a 1" IDx 32" iron pipe capped with a 4" dia. cast aluminum MDNR tablet, stamped "Meander Corner Sec 15 Sec 14 PS33986 5-1-00". This monument is on the section line between 14&15 and 1358.75' North of corner 17.

C. Description of monument for corner and accessories established to perpetuate locating the position of the corner:

(17) Found 1" pipe with 4" alum. cap. Blazed and scribed the following new bearing trees:

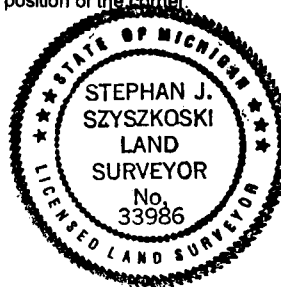
- | | |
|------------------------|-----------|
| 38" Cedar N37E 162.3' | "S14 NBT" |
| 12" Balsam N76E 117.0' | do |
| 20" Maple N27W 128.4' | "S15 NBT" |

Placed new squared cedar post 1.0' N'ly
 Bearings are magnetic. Dist. to notch in lower blaze.

(WC N. of 17) Set 1" pipe with 4" MDNR cap. Blazed and scribed the following new bearing trees:

- | | |
|-----------------------|---------|
| 7" Hemlock S62E 56.6' | "MC 8T" |
| 5" Maple S10E 18.7' | "MC 8T" |
| 9" Maple S31W 35.1' | "MC 8T" |

The 1965 wit:
 W. Pine S55W 23.1' overgrown blazes.
 Placed a squared cedar post adjacent.
 Bearings are magnetic. Distances to notch in lower blaze.



Signed by Stephan J. Szyszkoski
 Surveyor's Michigan License No. 33986

Date 8/15/00

For the Michigan Department of Natural Resources - Forest Management Division