

**LAND CORNER RECORDATION CERTIFICATE**  
**Filing Requirement of Act 74, Mich. P.A. 1970**

For corners in

Ontonagon  
 (County)

Located In:

Corner Code #

- |                                    |                                   |                    |
|------------------------------------|-----------------------------------|--------------------|
| 1. Public Land Survey              | T <u>53N</u> R <u>38W</u>         | <u>J7</u>          |
|                                    | T _____ R _____                   | _____              |
|                                    | T _____ R _____                   | _____              |
|                                    | T _____ R _____                   | _____              |
| 2. Property Controlling in Section | S _____ T <u>53W</u> R <u>38W</u> | <u>WC N. of K7</u> |
|                                    | S _____ T _____ R _____           | _____              |
| 3. Miscellaneous Property in Sec.  | S _____ T _____ R _____           | _____              |
|                                    | S _____ T _____ R _____           | _____              |

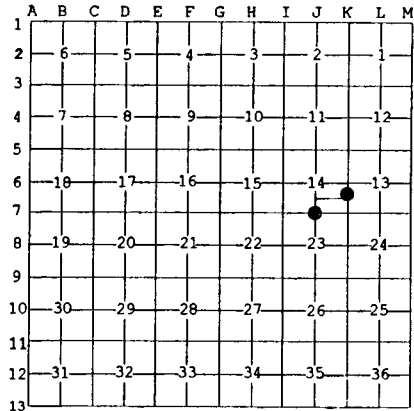
Register of Deeds Stamp & File Number

4. Lot No. \_\_\_\_\_, Recorded Plat \_\_\_\_\_  
 5. Private Claims \_\_\_\_\_

J7 May 01 2000  
 WC Apr 24 2000

I, Stephan J. Szyszkoski, in a field survey on \_\_\_\_\_, 19\_\_\_\_ do hereby state that under requirements of P.A. 74, Michigan P.A. of 1970, the corner points mentioned in lines 1 and 2 above were in conformance with regulations and rules therefore as required in the current manual of survey instructions of the United States Department of the Interior, Bureau of Land Management or by a decree of a Court of Law and/or that the corner points mentioned in lines 3, 4 and 5 above were in conformance with the rules of the Michigan Board of Land Surveyors or by a Decree of a Court of Law, established, re-established, monumented, recovered, found as expressed below:

**NOTE: Not more than 2 corners, all in the same town and range, may be recorded on this certificate.**



**A. Description of original monument and accessories and/or subsequent restoration:**

(J7) Quarter corner common to 14-23. Remonumented in 1965 by Billy D. Buckler, RLS. 1" pipe with 4" brass cap. 11" Cedar N89E 47 links, 13" W.Pine N05W 84.5 links.  
 (WC N. of K7) Witness corner. A point on the section line between sections 13 and 14, north of Section corner 13-14-23-24. This corner not established in the original survey. Established in 1965 by Billy D. Buckler, RLS (previously recorded by Buckler as "meander corner between Secs. 13-14"). 1" pipe with 4" aluminum cap. 13" W. Pine N30E 08 links, 9" W. Pine West 59.5 links.

**B. Description of corner evidence found and/or method applied in restoring or reestablishing corner.**

(J7) Recovered and accepted the 1965 monument, which is in good condition and at record bearing and distance from the 1965 witness trees, both in good condition.  
 (WC N. of K7) The 1965 monument was recovered disturbed, at the bottom of a bayou 30' north of the corner location. Reestablished the corner at the 1965 position as determined by the 1965 witnesses. The W.P. NE now a 1' high stump with scribing visible, the W.P. West in good condition with scribing visible. Placed a 1" ID x 36" iron pipe capped with a 4" dia. cast aluminum MDNR tablet stamped "Meander Corner Sec. 14 Sec. 13 PS 33986 4/24/00". The monument is on the Sec. line between 13 & 14 and 1318.98' N. of corner K7.

**C. Description of monument for corner and accessories established to perpetuate locating the position of the corner:**

(J7) Found 1" pipe with 4" brass cap.	(WC N. of K7) Set 1" pipe with 4" MDNR cap. Blazed and scribed the following new bearing trees:
Blazed and scribed the following new bearing trees:	
9" Cedar S18E 15.5' "1/4S N8T"	13" Hemlock N77E 40.0' "MC BT"
9" Hemlock N81W 23.2' do	14" W.Pine S04E 13.3' do
The 1965 wits:	12" W.Pine S69 1/2W 29.9' do
20" W. Pine N10E 56.1' overgrown blaze	fd. 12" W.Pine N88W 39.3' 1965 wit.
10" Cedar S88E 31.4' scribing visible	Placed sq'd cedar post adjacent.
Bearings are magnetic. Dist. to notch in lower blaze.	Bearings are magnetic. Dist. to notch in lower blaze.



Signed by Stephan J. Szyszkoski  
 Surveyor's Michigan License No. 33986

Date 8/15/00

For the Michigan Department of Natural Resources - Forest Management Division