

LAND CORNER RECORDATION CERTIFICATE

Filing Requirement of Act 74, Mich. PA 1970

For Corners In: Presque Isle (County)	Located In	Corner Code #
1. Public Land Survey	T 36N R 2E	E-8
	T 36N R 2E	E-9
2. Property Controlling in Section	S T R	
	S T R	
3. Miscellaneous Property in Section	S T R	
	S T R	

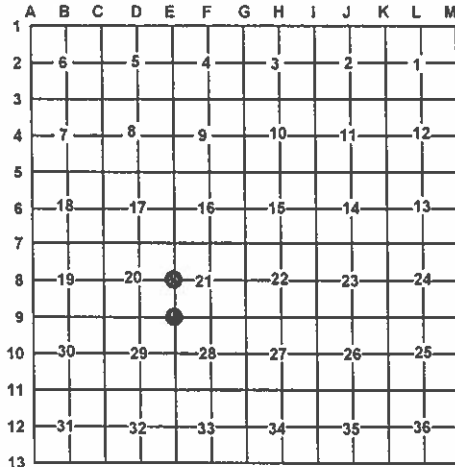
Register of Deeds Stamp & File Number

4. Lot No: Recorded Plat:

5. Private Claims:

I, Carl T. Kiiskila, in a field survey on August 11, 2009 do hereby state that under requirements of PA 74, Michigan PA of 1970, the corner points mentioned in lines 1 and 2 above were in conformance with regulations and rules therefore as required in the current manual of survey instructions of the United States Department of the Interior, Bureau of Land Management or by a decree of a Court of Law and/or that the corner points mentioned in lines 3, 4 and 5 above were in conformance with the rules of the Michigan Board of Land Surveyors or by a Decree of a Court of Law; established, re-established, monumented, recovered, found as expressed below:

NOTE: Not more than 2 corners, all in the same town and range, may be recorded on this certificate.



A. Description of original monument and accessories and/or subsequent restoration:

E-8 ¼ Corner comm. to sec.'s 20 & 21, T36N,R2E

1856 – GLO – George H. Cannon – Set quarter section post.
W.Pine 24" S76°W 93 links
W.Pine 18" S79°E 29 links

1994 – L.C.R.C – L.311, p.128 – Norman J. Quaine, P.S.#33984 –
Found 1 ½" Pipe. Placed ½"CIR#15410 in center of pipe.
S75°W 53.89' 18" W.Pine
N11°W 36.79' 14" R.Pine
N27°E 16.89' 10" W.Pine
S71°E 13.65' 8" W.Pine

E-9 Sec. Corner comm. to sec.'s 20, 21,28 & 29, T36N,R2E

1856 – GLO – George H. Cannon – Gov. Dependent Resurvey
Cedar 8" N15°E 22 links
Cedar 8" S15°W 06 links
Unknown Date – R.S. Scott, P.S.#5058 – 2" Pipe
N45°E 48.00' DNR Post; S30°E 36.10' 12" W.Pine; N70°W 36.62' 6" W.Pine
1978 – L.C.R.C.#352 – Delmer E. Porter, P.S.#15410 – 2" Pipe lost. Reset position with 4"conc. Mon. with brass cap from available wits.
N51°E 48.00' DNR Post; S26°E 36.10' 12" W.Pine
1994 – Remon L.C.R.C – L.311, p.129 – Norman J. Quaine, P.S.#33984 –
Found conc. mon. & P.I. Co. Remon brass cap.
N51°E 48.00' Red Top DNR Post; S26°E 36.10' 12" W.Pine;
N39°W 36.92' 8" W.Pine

B. Description of corner evidence found and/or method applies in restoring or re-establishing corner:

E-8 ¼ Corner comm. to sec.'s 20 & 21, T36N,R2E

Found ½" CIR#15410 in center of 1 ½" Pipe per L.C.R.C. L.311, p.128.
Corner is 3' East of C/L N-S 2-track. Accepted found iron as the best available evidence for the position of the original corner. Found no other evidence to dispute its location.

E-9 Sec. Corner comm. to sec.'s 20, 21,28 & 29, T36N,R2E

Found 4" conc. Mon. with 3" brass cap down 3" below grade per L.C.R.C.#352. Corner is 2' East of C/L N-S trail road. Accepted found conc. Mon. as the best available evidence for the position of the original corner. Found no other evidence to dispute the location for the corner.

C. Description of monument for corner and accessories established to perpetuate locating the position of the corner:

E-8 ¼ Corner comm. to sec.'s 20 & 21, T36N,R2E

Fd. ½" CIR#15410 in center 1 ½" Iron Pipe

Wit: *N21°E 16.85' to set N&T on E side 15" W.Pine
*S58°E 13.70' to set N&T on N side 10" W.Pine
*S32°W 53.97' to set N&T on W side 18" W.Pine
*N03°W 36.85' to set N&T on E side 19" R.Pine
Set Blue Carsonite Post w/Loc. Tag 15' West

* Previous recorded witness.

E-9 Sec. Corner comm. to sec.'s 20, 21,28 & 29, T36N,R2E

Fd. 4" dia. Conc. Mon. with 3" dia. stamped brass cap.

Wit: *N51°E 48.00' to fd. Red Top DNR Post
*S26°E 36.27' to set N&T at old N&T on NE side 14" W.Pine
S50°W 30.37' to set N&T at old N&T on NW side 9" R.Maple
*N39°W 36.90' to set N&T at old N&T on N side 10" W.Pine
N20°W 31.00' to set N&T at old N&T on W side 12" Cedar
Set Blue Carsonite Post 15' West.

* Previous recorded witness.

Surveyor's Michigan License No.:

33981

