

SCHOOLCRAFT COUNTY  
PEER GROUP APPROVED

DATE 10/15/97

LAND CORNER RECORDATION CERTIFICATE  
Filing Requirement of Act 74, Mich. P.A. 1970

SURVEY &  
REMONUMENTATION

JAN 21 1998

For corners in

SECTION

Schoolcraft Located In: Corner Code #  
(County)

1. Public Land Survey T42N R16W K-12  
T R  
T R  
T R

2. Property Controlling S T R  
in Section S T R

3. Miscellaneous S T R  
Property in Sec. S T R

Received & Filed this 23 day of  
Dec. 19 97 at 3:03 P M

Sigrid I. Hedberg  
Schoolcraft Co. Reg. of Deeds

Register of Deeds Stamp & File Number

4. Lot No. , Recorded Plat  
5. Private Claims

I, Thomas P. O'Brien, in a field survey on Oct. 29, 1997 do hereby state that under requirements of P.A. 74, Michigan P.A. of 1970, the corner points mentioned in lines 1 and 2 above were in conformance with regulations and rules therefore as required in the current manual of survey instructions of the United States Department of the Interior, Bureau of Land Management or by a decree of a Court of Law and/or that the corner points mentioned in lines 3, 4 and 5 above were in conformance with the rules of the Michigan Board of Land Surveyors or by a Decree of a Court of Law; established, re-established, monumented, recovered, found as expressed below:

NOTE: Not more than 2 corners, all in the same town and range, may be recorded on this certificate.

	A	B	C	D	E	F	G	H	I	J	K	L	M
1													
2		6		5		4		3		2		1	
3													
4		7		8		9		10		11		12	
5													
6		18		17		16		15		14		13	
7													
8		19		20		21		22		23		24	
9													
10		30		29		28		27		26		25	
11													
12		31		32		33		34		35	X	36	
13													

A. Description of original monument and accessories and/or subsequent restoration:

K-12 East 1/4 Corner Section 35  
Aug. 12, 1850 - Algernon Merryweather D.S. set qr. section post.  
Sugar 6 in. S50W 20 links Birch 7 in. N30E 39 links

Jan. 4, 1974 - John R. Radcliffe found iron. LCRC recorded Liber 1 page 22.

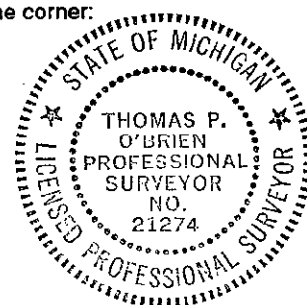
B. Description of corner evidence found and/or method applied in restoring or reestablishing corner:

K-12 Oct. 29, 1997 - Thomas P. O'Brien P.S. recovered iron as found by John R. Radcliffe on Jan. 4, 1974. Witnesses found verify corner location. Reset iron with Schoolcraft County Monument.

C. Description of monument for corner and accessories established to perpetuate locating the position of the corner:

K-12 Schoolcraft County Monument stamped to identify.

Witnesses : Power Pole - S60°W - 33.00'  
10" Maple - N50°W - 74.17'  
12" W. Pine - S17°E - 62.29'  
S.E. Garage Corner - N35°E - 68.20'



Signed by Thomas P. O'Brien P.S.  
Surveyor's Michigan License No. 21274

Date December 19, 1997

LIBER 4 PAGE: 149