

LAND CORNER RECORDATION CERTIFICATE
Filing Requirement of Act 74, Mich. P.A. 1970 as Amended

For corners in

Schoolcraft (County)	Located In:	Corner Code #
1. Public Land Survey	T 43N R 14W	C8
	T R	
	T R	
2. Property Controlling in Section	S T R	
	S T R	
	S T R	
3. Miscellaneous Property in Sec.	S T R	
	S T R	
4. Lot No. , Recorded Plat		
5. Private Claims		

Register of Deeds Stamp & File Number

	A	B	C	D	E	F	G	H	I	J	K	L	M
1													
2	6		5		4		3		2		1		
3													
4	7		8		9		10		11		12		
5													
6	18		17		16		15		14		13		
7													
8	19		20		21		22		23		24		
9													
10	30		29		28		27		26		25		
11													
12	31		32		33		34		35		36		
13													

I, Stephan J. Szyszkoski, in a field survey on June 10 2013 do hereby state that under requirements of P.A. 74, Michigan P.A. of 1970, the corner points mentioned in lines 1 and 2 above were in conformance with regulations and rules therefore as required in the current manual of survey instructions of the United States Department of the Interior, Bureau of Land Management or by a decree of a Court of Law and /or that the corner points mentioned in lines 3, 4 and 5 above were in conformance with the rules of the Michigan Board of Land Surveyors or by a Decree of a Court of Law; established, re-established, monumented, recovered, found as expressed below:

NOTE: Not more than 2 corners, all in the same town and range, may be recorded on this certificate.

A. Description of original monument and accessories and/or subsequent restoration:

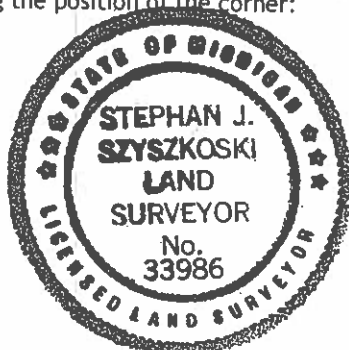
Quarter corner common to Sections 19 and 20. 1961 - Reestablished by Billy D. Buckler RLS midway and on line between Section corners. Set 1" pipe with 4" brass cap. 9" J.Pine N37°W 39 links, 6" J.Pine S61°E 18 links.

B. Description of corner evidence found and/or method applied in restoring or reestablishing corner:

Found the 1961 monument in good condition and at substantial record bearing and distance from the 1961 accessories. The J.Pine NW is now 11" DBH with open blazes and was found at mag. Bearing of N20°W. The J.Pine SE is standing dead at record bearing and distance. Accepted the monument as a careful and faithful reestablishment of the position of the original corner.

C. Description of monument for corner and accessories established to perpetuate locating the position of the corner:

Found 1" ID I.pipe with 4" brass MI Dept. of Conservation cap. Set measuring nail with MDNR tag in the side of:
11" J.Pine N20°W 26.3' open blazes (1961 NBT)
5" J.Pine N85°E 16.45' mrkd "1/4S NBT"
6" J.Pine S01°E 11.6' do
6" J.Pine S39°E 3.0' do
E= 8070008.064 N= 147572.146



Bearings are magnetic. Coordinates are MCS83 in meters (NAD83(2011) Datum).
Coord. Ref.=NGS PID DL6163: N= 131822.939 m. E= 8059239.498 m.

Signed by Stephan J. Szyszkoski Date 06/12/2013
Surveyor's Michigan License No. 33986

For the Michigan Department of Natural Resources, Forest Resources Division