

LAND CORNER RECORDATION CERTIFICATE

Filing Requirement of Act 74, Mich. P.A. 1970

SURVEY &
REMONUMENTATION

JAN 16 2001

SECTION

Register of Deeds Stamp
& File Number

For corners in

Shiawassee
(County)

Located in:

Corner Code #

1. Public Land Survey

T 7N R 3E

K-4

2. Property Controlling
In Section

S T R

3. Miscellaneous
Property in Sec.

S T R

4. Lot No.

Recorded Plat

5. Private Claims

I, Mark L. VanRaemdonck, in a field survey on, January 5, 2000, do hereby certify that under requirements of P.A. 74, Michigan P.A. of 1970, the corner points mentioned in lines 1 and 2 above were in conformance with regulations and rules therefore as required in the current manual of survey instructions of the United States Department of the Interior, Bureau of Land Management or by a decree of a Court of Law and/or that the corner points mentioned in lines 3, 4 and 5 above were in conformance with the rules of the Michigan Board of Land Surveyors or by a Decree of a Court of Law; established, re-established, monumented, re-monumented, recovered, found as expressed below:

NOTE: Not more than 2 corners, all in the same town and range, may be recorded on this certificate.

A. Description of original monument and accessories and/or subsequent restoration:

1.) Original, Joseph Wampler, D.S., April 1822.

Monument: Wood stake

Accessories: Maple 10 N9½E 50
Elm 8 S10W 9

2.) Monroe Holley, County Surveyor, County Surveyor's Book A, page 131, Dec. 17, 1857.

Monument: Not given

Accessories: Elm 20 N10¼W 137 ¾
W. Oak 20 S85½E 114 ½

Statement that corner is equidist from Northeast corner to Southeast corner, Section 11, T7N-R3E

3.) Lyman Mason, County Surveyor, County Surveyor's Book C, page 210, March 25, 26, and 27, 1879.

Monument: Not given

Accessories: Elm 20 N75-55E 61
S. Oak 9 S29-55E 43 ½

4.) H. C. Main, County Surveyor, County Surveyor's Book E, page 156, November 29 and 30, 1886.

Monument: Stake and stone "Holley's corner"

Accessories: W. Oak 20 S85½E 114 ½
North 39.92 CHS (2634.72) to K-3
South 39.92 CH (2634.72) to K-5

5.) H. C. Main, County Surveyor, County Surveyor's Book E, page 195, April 15 and 16, 1890.

Monument: Not given

Accessories: Poplar 5 S251/4W 93
South 39.92 CH (2634.72) to K-5

6.) Jan S. Fokens, Certified Survey, recorded Liber 2, page 357, August 24, 1976.

Monument: Not given

Accessories: N01°07'25"W 2637.93' to corner K-3
S01°09'45"E 2642.82' to corner K-5

Continued on reverse.

B. Description of corner evidence found and/or method applied in restoring or re-establishing corner:

Searched apparent corner location. Found a ½" diameter rerod with cap in a ½" pipe, as referenced in No. 6 through No. 10 above. Found no conflicting evidence and accepted this location as the original corner position based on the best available evidence. Excavation for Harrison marker provided no further evidence.

C. Description of monument for corner and accessories to perpetuate locating the position of the corner:

Replaced the rerod and pipe with a standard Shiawassee County Harrison marker monument. The marker is stamped "Remon P.S. 24622" and is witnessed by the following accessories:

S75°E 47.45' N&T #24622 N. face 8" Birch
S30°E 70.20' N&T #24622 NE face 6" Pine
N35°W 32.09' Top cen. S. end 12" conc. culv.
N20°W 53.65' Top cen. N. end 12" conc. culv.

Signed by

Mark L. VanRaemdonck

Date 10-17-00

Surveyor's Michigan License No. 24622

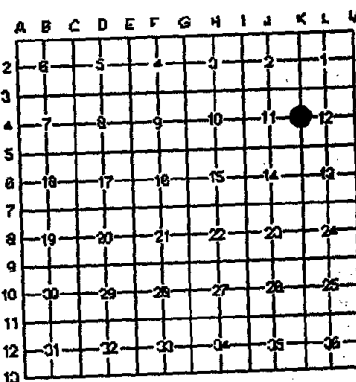


Kaye Grubbs - Shiawassee Co.

REMON

3043874

Page: 1 of 2
11/17/2000 09:33A
L-1 P-327



APPROVED

County Remonumentation
Peer Review Group

NCC 13 NOV 00



FORM APPROVED BY MICHIGAN STATE BOARD OF LAND SURVEYORS JAN 18, 1971
REVISED MAY 14, 1978
REVISED JAN, 1993

A. Description of original monument and accessories and/or subsequent restoration:

7.) Mark L. VanRaemdonck, Certified Survey, recorded Liber 4, page 30, April 4, 1983.

Monument: Found rerod and cap #11192

Accessories: East 33.00' Rerod & Cap #24622
N60°W 32.07' S. end 12" conc. culv.
N50°W 53.63' N. end 12" conc. culv.
S20°E 115.30' 12" Apple tree

8.) Mark L. VanRaemdonck, L.C.R.C., recorded Liber 2, June 10, 1983.

Monument and accessories are the same as No. 7 above.

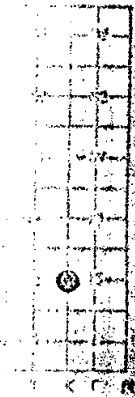
9.) John H. Rauser, Certified Survey, recorded Liber 8, page 450, April 20, 1999.

Monument: Found ½" rerod, 0.2 feet below asphalt in centerline Kerby Road.

Accessories: N20°W 53.61' N. end 12" conc. culv.
N40°W 32.03' S. end 12" conc. culv.
S40°E 25.76' Set ½" rod with cap #39096
N45°E 26.10' Set ½" rod with cap #39096

10.) John H. Rauser, Certified Survey, recorded Liber 8, page 498, July 1, 1999.

Monument and accessories are the same as No. 9 above. Also, show S01°55'29"E 2642.40 feet to K-5.



3043874
Page: 2 of 2
11/17/2000 09:33A
[-] P-327

Kaye Grubba - Shiawassee Co. REMON