

1996 REMONUMENTATION PROGRAM  
LAND CORNER RECORDATION CERTIFICATE  
Filing Requirement of Act 74, Mich. P.A. 1970

For corners in Koylton Township

Tuscola

(County)

Located in:

Corner Code #

1. Public Land Survey

T11N R11E A-3  
T11N R10E M-3

T R

T R

2. Property Controlling  
in Section

S 6 T11N R11E #0002

S 7 T11N R11E #0001

3. Miscellaneous  
Property in Sec.

S T11N R10E #0002

S T11N R10E #0001

4. Lot No. , Recorded Plat

5. Private Claims

I, Kenneth D. Dunton in a field survey on Apr. 28, 1996 do hereby state that under requirements of P.A. 74, Michigan P.A. of 1970, the corner points mentioned in lines 1 and 2 above were in conformance with regulations and rules therefore as required in the current manual of survey instructions of the United States Department of the Interior, Bureau of Land Management or by a decree of a Court of Law and/or that the corner points mentioned in lines 3, 4 and 5 above were in conformance with the rules of the Michigan Board of Land Surveyors or by a Decree of a Court of Law; established, re-established, monumented, recovered, found as expressed below:

NOTE: Not more than 2 corners, all in the same town and range, may be recorded on this certificate.

A. Description of original monument and accessories and/or subsequent restoration:

GLO 1834

Harvey Parke, D.S.

Set Post Cor. Secs.

1 & 12

Tamarack 5 N 36 W 35

Tamarack 5 S 31 1/2 W 36

Corner M-3, T11N-R10E

Nov. 3, 1882

John A. Teskey, Co. Surveyor

Sec. 1, T11N-R10E, Pages 28 & 29

Tamarack 5 N36W35

Tamarack 5 S 76 1/2 E 67 1/4

Tamarack 5 S 31 1/2 W 36

April 14, 1886

John A. Teskey, Co.

Surveyor, Sec. 6, T11N-R11E, Pages 46 & 47

See S.E. cor. Sec. 1

of Dayton Twp., Page

28

Note: Section A continued on back of form.

B. Description of corner evidence found and/or method applied in restoring or reestablishing corner:

Investigated the area from a boat as the water in the location of Corner M-3 on April 27 & 28, 1996 was 8'± in depth. Surveyed & proportioned to adjacent Corners per G.L.O. & county surveyors re-survey records. Accepted proportionate location as the best position of the original corner.

Note: No corner set at M-3, T11N-R10E. See sketch on back of form for location of witness monuments 0001 & 0002. See section below for accessories to witness monuments 0001 & 0002.

Note: Corner A-3, T11N-R11E & 0001 & 0002 are common with corner M-3, T11N-R10E & 0001 & 0002.

C. Description of monument for corner and accessories established to perpetuate locating the position of the corner:

Set standard monuments stamped wit. mon. #0001, T11N-R10E and wit. mon. #0002, T11N-R10E.

Accessories to Wit. Mon. #0001

N48°E 57.63' set T.C. tag & spike in SE face 12" Maple.

N85°07'E 29.69' fnd. 1/2" rod per Gravlin survey.

S85°E 21.3'± center 42" stump.

N85°W 32.45' set T.C. tag & spike in S. face 10" Oak.

Signed by

Surveyor's Michigan License No. 23503

Accessories to Wit. Mon. #0002

N35°E 64.40' SW corner wd. fr. shed.

East 66.00' SW corner house.

S30°E 7.70' fnd. 1/2" rod (bent).

S03°E 81.39' set 1/2" x 18" rod.

S30°W 41.37' set T.C. tag & spike in

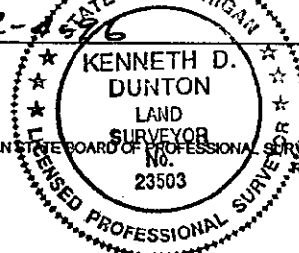
SE face 8" gate post.

Date

12-4-96

APPROVED

12-4-96



Note: Accessories continued on back of form.

FORM APPROVED BY MICHIGAN STATE BOARD OF PROFESSIONAL SURVEYORS, JAN. 28, 1971  
REVISED MAY 14, 1975  
REVISED JAN. 1983  
REVISED OCT., 1993

Date of Survey unknown  
 Edward Teskey, County Surveyor 1895-1898  
 Section 7, T11N-R11E  
 Cedar stake previously set.

Aug. 23, 1974

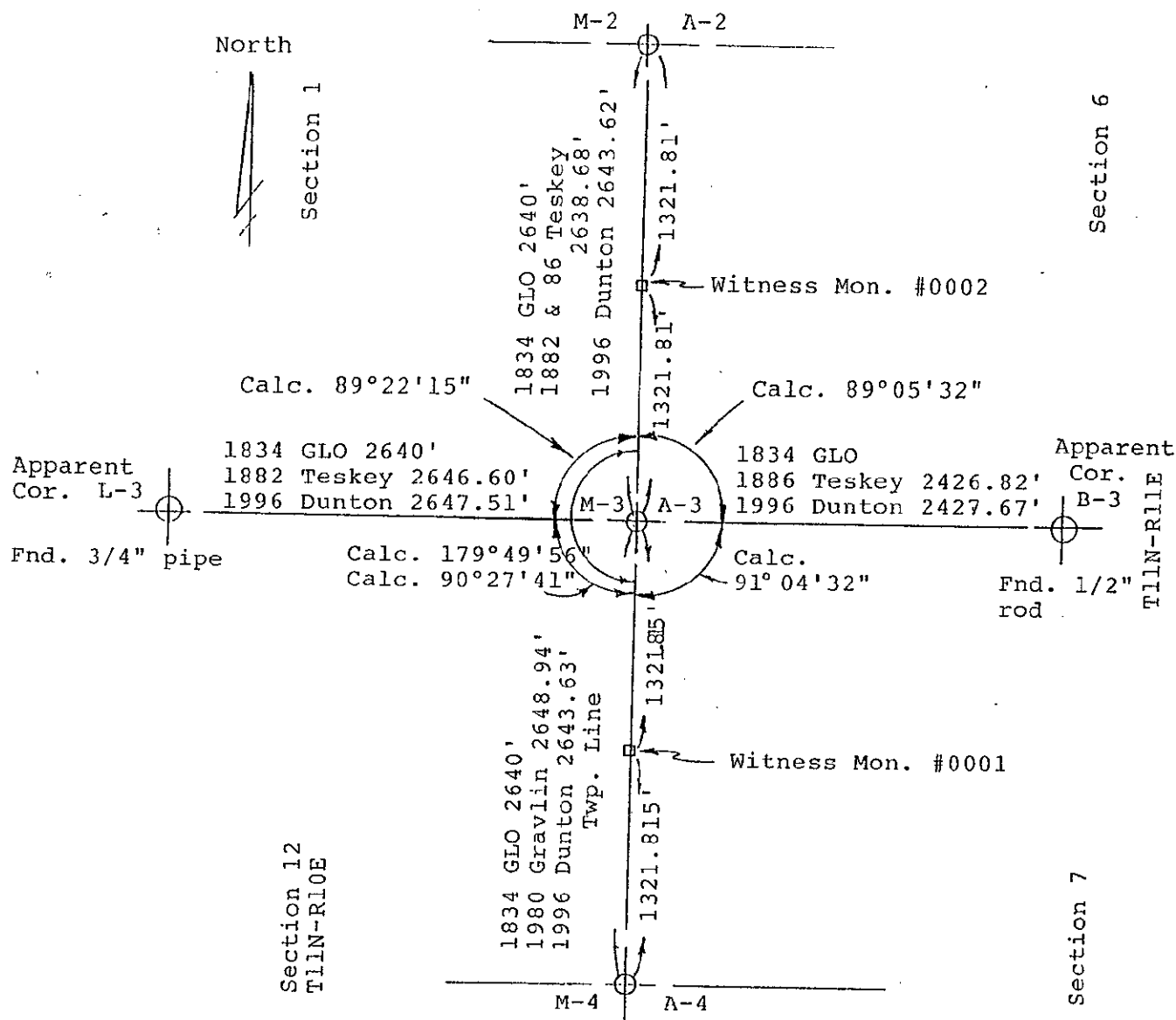
Survey by David T. Rowe, Land Surveyor #11192, Liber 443-Page 850  
 No mention of object fnd. or set or accessories.  
 (inaccessible in swamp)

Aug. 18, 1980

Survey by Earl E. Gravlin, Land Surveyor #23510, Liber 508-Pages 1092 & 1093.  
 No mention of object found or set or accessories.  
 Note: Survey indicates cor. in water.

July 22, 1993

Unrecorded survey by Earl E. Gravlin, Land Surveyor #23510, Job No. 93641.  
 No mention of object found or set or accessories.



#### Section C continued

##### Witn. Mon. #0001

S83°E 71.73' set T.C. tag & spike in  
 N. face 15" Maple.  
 N52°20'W 4.25' fnd. 1/2" rod per  
 Gravlin survey.  
 West 10' set carsonite post  
 S08°W 28.50' set 1/2" x 18" rod.

##### Wit. Mon. #0002

S70°W 21.80' set T.C. tag & spike in  
 SE face 10" wood cor. post.