

SURVEY & REMONUMENTATION

MAR 02 1999

1998 REMONUMENTATION PROGRAM
LAND CORNER RECORDATION CERTIFICATE
Filing Requirement of Act 74, Mich. P.A. 1970

RECEIVED FOR RECORD
LIBER NO. _____ PAGE NO. #53
FILE NO. NOVESTA TWP

98 NOV 30 PM 1:35

SECTION

For corners in NOVESTA TOWNSHIP

TUSCOLA

(County)

Located In:

Corner Code #

1. Public Land Survey

T 13N R 11E

A-6

2. Property Controlling in Section

S _____

T _____

3. Miscellaneous

S _____

T _____

Property in Sec.

S _____

T _____

4. Lot No. _____, Recorded Plat _____

5. Private Claims _____

I, LIONEL ROY EMERY, in a field survey on JULY 7, 1998 do hereby state that under requirements of P.A. 74, Michigan P.A. of 1970, the corner points mentioned in lines 1 and 2 above were in conformance with regulations and rules therefore as required in the current manual of survey instructions of the United States Department of the Interior, Bureau of Land Management or by a decree of a Court of Law and/or that the corner points mentioned in lines 3, 4 and 5 above were in conformance with the rules of the Michigan Board of Land Surveyors or by a Decree of a Court of Law; established, re-established, monumented, recovered, found as expressed below:

NOTE: Not more than 2 corners, all in the same town and range, may be recorded on this certificate.

A. Description of original monument and accessories and/or subsequent restoration:

1834 GLO NOTES PG. 466: HERVEY PARKE, DEP. SUR. SET QR. SEC. POST; HEMLOCK 9 S24W 28; CEDAR 20 N11 1/2W 31
1973 SURVEY OF DODGE ROAD (PLAN ON FILE AT TUSCOLA COUNTY ROAD COMM. OFFICES) BY: SCOTT ENGINEERING, ALPENA, MI; SET 1/2" BAR & RLS CAP; S45°W 69.08' POWER POLE; EAST 40.40' 2ND. FE POST
1978 RECORD SURVEY (L. 489, PAGE 982) BY: STEWART G. CASE P.S. 15399; FOUND 1/2" IRON PIN; SPIKE ON SE SIDE P.P., S55°W-69.17'; SPIKE ON SW SIDE 15" MAPLE T., N20°W-53.8'; N. LEG OF DIRECTIONAL SIGN, EAST -19.85'

B. Description of corner evidence found and/or method applied in restoring or reestablishing corner:

FOUND 1/2 IN. DIA. RE-ROD TOGETHER WITH ACCESSORIES FROM 1973 & 1978 SURVEYS. ALSO MEASURED DEFLECTION ANGLE AND LINEAR MEASUREMENTS TO SECTION CORNERS NORTH AND SOUTH CONFIRM FOUND MARKER TO BE IN SAME POSITION AS 1973 SURVEY OF DODGE ROAD.

ACCEPTED POSITION OF FOUND IRON TO BE A CAREFUL AND FAITHFUL PERPETUATION OF ORIGINAL GOVERNMENT CORNER.

C. Description of monument for corner and accessories established to perpetuate locating the position of the corner:

REMOVED FOUND IRON AND REPLACED WITH STANDARD TUSCOLA COUNTY CONCRETE MONUMENT WITH 2 IN. DIA. BRASS CAP STAMPED M6 T13N R10E.

S86°E, 40.90 FT. SET T.C. RE-MON. TAG OVER FOUND NAIL IN SOUTH FACE OF WOOD FENCE POST.

S20°E, 51.37 FT. SET 1/2 IN. DIA. RE-ROD IN GRASS SHOULDER.

S45°W, 89.37 FT. SET T.C. RE-MON TAG OVER FOUND NAIL IN SOUTHEAST FACE OF POWER POLE.

N25°W, 53.61 FT. SET T.C. RE-MON. TAG IN SOUTHWEST FACE OF 20 IN. MAPLE.

NOTE: THIS CORNER IS COMMON WITH CORNER M 6 T13N R10E (ELLINGTON TOWNSHIP)

Signed by

Lionel Roy Emery

Date NOVEMBER 30, 1998

Surveyor's Michigan License No. 24593

APPROVED

11-9-98

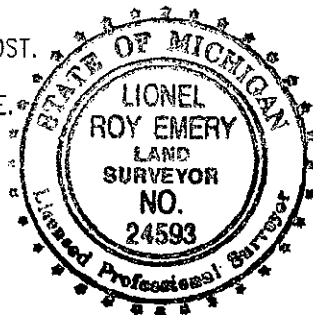
1100
8m7.
RedB

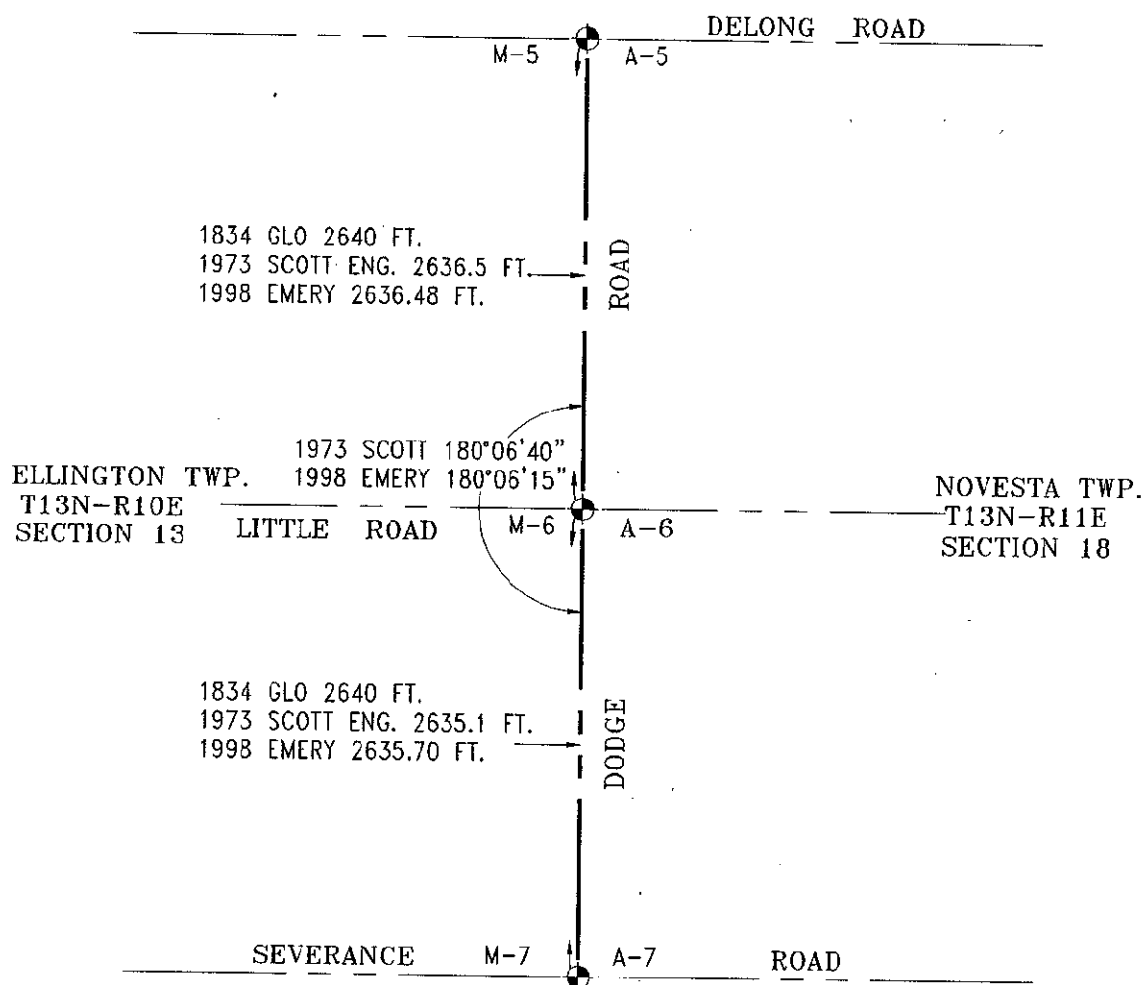
FORM APPROVED BY MICHIGAN STATE BOARD OF PROFESSIONAL SURVEYORS, JAN. 28, 1971
REVISED MAY 14, 1975
REVISED JAN., 1983
REVISED OCT., 1985

James M. Brown
TUSCOLA COUNTY
REGISTER OF DEEDS

Register of Deeds Stamp & File Number

	A	B	C	D	E	F	G	H	I	J	K	L	M
1													
2	6			5		4		3		2		1	
3													
4	7			8		9		10		11		12	
5													
6	18			17		16		15		14		13	
7													
8	19			20		21		22		23		24	
9													
10	30			29		28		27		26		25	
11													
12	31			32		33		34		35		36	
13													





SURVEY &
REMONUMENTATION

MAR 02 1999

SECTION