

MAR 02 1999

## SECTION

## 1998 REMONUMENTATION PROGRAM

LAND CORNER RECORDATION CERTIFICATE  
Filing Requirement of Act 74, Mich. P.A. 1970

For corners in NOVESTA TOWNSHIP

TUSCOLA

(County)

Located in:

Corner Code #

## 1. Public Land Survey

T 13N R 11E

A-12

2. Property Controlling  
in Section

S

S

## 3. Miscellaneous

S

Property in Sec.

S

## 4. Lot No. \_\_\_\_\_, Recorded Plat \_\_\_\_\_

## 5. Private Claims \_\_\_\_\_

I, LIONEL ROY EMERY, in a field survey on JULY 5, 1998 do hereby state that under requirements of P.A. 74, Michigan P.A. of 1970, the corner points mentioned in lines 1 and 2 above were in conformance with regulations and rules therefore as required in the current manual of survey instructions of the United States Department of the Interior, Bureau of Land Management or by a decree of a Court of Law and/or that the corner points mentioned in lines 3, 4 and 5 above were in conformance with the rules of the Michigan Board of Land Surveyors or by a Decree of a Court of Law, established, re-established, monumented, recovered, found as expressed below:

NOTE: Not more than 2 corners, all in the same town and range, may be recorded on this certificate.

## A. Description of original monument and accessories and/or subsequent restoration:

1834 GLO NOTES PG. 268; HERVEY PARKE, DEP. SUR. SET QR. SEC. POST; CEDAR 8 N5 1/2W 7, CEDAR 14 S52W 7 1/2  
1974 RECORDED SURVEY (L. 445, PG. 732) BY: ROBERT G. KAY P.S. 14096 5/8" IRON IN WOOD STAKE; WEST 23.77' TAB  
IN FENCE POST; S70°W 30.80 FT. TAB IN 4" POPLAR; S40°W 49.20' TAB IN 6" POPLAR  
1975 RECORDED SURVEY (L. 450, PG. 473) BY: ROBERT G. KAY P.S. 14096 3/8" ROD; WEST 23.78' FENCE POST; S30°W  
49.27' FLAGGED NAIL IN 5" POPPLE; S70°W 30.81' FLAGGED NAIL IN 3" POPPLE

## B. Description of corner evidence found and/or method applied in restoring or reestablishing corner:

RECOVERED CORNER POSITION FROM DATA GIVEN ON KAY'S 1974 SURVEY, FOUND NOTHING AT CORNER--RECOVERED 2  
ACCESSORIES AS SHOWN ON SURVEYS BY KAY.

ACCEPTED RECOVERED CORNER POSITION AS A CAREFUL AND FAITHFUL PERPETUATION OF ORIGINAL GOVERNMENT CORNER.

## C. Description of monument for corner and accessories established to perpetuate locating the position of the corner:

SET STANDARD TUSCOLA COUNTY CONCRETE MONUMENT WITH 2 IN. DIA. BRASS CAP STAMPED M12 T13N R10E

S82°E. 39.52 FT. SET T.C. RE-MON TAG OVER FOUND NAIL IN SOUTH FACE OF 5 IN. POPLAR  
S50°E. 34.38 FT. SET T.C. RE-MON TAG IN SW FACE OF 6 IN. POPLAR  
S30°W. 49.65 FT. SET T.C. RE-MON TAG OVER FOUND NAIL IN NW FACE OF 9 IN. POPLAR  
S60°W. 30.95 FT. SET T.C. RE-MON TAG OVER FOUND NAIL IN SE FACE OF 10 IN. POPLAR

NOTE: THIS CORNER IS COMMON WITH CORNER M 12 T13N R10E (ELLINGTON TOWNSHIP)

Signed by

*Lionel Roy Emery*

Surveyor's Michigan License No. 24593

Date NOVEMBER 30, 1998

APPROVED

11-9-98

*JMD*  
*RAB*

FORM APPROVED BY MICHIGAN STATE BOARD OF PROFESSIONAL SURVEYORS, JAN. 28, 1971  
REVISED MAY 14, 1975  
REVISED JAN., 1983  
REVISED OCT., 1995

RECEIVED FOR RECORD

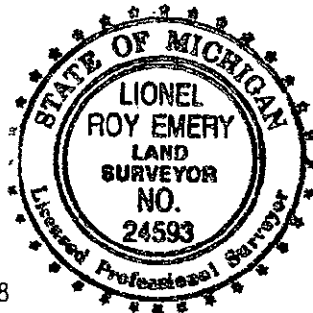
LIBER NO. \_\_\_\_\_ PAGE NO. 447FILE NO. NOVESTA TWP

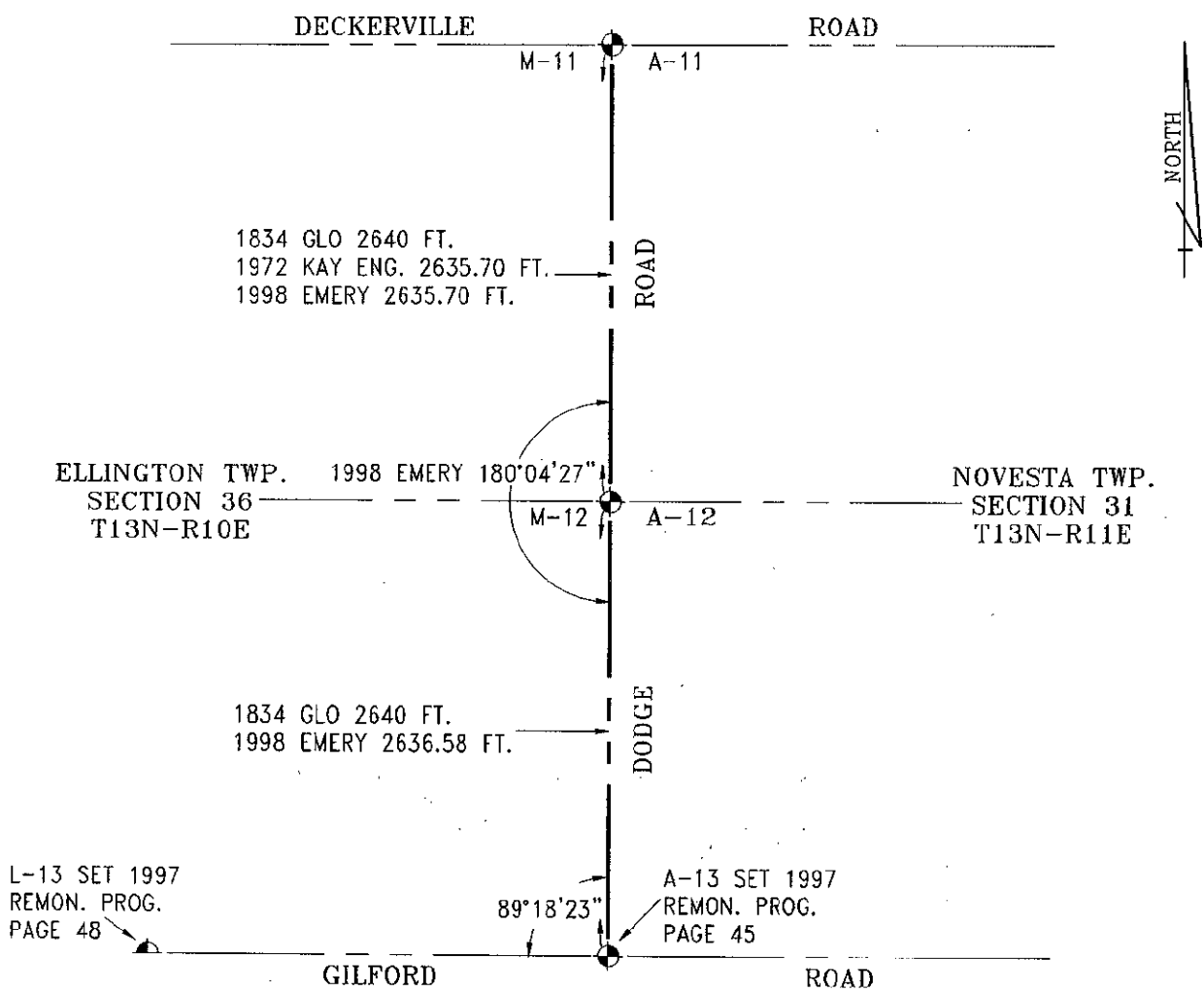
98 NOV 30 PM 1:34

*Gary M. Emery*TUSCOLA COUNTY  
REGISTER OF DEEDS

Register of Deeds Stamp &amp; File Number

	A	B	C	D	E	F	G	H	I	J	K	L	M
1													
2	6			5			4			3		2	1
3													
4	7			8			9			10		11	12
5													
6	18			17			16			15		14	13
7													
8	19			20			21			22		23	24
9													
10	30			29			28			27		26	25
11													
12	31			32			33			34		35	36
13													





SURVEY &  
REMONUMENTATION

MAR 02 1999

SECTION