

# SURVEY & REMONUMENTATION

MAR 02 1999

## 1998 REMONUMENTATION PROGRAM LAND CORNER RECORDATION CERTIFICATE Filing Requirement of Act 74, Mich. P.A. 1970

### SECTION

For corners in Novesta Township

TUSCOLA COUNTY  
REGISTER OF DEEDS

RECEIVED FOR RECORD  
LIBER NO. \_\_\_\_\_ PAGE NO. \_\_\_\_\_  
FILE NO. #67-748  
NOV 27 1998  
98 DEC 10 PM 4:12

Register of Deeds Stamp & File Number

Tuscola	Located In:	Corner Code #
(County)		
1. Public Land Survey	T-13N R-11E	K-13
	T- R-	
	T- R-	
	T- R-	
	T- R-	
2. Property Controlling in Section	S- T- R-	
	S- T- R-	
3. Miscellaneous Property in Sec.	S- T- R-	
	S- T- R-	

4. Lot No. \_\_\_\_\_, Recorded Plat \_\_\_\_\_  
5. Private Claims \_\_\_\_\_

I, Kenneth D. Dunton, in a field survey on Aug. 16, 1998 do hereby state that under requirements of P.A. 74, Michigan P.A. of 1970, the corner points mentioned in lines 1 and 2 above were in conformance with regulations and rules therefore as required in the current manual of survey instructions of the United States Department of the Interior, Bureau of Land Management or by a decree of a Court of Law and/or that the corner points mentioned in lines 3, 4 and 5 above were in conformance with the rules of the Michigan Board of Land Surveyors or by a Decree of a Court of Law, established, re-established, monumented, recovered, found as expressed below:

NOTE: Not more than 2 corners, all in the same town and range, may be recorded on this certificate.

	A	B	C	D	E	F	G	H	I	J	K	L	M
1													
2	6		5		4		3		2		1		
3													
4	7		8		9		10		11		12		
5													
6	18		17		16		15		14		13		
7													
8	19		20		21		22		23		24		
9													
10	30		29		28		27		26		25		
11													
12	31		32		33		34		35		36		
13													

#### A. Description of original monument and accessories and/or subsequent restoration:

G.L.O. Notes Nov. 20, 1834 by H. Parke, D.S., set post corner Sections 35 & 36, Hemlock 11" N59°E 16 links, Hemlock 11" N56°W 37 links. G.L.O. notes Nov. 26, 1834 by H. Parke, D.S., North between Secs. 1 & 2, T12N-R11E and at 80.78 chains intersected N. boundary at post, Cedar 20" S25°W 18 links, Cedar 12" S54°E 23 links. T.C.R.C. witness card, date unknown, by W. E. Leonard, Surveyor, Ford axle with stones, no accessories given.

#### B. Description of corner evidence found and/or method applied in restoring or reestablishing corner:

Dug 30" x 48" x 36" deep hole and found rock pile and pieces of wood, no evidence of Ford axle. 1890 drain notes of Vorhes Drain, by J. A. Teskey, Surveyor, indicate that each 1/4 mile along the South line of Sec. 35, T13N-R11E, measures 19.93 chains (1315.38), the distance as now measured between Corner 1-13 and J-13 = 2634.33, the distance as now measured between J-13 and the rock pile = 2636.17' with a 00°00'10" deflection at Corner J-13. With the above information I accepted the center of the rock pile as the best evidence of the original corner.

Corner K-13, T13N-R11E is common with corner K-1, T12N-R11E.

#### C. Description of monument for corner and accessories established to perpetuate locating the position of the corner:

Removed rock pile & perpetuated with standard monument stamped K-13, T13N-R11E. Placed rocks & asphalt around base of monument & placed mon. box over monument.  
N55°W 65.86' set T.C. Remon. tag & spike in S. face 4" x 4" wood post.  
N45°E 50.84' set T.C. Remon. tag & spike in SE face 12" wood cor. post.  
N55°E 62.07' set T.C. Remon. tag & spike in SE face utility pole.  
S55°E 52.09' set T.C. Remon. tag & spike in W. corner RR tie cor. post.  
S15°W 45.25' set 1/2" x 18" iron rod in road shoulder.

Signed by

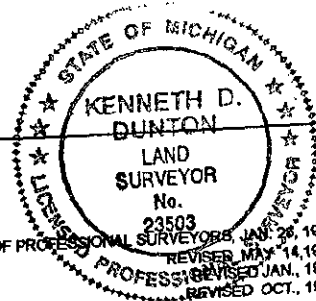
Surveyor's Michigan License No.

23503

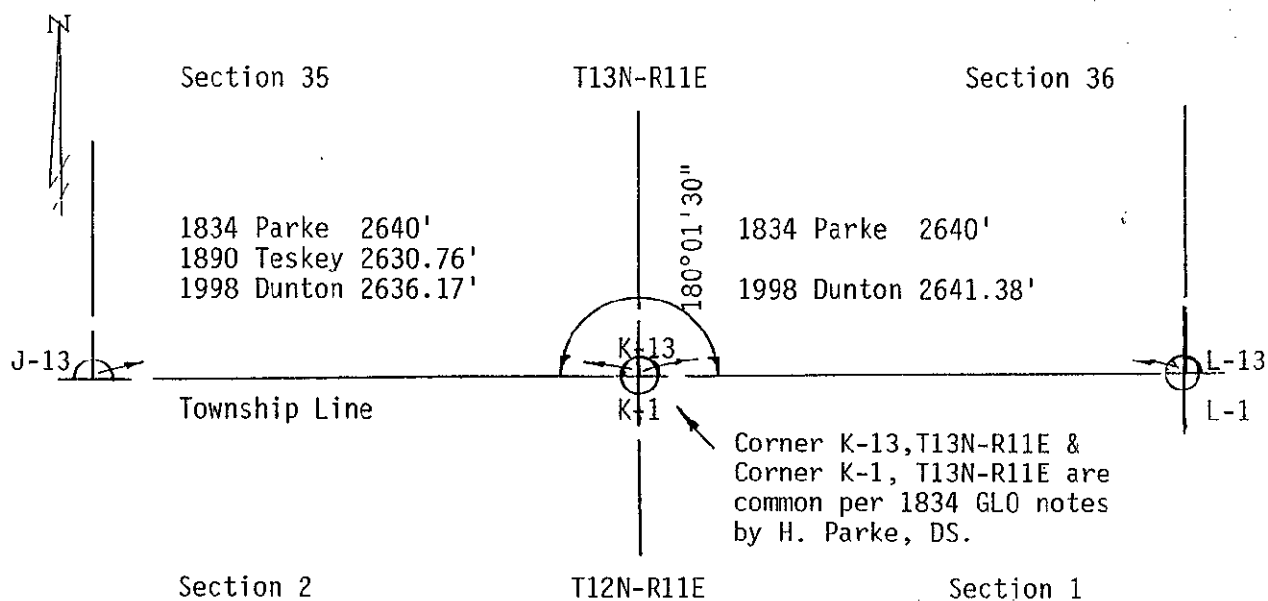
Date

12-2-98

APPROVED  
12-2-98



FORM APPROVED BY MICHIGAN STATE BOARD OF PROFESSIONAL SURVEYORS, JAN. 28, 1971  
REVISED MAY 14, 1975  
REVISED JAN. 1983  
REVISED OCT., 1995



SURVEY &  
REMONUMENTATION

MAR 02 1999

SECTION