

COPY

1999 REMONUMENTATION PROGRAM
LAND CORNER RECORDATION CERTIFICATE
Filing Requirement of Act 74, Mich. P.A. 1970

RECEIVED FOR RECORD
LIBER NO. PAGE NO. #67
FILE NO. Elkland Twp.

99 DEC 20 AM 8:25

Gregory M. Lohela

TUSCOLA COUNTY
REGISTER OF DEEDS

For corners in Elkland Twp.

Tuscola Located In: Corner Code #
(County)

1. Public Land Survey T 14N R 11E B-13
T R
T R
T R
T R

2. Property Controlling S T R
in Section S T R
3. Miscellaneous S T R
Property in Sec. S T R

Register of Deeds Stamp & File Number

4. Lot No. Recorded Plat
5. Private Claims

I, Lionel Roy Emery, in a field survey on July 5, 1999 do hereby state that under requirements of P.A. 74, Michigan P.A. of 1970, the corner points mentioned in lines 1 and 2 above were in conformance with regulations and rules therefore as required in the current manual of survey instructions of the United States Department of the Interior, Bureau of Land Management or by a decree of a Court of Law and for that the corner points mentioned in lines 3, 4 and 5 above were in conformance with the rules of the Michigan Board of Land Surveyors or by a Decree of a Court of Law; established, re-established, monumented, recovered, found as expressed below:

NOTE: Not more than 2 corners, all in the same town and range, may be recorded on this certificate.

	A	B	C	D	E	F	G	H	I	J	K	L	M
1													
2	6	5						3		2			
3													
4	7	8						10		11			
5													
6	18	17	16					15		14			13
7													
8	19	20	21					22		23			24
9													
10	30	29	28					27		26			25
11													
12	31	32	33					34		35			36
13													

A. Description of original monument and accessories and/or subsequent restoration:

- 1835 GLO; PARKE, D.S.; SET POST; FIR 9 N52W 11, CEDAR 12 N84E 36.
1979 QUIST, PS#25868; LCRC P. 20; FOUND REMAINS OF WOOD STAKE 3' BELOW SURFACE AT PRORATED SPLIT DISTANCE; SET 5/8" REROD #11192; N30W 38.67° E. END CULVERT, N35E 35.50° W. END CULVERT, SOUTH 50.8' TAG #11192 IN 26" COTTONWOOD.
1979 ROWE ENGINEERING; QUIST, PS#25868; SURVEY L. 498 P. 1165; ACCESSORIES SAME AS IN 1979 LCRC CITED ABOVE.

B. Description of corner evidence found and/or method applied in restoring or reestablishing corner:

- 1999 EMERY, PS#24593; FOUND 1/2" IRON; FOUND NO PREVIOUS MONUMENTS OR ACCESSORIES; DISTANCES TO CORNERS B-13 AND D-13 INDICATE THAT FOUND SHAFT IS IN GOOD AGREEMENT WITH PROPORTIONATE SPLIT.
ACCEPTED FOUND 1/2" REROD AS BEST AVAILABLE EVIDENCE OF ORIGINAL CORNER POSITION.

C. Description of monument for corner and accessories established to perpetuate locating the position of the corner:

- B-13
SET STD. REMON. MONUMENT STAMPED B 13, T14N R11E.
N55°E, 80.04', TOP CENTER OF GAS PIPELINE MARKER
S05°E, 19.85', FACE OF STEEL PIPE ROAD SIGN POST
S60°W, 19.79' SET 1/2" REROD IN ROAD SHOULDER
N45°W, 64.64', SET REMON. TAG IN NE FACE OF 12" COTTONWOOD



DUE TO THE UNTIMELY ILLNESS OF MR. LIONEL ROY EMERY, I, KARI M. LOHELA, HAVE REVIEWED HIS FIELD NOTES AND PREPARED THIS FORM FOR PEER GROUP REVIEW

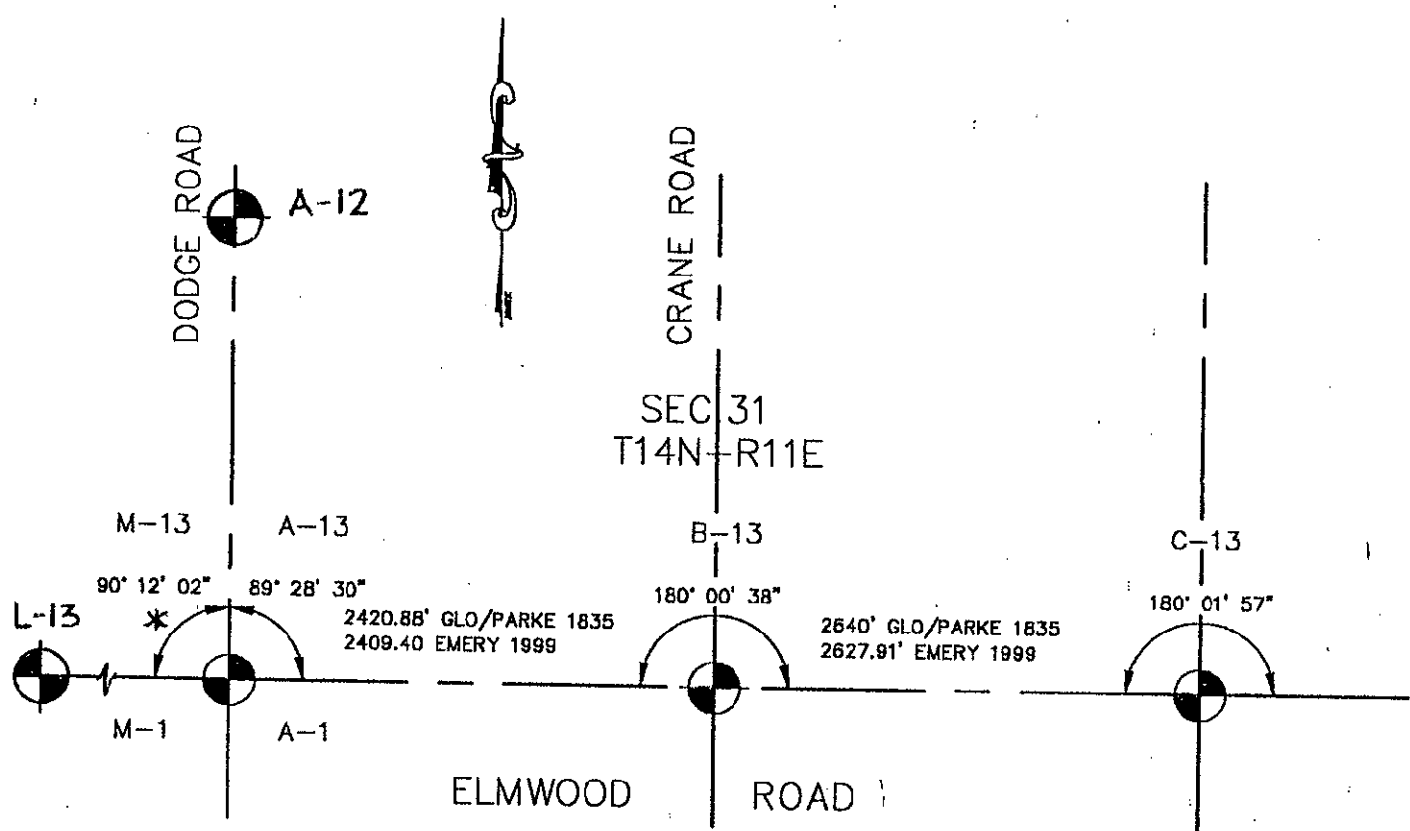
Signed by Kari M. Lohela
Surveyor's Michigan License No. 44289

Date 12/13/99

APPROVED
12-13-99

FORM APPROVED BY MICHIGAN STATE BOARD OF PROFESSIONAL SURVEYORS, JAN. 28, 1971
REVISED MAY 14, 1975
REVISED JAN., 1983
REVISED OCT., 1995

Y900



* $90^{\circ} 12' 18''$ FIELD 1998

SEC.6
T13N-R11E