

\$ 7.00 DEED
 30 DEC 96 1:48 P.M. RECEIPT# 498
 RECORDED
 FOREST E. YOUNGBLOOD, REGISTER OF DEEDS
 WAYNE COUNTY, MI

LAND CORNER RECORDATION CERTIFICATE
 Filing Requirement of Act 74, Mich. P.A. 1970

For corners in

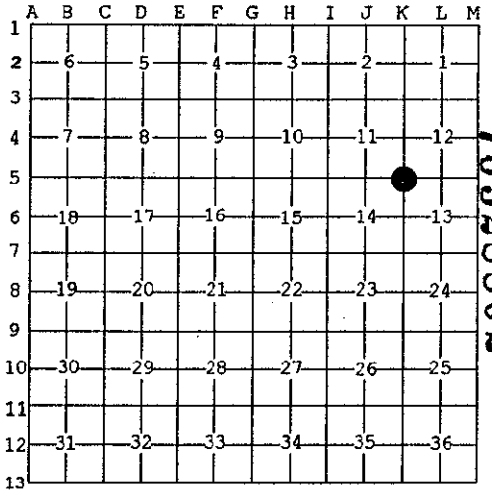
<u>Wayne, Redford Twp.</u> (County)	Located In:	Corner Code #
	City of Detroit	
1. Public Land Survey	T <u>1S.</u> R <u>10E</u>	<u>K-5</u>
	T <u> </u> R <u> </u>	<u> </u>
	T <u> </u> R <u> </u>	<u> </u>
	T <u> </u> R <u> </u>	<u> </u>
2. Property Controlling in Section	S <u> </u> T <u> </u> R <u> </u>	<u> </u>
	S <u> </u> T <u> </u> R <u> </u>	<u> </u>
3. Miscellaneous Property in Sec.	S <u> </u> T <u> </u> R <u> </u>	<u> </u>
	S <u> </u> T <u> </u> R <u> </u>	<u> </u>

\$ 4.00 REMONUMENTATION
LI29367PA023

Compliance with
 ACT 345, P.A. 1990
 APPROVED ON: 12-18-96
 WAYNE COUNTY REMONUMENTATION
 PEER GROUP COMMITTEE
 Register of Deeds Stamp & File Number

4. Lot No. _____, Recorded Plat _____
 5. Private Claims _____

I, William L. Roskelly, in a field survey on Dec 13, 19 96 do hereby state that under requirements of P.A. 74, Michigan P.A. of 1970, the corner points mentioned in lines 1 and 2 above were in conformance with regulations and rules therefore as required in the current manual of survey instructions of the United States Department of the Interior, Bureau of Land Management or by a decree of a Court of Law and/or that the corner points mentioned in lines 3, 4 and 5 above were in conformance with the rules of the Michigan Board of Land Surveyors or by a Decree of a Court of Law; established, re-established, monumented, recovered, found as expressed below:



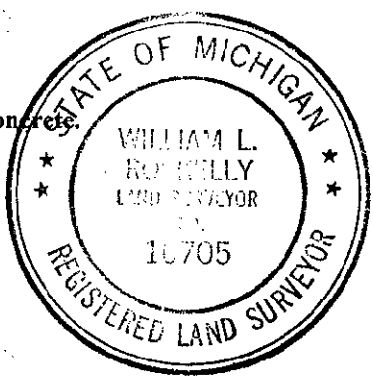
NOTE: Not more than 2 corners, all in the same town and range, may be recorded on this certificate.

A. Description of original monument and accessories and/or subsequent restoration:

K-5) Southeast corner section 11, T.1 S., R.10 E., Redford Township
 G.L.O. (1830's) Joseph Fletcher set corner post, witnesses: Sug 10S23 W16 (gone), B. Ash 10S52 E27 (gone).
 W.P.A. (1930's) no witnesses.
 No RC's or CS's found on file at Wayne County:

B. Description of corner evidence found and/or method applied in restoring or reestablishing corner:

K-5) Southeast corner section 11, T.1 S., R.10 E., Redford Township
 Found a bronze disk with punch mark in a monument box at Southfield and Six Mile road, concrete.
 Verified corner location by comparing City of Detroit Data with field measurements:
 K-5 to K-4 Record = 2635.39' Measured = 2636.93'
 K-5 to K-6 Record = 2630.58' Measured = 2630.84'
 Angle line K-5 & K-4 to K-5 & K-6 Record = 180°-22'-38" Measured = 180°-21'-41"



C. Description of monument for corner and accessories established to perpetuate locating the position of the corner:

K-5) Southeast corner section 11, T.1 S., R.10 E., Redford Township
 Found a bronze disk with punch mark in a monument box at Southfield and Six Mile Road, concrete.
 The selected location is accepted by the contractor and is generally accepted by professional surveyors as the best available evidence of the position of the corner.

WITNESSES:
 Set P.K. nail and WCR tag #10705 cut cross in walk N31°-32'-16"E distance=46.30', Set P.K. nail and WCR tag #10705 cut cross in walk S37°-17'-09"E distance=47.23', Set P.K. nail and WCR tag #10705 cut cross in walk S32°-57'-01"W distance=47.31', Set P.K. nail and WCR tag #10705 cut cross in walk N35°-48'-12"W distance=46.07'

Signed by William L. Roskelly
 Surveyor's Michigan License No. 10705

Date 12-30-96
 42
 70
 30