

DEC 22 1998
FILE DO NOT MAIL

SURVEY & REMONUMENTATION

MAR 02 1999

LAND CORNER RECORDATION CERTIFICATE
Filing Requirement of Act 74, Mich. P.A. 1970

SECTION

For corners in

<u>WAYNE</u> <small>(County)</small>	Located In:	Corner Code <u>≠#</u>
1. Public Land Survey	T <u>2</u> S R <u>9</u> E	<u>I-8</u>
	T _____ R _____	<u>WESTLAND</u>
	T _____ R _____	<u>NANKIN TWP (08)</u>
	T _____ R _____	_____
2. Property Controlling in Section	S _____ T _____ R _____	_____
	S _____ T _____ R _____	_____
3. Miscellaneous Property in Sec.	S _____ T _____ R _____	_____
	S _____ T _____ R _____	_____
4. Lot No. _____, Recorded Plat _____		
5. Private Claims _____		

Compliance with
ACT 345, P.A. 1990
APPROVED ON: 12-10-98 *DPD*
WAYNE COUNTY REMONUMENTATION
PEER GROUP COMMITTEE
Register of Deeds Stamp & File Number

98455375LS Page 8 of 12/22/1998 08:30AM

I, PETER P. PALCZYNSKI in a field survey on 1 DECEMBER, 19 98, do hereby certify that under requirements of P.A. 74, Michigan P.A. of 1970, the corner points mentioned in lines 1 and 2 above were in conformance with regulations and rules therefore as required in the current manual of survey instructions of the United States Department of the Interior, Bureau of Land Management or by a decree of a Court of Law and/or that the corner points mentioned in lines 3, 4 and 5 above were in conformance with the rules of the Michigan Board of Land Surveyors or by a Decree of a Court of Law, established, re-established, monumented, re-monumented, recovered, found as expressed below:

NOTE: Not more than 4 corners, all in the same town and range, may be recorded on this certificate.

A. Description of original monument and accessories and/or subsequent restoration:

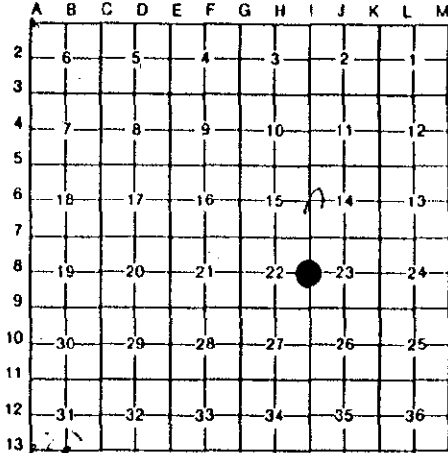
1816 G.L.O. - SET POST B.O. 10" S37°W 23 LKS.
JOSEPH FLETCHER MAPLE 9" S84°W 23 LKS.

SEE BACK OF THIS SHEET (NEXT PAGE)
FOR CONTINUATION OF SECTION "A"

\$4.00 REMONUMENTATION

\$13.00 DEED

RECORDED
FOREST E. YOUNGLOOD, REGISTER OF DEEDS
WAYNE COUNTY, MI
Receipt #101465



B. Description of corner evidence found and/or method applied in restoring or reestablishing corner:

FOUND 1" IRON PIPE IN CONC MON / MONUMENT BOX, AT CENTERLINE INTERSECTION OF MERRIMAN RD & AVONDALE AVE IN 63' WIDE CONCRETE PAVEMENT WITH CONCRETE CURBS. SET 1/2" STEEL BAR IN EXISTING CONC MON WITH REMON ALUMINUM CAP STAMPED "PPP PS #30096"

MEASURED:
I-7/I-8/J-8 = 88° 34' 33"
(88° 34' 38" / PLAT)
I-7/I-8/I-9 = 178° 18' 22"
(WPA = 178° 17' 40")
J-8/I-8/I-9 = 89° 43' 49"
(89° 46' / PLAT)
I-9/I-8/I-7 = 181° 41' 38"
(WPA = 181° 42' 10")

CORNER POSITION VERIFIED USING COMPARISONS TO RECORD INFORMATION FROM SECTION "A".

MEASURED:
I-8 / I-7 = 2620.31' (2620.08 / 2620.33' WPA)
I-8 / J-8 = 2659.09' (2657' +/- WPA)
I-8 / I-9 = 2635.42' (2634.91' / 2636.13' WPA)



C. Description of monument for corner and accessories established to perpetuate locating the position of the corner:

I-8, T2S, R9E	CENTERLINE FIRE HYDRANT STEM (5)(R=70.86')	N43°E	70.88'
FOUND 1" IRON PIPE IN CONC MON / MONUMENT BOX, AT CENTERLINE INTERSECTION OF MERRIMAN RD & AVONDALE AVE IN 63' WIDE CONCRETE PAVEMENT WITH CONCRETE CURBS. SET 1/2" STEEL BAR IN EXISTING CONC MON WITH REMON ALUMINUM CAP STAMPED "PPP PS #30096"	SET NAIL/WCRC TAG IN SOUTHEAST FACE UTILITY POLE	N57°E	57.68'
	FD PK NAIL / WCRC REF PT TAG IN NE FACE UT POLE (6)(R=60.10')	S60°E	60.00'
	FD PK NAIL / WCRC REF PT TAG IN SE FACE UT POLE (7)(R=57.80')	S56°W	57.70'
	FD PK NAIL / WCRC REF PT TAG IN SW FACE UT POLE (8)(R=60.70')	N58°W	60.60'

SELECTED LOCATION IS ACCEPTED BY THE CONTRACTOR AND IS GENERALLY ACCEPTED BY PROFESSIONAL SURVEYORS AS THE BEST AVAILABLE EVIDENCE OF THE POSITION OF THE ORIGINAL CORNER.

Signed by *PP* Date 21 DEC 98

Surveyor's Michigan License No. 30096
2S9E1-8.DOC R LCR 13 4R 3PG U *DPD*

1998 WAYNE COUNTY REMONUMENTATION PROGRAM

Continuation of Section "A"

NANKIN TOWNSHIP TOWN 2 SOUTH, RANGE 9 EAST
I-8 (SECTION CORNER 22 & 23)

History compiled by:
Peter P. Palczynski, P.S. # 30096
AMBIT LAND SURVEYORS, INC.

SURVEY &
REMONUMENTATION

MAR 02 1999

SECTION

DATE	COMPANY SURVEYOR JOB #	P.A. 74 L.C.R.C.	LOCATION OF SURVEY	MONUMENT DESCRIPTION	WITNESSES	BEARING & DISTANCE	ID #	COMMENT
1816	G.L.O. JOSEPH FLETCHER W.P.A.			SET POST	B.O. 10" MAPLE 9" 22" MAPLE	S37°W 23 LKS S84°W 23 LKS NE 39.10' SW 41.03' SW 74.13' NW 80.02'	1 2 3 4	NOTES = 40.00 CHAINS GONE GONE GONE GONE
1930'S				MON (W-24 #100)	MON LIGHT POLE			W.P.A. RECORD: I-8/I-7 = 2620.08' / 2620.33' I-8/I-9 = 2634.91' / 2636.13' I-7/I-8/I-9 = 178° 17' 40" I-9/I-8/I-7 = 181° 42' 10"
1924			SW 1/4 SECTION 23 T2S R 9E	NOT STATED	NOT STATED 4	I-8 / I-9 = 2634.6' / PLAT J-8/I-8/I-9 = 89°46' / PLAT I-8/J-8 = 2659.55' / PLAT I-7/I-8/J-8 = 88°34'38" / PLAT		MEAS = 2635.42' MEAS = 89°43' 49" MEAS = 2659.09' MEAS = 88° 34' 33"
25 JUL 25	GEORGE JEROME REG. CIVIL ENG & SURVEYOR		NW 1/4 SECTION 25 T2S R9E	NOT STATED	NOT STATED			
3 SEP 27	G.W. FRANCIS REG CIVIL ENGINEER		NE 1/4 SECTION 22 T2S R9E	NOT STATED	NOT STATED			H-8 NOT FOUND
3 MAY 28	FRANK C. EISENACH RLS		SE 1/4 SECTION 22 T2S R9E	NOT STATED	NOT STATED			H-8 NOT FOUND
16 OCT 74	LAND SEA CORP GEORGE KATTOUAH RLS		NE 1/4 SECTION 22 T2S R9E	FD IRON PIPE IN MON BOX	NOT STATED	I-8 / I-7 = 2619.82' / C.S.		MEAS = 2620.31'
27 NOV 74	WCR		I-8	MON W / BOX	CENTERLINE FIRE HYDRANT DE POLE W / BRASS TAG DE POLE W / BRASS TAG GUY POLE W / BRASS TAG	NE 70.86' SE 60.10' SW 57.80' NW 60.70'	5 6 7 8	MEAS = 70.86' MEAS = 60.00' MEAS = 57.70' MEAS = 60.60'

SURVEY &
REMONUMENTATION

MAR 02 1999

SECTION

DATE	OWNER	RC	MARKING	DESCRIPTION	BEARING	DISTANCE	MEASUREMENT
3 JUN 75	RICHARD SWANSON RLS	RC 423	I-8	CONCRETE MONUMENT	SPIKE/ BRASS TAG SW DE POLE	NW	60.70'
				IN BOX	CENTERLINE FIRE HYDRANT	NE	70.86'
					SPIKE/BRASS TAG NE DE POLE	SE	60.10'
					SPIKE/BRASS TAG SE DE POLE	SW	57.80'
10 APR 80	WCRC	SECTION CORNER WITNESS RECORD	I-8	1/4" ROD IN CONC MON /	DE POLE BRASS TAG / NAIL	SE	60.00'
				MON BOX	DE POLE BRASS TAG / NAIL	SW	57.80'
					DE POLE BRASS TAG / NAIL	NW	60.70'
6 FEB 81	R. M. PITTS RLS	RC753	I-8	CONCRETE MONUMENT	DE POLE BRASS TAG / NAIL	SE	60.00'
				IN BOX	DE POLE BRASS TAG / NAIL	SW	57.80'
					DE POLE BRASS TAG / NAIL	NW	60.70'