

FILE DO NOT MAIL LAND CORNER RECORDATION CERTIFICATE
 Filing Requirement of Act 74, Mich. P.A. 1970

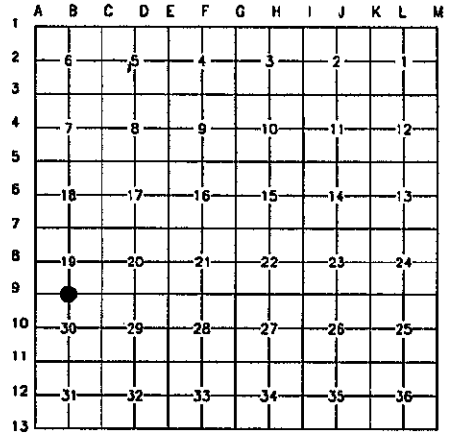
For corners in

WAYNE (County)	Located In: CITY OF ROMULUS	Corner Code #
1. Public Land Survey	T <u>3 S</u> R <u>9 E</u>	<u>B-9</u>
	T _____ R _____	_____
	T _____ R _____	_____
	T _____ R _____	_____
2. Property controlling in Section	S _____ T _____ R _____	_____
	S _____ T _____ R _____	_____
3. Miscellaneous Property in Sec.	S _____ T _____ R _____	_____
	S _____ T _____ R _____	_____
4. Lot No. _____, Recorded Plot _____		
5. Private Claims _____		

Compliance with
 ACT 345, P.A. 1990
 APPROVED ON: 12-7-99
 WAYNE COUNTY REMONUMENTATION
 PEER GROUP COMMITTEE
 Register of Deeds Stamp & File Number

I, CHRISTOPHER S. LAMUS, in a field survey on MARCH 2, 19 99, do hereby certify that under requirements of P.A. 74, Michigan P.A. of 1970, the corner points mentioned in lines 1 and 2 above were in conformance with regulations and rules therefore as required in the current manual of survey instructions of the United States Department of the Interior, Bureau of Land Management or by decree of a Court of Law and/or that the corner points mentioned in lines 3, 4 and 5 above were in conformance with the rules of the Michigan Board of Land Surveyors or by Decree of a Court of Law; established, re-established, monumented, re-monumented, recovered, found as expressed below:

NOTE: Not more than 4 corners, all in the same town and range, may be recorded on this certificate



A. Description of original monument and accessories and/or subsequent restoration:

ORIG. GOVERNMENT NOTES 1817
 WITNESSED BY FLETCHER - SET POST
 S 31° W 23 LINKS 6" POPLAR (1)
 S 4° W 33 LINKS 6" POPLAR (2)

NO G.L.D. WITNESSES REMAIN

RECORDED &
 FEB 28 2000
 SECTION

B. Description of corner evidence and/or method applied in restoring or reestablishing corner:

WAYNE CO. BUREAU OF TAXATION (1930'S) MONUMENT (NO DESCRIPTION) N.W. 56.65' 20" MAPLE (3) GONE N.W. 71.23' 20" MAPLE (4) GONE SLY 40.45' 2-12" MAPLES (5) GONE S.E. 34.46' 20" OAK (6) GONE N.E. 29.44' 14" OAK (7) GONE	WAYNE CO. ROAD COMMISSION (1970) MONUMENT (NO DESCRIPTION) N.W. 56.65' 20" MAPLE (3) GONE N.W. 71.23' 20" MAPLE (4) GONE SLY 40.45' 2-12" MAPLES (5) GONE S.E. 34.46' 20" OAK (6) GONE N.E. 29.44' 14" OAK (7) GONE
--	---

DISTANCE TO C-9 2644.64' (M) RECORDED AS 2644.32' BY WAYNE COUNTY BUREAU OF TAXATION.
 DISTANCE TO A-9 2620.27' (M) RECORDED AS 2620.13' BY WAYNE COUNTY BUREAU OF TAXATION.
 ANGLE @ B-9 FROM A-9 TO C-9 180°03'02" (M) RECORDED AS 180°03'30" PER W.C.B.T. SECTION MAPS.

C. Description of monument for corner and accessories established to perpetuate locating the position of the corner:

B-9
 FOUND P.K. NAIL @ SURFACE. EXCAVATED FURTHER AND FOUND 3/4" IRON ROD 0.60' BELOW ASPHALT SURFACE. SET MON. BOX. SET BRASS W.C. WASHER AND SURVEYOR'S CAP #41914 OVER 3/4" IRON PIPE. CORNER IS LOCATED IN WABASH RD. AND COGSWELL RD.
 EAST 77.18' NEAR EDGE OF M.H. (8)
 S 60° E 83.85' SET W.C. RE-MON BRASS WASHER IN N. SIDE 32" MAPLE. (9)
 S 28° W 104.98' SET W.C. RE-MON BRASS WASHER IN E. SIDE 38" MAPLE. (10)
 S 52° W 73.92' CENTERLINE TDP-NUT ON F. HYD. (11)
 N 14° W 41.57' SET W.C. RE-MON BRASS WASHER IN E. SIDE POWER POLE. (12)



THE SELECTED LOCATION IS ACCEPTED BY THE CONTRACTOR AND IS GENERALLY ACCEPTED BY PROFESSIONAL SURVEYORS AS THE BEST AVAILABLE EVIDENCE OF THE POSITION OF THE ORIGINAL CORNER.

Signed by Christopher S. Lamus
 Surveyor's Michigan License No. 41914

Date 12/23/99

R LCR 9 4R 1Pg A. DPJ