

For corners in
Wexford

Corner Code - //

- | | | | | | |
|----|----------------------|------|-------|-------|-----|
| 1. | Public Land Survey | | T 24N | R 11W | D-7 |
| | | | T 24N | R 11W | E-5 |
| | | | T | R | |
| | | | T | R | |
| 2. | Property Controlling | S 17 | T 24N | R 11W | 16 |
| | in Section | S 17 | T 24N | R 11W | 13 |
| 3. | Miscellaneous | S | T | R | |
| | Property in Sec. | S | T | R | |

Register of Deeds Stamp & File Number

4. Lot No. _____, Recorded Plat _____
5. Private Claims _____

I, **Carl F. Roser**, in a field survey on **May 11**, 19 **87**, do hereby certify that under requirements of P.A. 74, Michigan P.A. of 1970, the corner points mentioned in lines 1 and 2 above were in conformance with regulations and rules therefore as required in the current manual of survey instructions of the United States Department of the Interior, Bureau of Land Management or by a decree of a Court of Law and/or that the corner points mentioned in lines 3, 4 and 5 above were in conformance with the rules of the Michigan Board of Land Surveyors or by a Decree of a Court of Law, established, re-established, monumented, re-monumented, recovered, found as expressed below:

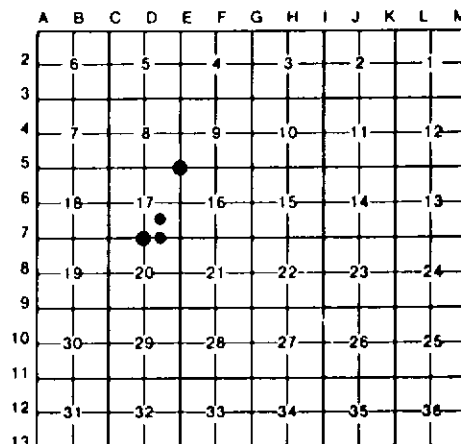
NOTE: Not more than 4 corners, all in the same town and range, may be recorded on this certificate.

C. Continued:

XX

| Set | DNR | mon | <u>D-7</u> | cedar | post |
|-----|-----|------|------------|-------|------|
| 12" | Oak | | | N32°E | |
| 6" | Oak | | | S74°E | |
| 12" | Red | Pine | | S28°W | |
| 6" | Oak | | | N32°W | |

| | | |
|--|-------|--------|
| | | E-5 |
| Fd 1 $\frac{1}{4}$ " x 3 $\frac{1}{2}$ " R.R. Rail | | |
| NW Cor of 4'x 4' | | |
| Conc slab-Phone Box | S36°E | 47.1' |
| 18" Maple | N16°E | 110.6' |
| 6" Maple | N66°E | 107.0' |
| Set cedar post | | |
| w/loc tag | N45°W | 50.' |



B. Description of corner evidence found and/or method applied in restoring or reestablishing corner:

- 16 - Established SW corner of $SE\frac{1}{4}$ - $SE\frac{1}{4}$ of Section 17 per standard B.L.M. instructions.

- 13 - Established center of SE $\frac{1}{4}$ of Section 17 per standard B.L.M. instructions.

- D-7 - Re-established S $\frac{1}{4}$ corner of Section 17, equidistant & on line between section corners to East & West.

- E-5 - Fd. & accepted R.R. rail iron (verticle) for NE corner Section 17. Fits 1969 Road Commission wits & 1916 Mich. Civil Engr. distances south 1/2 mile. Corner also fd. & used by R.L.S., J. Wilcox in 1974 survey in Section 16.

C Description of monument for corner and accessories established to perpetuate locating the position of the corner:

Drove 5/8" x $\frac{16}{34}$ " rerod with RLS cap
& set cedar post w/loc tag

Drove 5/8" x $\frac{13}{34}$ " reord w/RLS cap &
set cedar post w/loc tag

| | | |
|----------------|-------|-------|
| 13" Red Pine | S82°E | 21.9' |
| 13" White Pine | S20°W | 46.3' |
| 13" Red Pine | S72°W | 11.9' |

| | | |
|------------------|-------|-------|
| 17" Red Pine | S40°E | 36.5' |
| 4" White Pine | N30°W | 27.1' |
| 13" Triple Maple | S82°W | 16.0' |

Signed by Carl F. Rorer 8-19-87

Surveyor's Michigan License No. 12028

Date _____

