



**DEPARTMENT OF NATURAL RESOURCES  
STATE OF MICHIGAN**

**TIMBER SALE PROSPECTUS #6049**

SCHEDULED SALE DATE AND TIME: 4:00 p.m. (local time) on December 19, 2017.

LOCATION: KALKASKA FIELD OFFICE, 2089 N BIRCH ST, KALKASKA, MI 49646.

CONTACT NAME: David Lemmien

PHONE NUMBER: (231) 922-5280

PROSPECTUS NOTE: The bidder is advised to inspect the sale area and review the location, estimated volumes, operating costs and contract terms of proposed sales. Please be aware that some landowners may request 60 days or more notice for access across their land.

Notice is hereby given that bids will be received by the Unit Manager, TRAVERSE CITY MANAGEMENT UNIT, for certain timber on the following described lands:

Yotta Oak (61-654-17)

Crawford County, Advertised Price \$129,813.50, 270.1 Acres, Aspen, Hardwood.

SALE NOTE: Please note that this sale is on Military Board Land and is NOT certified. Timing restrictions and chipping requirements will apply.

## TIMBER SALE INFORMATION

Yotta Oak (61-654-17)

Crawford County (Advertised Price \$129,813.50)

SALE NOTE: Please note that this sale is on Military Board Land and is NOT certified. Timing restrictions and chipping requirements will apply.

A timber sale contract for this lump sum, sealed bid timber sale will be awarded to the responsible bidder offering the highest sealed bid price. Bids must be at or above the following advertised price for each species:

<u>PRODUCTS &amp; SPECIES</u>	<u>ESTIMATED UNITS*</u>		<u>ADVERTISED PRICE</u>
Sawtimber			
B. T. Aspen	32.60	MBF	\$ 98.00 / MBF
Bl/R/Hybrid Oak	639.50	MBF	\$ 97.00 / MBF
Red Maple	2.60	MBF	\$ 118.00 / MBF
Red Pine	46.50	MBF	\$ 106.00 / MBF
White Oak	4.00	MBF	\$ 45.00 / MBF
Pulpwood			
B. T. Aspen	548.00	Cords	\$ 18.15 / Cord
Bl/R/Hybrid Oak	2,925.00	Cords	\$ 12.10 / Cord
Jack Pine	168.00	Cords	\$ 12.90 / Cord
Misc. Species 1	413.00	Cords	\$ 6.50 / Cord
Red Maple	240.00	Cords	\$ 16.75 / Cord
Red Pine	121.00	Cords	\$ 37.20 / Cord
White Oak	38.00	Cords	\$ 12.10 / Cord

### **BOND AND PAYMENT SCHEDULE:**

1. A bond in the amount of \$12,981.35 to insure faithful performance of the conditions of the contract will be deposited by the successful bidder within 21 days of the sale award.
2. Cutting in any sale or unit without the required advance payment would be considered a trespass.
3. Total payment must be paid in advance or according to the following schedule:
  - (a) Ten percent (10%) of the sale value must be paid within 21 days of the sale award.
  - (b) The 10% down payment will be credited towards the first unit cut.
4. If no cutting takes place, the 10% down payment will not be refunded.
5. Operations on the contract issued will terminate on 12/31/2020.

**Description of Timber by Payment Unit (PU)**

PU	MARKET GROUP	PRODUCT	QUANTITY	UNIT	ACRES	ADVERTISE PRICE
1	B. T. Aspen	Sawtimber	9.4	MBF	42.3	\$20,217.60
	Bl/R/Hybrid Oak		99.4	MBF		
	<i>Bl/R/Hybrid Oak</i>		75.4	<i>MBF</i>		
	<i>Red Oak</i>		24.0	<i>MBF</i>		
	Red Maple	Pulpwood	0.8	MBF		
	B. T. Aspen		124.0	Cords		
	Bl/R/Hybrid Oak		487.0	Cords		
	<i>Bl/R/Hybrid Oak</i>		405.0	<i>Cords</i>		
	<i>Red Oak</i>		82.0	<i>Cords</i>		
	Jack Pine		6.0	Cords		
	<i>Jack Pine</i>		6.0	<i>Cords</i>		
	Misc. Species 1		36.0	Cords		
	<i>Misc. Species 1</i>		23.0	<i>Cords</i>		
	<i>Misc. Species 2</i>		13.0	<i>Cords</i>		
	Red Maple		66.0	Cords		
2	B. T. Aspen	Sawtimber	13.5	MBF	51.5	\$24,476.45
	Bl/R/Hybrid Oak		129.0	MBF		
	<i>Bl/R/Hybrid Oak</i>		64.7	<i>MBF</i>		
	<i>Red Oak</i>		64.3	<i>MBF</i>		
	B. T. Aspen	Pulpwood	149.0	Cords		
	Bl/R/Hybrid Oak		566.0	Cords		
	<i>Bl/R/Hybrid Oak</i>		305.0	<i>Cords</i>		
	<i>Red Oak</i>		261.0	<i>Cords</i>		
	Misc. Species 1		90.0	Cords		
	<i>Misc. Species 1</i>		40.0	<i>Cords</i>		
	<i>Misc. Species 2</i>		50.0	<i>Cords</i>		
	Red Maple		30.0	Cords		
3	Bl/R/Hybrid Oak	Sawtimber	82.2	MBF	38.6	\$15,994.50
	<i>Bl/R/Hybrid Oak</i>		82.2	<i>MBF</i>		
	B. T. Aspen	Pulpwood	16.0	Cords		
	Bl/R/Hybrid Oak		562.0	Cords		
	<i>Bl/R/Hybrid Oak</i>		562.0	<i>Cords</i>		
	Jack Pine		10.0	Cords		
	<i>Jack Pine</i>		10.0	<i>Cords</i>		
	Misc. Species 1		46.0	Cords		
	<i>Misc. Species 1</i>		46.0	<i>Cords</i>		
4	Red Maple	Pulpwood	30.0	Cords	117.4	\$56,996.75
	B. T. Aspen		9.7	MBF		
	Bl/R/Hybrid Oak		320.9	MBF		
	<i>Bl/R/Hybrid Oak</i>		91.9	<i>MBF</i>		
	<i>Red Oak</i>		229.0	<i>MBF</i>		
	Red Maple		1.8	MBF		
	B. T. Aspen		259.0	Cords		
	Bl/R/Hybrid Oak		1,244.0	Cords		
	<i>Bl/R/Hybrid Oak</i>		545.0	<i>Cords</i>		
	<i>Red Oak</i>		699.0	<i>Cords</i>		
	Jack Pine		36.0	Cords		
	<i>Jack Pine</i>		36.0	<i>Cords</i>		
	Misc. Species 1		236.0	Cords		
	<i>Misc. Species 1</i>		93.0	<i>Cords</i>		
	<i>Misc. Species 2</i>		143.0	<i>Cords</i>		
	Red Maple		112.0	Cords		
5	Bl/R/Hybrid Oak	Sawtimber	8.0	MBF	20.3	\$12,128.20
	<i>Red Oak</i>		8.0	<i>MBF</i>		

Description of Timber by Payment Unit (PU), con't

PU	MARKET GROUP	PRODUCT	QUANTITY	UNIT	ACRES	ADVERTISE PRICE
5 con't	Red Pine	Sawtimber	46.5	MBF		
	White Oak		4.0	MBF		
	Bl/R/Hybrid Oak	Pulpwood	66.0	Cords		
	Red Oak		66.0	Cords		
	Jack Pine		116.0	Cords		
	Jack Pine	Sawtimber	4.5	MBF		
	Jack Pine	Pulpwood	107.0	Cords		
	Misc. Species 1		5.0	Cords		
	Misc. Species 2		5.0	Cords		
	Red Maple		2.0	Cords		
	Red Pine		92.0	Cords		
	White Oak		38.0	Cords		
TOTAL:			725.2	MBF		
TOTAL:			4,453.0	Cords		

## **Sale Specific Conditions & Requirements**

**Sale Name: Yotta Oak**

**Sale Number: 61-654-17 Seq#: 1**

### **1 - Sale Area**

#### 1.2 - Boundaries

##### 1.2.1 - Painted boundaries (1/14)

The sale boundary and Payment Unit boundaries are marked and identified by red and yellow paint. Exterior sale boundary lines against state are marked with red paint. Interior Payment Unit boundaries are marked with yellow paint. The painted boundary line and Payment Unit line trees are not Included Timber and are to be protected.

### **2 - Timber Specifications**

#### 2.1 - Included Timber

##### 2.1.4 - Designated timber unit(s) (6/17)

Within Payment Unit(s) 1, 2, and 3, all aspen, black/red/hybrid oak, red maple, and jack pine trees are designated for cutting regardless of merchantability. Do not cut any red pine, white pine, or white oak.

##### 2.1.7 - Leave tree marked unit(s) (6/14)

Within Payment Unit(s) 4 and 5, all aspen, red maple and jack pine trees, which meet minimum piece specifications in 2.2 Utilization, are designated for cutting.

In addition, cut all black/red/hybrid oak, all red pine, and white oak greater than 4" at DBH, except do not cut trees marked with green paint above and below stump height.

##### 2.1.11 - Description of timber note (2/04)

Note that Misc. Species 1 is dead oak, which may be cut throughout the sale.

#### 2.2 - Utilization

##### 2.2.2 - Chipping required (5/14)

This area must be chip harvested to meet National Guard requirements. Products may be produced as roundwood and forwarded to decking areas in final product length, but the tops must be left intact and skidded to the landing for chipping in order to minimize the amount of residual slash left in Military training areas. The requirement to retain approximately 1/6 to 1/3 of tree tops and limbs less than four inches in diameter does not apply (G. C. & R. 2.2). This is because this sale is not certified.

##### 2.2.3 - Stump heights (4/07)

Stump heights within the Sale Area shall not exceed 6 inches for all trees. This is in order to accommodate military requirements. A written waiver of this requirement may be obtained if wet weather, sandy roads, or training restrictions make winter logging necessary.

### **4 - Transportation**

#### 4.1 - Construction

##### 4.1.6 - Road construction (1/09)

Construction of new roads or improvements of existing roads shall be done in such a way as to minimize the environmental and visual impacts. Merchantable trees shall be cut and utilized unless otherwise directed. Non-merchantable trees shall be severed and laid flat on the ground. Slash shall be chipped, utilized or otherwise removed from the sale. Stumps shall be set upright, not left on edge, and be moved at least 10 feet away from the road edge. Disturbed soil shall be feathered into the woods and not left in berms or windrows.

##### 4.1.7 - Road closure (10/11)

All new roads and overgrown roads that are reopened must be blocked to vehicle traffic within 30 days of completion of hauling. In general, this will require constructing a four (4') foot high berm of stumps and logs covered with earth. These

roads must be rendered impassable to cars, trucks and ORVs. Contact the sale administrator for specific details of design and placement.

#### 4.1.11 - Permits (2/12)

The Purchaser will secure any necessary Kalkaska County Road Commission driveway permits that may be required.

### 4.4 - Access

#### 4.4.3 - Access gate (12/08)

Some access roads around the ranges are blocked by locked gates. Camp Grayling Range Control may allow use of a gate key. Range Control may be contacted at 989-344-6156. Gates must be locked at all times to prevent someone other than the Purchaser from going through the gate and being locked in.

## 5 - Operations

### 5.1 - Notification

#### 5.1.1 - Pre-sale conference (10/16)

A pre-sale conference on site between the Purchaser and sale administrator is required prior to beginning any operations to determine landing and road locations. The Sale Administrator must be contacted at least 5 days in advance to schedule the conference.

#### 5.1.5 - National Guard notification (2/15)

This sale is upon lands utilized for training by the Michigan National Guard - Camp Grayling. A minimum of five (5) business days prior to opening this sale, the producer must request that the sale administrator contact the military for information regarding training plans that may impact sale operations.

### 5.2 - Conduct of Operations

#### 5.2.3 - Operating Restrictions

##### 5.2.3.4 - Oak wilt restriction (9/17)

Within Payment Units 1, 2, 3, 4, and 5, unless changed by written agreement, cutting, skidding, hauling and brushing of access roads are not permitted during the period of April 15 to July 15. Operations may be allowed if specific steps are taken to prevent damaging uncut oak during the high risk period. Those steps include completing all road brushing before April 15th, clearing a tree-length buffer along uncut oak cover before April 15th or leaving an uncut buffer there until after July 15th. This is necessary to reduce the spread of oak wilt. For more information, contact the Unit Manager or his/her representative.

##### 5.2.3.7 - National Guard training restriction (1/09)

Operations on this contract may not be allowed during National Guard training operations. Typically, the restricted period is from May 1 to October 31. The Purchaser must check with the Sale Administrator who will coordinate the cutting schedule with the Military. All harvest equipment and timber products must be removed from the sale area during the restricted period.

#### 5.2.32 - Decking/landing restoration (9/13)

All decking and landing areas must have the surface area restored to a condition equal to or better than before. This is to ensure the proper regeneration of the stand. Wood debris, chips and "cookies" from trimmings must be removed or scattered away from landing and loading areas and may not be windrowed on the edge.

#### 5.2.38 - No decking against live trees (2/04)

Cut products may not be decked against unmarked or designated leave trees.

### 5.4 - Soil Protection

#### 5.4.1 - Rutting restriction, general (7/16)

Operations are to cease immediately if equipment and weather conditions result in rutting of roads and/or skid trails which is 12 inches or greater in depth and 50 feet in length. The Unit Manager or his/her representative may restrict hauling and/or skidding if ruts exceed the specified depth. With the Unit Manager or his/her representative's approval, the Purchaser may return to the area when the risk of rutting has decreased.

#### 5.4.4 - Slope protection (5/15)

Skid trails and roads on slopes shall be water barred with slash, stumps, and/or clean straw bales native to the area as soon as use is complete to prevent erosion.

## 6 - Safety and Fire Prevention

### 6.2 - Signing

#### 6.2.1 - Road posting (9/09)

The Purchaser is responsible for posting and maintaining caution signs on major haul roads prior to beginning operations. The road must be posted at appropriate distances from the sale area to warn of logging activity and truck traffic. Signs must be removed when harvest operations are suspended or completed. The Purchaser will provide these signs.

SKIP

#### 6.4 - Unexploded ordinance (7/15)

Be aware that the sale area could contain UXO (unexploded ordinances). Do not touch, or drive over any metal objects. If any objects are found, please flag the area and notify the Unit Manager or his/her representative, so that they can make arrangements with the Military.

## 7 - Other Conditions

### 7.5 - Loss

#### 7.5.1 - Deteriorating timber (7/09)

The sale area has received damage from age-related oak decline. The Purchaser should harvest the wood as soon as possible. The Department of Natural Resources is held free of responsibility of any further damage or deterioration due to delay in harvesting.

### 7.10 - Certified Timber

#### 7.10.1 - Non-certified timber (2/16)

The area encompassed by this timber sale is not certified to the standards of the Forest Stewardship Council (FSC) or the Sustainable Forestry Initiative (SFI). Forest products from this sale may not be delivered to the mill as "FSC and / or SFI certified". The lands within this sale are managed for military training.



## TIMBER SALE MAP

This information provided by authority of Part 525, 1994 PA 451, as amended.

Sale Number

61-654

Year

2017

Forest Management Unit  
Traverse CityCounty  
Kalkaska

Mapped By Armstrong

Date  
9/26/2017Page  
1 of  
1Township 26N  
26NRange 4W  
5W

Section(s) and Subdivision(s)

Sec. 30: NWNW, SWNW

25: N1/2, SWSW, E1/2SW, SE1/4; 26: SENE; 36: N1/2NW, N1/2NE

Scale  
1:15,840

## Cover Type

A = Aspen  
B = Paper Birch  
C = Cedar  
D = Treed Bog  
E = Swamp Hdwoods  
F = Spruce Fir  
G = GrassH = Hemlock  
J = Jack Pine  
L = Lowland Brush  
LM = Lowland Mixed  
M = Mpl, Bch, Brch  
MC = Mixed Conifer  
MD = Mixed DeciduousN = Marsh  
O = Oak  
P = Lowland Poplar  
Q = Mixed Swamp Conifer  
R = Red Pine  
S = Black Spruce  
T = TamarackU = Upland Brush  
UM = Upland Mixed  
V = Bog or Marsh  
W = White Pine  
X = Non Stocked  
Z = Water

## Density

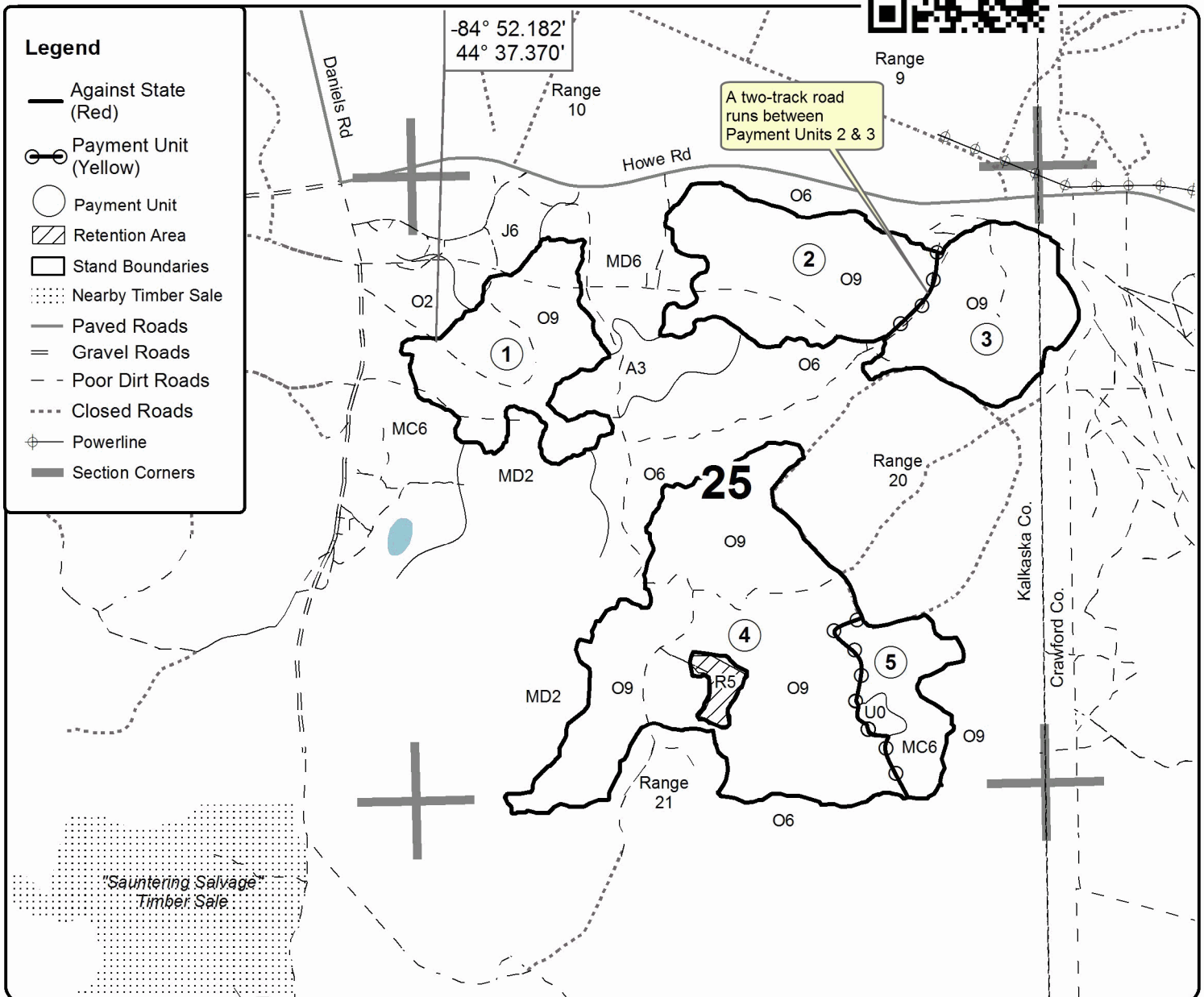
0 = Non Stocked  
1 = Seedling Sapling Poor  
2 = Seedling Sapling Medium  
3 = Seedling Sapling Well  
4 = Pole Timber Poor  
5 = Pole Timber Medium  
6 = Pole Timber Well  
7 = Saw Timber Poor  
8 = Saw Timber Medium  
9 = Saw Timber Well

Unit	Acres	Unit	Acres
1	42.3	4	117.4
2	51.5	5	20.3
3	38.6		

Yotta Oak  
Compartment 230  
270.1 acres

## Legend

- Against State (Red)
- Payment Unit (Yellow)
- Payment Unit
- ▨ Retention Area
- Stand Boundaries
- ⋯ Nearby Timber Sale
- Paved Roads
- Gravel Roads
- - Poor Dirt Roads
- ⋯ Closed Roads
- ⊕ Powerline
- ⊕ Section Corners



0 0.25 0.5 0.75 1 Miles