



**DEPARTMENT OF NATURAL RESOURCES
STATE OF MICHIGAN**

TIMBER SALE PROSPECTUS #6336

SCHEDULED SALE DATE AND TIME: 10:00 a.m. (local time) on April 2, 2019.

LOCATION: ATLANTA MGMT UNIT, 13501 M 33, ATLANTA, MI 49709.

CONTACT NAME: Cody Stevens

PHONE NUMBER: (989) 785-4251

PROSPECTUS NOTE: The bidder is advised to inspect the sale area and review the location, estimated volumes, operating costs and contract terms of proposed sales. Please be aware that some landowners may request 60 days or more notice for access across their land.

Notice is hereby given that bids will be received by the Unit Manager, ATLANTA MANAGEMENT UNIT, for certain timber on the following described lands:

County Dog Mix (54-001-18) / T29N, R02E, SEC. 1 , NWNW,NWSW.

T29N, R02E, SEC. 11, SW.

T29N, R02E, SEC. 14, N1/2NW,SENW,NWNE,S1/2NE,NESW.

T29N, R02E, SEC. 14, NWSE.

T29N, R02E, SEC. 2 , N1/2SE,SWSE.

T29N, R02E, SEC. 2 , NENW,N1/2NE,SWNE,N1/2SW,SESW.

T30N, R02E, SEC. 35, S1/2SE.

Montmorency County, Advertised Price \$285,041.05, 273.8 Acres, Aspen, Hardwood.

SALE NOTE: A recreation site such as a trail, pathway, or campground is within the sale area or the vicinity. Certain restrictions/specifications may be applicable including time restrictions.

TIMBER SALE INFORMATION

County Dog Mix (54-001-18)

T29N, R02E, SEC. 1; T29N, R02E, SEC. 11; T29N, R02E, SEC. 14; T29N, R02E, SEC. 2; T30N, R02E, SEC. 35.
Montmorency County (Advertised Price \$285,041.05)

SALE NOTE: A recreation site such as a trail, pathway, or campground is within the sale area or the vicinity. Certain restrictions/specifications may be applicable including time restrictions.

A timber sale contract for this lump sum, sealed bid timber sale will be awarded to the responsible bidder offering the highest sealed bid price. Bids must be at or above the following advertised price for each species:

<u>PRODUCTS & SPECIES</u>	<u>ESTIMATED UNITS*</u>	<u>ADVERTISED PRICE</u>
Sawtimber		
Bl/R/Hybrid Oak	41.70 MBF	\$ 129.00 / MBF
Mixed Aspen	124.50 MBF	\$ 114.00 / MBF
Red Maple	24.00 MBF	\$ 176.00 / MBF
Red Oak	417.20 MBF	\$ 224.00 / MBF
Red Pine	15.90 MBF	\$ 141.00 / MBF
White Pine	10.60 MBF	\$ 102.00 / MBF
Pulpwood		
Balsam Fir	3.00 Cords	\$ 33.25 / Cord
Jack Pine	104.00 Cords	\$ 27.95 / Cord
Mixed Aspen	2,795.00 Cords	\$ 32.70 / Cord
Mixed Hardwood	522.00 Cords	\$ 27.30 / Cord
Mixed Oak	1,634.00 Cords	\$ 31.85 / Cord
Red Pine	29.00 Cords	\$ 56.70 / Cord
White Pine	64.00 Cords	\$ 33.25 / Cord

BOND AND PAYMENT SCHEDULE:

1. A bond in the amount of \$14,252.05 to insure faithful performance of the conditions of the contract will be deposited by the successful bidder within 21 days of the sale award.
2. Cutting in any sale or unit without the required advance payment would be considered a trespass.
3. Total payment must be paid in advance or according to the following schedule:
 - (a) Ten percent (10%) of the sale value must be paid within 21 days of the sale award.
 - (b) The 10% down payment will be credited towards the first unit cut.
4. If no cutting takes place, the 10% down payment will not be refunded.
5. Operations on the contract issued will terminate on 06/30/2022.

Description of Timber by Payment Unit (PU)

PU	MARKET GROUP	PRODUCT	QUANTITY	UNIT	ACRES	ADVERTISE PRICE
1	BI/R/Hybrid Oak	Sawtimber	8.5	MBF	30.7	\$21,547.35
	Mixed Aspen		2.3	MBF		
	<i>B. T. Aspen</i>		1.7	MBF		
	<i>Quaking Aspen</i>		0.6	MBF		
	Red Maple		0.6	MBF		
	Red Oak		5.2	MBF		
	Red Pine		18.0	MBF		
	White Pine		3.4	MBF		
	Balsam Fir	Pulpwood	1.0	Cords		
	Jack Pine		15.0	Cords		
	<i>Jack Pine</i>	Sawtimber	0.9	MBF		
	<i>Jack Pine</i>	Pulpwood	13.0	Cords		
	Mixed Aspen		371.0	Cords		
	<i>B. T. Aspen</i>		88.0	Cords		
	<i>Quaking Aspen</i>		283.0	Cords		
	Mixed Hardwood		21.0	Cords		
	<i>Black Cherry</i>		3.0	Cords		
	<i>Red Maple</i>		18.0	Cords		
	Mixed Oak		51.0	Cords		
	<i>White Oak</i>	Sawtimber	0.6	MBF		
	<i>BI/R/Hybrid Oak</i>	Pulpwood	35.0	Cords		
	<i>Northern Pin Oak</i>		2.0	Cords		
	<i>Red Oak</i>		9.0	Cords		
	<i>White Oak</i>		4.0	Cords		
	Red Pine		8.0	Cords		
	White Pine		24.0	Cords		
	2	BI/R/Hybrid Oak	Sawtimber	8.6		
Mixed Aspen			3.0	MBF		
<i>B. T. Aspen</i>			2.3	MBF		
<i>Quaking Aspen</i>			0.7	MBF		
Red Maple			0.9	MBF		
Red Oak			7.1	MBF		
White Pine			3.7	MBF		
Balsam Fir		Pulpwood	2.0	Cords		
Jack Pine			19.0	Cords		
<i>Jack Pine</i>		Sawtimber	1.1	MBF		
<i>Jack Pine</i>		Pulpwood	17.0	Cords		
Mixed Aspen			361.0	Cords		
<i>B. T. Aspen</i>			118.0	Cords		
<i>Quaking Aspen</i>			243.0	Cords		
Mixed Hardwood			28.0	Cords		
<i>Black Cherry</i>			3.0	Cords		
<i>Red Maple</i>			25.0	Cords		
Mixed Oak			57.0	Cords		
<i>White Oak</i>		Sawtimber	0.7	MBF		
<i>BI/R/Hybrid Oak</i>		Pulpwood	37.0	Cords		
<i>Northern Pin Oak</i>			2.0	Cords		
<i>Red Oak</i>		11.0	Cords			
<i>White Oak</i>		6.0	Cords			
White Pine		28.0	Cords			
3	BI/R/Hybrid Oak	Sawtimber	2.9	MBF	37.7	\$32,747.75
	Mixed Aspen		17.4	MBF		
	<i>B. T. Aspen</i>		14.7	MBF		
	<i>Quaking Aspen</i>		2.7	MBF		
	Red Maple		1.8	MBF		

Description of Timber by Payment Unit (PU), con't

PU	MARKET GROUP	PRODUCT	QUANTITY	UNIT	ACRES	ADVERTISE PRICE
3 con't	Red Oak	Sawtimber	22.9	MBF		
	Red Pine		3.5	MBF		
	White Pine		2.1	MBF		
	Jack Pine	Pulpwood	26.0	Cords		
	<i>Jack Pine</i>		26.0	<i>Cords</i>		
	Mixed Aspen		451.0	Cords		
	<i>B. T. Aspen</i>		387.0	<i>Cords</i>		
	<i>Quaking Aspen</i>		64.0	<i>Cords</i>		
	Mixed Hardwood		58.0	Cords		
	<i>Red Maple</i>		58.0	<i>Cords</i>		
	Mixed Oak		170.0	Cords		
	<i>White Oak</i>	Sawtimber	2.6	<i>MBF</i>		
	<i>Bl/R/Hybrid Oak</i>	Pulpwood	37.0	<i>Cords</i>		
	<i>Red Oak</i>		105.0	<i>Cords</i>		
	<i>White Oak</i>		23.0	<i>Cords</i>		
	Red Pine		27.0	Cords		
	White Pine		7.0	Cords		
4	Bl/R/Hybrid Oak	Sawtimber	2.0	MBF	28.4	\$22,677.90
	Mixed Aspen		11.8	MBF		
	<i>B. T. Aspen</i>		10.0	<i>MBF</i>		
	<i>Quaking Aspen</i>		1.8	<i>MBF</i>		
	Red Maple		1.2	MBF		
	Red Oak		15.5	MBF		
	Red Pine		2.4	MBF		
	White Pine		1.4	MBF		
	Jack Pine	Pulpwood	44.0	Cords		
	<i>Jack Pine</i>		44.0	<i>Cords</i>		
	Mixed Aspen		316.0	Cords		
	<i>B. T. Aspen</i>		264.0	<i>Cords</i>		
	<i>Quaking Aspen</i>		52.0	<i>Cords</i>		
	Mixed Hardwood		39.0	Cords		
	<i>Red Maple</i>		39.0	<i>Cords</i>		
	Mixed Oak		115.0	Cords		
	<i>White Oak</i>	Sawtimber	1.8	<i>MBF</i>		
	<i>Bl/R/Hybrid Oak</i>	Pulpwood	25.0	<i>Cords</i>		
	<i>Red Oak</i>		71.0	<i>Cords</i>		
<i>White Oak</i>		15.0	<i>Cords</i>			
Red Pine		8.0	Cords			
White Pine		5.0	Cords			
5	Mixed Aspen	Sawtimber	40.4	MBF	37.5	\$43,430.55
	<i>B. T. Aspen</i>		25.2	<i>MBF</i>		
	<i>Quaking Aspen</i>		15.2	<i>MBF</i>		
	Red Maple		6.7	MBF		
	Red Oak		52.0	MBF		
	Mixed Aspen	Pulpwood	395.0	Cords		
	<i>B. T. Aspen</i>		324.0	<i>Cords</i>		
	<i>Quaking Aspen</i>		71.0	<i>Cords</i>		
	Mixed Hardwood		142.0	Cords		
	<i>Red Maple</i>		142.0	<i>Cords</i>		
	Mixed Oak		289.0	Cords		
	<i>Red Oak</i>		289.0	<i>Cords</i>		
	6	Mixed Aspen	Sawtimber	44.2		
<i>B. T. Aspen</i>			27.5	<i>MBF</i>		
<i>Quaking Aspen</i>			16.7	<i>MBF</i>		
Red Maple			7.3	MBF		

Description of Timber by Payment Unit (PU), con't

PU	MARKET GROUP	PRODUCT	QUANTITY	UNIT	ACRES	ADVERTISE PRICE
6 con't	Red Oak	Sawtimber	56.9	MBF		
	Mixed Aspen	Pulpwood	432.0	Cords		
	<i>B. T. Aspen</i>		354.0	<i>Cords</i>		
	<i>Quaking Aspen</i>		78.0	<i>Cords</i>		
	Mixed Hardwood		155.0	Cords		
	<i>Red Maple</i>		155.0	<i>Cords</i>		
	Mixed Oak		316.0	Cords		
<i>Red Oak</i>	316.0		<i>Cords</i>			
7	Bl/R/Hybrid Oak	Sawtimber	19.7	MBF	34.9	\$31,849.10
	Mixed Aspen	Pulpwood	5.4	MBF		
	<i>B. T. Aspen</i>		5.4	<i>MBF</i>		
	Red Maple		5.5	MBF		
	Red Oak		33.0	MBF		
	Mixed Aspen		469.0	Cords		
	<i>B. T. Aspen</i>		469.0	<i>Cords</i>		
	Mixed Hardwood		57.0	Cords		
	<i>Red Maple</i>		57.0	<i>Cords</i>		
	Mixed Oak		108.0	Cords		
	<i>Bl/R/Hybrid Oak</i>		44.0	<i>Cords</i>		
	<i>Red Oak</i>		64.0	<i>Cords</i>		
8	Red Oak		Sawtimber	224.6	MBF	34.8
	Mixed Hardwood	Pulpwood	22.0	Cords		
	<i>Red Maple</i>		22.0	<i>Cords</i>		
	Mixed Oak		527.0	Cords		
	<i>Red Oak</i>		527.0	<i>Cords</i>		
TOTAL:			641.9	MBF		
TOTAL:			5,164.0	Cords		

Sale Specific Conditions & Requirements

Sale Name: County Dog Mix

Sale Number: 54-001-18 Seq#: 1

1 - Sale Area

1.2 - Boundaries

1.2.1 - Painted boundaries (1/14)

The sale boundary and Payment Unit boundaries are marked and identified by red and/or green paint. Exterior sale boundary lines against state are marked with red paint. Interior retention areas are marked with red paint. Interior Payment Unit boundaries are marked with green paint. The painted boundary line trees are not Included Timber and are to be protected. Green painted trees designating an interior Payment Unit boundary are only to be cut when all surrounding Payment Units have been paid.

2 - Timber Specifications

2.1 - Included Timber

2.1.1 - Clearcut unit(s) with unmerchantable trees (6/14)

Within Payment Unit(s) 1-8, cut all trees that are two (2) inches or more at DBH, except do not cut any trees marked with purple paint within Payment Units 1-4. In addition, do not cut any red pine or white pine within Payment Units 5-7. Also, do not cut any white oak within Payment Units 3 and 4.

2.1.15 - Hazard trees near roads (7/13)

Cut and remove all standing dead trees within 100 feet of the cleared portion of Sage Lake Rd, Avery Hills Rd, Avery Lake Rd, and Vondette Rd. These trees may be utilized or must be scattered back into the sale area.

2.2 - Utilization

2.2.2 - Chipping required (2/18)

Payment Unit 8 must be chip harvested to facilitate subsequent planting operations. The Purchaser has the option to produce sawlogs or pulpwood bolts, but the remaining portion of the trees must be skid, chipped, and hauled within 60 days of severing/cutting stem(s). If the chipping deadline is not met/delayed, tops must be moved to a centralized location or damages will be determined and collected by the cost to complete the work. The requirement to retain approximately 1/6 to 1/3 of tree tops and limbs less than four inches in diameter is still applicable (G. C. & R. 2.2).

2.2.3 - Stump heights (4/07)

Stump heights within Payment Unit 8 shall not exceed 6 inches for all trees. This is in order to facilitate planting operations.

3 - Payments

3.3 - Pre-measured Sales

3.3.4 - Dividing payment units (7/14)

Payment Unit(s) greater than \$25,000 may be divided at the request of the Purchaser and upon approval of the Unit Manager. Dividing Payment Units is a contract modification which requires a Timber Sale Contract Supplement. There will be only one division per Payment Unit.

3.4 - Damaged Timber

3.4.1 - Damaged timber (6/14)

General Condition and Requirement 3.4 Damaged Timber, defines liquidated damages for undesignated live merchantable trees which are cut or injured. No damage is acceptable to merchantable trees. Within the sale area, if more than 5% of trees (> 4.5" DBH) within a specified area of the sale are damaged, liquidated damages will be assessed for all trees damaged. Rates will be in accordance with General Condition and Requirement 3.4 Damaged Timber.

4 - Transportation

4.1 - Construction

4.1.3 - Slash and earthen piles (8/04)

Piles or windrows of earth along roads and landings that have been widened or constructed shall be leveled. Slash from road maintenance or construction, including stumps, shall be dispersed throughout the sale.

4.1.6 - Road construction (1/09)

Construction or improvements of existing roads shall be done in such a way as to minimize the environmental and visual impacts. Merchantable trees shall be cut and utilized unless otherwise directed. Non-merchantable trees shall be severed and laid flat on the ground. Slash shall be scattered, and not left in windrows and kept a minimum of 10 feet back from the road edge. Stumps shall be set upright, not left on edge, and be moved at least 10 feet away from the road edge. Disturbed soil shall be feathered into the woods and not left in berms or windrows.

4.1.7 - Road closure (10/11)

All new roads built into the sale must be blocked to vehicle traffic upon completion of the sale. Overgrown roads that are reopened shall be considered new roads. In general, this will require constructing a four (4') foot high berm of stumps and logs covered with earth. These roads must be rendered impassable to cars and trucks. Contact the sale administrator for specific details of design and placement.

4.2 - Maintenance

4.2.5 - Two wheel drive condition (2/04)

All existing trail roads on and adjacent to the sale area must be passable by two-wheel drive traffic for the duration of the sale.

5 - Operations

5.1 - Notification

5.1.1 - Pre-sale conference (10/16)

A pre-sale conference between the Purchaser and sale administrator is required prior to beginning any operations to determine landing and road locations. The Unit Manager or his/her representative must be contacted at least 10 days in advance to schedule the conference.

5.1.3 - Well heads and natural gas pipelines (11/15)

The Purchaser is responsible for contacting the Dominion Midwest Energy, Inc., Wolverine Inc., and Trendwell Energy Inc. oil and gas companies 30 days prior to operating equipment in the vicinity of well heads or natural gas pipelines.

5.1.4 - Post-sale conference (10/16)

A post-sale conference on site between the Purchaser and sale administrator is required 5 days prior to the completion of active logging operations to determine clean-up and repair of landings, road edges, and the fulfillment of other contract specifications.

5.2 - Conduct of Operations

5.2.2 - Hazard Trees/Snags

5.2.2.1 - Den trees (10/16)

Obvious hollow and/or den trees shall be protected and left standing unless they are a safety hazard.

5.2.3 - Operating Restrictions

5.2.3.1 - Operating restrictions (9/11)

Within Payment Unit(s) 5, 6, and 8, cutting, skidding, and hauling are limited to the period of July 15 to April 15. This restriction is to minimize concerns for soil erosion on slopes.

5.2.3.5 - Oak wilt restriction (1/18)

Within Payment Unit(s) 1-8, unless changed by written agreement, cutting, skidding, hauling within the sale and brushing of access roads to the sale are not permitted during the period of April 15 to July 15. Operations may be allowed if specific steps are taken to prevent damaging uncut oak during the high risk period. Those steps may include completing all road brushing before April 15th and clearing a tree-length buffer along uncut oak cover before April 15th. This is necessary to reduce the spread of oak wilt. For more information, contact the Unit Manager or his/her representative.

5.2.3.11 - Coppice regeneration protection (4/10)

Timber harvesting operations in Payment Units 1-8 must be completed within 30 days of cutting/severing stem(s) to minimize damage to the new regeneration.

5.2.4 - Dead and Down Creation

5.2.4.4 - Dead and down creation, grouse (6/18)

To encourage grouse and other wildlife, in Payment Unit(s) 1-7, leave one, 12" or larger diameter (or largest diameter trees within stand) whole tree on the ground for every 2 acres, preferably a hardwood species such as oak or maple. These will be evenly scattered throughout the unit.

5.2.31 - Landing locations (9/13)

Landing areas are marked on the Timber Sale Map with the letter "L". Landings must be confined to these designated sites unless otherwise authorized by the Unit Manager or his/her representative.

5.2.32 - Decking/landing restoration (9/13)

All decking and landing areas must have the surface area restored to a condition equal to or better than before. This is to ensure the proper regeneration of the stand. Wood debris, chips and "cookies" from trimmings must be removed or scattered away from landing and loading areas and may not be windrowed on the edge.

5.2.38 - No decking against live trees (2/04)

Cut products may not be decked against unmarked or designated leave trees.

5.2.40 - Pathway protection (10/10)

The Big Oaks equestrian trail is shown on the Timber Sale Map. Do not cut trees or damage posts with pathway markers. Maintain a 20-foot wide slash, debris, and rut free zone daily, using the pathway as the centerline. Do not run equipment down the pathway. Skidding across the trail may only occur in locations approved by the sale administrator.

5.2.41 - Snowmobile trail protection (9/11)

Snowmobile trail 9 is shown on the Timber Sale Map. Do not cut or damage posts with orange trail markers or traffic control signs. If the trail is used, it must be maintained and restored to a condition equal to or better than before the sale. The road maintenance/restoration must be done prior to December 1. If the trail road is to be used for hauling during the snowmobile season, then a snow covered base must be left on the trail. The snowmobile trail may only be crossed at right angles. Maintain a 20 foot wide slash, debris, and rut free zone daily using the snowmobile trail as the centerline. No decking of forest products will be permitted within 50 feet of the snowmobile trail during the snowmobile season.

5.4 - Soil Protection

5.4.1 - Rutting restriction, general (7/16)

Operations are to cease immediately if equipment and weather conditions result in rutting of roads and/or skid trails which is 12 inches or greater in depth and 50 feet in length. The Unit Manager or his/her representative may restrict hauling and/or skidding if ruts exceed the specified depth. With the Unit Manager or his/her representative's approval, the Purchaser may return to the area when the risk of rutting has decreased.

5.4.2 - Skid trails (2/04)

Skid trails up and down slopes should be avoided. If however this is unavoidable, these trails will be left in a non-erodible condition using water bars, logs, and slash. Placing of slash on these skid trails while logging is ongoing may alleviate need for any further action. At the direction of the sale administrator, seed, fertilizer, and mulch may also be required.

5.8 - Protection of Endangered Species

5.8.5 - Protection of raptor nests (3/13)

All trees with raptor nests will be protected if found during harvesting operations. Notification will be made to the Unit Manager or his/her representative who will notify the Wildlife Biologist so an on-site evaluation and recommendation can be made, if necessary.

6 - Safety and Fire Prevention

6.2 - Signing

6.2.3 - Recreational trail posting (2/10)

The Purchaser is responsible for posting and maintaining caution signs on all recreational trails prior to beginning operations. The trail must be posted at appropriate distances from the sale area to warn of logging activity and truck traffic at both ends of the trail. Signs must be removed when harvest operations are suspended or completed. The Purchaser will provide these signs.



TIMBER SALE MAP

This information provided by authority of Part 525, 1994 PA 451, as amended.

Forest Management Unit Atlanta Management Unit		County Montmorency	Mapped By D. Coy	Date 08/28/2018	Page 1	of 2
Township 29N & 30N	Range 02E	Section(s) and Subdivision(s) N2NE,SWNE,N2SW,SESW 11-SW4 14-N2NW,SENW,NWNE,S2NE,NESW,NWSE	Cruised By D. Coy & Natzke	Scale 1:15,840		

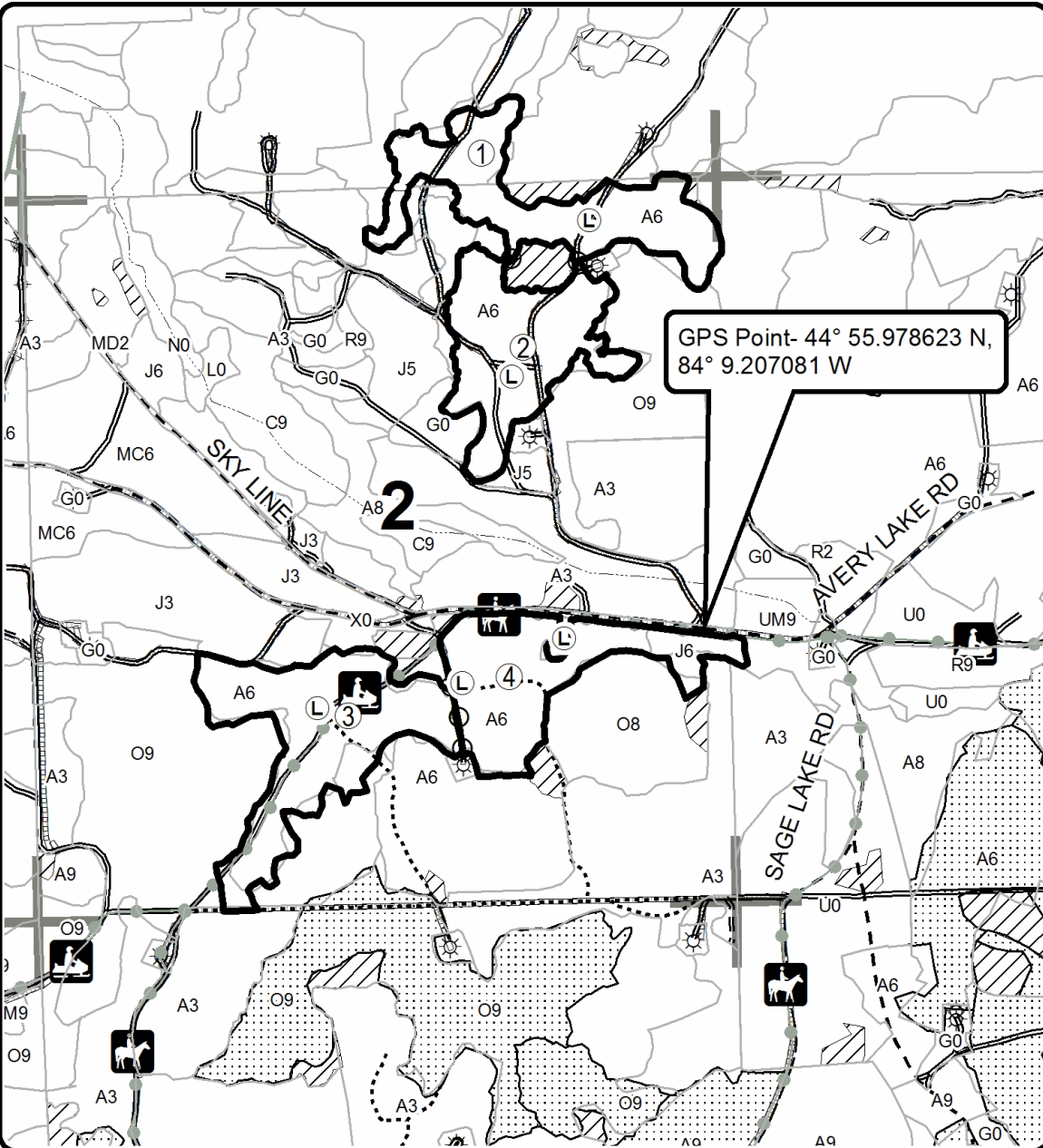
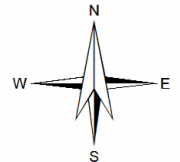
Cover Type				Density	
A = Aspen	H = Hemlock	N = Marsh	U = Upland Brush	0 = Non Stocked	5 = Pole Timber Medium
B = Paper Birch	J = Jack Pine	O = Oak	UM = Upland Mixed	1 = Seedling Sapling Poor	6 = Pole Timber Well
C = Cedar	L = Lowland Brush	P = Lowland Poplar	V = Bog or Marsh	2 = Seedling Sapling Medium	7 = Saw Timber Poor
D = Tread Bog	LM = Lowland Mixed	Q = Mixed Swamp Conifer	W = White Pine	3 = Seedling Sapling Well	8 = Saw Timber Medium
E = Swamp Hdwoods	M = Mpl, Bch, Brch	R = Red Pine	X = Non Stocked	4 = Pole Timber Poor	9 = Saw Timber Well
F = Spruce Fir	MC = Mixed Conifer	S = Black Spruce	Z = Water		
G = Grass	MD = Mixed Deciduous	T = Tamarack			

PU Acres	PU Acres
1 30.7	5 37.5
2 28.8	6 41.0
3 37.7	7 34.9
4 28.4	8 34.8

County Dog Mix

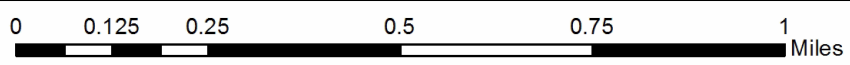
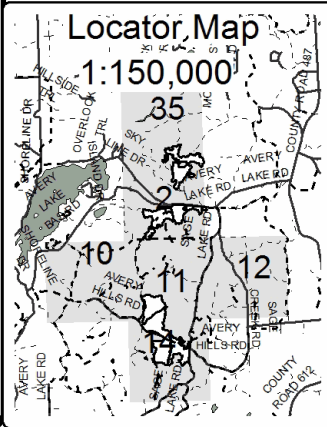
Compartments 5 & 24

273.8 Acres



Legend

- Against State (Red)
- Payment Unit (Green)
- Retention Area (Red)
- Stand Boundaries
- Nearby Timber Sales
- Recreational Trail
- Secondary Forest Road
- Forest Access Route
- Gravel Road
- County Road - Seasonal
- Private Road
- Temporary Management Access
- Pipeline
- Powerline
- Stream
- Natural Gas
- Landing
- Payment Unit
- Section Corners





TIMBER SALE MAP

This information provided by authority of Part 525, 1994 PA 451, as amended.

Forest Management Unit Atlanta Management Unit		County Montmorency	Mapped By D. Coy	Date 08/28/2018	Page 2	of 2
Township 29N & 30N	Range 02E	Section(s) and Subdivision(s) N2NE,SWNE,N2SW,SESW 11-SW4 14-N2NW,SENW,NWNE,S2NE,NESW,NWSE	Cruised By D. Coy & Natzke	Scale 1:15,840		

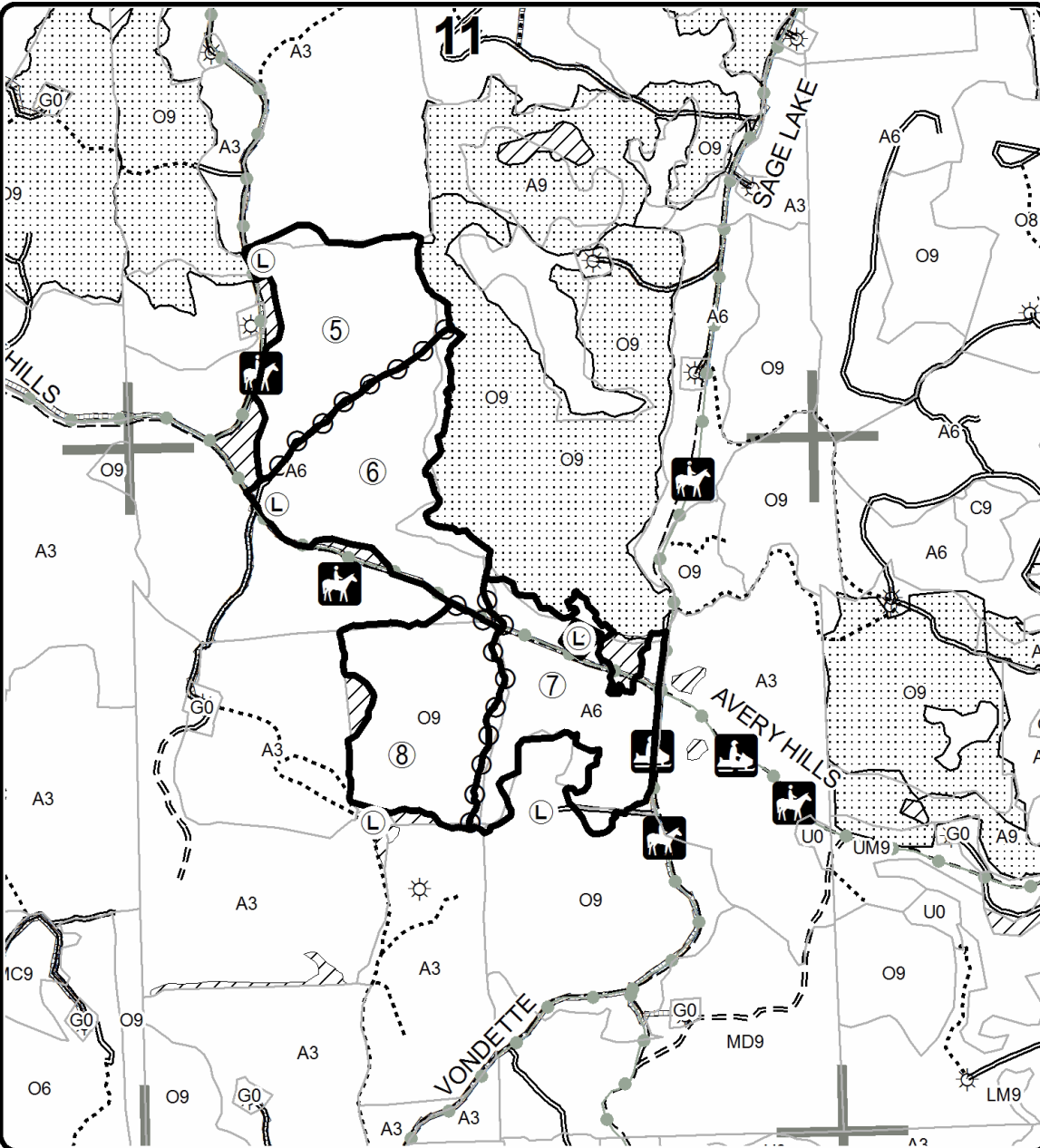
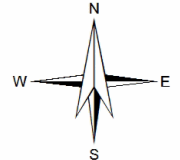
Cover Type				Density	
A = Aspen	H = Hemlock	N = Marsh	U = Upland Brush	0 = Non Stocked	5 = Pole Timber Medium
B = Paper Birch	J = Jack Pine	O = Oak	UM = Upland Mixed	1 = Seedling Sapling Poor	6 = Pole Timber Well
C = Cedar	L = Lowland Brush	P = Lowland Poplar	V = Bog or Marsh	2 = Seedling Sapling Medium	7 = Saw Timber Poor
D = Tread Bog	LM = Lowland Mixed	Q = Mixed Swamp Conifer	W = White Pine	3 = Seedling Sapling Well	8 = Saw Timber Medium
E = Swamp Hdwoods	M = Mpl, Bch, Brch	R = Red Pine	X = Non Stocked	4 = Pole Timber Poor	9 = Saw Timber Well
F = Spruce Fir	MC = Mixed Conifer	S = Black Spruce	Z = Water		
G = Grass	MD = Mixed Deciduous	T = Tamarack			

PU Acres	PU Acres
1 30.7	5 37.5
2 28.8	6 41.0
3 37.7	7 34.9
4 28.4	8 34.8

County Dog Mix

Compartments 5 & 24

273.8 Acres



Legend

- Against State (Red)
- Payment Unit (Green)
- Retention Area (Red)
- Stand Boundaries
- Nearby Timber Sales
- Recreational Trail
- Secondary Forest Road
- Forest Access Route
- Gravel Road
- County Road - Seasonal
- Temporary Management Access
- Pipeline
- Natural Gas
- Landing
- Payment Unit
- Section Corners

