



**DEPARTMENT OF NATURAL RESOURCES
STATE OF MICHIGAN
TIMBER SALE PROSPECTUS #7213**

SCHEDULED SALE DATE AND TIME: 2:00 p.m. (local time) on March 22, 2023.

LOCATION: SHINGLETON MGMT UNIT, PO BOX 67, M 28 WEST, SHINGLETON, MI 49884.

CONTACT NAME: Robert Burnham

PHONE NUMBER: (906) 420-1645

PROSPECTUS NOTE: The bidder is advised to inspect the sale area and review the location, estimated volumes, operating costs and contract terms of proposed sales. Please be aware that some landowners may request 60 days or more notice for access across their land.

Notice is hereby given that bids will be received by the Unit Manager, SHINGLETON MANAGEMENT UNIT, for certain timber on the following described lands:

Sunken Lake Pine (41-002-22) / T47N, R14W, SEC. 16, E1/2NE.

T47N, R14W, SEC. 21, S1/2NW, S1/2NE, NWSW, S1/2SW, SE.

T47N, R14W, SEC. 28, NW, SWNE, N1/2SW, SESW.

T47N, R14W, SEC. 33, E1/2NW.

Schoolcraft County, Advertised Price \$142,215.55, 391.5 Acres, Red Pine, White Pine.

SALE NOTE: Road work is required. See Sale Spec. 4.1.8.

Permission for access across private land to access Payment Units 1 - 3 is the responsibility of the Purchaser.

The Sunken Lake Road is a snowmobile trail and is shown on the Timber Sale Map. See Sale Spec. 5.2.41 for restrictions.

A recreation site such as a trail, pathway, or campground is within the sale area or the vicinity. Certain restrictions/specifications may be applicable including time restrictions. Access may be through private land.

TIMBER SALE INFORMATION

Sunken Lake Pine (41-002-22)

T47N, R14W, SEC. 16; T47N, R14W, SEC. 21; T47N, R14W, SEC. 28; T47N, R14W, SEC. 33.
Schoolcraft County (Advertised Price \$142,215.55)

SALE NOTE: Road work is required. See Sale Spec. 4.1.8.

Permission for access across private land to access Payment Units 1 - 3 is the responsibility of the Purchaser.

The Sunken Lake Road is a snowmobile trail and is shown on the Timber Sale Map. See Sale Spec. 5.2.41 for restrictions.

A recreation site such as a trail, pathway, or campground is within the sale area or the vicinity. Certain restrictions/specifications may be applicable including time restrictions. Access may be through private land.

A timber sale contract for this lump sum, sealed bid timber sale will be awarded to the responsible bidder offering the highest sealed bid price. All units of volume listed below were estimated using the Inventory Manager computer program and the new Michigan taper model. Bids must be at or above the following advertised price for each product and species:

<u>PRODUCTS & SPECIES</u>	<u>ESTIMATED UNITS*</u>	<u>ADVERTISED PRICE</u>
Sawtimber		
Black Cherry	14.0 MBF	\$ 108.00 / MBF
Red Maple	51.2 MBF	\$ 106.00 / MBF
Sugar Maple	22.0 MBF	\$ 344.00 / MBF
Pulpwood		
Balsam Fir	83 Cords	\$ 10.45 / Cord
Black Spruce	140 Cords	\$ 18.10 / Cord
Jack Pine	276 Cords	\$ 26.35 / Cord
Mixed Hardwood	529 Cords	\$ 14.90 / Cord
Paper Birch	7 Cords	\$ 16.80 / Cord
Quaking Aspen	50 Cords	\$ 24.25 / Cord
Red Pine	1,187 Cords	\$ 63.95 / Cord
White Pine	1,519 Cords	\$ 20.95 / Cord
White Spruce	5 Cords	\$ 18.10 / Cord

* The total volume is statistically estimated within plus (+) or minus (-) 11.02 percent. There are an estimated 3,943 cords on this timber sale, plus or minus 435 cords at the 95% confidence level. The estimated units are final and not subject to adjustment. Prospective bidders are urged to examine this timber and to make their own estimates of quantity and quality.

BOND AND PAYMENT SCHEDULE:

1. A bond in the amount of \$7,110.78 to insure faithful performance of the conditions of the contract will be deposited by the successful bidder within 21 days of the sale award.
2. Cutting in any sale or unit without the required advance payment would be considered a trespass.
3. Total payment must be paid in advance or according to the following schedule:
 - (a) Ten percent (10%) of the sale value must be paid within 21 days of the sale award.
 - (b) The 10% down payment will be credited towards the first unit cut.
 - (c) Payment for each of the following units must be made before cutting begins in that unit:

<u>PAYMENT UNIT NUMBER</u>	<u>PERCENT OF TOTAL SALE VALUE</u>
01	3.9%
02	5.4%
03	7.1%
04	22.3%
05	17.0%
06	3.8%
07	2.0%
08	3.8%
09	6.2%
10	4.4%
11	2.8%
12	7.2%
13	7.0%
14	5.1%
15	2.0%

4. If no cutting takes place, the 10% down payment will not be refunded.
5. Operations on the contract issued will terminate on 06/30/2026.

SALE STATISTICS

Volumes were calculated in cubic feet using the Michigan taper model. Cubic foot volume includes all wood inside bark for the product indicated. For display purposes, cubic feet were converted to cords and MBF using a simple conversion factor, e.g. 79 cubic feet per cord and 185 cubic feet per MBF. The cubic foot volumes are precise; the cords and MBF volumes are not. Cubic foot volume cannot be directly converted to cords or boards with precision.

SALE VOLUMES

The total estimated sale volume may not equal the sum of the species/products due to the nature of statistical calculations associated with double sampling methodology.

VOLUME			STATISTICAL RANGE IN CORDS	
TOTAL CUBIC FEET	TOTAL CORDS	PERCENT ERROR	MINIMUM	MAXIMUM
311,478	3,943	11.02%	3,508	4,377

VDU VOLUMES

A VDU is a Volume Determination Unit. Volumes and their associated statistics are calculated at the VDU level and summarized to the sale level. There is often a one to one relationship between a VDU and a Payment Unit, but not always, depending on the cruise design. Refer to the VDU TO PAYMENT UNIT table.

	VOLUME			RANGE IN CORDS	
VDU	TOTAL CUBIC FEET	TOTAL CORDS	PERCENT ERROR	MINIMUM	MAXIMUM
1	109,689	1,388	15.88%	1,168	1,609
2	132,749	1,680	15.30%	1,423	1,938
3	69,039	874	13.57%	755	992
TOTAL:	311,478	3,943		3,347	4,539

VDU TO PAYMENT UNIT

When a VDU is associated with more than one Payment Unit (PU), the VDU volumes are assigned to the PU based on acres of the VDU within the PU.

VDU	VDU ACRES	PU	PU ACRES
1	223.9	6	19.0
		7	10.2
		8	19.3
		9	31.5
		10	22.0
		11	14.3
		12	36.5
		13	35.0
		14	25.9
		15	10.2
		4	49.4
		5	38.1
		1	19.0
		2	26.5
		3	34.6
2	87.5		
3	80.1		
TOTAL:	391.5		391.5

DESCRIPTION OF TIMBER BY PU (PU)

PU	MARKET GROUP	PRODUCT	QUANTITY	UNIT	ACRES	ADVERTISE PRICE
1	Black Cherry	Sawtimber	3.3	MBF	19.0	\$5,532.95
	Red Maple		11.5	MBF		
	Sugar Maple		5.2	MBF		
	Balsam Fir	Pulpwood	19	Cords		
	Black Spruce		29	Cords		
	Mixed Hardwood		97	Cords		
	<i>Beech</i>		1	<i>Cords</i>		
	<i>Black Cherry</i>		9	<i>Cords</i>		
	<i>Red Maple</i>		64	<i>Cords</i>		
	<i>Sugar Maple</i>		23	<i>Cords</i>		
2	Black Cherry	Sawtimber	4.6	MBF	26.5	\$7,714.40
	Red Maple		16.0	MBF		
	Sugar Maple		7.3	MBF		
	Balsam Fir	Pulpwood	26	Cords		
	Black Spruce		41	Cords		
	Mixed Hardwood		134	Cords		
	<i>Beech</i>		1	<i>Cords</i>		
	<i>Black Cherry</i>		12	<i>Cords</i>		
	<i>Red Maple</i>		89	<i>Cords</i>		
	<i>Sugar Maple</i>		32	<i>Cords</i>		
3	Black Cherry	Sawtimber	6.1	MBF	34.6	\$10,115.30
	Red Maple		21.1	MBF		
	Sugar Maple		9.5	MBF		
	Balsam Fir	Pulpwood	34	Cords		
	Black Spruce		53	Cords		
	Mixed Hardwood		177	Cords		
	<i>Beech</i>		1	<i>Cords</i>		
	<i>Black Cherry</i>		17	<i>Cords</i>		
	<i>Red Maple</i>		117	<i>Cords</i>		
	<i>Sugar Maple</i>		42	<i>Cords</i>		
4	Jack Pine	Pulpwood	2	Cords	49.4	\$31,507.65
	Mixed Hardwood		17	Cords		
	<i>Black Cherry</i>		3	<i>Cords</i>		
	<i>Red Maple</i>		14	<i>Cords</i>		
	Paper Birch		4	Cords		
	Quaking Aspen		23	Cords		
	Red Pine		246	Cords		
	White Pine		706	Cords		
	White Spruce		3	Cords		
5	Jack Pine	Pulpwood	1	Cords	38.1	\$24,245.25
	Mixed Hardwood		13	Cords		
	<i>Black Cherry</i>		3	<i>Cords</i>		
	<i>Red Maple</i>		10	<i>Cords</i>		
	Paper Birch		3	Cords		
	Quaking Aspen		17	Cords		
	Red Pine		190	Cords		
	White Pine		543	Cords		
	White Spruce		2	Cords		
6	Red Maple	Sawtimber	0.2	MBF	19.0	\$5,348.55
	Black Spruce	Pulpwood	1	Cords		
	Jack Pine		23	Cords		
	Mixed Hardwood		7	Cords		
	<i>Red Maple</i>		7	<i>Cords</i>		
	Quaking Aspen		1	Cords		
	Red Pine		64	Cords		

DESCRIPTION OF TIMBER BY PU (PU), CON'T

PU	MARKET GROUP	PRODUCT	QUANTITY	UNIT	ACRES	ADVERTISE PRICE
6 con't	White Pine	Pulpwood	23	Cords		
7	Red Maple	Sawtimber	0.1	MBF	10.2	\$2,830.20
	Black Spruce	Pulpwood	1	Cords		
	Jack Pine		12	Cords		
	Mixed Hardwood		4	Cords		
	<i>Red Maple</i>		4	<i>Cords</i>		
	Red Pine		34	Cords		
	White Pine		12	Cords		
8	Red Maple	Sawtimber	0.2	MBF	19.3	\$5,453.75
	Black Spruce	Pulpwood	1	Cords		
	Jack Pine		24	Cords		
	Mixed Hardwood		8	Cords		
	<i>Red Maple</i>		8	<i>Cords</i>		
	Quaking Aspen		1	Cords		
	Red Pine		65	Cords		
	White Pine		23	Cords		
9	Red Maple	Sawtimber	0.4	MBF	31.5	\$8,883.10
	Balsam Fir	Pulpwood	1	Cords		
	Black Spruce		2	Cords		
	Jack Pine		38	Cords		
	Mixed Hardwood		13	Cords		
	<i>Black Cherry</i>		1	<i>Cords</i>		
	<i>Red Maple</i>		12	<i>Cords</i>		
	Quaking Aspen		1	Cords		
	Red Pine		106	Cords		
	White Pine		38	Cords		
10	Red Maple	Sawtimber	0.3	MBF	22.0	\$6,235.75
	Black Spruce	Pulpwood	2	Cords		
	Jack Pine		27	Cords		
	Mixed Hardwood		9	Cords		
	<i>Red Maple</i>		9	<i>Cords</i>		
	Quaking Aspen		1	Cords		
	Red Pine		74	Cords		
	White Pine		27	Cords		
11	Red Maple	Sawtimber	0.2	MBF	14.3	\$4,026.65
	Black Spruce	Pulpwood	1	Cords		
	Jack Pine		17	Cords		
	Mixed Hardwood		6	Cords		
	<i>Red Maple</i>		6	<i>Cords</i>		
	Quaking Aspen		1	Cords		
	Red Pine		48	Cords		
	White Pine		17	Cords		
12	Red Maple	Sawtimber	0.4	MBF	36.5	\$10,288.60
	Balsam Fir	Pulpwood	1	Cords		
	Black Spruce		3	Cords		
	Jack Pine		45	Cords		
	Mixed Hardwood		15	Cords		
	<i>Black Cherry</i>		1	<i>Cords</i>		
	<i>Red Maple</i>		14	<i>Cords</i>		
	Quaking Aspen		2	Cords		
	Red Pine		122	Cords		
	White Pine		44	Cords		
13	Red Maple	Sawtimber	0.4	MBF	35.0	\$9,895.20
	Balsam Fir	Pulpwood	1	Cords		
	Black Spruce		3	Cords		

DESCRIPTION OF TIMBER BY PU (PU), CON'T

PU	MARKET GROUP	PRODUCT	QUANTITY	UNIT	ACRES	ADVERTISE PRICE
13 con't	Jack Pine	Pulpwood	43	Cords		
	Mixed Hardwood		15	Cords		
	Black Cherry		1	Cords		
	Red Maple		14	Cords		
	Quaking Aspen		2	Cords		
	Red Pine		117	Cords		
	White Pine		43	Cords		
14	Red Maple	Sawtimber	0.3	MBF	25.9	\$7,308.00
	Balsam Fir	Pulpwood	1	Cords		
	Black Spruce		2	Cords		
	Jack Pine		32	Cords		
	Mixed Hardwood		10	Cords		
	Red Maple		10	Cords		
	Quaking Aspen		1	Cords		
	Red Pine		87	Cords		
	White Pine		31	Cords		
15	Red Maple	Sawtimber	0.1	MBF	10.2	\$2,830.20
	Black Spruce	Pulpwood	1	Cords		
	Jack Pine		12	Cords		
	Mixed Hardwood		4	Cords		
	Red Maple		4	Cords		
	Red Pine		34	Cords		
	White Pine		12	Cords		
TOTAL:			87.2	MBF		
TOTAL:			3,796	Cords		

Sale Specific Conditions & Requirements

Sale Name: Sunken Lake Pine

Sale Number: 41-002-22 Seq#: 1

1 - Sale Area

1.2 - Boundaries

1.2.1 - Painted boundaries (9/19)

Exterior sale boundary lines against private property are marked with blue paint. Exterior sale boundary lines against state are marked with red paint. Interior Payment Unit boundaries are marked with yellow paint. Retention patches are marked with red paint; no harvesting activities may occur within these areas. The painted boundary line trees are not Included Timber and are to be protected unless marked with orange paint.

2 - Timber Specifications

2.1 - Included Timber

2.1.3 - Cut tree marked unit(s) (12/08)

Within Payment Unit(s) 1 - 3 and 6, all trees are designated for cutting when marked with orange paint above and below stump height, regardless of merchantability. In addition, within Payment Units 1 - 3, cut all spruce and fir.

2.1.4 - Designated timber unit(s) (6/17)

Within Payment Unit(s) 7 - 15, all trees are designated for cutting, except do not cut red pine and oak. In addition, red pine marked with orange paint are designated for cutting.

2.1.7 - Leave tree marked unit(s) (6/14)

Within Payment Unit(s) 4 and 5, all trees which meet minimum piece specifications in 2.2 Utilization are designated for cutting, except do not cut white pine less than 8 inches at DBH, or any trees marked with green paint above and below stump height.

2.2 - Utilization

2.2.3 - Stump heights (4/07)

Stump heights within Unit(s) 6 - 15 shall not exceed 12 inches for trees greater than 10 inches DBH and 4 inches for trees smaller than 10 inches DBH.

3 - Payments

3.3 - Pre-measured Sales

3.3.4 - Dividing payment units (7/14)

Payment Unit(s) with a value over \$20,000 may be divided at the request of the Purchaser and upon approval of the Unit Manager. Dividing Payment Units is a contract modification which requires a Timber Sale Contract Amendment.

3.4 - Damaged Timber

3.4.1 - Damaged timber (7/16)

General Condition and Requirement 3.4 Damaged Timber, defines liquidated damages for undesignated live merchantable trees which are cut or injured. In addition, extreme care should be taken to avoid damage to tree seedlings and saplings.

Within the sale area, if more than 25% of the tree seedlings or saplings (1/4" to 4.5" DBH) within a specified portion of the sale area are damaged, liquidated damages will be assessed at \$1000 per acre for all acreage within that specified portion of the sale area that was damaged.

4 - Transportation

4.1 - Construction

4.1.3 - Slash and earthen piles (8/04)

Piles or windrows of earth along roads and landings that have been widened or constructed shall be leveled. Slash from road

maintenance or construction, including stumps, shall be dispersed throughout the sale.

4.1.4 - Timber removed for construction (12/09)

Trees cut or damaged in the process of pre-approved road, landing or skid trail construction will be decked in an area separate from other Designated Timber and not removed until measured by the sale administrator. Payment will be made at the specified Purchase Unit Price.

4.1.6 - Road construction (1/09)

Construction of new roads or improvements of existing roads shall be done in such a way as to minimize the environmental and visual impacts. Merchantable trees shall be cut and utilized unless otherwise directed. Non-merchantable trees shall be severed and laid flat on the ground. Slash shall be scattered, and not left in windrows and kept a minimum of 10 feet back from the road edge. Stumps shall be set upright, not left on edge, and be moved at least 10 feet away from the road edge. Disturbed soil shall be feathered into the woods and not left in berms or windrows.

4.1.7 - Road closure (10/11)

All new roads built into the sale must be blocked to vehicle traffic upon completion of the sale. Overgrown roads that are reopened shall be considered new roads. In general, this will require constructing a four (4') foot high berm of stumps and logs covered with earth. Stumps and brush must be placed along the remainder of the trail. These roads must be rendered impassable to cars and trucks. All stumps from road building and landing construction must be reserved to block any newly constructed roads upon completion of the sale. These stumps must be scattered along the road system to prohibit vehicular movement. Contact the sale administrator for specific details of design and placement.

4.1.8 - Road work (1) (8/07)

The following road work is required: 500 cubic yards of breaker run gravel (3" minus) must be purchased, hauled and spread on the Sunken Lake Road between M-77 and the Sale area. All work is at the Purchaser's expense. Exact locations will be determined at the Pre-Sale meeting and all work must be complete before hauling begins.

4.2 - Maintenance

4.2.4 - Grading (10/16)

For completion of the sale, state forest roads must be graded. In general, this will require a road grader or bull dozer to shape up the roads after forest products have been hauled off site. This includes cleaning of drainage areas, grading, crowning and filling with gravel, if necessary. The grading equipment to be used must be approved by the Unit Manager or his/her representative.

4.4 - Access

4.4.1 - Private property access (3/11)

Permission for access across private land to access Payment Units 1 - 3 is the responsibility of the Purchaser.

5 - Operations

5.2 - Conduct of Operations

5.2.2 - Hazard Trees/Snags

5.2.2.1 - Den trees (10/16)

Obvious hollow and/or den trees shall be protected and left standing unless they are a safety hazard.

5.2.3 - Operating Restrictions

5.2.3.6 - Bark beetle restriction (12/08)

In the event drought creates a high risk of pine bark beetle infestation, pine is not to be cut during the period March 1 through July 1, unless all portions of trees greater than two inches in diameter are removed from the sale area, reduced to chips, or treated to the satisfaction of the Unit Manager or his/her representative, within fifteen days of being severed from the stump. Pine log decks, pulpwood piles and treetops that are piled for chipping in the fall or winter within a 1/4 mile of susceptible sites must be removed before March 15. Residual slash must not be placed in piles or rows and must be spread over the site for quick drying. The Department of Natural Resources will exercise this specification if the risk of damage warrants.

5.2.32 - Decking/landing restoration (9/13)

All decking and landing areas must have the surface area restored to a condition equal to or better than before. This is to ensure the proper regeneration of the stand. Wood debris, chips and "cookies" from trimmings must be removed or scattered away from landing and loading areas and may not be windrowed on the edge.

5.2.38 - No decking against live trees (2/04)

Cut products may not be decked against unmarked or designated leave trees.

5.2.41 - Snowmobile trail protection (9/11)

The Sunken Lake Road is a snowmobile trail and is shown on the Timber Sale Map. Do not cut or damage posts with orange trail markers or traffic control signs. It must be maintained and restored to a condition equal to or better than before the sale. If the trail is used for hauling, it must be graded to the satisfaction of the Unit Manager or his/her representative prior to December 1st. If the trail is used during the snowmobile season a snow covered base must be left on the trail. No decking of forest products will be permitted along the snowmobile trail. All stumps within 20 feet of the snowmobile trail must be cut at ground level.

5.8 - Protection of Endangered Species

5.8.3 - Red shoulder hawk or goshawk (2/16)

In the event that an active red shoulder hawk or goshawk nest is found, the contract may be amended to protect the nest site until the nest is determined to be inactive. The value of the trees in this excluded area will be refunded or credited to the Purchaser. The nest will be buffered with a five-chain radius (eight acre) protection area, centered on the nest tree, in which there will be no cutting or new roads constructed. Avoid human disturbance, including loading and skidding, in the protection area.

An additional zone of five chains (ten chains centered on the active nest tree) will be established in which there is no management activity from April 1 to July 30. Limit biomass harvesting and chipping operations within this ten-chain zone, retain the maximum one-third of residues per the Woody Biomass Harvesting Guidelines (Michigan DNR 2010). Nests determined to be inactive will be protected with a one-chain no-harvest buffer.

6 - Safety and Fire Prevention

6.2 - Signing

6.2.1 - Road posting (10/20)

The Purchaser is responsible for posting and maintaining caution signs on Sunken Lake Road prior to beginning operations. The road must be posted at appropriate distances from the sale area to warn of logging activity and truck traffic. Signs must be removed when harvest operations are suspended or completed. The Purchaser will provide these signs.

6.2.2 - Snowmobile trail posting (10/20)

The Purchaser is responsible for posting and maintaining caution signs on the Sunken Lake Road prior to beginning operations during the snowmobile season (approximately December 1 to March 31). The trail must be posted at appropriate distances from the sale area to warn of logging activity and truck traffic. Signs must be removed when harvest operations are suspended or completed. The Purchaser will provide these signs.



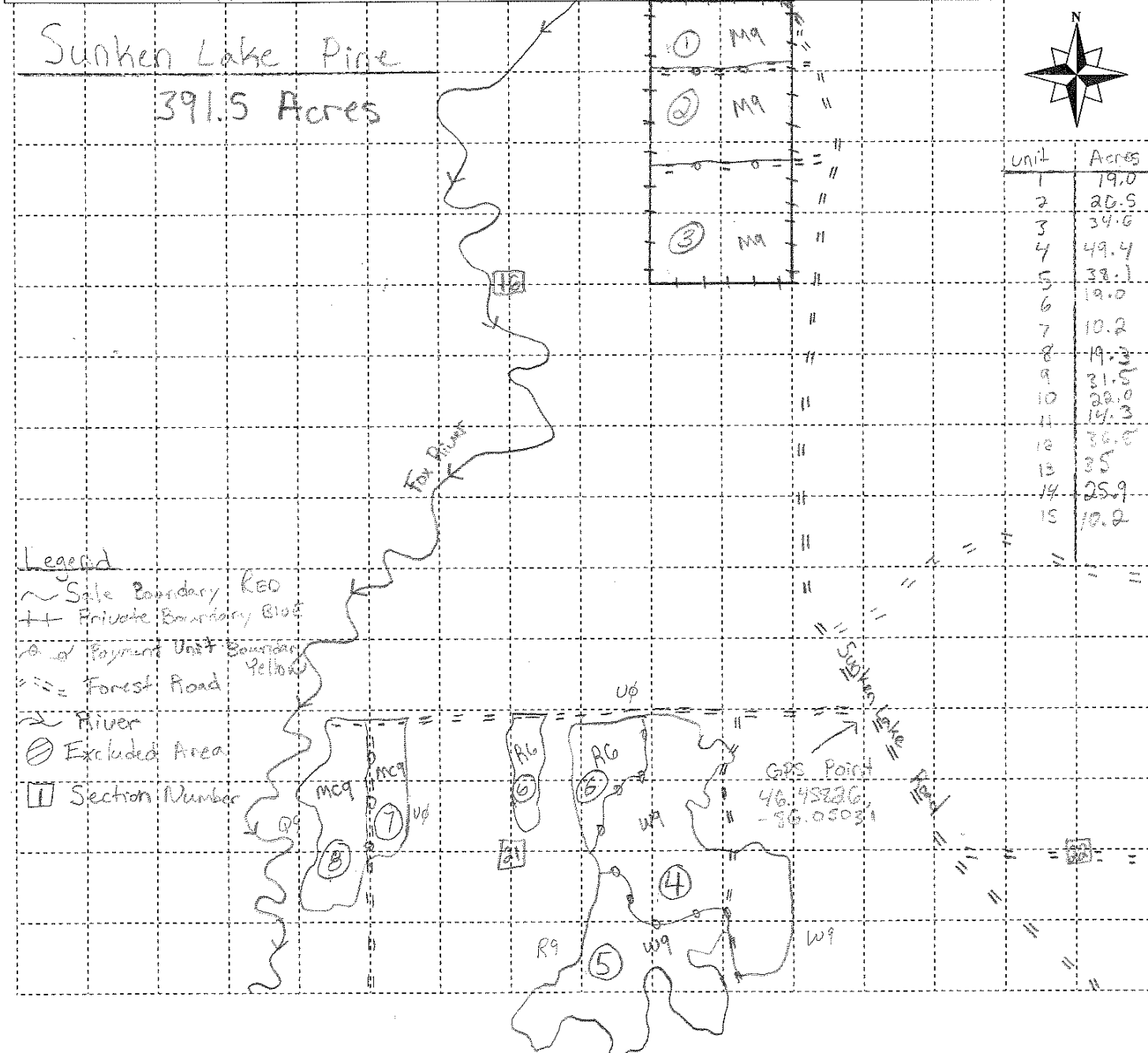
TIMBER SALE MAP

This information provided by authority of Part 5, 1994 PA 451, as amended.

Sale Number	Year
41-002-22	2022

Forest Management Unit Shingleton	County Schoolcraft	Mapped By Kyle Gould	Date 8/29/2022	Page 1	of 2
Compartment Number 41128	Township 47N	Range 14W	Section(s) and Subdivision(s) 16 E1/2NE 21 - S1/2NW, S1/2NE, NWSW, S1/2SW, SE 28 - NW, SWNE, N1/2SW, SE, SW 33 - E1/2NW	Scale: = 1 mile	

Cover Type				Density	
A = Aspen	J = Jack Pine	O = Oak	U = Upland Brush	0 = Non Stocked	5 = Pole Timber Medium
B = Paper Birch	K = Rock	P = Lowland Poplar	UM = Upland Mix Forest	1 = Seedling Sapling Poor	6 = Pole Timber Well
C = Cedar	L = Lowland Brush	Q = Mixed Swamp Conifer	V = Bog or Marsh	2 = Seedling Sapling Medium	7 = Saw Timber Poor
D = Treed Bog	LM = Lowland Mix Forest	R = Red Pine	W = White Pine	3 = Seedling Sapling Well	8 = Saw Timber Medium
E = Swamp Hardwoods	M = Maple, Beech, Birch	S = Black Spruce	X = Non Stocked	4 = Pole Timber Poor	9 = Saw Timber Well
F = Spruce/Fir	MC = Mixed Conifer	T = Tamarack	Y = Sand		
G = Grass	MD = Mixed Deciduous		Z = Water		
H = Hemlock	N = Marsh				



TIMBER SALE MAP

This information provided by authority of Part 5, 1994 PA 451, as amended.

Sale Number	Year
41-002-22	2022

Forest Management Unit Shingleton		County Schoolcraft		Mapped By Kyle Gould	Date 8/29/2022	Page 2	of 2
				Cruised By Kyle Gould			
Compartment Number 41128	Township 47N	Range 14W	Section(s) and Subdivision(s) 16 E1/2NE 21 - S1/2NW,S1/2NE,NWSW,S1/2SW,SE 28 - NW,SWNE,N1/2SW,SESW 33- E1/2NW		Scale: = 1 mile		

Cover Type				Density	
A = Aspen	J = Jack Pine	O = Oak	U = Upland Brush	0 = Non Stocked	5 = Pole Timber Medium
B = Paper Birch	K = Rock	P = Lowland Poplar	UM = Upland Mix Forest	1 = Seedling Sapling Poor	6 = Pole Timber Well
C = Cedar	L = Lowland Brush	Q = Mixed Swamp Conifer	V = Bog or Marsh	2 = Seedling Sapling Medium	7 = Saw Timber Poor
D = Treed Bog	LM = Lowland Mix Forest	R = Red Pine	W = White Pine	3 = Seedling Sapling Well	8 = Saw Timber Medium
E = Swamp Hardwoods	M = Maple, Beech, Birch	S = Black Spruce	X = Non Stocked	4 = Pole Timber Poor	9 = Saw Timber Well
F = Spruce/Fir	MC = Mixed Conifer	T = Tamarack	Y = Sand		
G = Grass	MD = Mixed Deciduous		Z = Water		
H = Hemlock	N = Marsh				

