



**DEPARTMENT OF NATURAL RESOURCES  
STATE OF MICHIGAN  
TIMBER SALE PROSPECTUS #7218**

**SCHEDULED SALE DATE AND TIME: 3:00 p.m. (local time) on May 4, 2023.**

**LOCATION: NEWBERRY MGMT UNIT, PO BOX 428, 5666 S STATE HWY M 123, NEWBERRY, MI 49868.**

**CONTACT NAME: Keith Magnusson**

**PHONE NUMBER: (906) 291-0120**

**PROSPECTUS NOTE:** The bidder is advised to inspect the sale area and review the location, estimated volumes, operating costs and contract terms of proposed sales. Please be aware that some landowners may request 60 days or more notice for access across their land.

Notice is hereby given that bids will be received by the Unit Manager, NEWBERRY MANAGEMENT UNIT, for certain timber on the following described lands:

Cheney Creek Ridge (42-005-22) / T49N, R06W, SEC. 19, NW.

T49N, R06W, SEC. 30, SWSW.

T49N, R06W, SEC. 31, N1/2NW, SENW, SWNE.

Chippewa County, Advertised Price \$34,041.55, 52.8 Acres, Jack Pine, Red Pine.

**SALE NOTE:** Within Payment Unit(s) 3, harvesting is limited to the period of December 15 to April 1 because of the low ground nature of the sale.

Some roads or skid trails may require extra protection such as that afforded by timber mats, interlocking composite mats, or another approved system. See Sale Spec 5.2.17 for details.

## TIMBER SALE INFORMATION

### Cheney Creek Ridge (42-005-22)

T49N, R06W, SEC. 19; T49N, R06W, SEC. 30; T49N, R06W, SEC. 31.

Chippewa County (Advertised Price \$34,041.55)

SALE NOTE: Within Payment Unit(s) 3, harvesting is limited to the period of December 15 to April 1 because of the low ground nature of the sale.

Some roads or skid trails may require extra protection such as that afforded by timber mats, interlocking composite mats, or another approved system. See Sale Spec 5.2.17 for details.

A timber sale contract for this lump sum, sealed bid timber sale will be awarded to the responsible bidder offering the highest sealed bid price. All units of volume listed below were estimated using the Inventory Manager computer program and the new Michigan taper model. Bids must be at or above the following advertised price for each product and species:

<u>PRODUCTS &amp; SPECIES</u>	<u>ESTIMATED UNITS*</u>	<u>ADVERTISED PRICE</u>
Pulpwood		
Balsam Fir	16 Cords	\$ 10.75 / Cord
Black Spruce	122 Cords	\$ 12.45 / Cord
Jack Pine	272 Cords	\$ 26.00 / Cord
Mixed Hardwood	63 Cords	\$ 14.85 / Cord
N. White Cedar	163 Cords	\$ 5.20 / Cord
Quaking Aspen	10 Cords	\$ 27.45 / Cord
Red Pine	328 Cords	\$ 64.25 / Cord
White Pine	113 Cords	\$ 19.00 / Cord

\* The total volume is statistically estimated within plus (+) or minus (-) 16.61 percent. There are an estimated 1,232 cords on this timber sale, plus or minus 205 cords at the 95% confidence level. The estimated units are final and not subject to adjustment. Prospective bidders are urged to examine this timber and to make their own estimates of quantity and quality.

### **BOND AND PAYMENT SCHEDULE:**

1. A bond in the amount of \$1,702.08 to insure faithful performance of the conditions of the contract will be deposited by the successful bidder within 21 days of the sale award.
2. Cutting in any sale or unit without the required advance payment would be considered a trespass.
3. Total payment must be paid in advance or according to the following schedule:
  - (a) Ten percent (10%) of the sale value must be paid within 21 days of the sale award.
  - (b) The 10% down payment will be credited towards the first unit cut.
  - (c) Payment for each of the following units must be made before cutting begins in that unit:

PAYMENT UNIT NUMBER	PERCENT OF TOTAL SALE VALUE
01	44.0%
02	50.5%
03	5.5%
4. If no cutting takes place, the 10% down payment will not be refunded.
5. Operations on the contract issued will terminate on 06/30/2026.

### **SALE STATISTICS**

Volumes were calculated in cubic feet using the Michigan taper model. Cubic foot volume includes all wood inside bark for the product indicated. For display purposes, cubic feet were converted to cords and MBF using a simple conversion factor, e.g. 79 cubic feet per cord and 185 cubic feet per MBF. The cubic foot volumes are precise; the cords and MBF volumes are not. Cubic foot volume cannot be directly converted to cords or boards with precision.

### **SALE VOLUMES**

The total estimated sale volume may not equal the sum of the species/products due to the nature of statistical calculations associated with double sampling methodology.

VOLUME			STATISTICAL RANGE IN CORDS	
TOTAL CUBIC FEET	TOTAL CORDS	PERCENT ERROR	MINIMUM	MAXIMUM
97,346	1,232	16.61%	1,028	1,437

## VDU VOLUMES

A VDU is a Volume Determination Unit. Volumes and their associated statistics are calculated at the VDU level and summarized to the sale level. There is often a one to one relationship between a VDU and a Payment Unit, but not always, depending on the cruise design. Refer to the VDU TO PAYMENT UNIT table.

	VOLUME			RANGE IN CORDS	
VDU	TOTAL CUBIC FEET	TOTAL CORDS	PERCENT ERROR	MINIMUM	MAXIMUM
98	39,182	496	24.82%	373	619
107	35,674	452	17.47%	373	530
136	22,491	285	32.15%	193	376
<b>TOTAL:</b>	<b>97,346</b>	<b>1,232</b>		<b>939</b>	<b>1,526</b>

## VDU TO PAYMENT UNIT

When a VDU is associated with more than one Payment Unit (PU), the VDU volumes are assigned to the PU based on acres of the VDU within the PU.

VDU	VDU ACRES	PU	PU ACRES
98	25.9	2	25.9
107	11.7	3	11.7
136	15.2	1	15.2
<b>TOTAL:</b>	<b>52.8</b>		<b>52.8</b>

## DESCRIPTION OF TIMBER BY PU (PU)

PU	MARKET GROUP	PRODUCT	QUANTITY	UNIT	ACRES	ADVERTISE PRICE
1	Balsam Fir	Pulpwood	2	Cords	15.2	\$14,991.65
	Mixed Hardwood		36	Cords		
	<i>Paper Birch</i>	<i>Sawtimber</i>	1.0	<i>MBF</i>		
	<i>Paper Birch</i>	<i>Pulpwood</i>	18	<i>Cords</i>		
	<i>Red Maple</i>		16	<i>Cords</i>		
	Quaking Aspen		4	Cords		
	Red Pine		207	Cords		
	White Pine		54	Cords		
2	Balsam Fir	Pulpwood	7	Cords	25.9	\$17,165.40
	Black Spruce		71	Cords		
	Jack Pine		272	Cords		
	Mixed Hardwood		5	Cords		
	<i>Paper Birch</i>		3	<i>Cords</i>		
	<i>Red Maple</i>		2	<i>Cords</i>		
	Quaking Aspen		6	Cords		
	Red Pine		121	Cords		
	White Pine		59	Cords		
3	Balsam Fir	Pulpwood	7	Cords	11.7	\$1,884.50
	Black Spruce		51	Cords		
	Mixed Hardwood		22	Cords		
	<i>Red Maple</i>		22	<i>Cords</i>		
	N. White Cedar		163	Cords		
TOTAL:			1,087	Cords		

## **Sale Specific Conditions & Requirements**

**Sale Name: Cheney Creek Ridge**

**Sale Number: 42-005-22 Seq#: 1**

### **1 - Sale Area**

#### **1.2 - Boundaries**

##### **1.2.1 - Painted boundaries (9/19)**

The sale boundary and Payment Unit boundaries are marked and identified by red paint. Exterior sale boundary lines against private property are marked with blue paint. Exterior sale boundary lines against state are marked with red paint. Interior Payment Unit boundaries are NOT marked, it is defined by the upland versus the lowland soil types. The painted boundary line trees are not Included Timber and are to be protected.

### **2 - Timber Specifications**

#### **2.1 - Included Timber**

##### **2.1.2 - Clearcut unit(s) w/o unmerchantable trees (8/11)**

Within Payment Unit(s) 1-3, cut all trees which meet minimum piece specifications in 2.2 Utilization. Do Not cut any Hemlock in Payment Unit 3 unless needed for operability. Every effort must be made to leave existing hemlock standing. Any Hemlock that is harvested must be decked separately and scaled by the timber sale administrator before hauling. Stumpage for any hemlock harvested will be \$50.00 per cord.

### **4 - Transportation**

#### **4.1 - Construction**

##### **4.1.1 - Stream crossings, general (3/11)**

All stream crossing structures will be temporary and therefore, shall be provided by the Purchaser, and must be removed upon completion of the sale. All permits for stream crossings will be provided by the DNR.

##### **4.1.4 - Timber removed for construction (12/09)**

Trees cut or damaged in the process of pre-approved road, landing or skid trail construction will be decked in an area separate from other Designated Timber and not removed until measured by the sale administrator. Payment will be made at the specified Purchase Unit Price.

##### **4.1.6 - Road construction (1/09)**

Construction of new roads or improvements of existing roads shall be done in such a way as to minimize the environmental and visual impacts. Merchantable trees shall be cut and utilized unless otherwise directed. Non-merchantable trees shall be severed and laid flat on the ground. Slash shall be scattered, and not left in windrows and kept a minimum of 10 feet back from the road edge. Stumps shall be set upright, not left on edge, and be moved at least 10 feet away from the road edge. Disturbed soil shall be feathered into the woods and not left in berms or windrows.

##### **4.1.7 - Road closure (10/11)**

All new roads built into the sale must be blocked to vehicle traffic within 30 days of completion of hauling. Overgrown roads that are reopened shall be considered new roads. In general, this will require constructing double earthen berms at strategic locations. These roads must be rendered impassable to cars and trucks. Contact the sale administrator for specific details of design and placement.

### **5 - Operations**

#### **5.2 - Conduct of Operations**

##### **5.2.1 - Slash**

###### **5.2.1.8 - Slash height (12/08)**

No slash or tree tops may exceed 36 inches in height.

##### **5.2.2 - Hazard Trees/Snags**

#### 5.2.2.1 - Den trees (10/16)

Obvious hollow and/or den trees shall be protected and left standing unless they are a safety hazard.

### 5.2.3 - Operating Restrictions

#### 5.2.3.1 - Operating restrictions (9/11)

Within Payment Unit(s) 3, unless changed by written agreement, cutting, skidding and hauling are limited to the period of December 15 to April 1. This restriction is because of the low ground nature of the sale.

#### 5.2.17 - Timber Mats and Interlocking Composite Mats (10/20)

Some roads or skid trails may require extra protection such as that afforded by timber mats, interlocking composite mats, or another approved system. Approximately 100 feet of road or trail will need extra protection at locations shown on the Timber Sale Map. If available, mats may be borrowed from the DNR. A Timber Sale Contract Supplement will be used to document the Purchaser's use of the DNR's mats. Contact the sale administrator regarding availability and pick-up. Timber mats are available from various field offices. Composite mats are only available from the Grayling field office and the Marquette ICC. The Purchaser is responsible for picking up and hauling the mats to and from the site. The composite mats will require DNR staff onsite for installation and removal. Contact the sale administrator to schedule at least 30 days before desired install/removal date. All mats must be cleaned prior to drop off. This may include, but is not limited to, power washing and brushing to remove mud and debris. A charge of \$700.00 per timber mat and \$2,000.00 per composite mat will be assessed for all damaged or non-returned mats. Damage for the crane/timber mats is defined as three or more broken cants. Damage for the composite mats is defined as cracked or broken mats.

### 5.4 - Soil Protection

#### 5.4.1 - Rutting restriction, general (7/16)

Operations are to cease immediately if equipment and weather conditions result in rutting of roads which is 12 inches or greater in depth and 50 feet in length. The Unit Manager or his/her representative may restrict hauling and/or skidding if ruts exceed the specified depth. With the Unit Manager or his/her representative's approval, the Purchaser may return to the area when the risk of rutting has decreased.

#### 5.4.2 - Skid trails (2/04)

Skid trails up and down slopes should be avoided. If however this is unavoidable, these trails will be left in a non-erodible condition using water bars, logs, and slash. Placing of slash on these skid trails while logging is ongoing may alleviate need for any further action. At the direction of the sale administrator, seed, fertilizer, and mulch may also be required.

#### 5.4.4 - Slope protection (9/19)

Skid trails and roads on slopes shall be water barred with slash, stumps, and/or clean straw bales native to the area as soon as use is complete to prevent erosion.

### 5.8 - Protection of Endangered Species

#### 5.8.5 - Protection of raptor nests (3/13)

All trees with raptor nests will be protected if found during harvesting operations. Notification will be made to the Unit Manager or his/her representative who will notify the Wildlife Biologist so an on-site evaluation and recommendation can be made, if necessary.

## 6 - Safety and Fire Prevention

### 6.2 - Signing

#### 6.2.1 - Road posting (10/20)

The Purchaser is responsible for posting and maintaining caution signs on the Preacher Lakes Road and Station South Road prior to beginning operations. The road must be posted at appropriate distances from the sale area to warn of logging activity and truck traffic. Signs must be removed when harvest operations are suspended or completed. The Purchaser will provide these signs.

#### 6.2.2 - Snowmobile trail posting (10/20)

The Purchaser is responsible for posting and maintaining caution signs on the snowmobile trail prior to beginning operations during the snowmobile season (approximately December 1 to March 31). The trail must be posted at locations designated on the map at appropriate distances from the Preacher Lakes Road and Station South Road intersections to warn of logging

activity and truck traffic. Signs must be removed when harvest operations are suspended or completed. The DNR will provide these signs.



## TIMBER SALE MAP

This information provided by authority of Part 525, 1994 PA 451, as amended.

Sale Number	Year
42-005	22

Forest Management Unit	County	Mapped By	Date	Page	of
Newberry	Chippewa	L. Livermore	7/22/2022	1	2

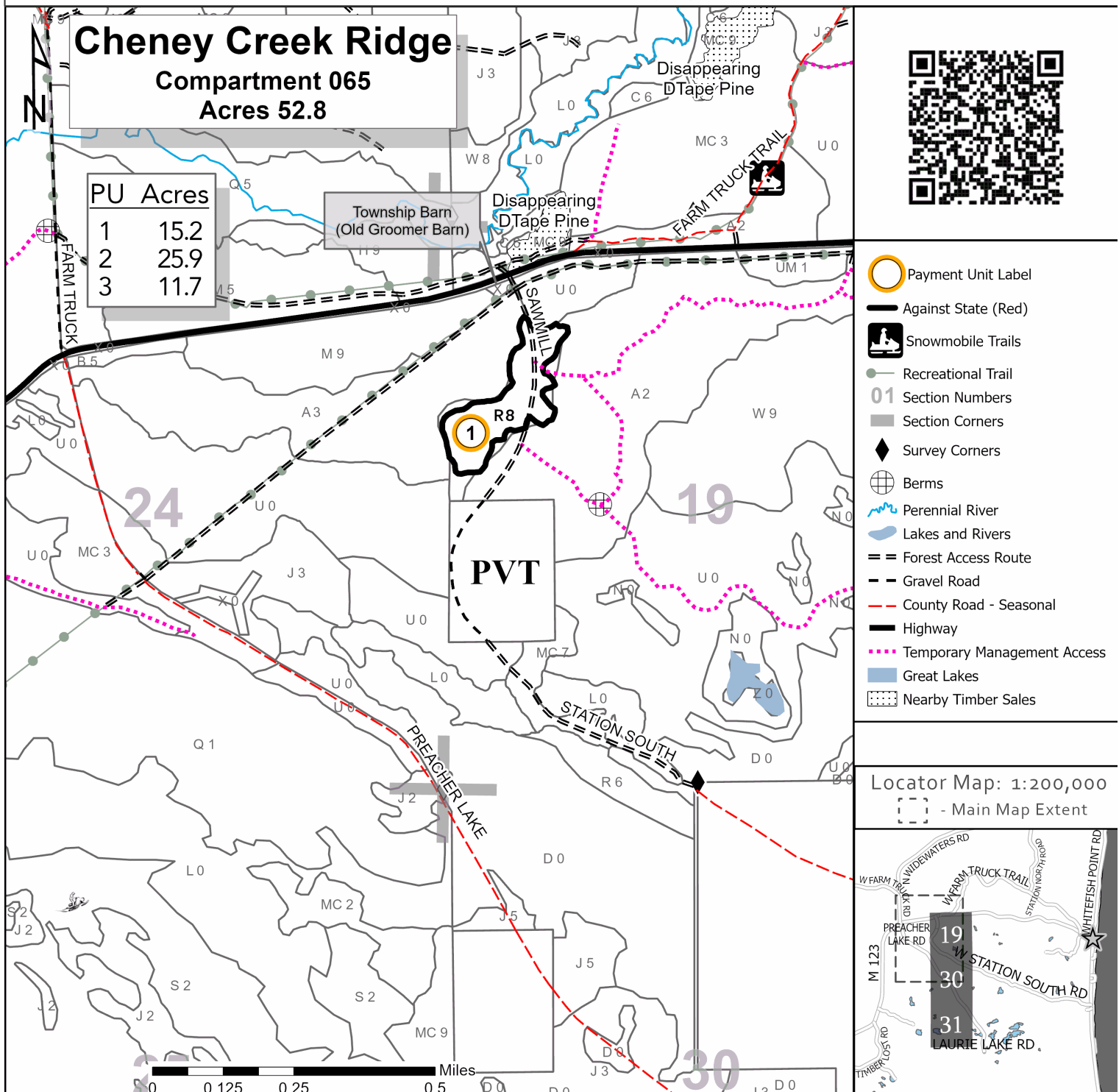
Township	Range	Section(s) and Subdivision(s)	Scale
49N	06W	Section 06: NW Section 30: SWSW Section 31: N½NW, SENW, SWNE	1:15,840

## Cover Type

A = Aspen	H = Hemlock	N = Marsh	U = Upland Brush
B = Paper Birch	J = Jack Pine	O = Oak	UM = Upland Mixed
C = Cedar	L = Lowland Brush	P = Lowland Poplar	V = Bog or Marsh
D = Treed Bog	LM = Lowland Mixed	Q = Mixed Swamp Conifer	W = White Pine
E = Swamp Hdwoods	M = Mpl, Bch, Brch	R = Red Pine	X = Non Stocked
F = Spruce Fir	MC = Mixed Conifer	S = Black Spruce	Z = Water
G = Grass	MD = Mixed Deciduous	T = Tamarack	

## Density

0 = Non Stocked	5 = Pole Timber Medium
1 = Seedling Sapling Poor	6 = Pole Timber Well
2 = Seedling Sapling Medium	7 = Saw Timber Poor
3 = Seedling Sapling Well	8 = Saw Timber Medium
4 = Pole Timber Poor	9 = Saw Timber Well



**TIMBER SALE MAP**

This information provided by authority of Part 525, 1994 PA 451, as amended.

Sale Number	Year
42-005	22

Forest Management Unit Newberry	County Chippewa	Mapped By L. Livermore	Date 7/22/2022	Page 2	of 2
Township 49N	Range 06W	Section(s) and Subdivision(s) Section 06: NW Section 30: SWSW Section 31: N½NW, SENW, SWNE	Scale 1:15,840		

**Cover Type**

A = Aspen	H = Hemlock	N = Marsh	U = Upland Brush
B = Paper Birch	J = Jack Pine	O = Oak	UM = Upland Mixed
C = Cedar	L = Lowland Brush	P = Lowland Poplar	V = Bog or Marsh
D = Treed Bog	LM = Lowland Mixed	Q = Mixed Swamp Conifer	W = White Pine
E = Swamp Hdwoods	M = Mpl, Bch, Brch	R = Red Pine	X = Non Stocked
F = Spruce Fir	MC = Mixed Conifer	S = Black Spruce	Z = Water
G = Grass	MD = Mixed Deciduous	T = Tamarack	

**Density**

0 = Non Stocked	5 = Pole Timber Medium
1 = Seedling Sapling Poor	6 = Pole Timber Well
2 = Seedling Sapling Medium	7 = Saw Timber Poor
3 = Seedling Sapling Well	8 = Saw Timber Medium
4 = Pole Timber Poor	9 = Saw Timber Well

