



**DEPARTMENT OF NATURAL RESOURCES
STATE OF MICHIGAN
TIMBER SALE PROSPECTUS #7209**

SCHEDULED SALE DATE AND TIME: 9:00 a.m. (local time) on April 6, 2023.

LOCATION: PIGEON RIVER COUNTRY MGMT UNIT, PO BOX 456, 9966 TWIN LAKES ROAD, VANDERBILT, MI

CONTACT NAME: Mark Monroe

PHONE NUMBER: (989) 983-4101

PROSPECTUS NOTE: The bidder is advised to inspect the sale area and review the location, estimated volumes, operating costs and contract terms of proposed sales. Please be aware that some landowners may request 60 days or more notice for access across their land.

Notice is hereby given that bids will be received by the Unit Manager, PIGEON RIVER COUNTRY MANAGEMENT UNIT, for certain timber on the following described lands:

Aspan's Labyrinth (53-018-22) / T32N, R01W, SEC. 24, SESW,SWSE.

T32N, R01W, SEC. 25, N1/2NW,SENW,NE.

Otsego County, Advertised Price \$43,976.95, 67.6 Acres, Aspen, Hardwood.

TIMBER SALE INFORMATION

Aspen's Labyrinth (53-018-22)
T32N, R01W, SEC. 24; T32N, R01W, SEC. 25.
Otsego County (Advertised Price \$43,976.95)

A timber sale contract for this lump sum, sealed bid timber sale will be awarded to the responsible bidder offering the highest sealed bid price. All units of volume listed below were estimated using the Inventory Manager computer program and the new Michigan taper model. Bids must be at or above the following advertised price for each product and species:

<u>PRODUCTS & SPECIES</u>	<u>ESTIMATED UNITS*</u>	<u>ADVERTISED PRICE</u>
Sawtimber		
Mixed Aspen	155.3 MBF	\$ 44.00 / MBF
Red Maple	27.4 MBF	\$ 59.00 / MBF
Sugar Maple	4.1 MBF	\$ 262.00 / MBF
White Pine	16.3 MBF	\$ 98.00 / MBF
Pulpwood		
Balsam Fir	42 Cords	\$ 20.40 / Cord
Jack Pine	11 Cords	\$ 15.90 / Cord
Mixed Aspen	1,141 Cords	\$ 21.65 / Cord
Mixed Hardwood	182 Cords	\$ 18.60 / Cord
Mixed Spruce	51 Cords	\$ 16.80 / Cord
White Pine	122 Cords	\$ 23.60 / Cord

* The total volume is statistically estimated within plus (+) or minus (-) 17.27 percent. There are an estimated 2,044 cords on this timber sale, plus or minus 353 cords at the 95% confidence level. The estimated units are final and not subject to adjustment. Prospective bidders are urged to examine this timber and to make their own estimates of quantity and quality.

BOND AND PAYMENT SCHEDULE:

- A bond in the amount of \$4,397.70 to insure faithful performance of the conditions of the contract will be deposited by the successful bidder within 21 days of the sale award.
- Cutting in any sale or unit without the required advance payment would be considered a trespass.
- Total payment must be paid in advance or according to the following schedule :
 - Ten percent (10%) of the sale value must be paid within 21 days of the sale award.
 - The 10% down payment will be credited towards the first unit cut.
 - Payment for each of the following units must be made before cutting begins in that unit:

PAYMENT UNIT NUMBER	PERCENT OF TOTAL SALE VALUE
01	16.2%
02	7.5%
03	41.1%
04	35.2%
- If no cutting takes place, the 10% down payment will not be refunded.
- Operations on the contract issued will terminate on 03/01/2026.

SALE STATISTICS

Volumes were calculated in cubic feet using the Michigan taper model. Cubic foot volume includes all wood inside bark for the product indicated. For display purposes, cubic feet were converted to cords and MBF using a simple conversion factor, e.g. 79 cubic feet per cord and 185 cubic feet per MBF. The cubic foot volumes are precise; the cords and MBF volumes are not. Cubic foot volume cannot be directly converted to cords or boards with precision.

SALE VOLUMES

The total estimated sale volume may not equal the sum of the species/products due to the nature of statistical calculations associated with double sampling methodology.

VOLUME		STATISTICAL RANGE IN CORDS		
TOTAL CUBIC FEET	TOTAL CORDS	PERCENT ERROR	MINIMUM	MAXIMUM
161,498	2,044	17.27%	1,691	2,397

VDU VOLUMES

A VDU is a Volume Determination Unit. Volumes and their associated statistics are calculated at the VDU level and summarized to the sale level. There is often a one to one relationship between a VDU and a Payment Unit, but not always, depending on the cruise design. Refer to the VDU TO PAYMENT UNIT table.

	VOLUME			RANGE IN CORDS	
VDU	TOTAL CUBIC FEET	TOTAL CORDS	PERCENT ERROR	MINIMUM	MAXIMUM
89	14,206	180	23.45%	138	222
94	25,678	325	68.18%	103	547
104	121,614	1,539	20.24%	1,228	1,851
TOTAL:	161,498	2,044		1,469	2,620

VDU TO PAYMENT UNIT

When a VDU is associated with more than one Payment Unit (PU), the VDU volumes are assigned to the PU based on acres of the VDU within the PU.

VDU	VDU ACRES	PU	PU ACRES
89	7.5	2	7.5
94	8.0	1	8.0
104	52.1	3	28.1
		4	24.0
TOTAL:	67.6		67.6

DESCRIPTION OF TIMBER BY PU (PU)

PU	MARKET GROUP	PRODUCT	QUANTITY	UNIT	ACRES	ADVERTISE PRICE
1	Mixed Aspen	Sawtimber	40.1	MBF	8.0	\$7,113.05
	<i>B. T. Aspen</i>		40.1	<i>MBF</i>		
	Red Maple	8.7	MBF			
	Mixed Aspen	Pulpwood	179	Cords		
	<i>B. T. Aspen</i>		162	<i>Cords</i>		
	<i>Quaking Aspen</i>		17	<i>Cords</i>		
	Mixed Hardwood		44	Cords		
	<i>Red Maple</i>		44	<i>Cords</i>		
	White Pine		6	Cords		
2	Mixed Aspen	Sawtimber	7.2	MBF	7.5	\$3,281.25
	<i>Quaking Aspen</i>		7.2	<i>MBF</i>		
	White Pine	Pulpwood	3.9	MBF		
	Balsam Fir		30	Cords		
	Mixed Aspen		17	Cords		
	<i>Quaking Aspen</i>		17	<i>Cords</i>		
	Mixed Hardwood		35	Cords		
	<i>Red Maple</i>		35	<i>Cords</i>		
	Mixed Spruce	Sawtimber	51	Cords		
	<i>Black Spruce</i>		2.9	<i>MBF</i>		
	<i>White Spruce</i>		2.0	<i>MBF</i>		
	<i>Black Spruce</i>	Pulpwood	40	<i>Cords</i>		
	<i>White Spruce</i>		1	<i>Cords</i>		
	White Pine	4	Cords			
	3	Mixed Aspen	Sawtimber	58.3		
<i>B. T. Aspen</i>			37.1	<i>MBF</i>		
<i>Quaking Aspen</i>			21.2	<i>MBF</i>		
Red Maple		Pulpwood	10.1	MBF		
Sugar Maple			2.2	MBF		
White Pine			6.7	MBF		
Balsam Fir			6	Cords		
Jack Pine			6	Cords		
Mixed Aspen			510	Cords		
<i>B. T. Aspen</i>			226	<i>Cords</i>		
<i>Quaking Aspen</i>			284	<i>Cords</i>		
Mixed Hardwood			56	Cords		
<i>Red Maple</i>			52	<i>Cords</i>		
<i>Sugar Maple</i>			4	<i>Cords</i>		
White Pine			60	Cords		
4		Mixed Aspen	Sawtimber	49.7	MBF	24.0
	<i>B. T. Aspen</i>		31.6	<i>MBF</i>		
	<i>Quaking Aspen</i>		18.1	<i>MBF</i>		
	Red Maple	Pulpwood	8.6	MBF		
	Sugar Maple		1.9	MBF		
	White Pine		5.7	MBF		
	Balsam Fir		6	Cords		
	Jack Pine		5	Cords		
	Mixed Aspen		435	Cords		
	<i>B. T. Aspen</i>		193	<i>Cords</i>		
	<i>Quaking Aspen</i>		242	<i>Cords</i>		
	Mixed Hardwood		47	Cords		
	<i>Red Maple</i>		44	<i>Cords</i>		
	<i>Sugar Maple</i>		3	<i>Cords</i>		
	White Pine		52	Cords		
TOTAL:			203.1	MBF		

TOTAL:	1,549	Cords
--------	-------	-------

Sale Specific Conditions & Requirements

Sale Name: Aspan's Labyrinth

Sale Number: 53-018-22 Seq#: 1

1 - Sale Area

1.2 - Boundaries

1.2.1 - Painted boundaries (9/19)

The sale boundary and Payment Unit boundaries are marked and identified by red and yellow paint. Exterior sale boundary lines against state are marked with red paint. Interior retention areas are marked with red X's. Interior Payment Unit boundaries are marked with yellow paint. Red painted boundary line trees are not Included Timber and are to be protected. Yellow painted trees designating an interior Payment Unit boundary are only to be cut when all surrounding Payment Units have been paid, except do not cut if they are marked with green paint or are one of the tree species designated not to be cut.

2 - Timber Specifications

2.1 - Included Timber

2.1.1 - Clearcut unit(s) with unmerchantable trees (6/14)

Within Payment Unit(s) #'s 1-4, , cut all trees that are (2) inches or more at DBH except do not cut any trees marked with green paint and do not cut any of the following tree species: cedar, hemlock, elm, spruce, basswood, black cherry, red pine, birch, and oak. In addition, do not cut any dead ash. Exception: In Payment Unit #2 cut all spruce except for those marked with green paint.

2.2 - Utilization

2.2.11 - Chipping restriction (9/14)

If chipping occurs on this sale, then no woody debris present on the ground at the start of the sale may be chipped. In addition, brush or chips may not be stored or stockpiled on-site for more than 30 days.

3 - Payments

3.4 - Damaged Timber

3.4.1 - Damaged timber (7/16)

General Condition and Requirement 3.4 Damaged Timber, defines liquidated damages for undesignated live merchantable trees which are cut or injured. No damage is acceptable to undesignated live merchantable trees. Within the sale area, if more than 5% of trees (> 4.5" DBH) within a specified area of the sale are damaged, liquidated damages will be assessed for all trees damaged. Rates will be in accordance with General Condition and Requirement 3.4 Damaged Timber. In addition, extreme care should be taken to avoid damage to any oak regeneration.

4 - Transportation

4.1 - Construction

4.1.3 - Slash and earthen piles (8/04)

Piles or windrows of earth along roads and landings that have been widened or constructed shall be leveled. Slash from road maintenance or construction, including stumps, shall be dispersed throughout the sale.

4.1.4 - Timber removed for construction (12/09)

Trees cut or damaged in the process of pre-approved road, landing or skid trail construction will be decked in an area separate from other Designated Timber and not removed until measured by the sale administrator. Payment will be made at the specified Purchase Unit Price.

4.1.12 - No new roads (1/12)

No new roads will be permitted in any Payment Unit. All operations are limited to existing roads. Skid trails only will be allowed.

4.2 - Maintenance

4.2.5 - Two wheel drive condition (2/04)

All existing trail roads on and adjacent to the sale area must be passable by two-wheel drive traffic for the duration of the sale.

4.4 - Access

4.4.3 - Access gate (12/08)

The access gate must be locked at the completion of each day unless otherwise approved by the Unit Manager or his/her representative.

5 - Operations

5.2 - Conduct of Operations

5.2.1 - Slash

5.2.1.10 - No slash in openings (5/10)

No brush or logging debris is to be left in the maintained wildlife opening which is indicated by G0 on the Timber Sale Map. Any damage to the opening shall be repaired according to specifications of the Unit Manager or his/her representative.

5.2.1.11 - Slash for reforestation (3/21)

To facilitate reforestation, the Sale Area shall be left with slash evenly distributed. Bunched tops within the cutting area shall be broken up and scattered. Stumps shall be cut low to the ground. Processing sites shall not be left with a compacted layer of slash; tops from these sites shall be hauled back into the cut area and scattered.

5.2.2 - Hazard Trees/Snags

5.2.2.1 - Den trees (10/16)

Obvious hollow and/or den trees shall be protected and left standing unless they are a safety hazard.

5.2.3 - Operating Restrictions

5.2.3.11 - Coppice regeneration protection (4/10)

To promote aspen regeneration, harvesting is limited to November 1st through March 31st. Timber harvesting in any Payment Unit must be completed before significant aspen sprouting occurs in that Payment Unit so as to minimize damage to the new regeneration. Any post harvest operations, such as chipping, must be completed before sprouting of regeneration occurs. If it is anticipated that chipping will be delayed, then tops shall be carried to one central location or left unchipped. The Unit Manager or his/her representative may cease such operations if sprouting occurs before the operation is complete.

5.2.4 - Dead and Down Creation

5.2.4.3 - Dead and down creation, dead trees (6/07)

Except as provided for in General Condition and Requirement 5.2.2, no dead trees, standing or down, are to be cut, skidded, or processed.

5.2.4.4 - Dead and down creation, grouse (6/18)

To encourage grouse and other wildlife, in Payment Unit(s) 1, 2, 3, and 4 leave one 12" or larger diameter (or largest diameter trees within stand) whole tree on the ground for every 2 acres, preferably a hardwood species such as oak or maple or if no hardwoods are present, a pine species (white or red). at least six (6) large tops per acre. These will be evenly scattered throughout the unit. These trees will be evenly scattered throughout the unit, preferably at least two chains from any roads, two-tracks, or trails open to vehicles.

5.2.22 - Operating Caution

5.2.22.2 - Operating caution (6/11)

It is recommended, but not required, that within Payment Unit(s) #2, cutting, skidding, and hauling occur during frozen winter conditions. The reason for the recommendation is because of wet ground within the Unit.

5.2.29 - Shrub protection (1/20)

Do not cut or damage hawthorn, witch-hazel, dogwood or junberry. These woody-shrub plants are highly beneficial to various wildlife species.

5.2.31 - Landing locations (9/13)

Recommended landing areas are marked on the timber sale map with Landing areas are marked on the Timber Sale Map with the letter "LD". Landings must be confined to these designated sites unless otherwise authorized by the Unit Manager or his/her representative.

5.2.32 - Decking/landing restoration (9/13)

All decking and landing areas must have the surface area restored to a condition equal to or better than before. This is to ensure the proper regeneration of the stand. Wood debris, chips and "cookies" from trimmings must be removed or scattered away from landing and loading areas and may not be windrowed on the edge.

5.2.38 - No decking against live trees (2/04)

Cut products may not be decked against unmarked or designated leave trees.

5.2.43 - Opening protection (2/21)

No activities are permitted in openings marked on the Timber Sale Map with the letter "G". Any damage to the openings shall be repaired according to specifications of the Unit Manager or his/her representative.

5.4 - Soil Protection

5.4.1 - Rutting restriction, general (7/16)

Operations are to cease immediately if equipment and weather conditions result in rutting of roads and/or skid trails which is 12 inches or greater in depth and 25 feet in length. The Unit Manager or his/her representative may restrict hauling and/or skidding if ruts exceed the specified depth. With the Unit Manager or his/her representative's approval, the Purchaser may return to the area when the risk of rutting has decreased.

5.4.6 - Wet area protection (5/10)

No harvesting operations, including skidding and felling, are to take place within the marsh area that is marked "N" on the timber sale map. When harvesting occurs, there should be no disturbance to the marsh depression. When harvesting occurs, there should be no disturbance to the marsh depression. All equipment, trees and tops should be kept out of this area. Within 100 feet of the pond, equipment should only be used when the soil is in a dry or frozen condition. Care must be taken by the Purchaser to identify and avoid operating in these areas of the timber sale.

5.8 - Protection of Endangered Species

5.8.5 - Protection of raptor nests (3/13)

All trees with raptor nests will be protected if found during harvesting operations. Notification will be made to the Unit Manager or his/her representative who will notify the Wildlife Biologist so an on-site evaluation and recommendation can be made, if necessary.



TIMBER SALE MAP

This information provided by authority of Part 525, 1994 PA 451, as amended.

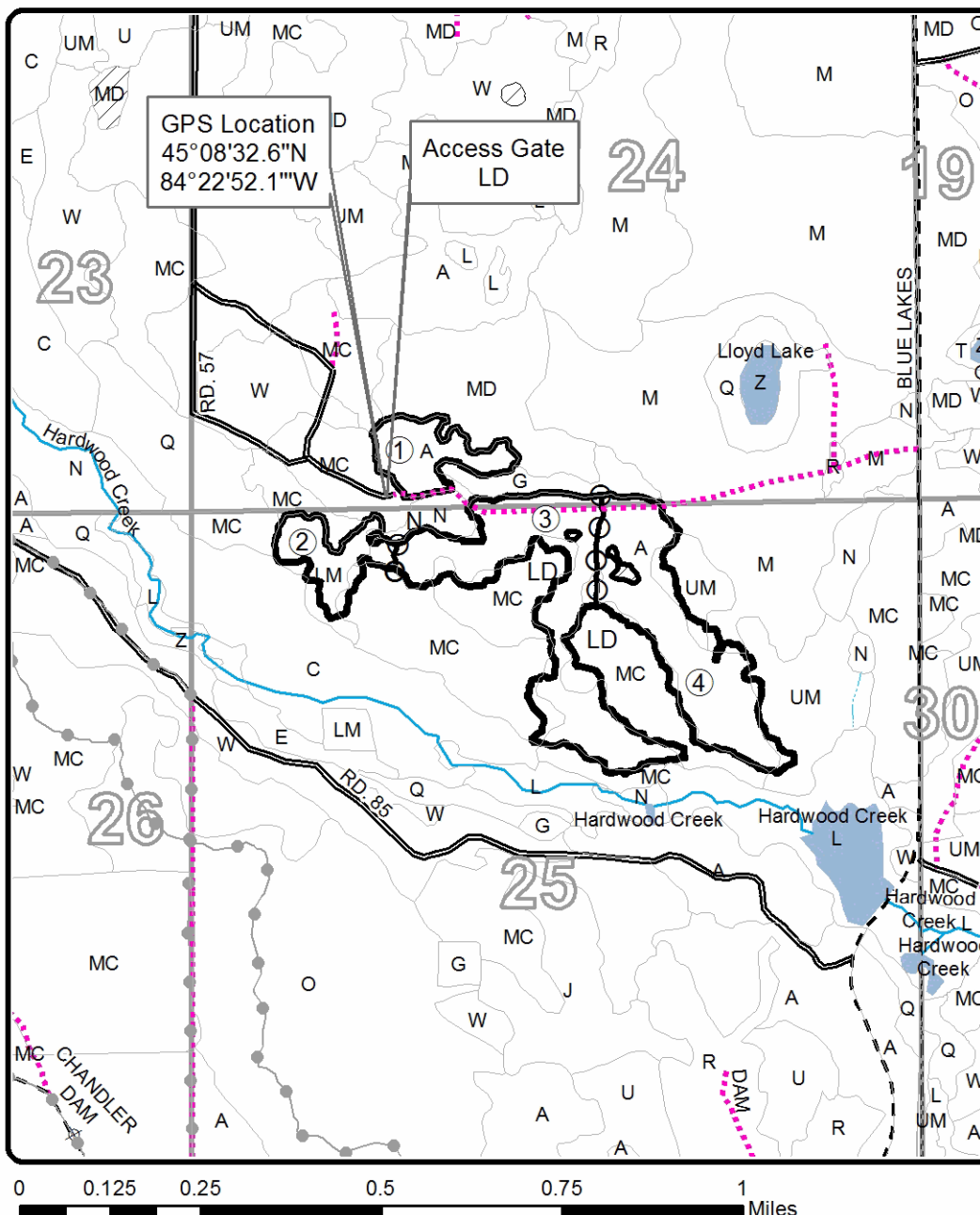
Sale Number	Year
53-024	22

Forest Management Unit Pigeon River Country	County Otsego	Mapped By Halabut	Date 09/12/22	Page 1	of 1
Township 32N	Range 01W	Section(s) and Subdivision(s) 24: SESW, SWSE; 25: N1/2NW, SENW, NE	Scale 1:15,840		

Cover Type				Density	
A = Aspen	H = Hemlock	N = Marsh	U = Upland Brush	0 = Non Stocked	5 = Pole Timber Medium
B = Paper Birch	J = Jack Pine	O = Oak	UM = Upland Mixed	1 = Seedling Sapling Poor	6 = Pole Timber Well
C = Cedar	L = Lowland Brush	P = Lowland Poplar	V = Bog or Marsh	2 = Seedling Sapling Medium	7 = Saw Timber Poor
D = Tread Bog	LM = Lowland Mixed	Q = Mixed Swamp Conifer	W = White Pine	3 = Seedling Sapling Well	8 = Saw Timber Medium
E = Swamp Hdwoods	M = Mpl, Bch, Brch	R = Red Pine	X = Non Stocked	4 = Pole Timber Poor	9 = Saw Timber Well
F = Spruce Fir	MC = Mixed Conifer	S = Black Spruce	Z = Water		
G = Grass	MD = Mixed Deciduous	T = Tamarack			

PU	Acres	PU	Acres
1	8.0	3	28.1
2	7.5	4	24.0

Aspan's Labyrinth

Compartment 41
67.6 Acres

Legend

- Against State (Red)
- ○ Payment Unit (Yellow)
- — Recreational Trail
- Stand_Boundary
- Secondary Forest Road
- - Gravel Road
- ⋯ Temporary Road
- ⋯ Intermittent Stream
- Perennial River
- Lakes and Rivers
- ▨ Retention Area (Red X's)

Locator Map
1:200,000