



**DEPARTMENT OF NATURAL RESOURCES
STATE OF MICHIGAN**

TIMBER SALE PROSPECTUS #7240

REVISION NOTICE #1 - August 14, 2023

SCHEDULED SALE DATE AND TIME: **10:00 a.m. (local time) on Thursday, August 24, 2023**

LOCATION: **GLADWIN MGMT UNIT, 801 NORTH SILVERLEAF, GLADWIN, MI 48624**

This prospectus has been modified with the following changes. Leota Fuelbreak RP 73-998-23 has been removed from this prospectus. The sale has a volume calculation error. The sale will be readvertised once corrected.

Leota Fuelbreak RP (73-998-23) has been withdrawn from this prospectus.

We apologize for any inconvenience this may have caused. If you need assistance, please contact Blair Tweedale at 989-426-9205 ext. 7640.



**DEPARTMENT OF NATURAL RESOURCES
STATE OF MICHIGAN
TIMBER SALE PROSPECTUS #7240**

SCHEDULED SALE DATE AND TIME: 10:00 a.m. (local time) on August 24, 2023.

LOCATION: GLADWIN MGMT UNIT, 801 NORTH SILVERLEAF, GLADWIN, MI 48624.

CONTACT NAME: Blair Tweedale

PHONE NUMBER: (989) 426-9205

PROSPECTUS NOTE: The bidder is advised to inspect the sale area and review the location, estimated volumes, operating costs and contract terms of proposed sales. Please be aware that some landowners may request 60 days or more notice for access across their land.

Notice is hereby given that bids will be received by the Unit Manager, GLADWIN MANAGEMENT UNIT, for certain timber on the following described lands:

Eastman Dustbowl (73-008-22) / T17N, R02E, SEC. 5 , NE,NESE.

T18N, R02E, SEC. 29, S1/2NE,SW,SE.

T18N, R02E, SEC. 30, SESE.

T18N, R02E, SEC. 32, SESW,S1/2SE.

Gladwin County, Advertised Price \$124,668.20, 183.2 Acres, Aspen, Hardwood.

SALE NOTE: The sale area for Eastman Dustbowl can be accessed from Eastman road. There is low / wet ground throughout the sale and operating caution specs have been added. Payment unit 1 is a leave tree unit with 13 BA/acre marked to leave. Oak wilt with no exceptions has been added to payment unit 1.

A recreation site such as a trail, pathway, or campground is within the sale area or the vicinity.
Certain restrictions/specifications may be applicable including time restrictions.

TIMBER SALE INFORMATION

Eastman Dustbowl (73-008-22)

T17N, R02E, SEC. 5; T18N, R02E, SEC. 29; T18N, R02E, SEC. 30; T18N, R02E, SEC. 32.

Gladwin County (Advertised Price \$124,668.20)

SALE NOTE: The sale area for Eastman Dustbowl can be accessed from Eastman road. There is low / wet ground throughout the sale and operating caution specs have been added. Payment unit 1 is a leave tree unit with 13 BA/acre marked to leave. Oak wilt with no exceptions has been added to payment unit 1.

A recreation site such as a trail, pathway, or campground is within the sale area or the vicinity. Certain restrictions/specifications may be applicable including time restrictions.

A timber sale contract for this lump sum, sealed bid timber sale will be awarded to the responsible bidder offering the highest sealed bid price. All units of volume listed below were estimated using the Inventory Manager computer program and the new Michigan taper model. Bids must be at or above the following advertised price for each product and species:

<u>PRODUCTS & SPECIES</u>	<u>ESTIMATED UNITS*</u>	<u>ADVERTISED PRICE</u>
Sawtimber		
Mixed Aspen	57.1 MBF	\$ 76.00 / MBF
Mixed Oak	211.9 MBF	\$ 112.00 / MBF
Red Maple	140.3 MBF	\$ 72.00 / MBF
Red Pine	69.4 MBF	\$ 121.00 / MBF
Pulpwood		
Black Cherry	54 Cords	\$ 20.60 / Cord
Mixed Aspen	897 Cords	\$ 31.45 / Cord
Mixed Oak	728 Cords	\$ 16.90 / Cord
Paper Birch	71 Cords	\$ 21.45 / Cord
Red Maple	1,146 Cords	\$ 20.60 / Cord
Red Pine	216 Cords	\$ 52.50 / Cord

* The total volume is statistically estimated within plus (+) or minus (-) 10.12 percent. There are an estimated 4,210 cords on this timber sale, plus or minus 426 cords at the 95% confidence level. The estimated units are final and not subject to adjustment. Prospective bidders are urged to examine this timber and to make their own estimates of quantity and quality.

BOND AND PAYMENT SCHEDULE:

1. A bond in the amount of \$6,233.41 to insure faithful performance of the conditions of the contract will be deposited by the successful bidder within 21 days of the sale award.
2. Cutting in any sale or unit without the required advance payment would be considered a trespass.
3. Total payment must be paid in advance or according to the following schedule:
 - (a) Ten percent (10%) of the sale value must be paid within 21 days of the sale award.
 - (b) The 10% down payment will be credited towards the first unit cut.
 - (c) Payment for each of the following units must be made before cutting begins in that unit:

<u>PAYMENT UNIT NUMBER</u>	<u>PERCENT OF TOTAL SALE VALUE</u>
01	13.2%
02	48.3%
03	23.6%
04	14.9%

4. If no cutting takes place, the 10% down payment will not be refunded.
5. Operations on the contract issued will terminate on 09/30/2025.

SALE STATISTICS

Volumes were calculated in cubic feet using the Michigan taper model. Cubic foot volume includes all wood inside bark for the product indicated. For display purposes, cubic feet were converted to cords and MBF using a simple conversion factor, e.g. 79 cubic feet per cord and 185 cubic feet per MBF. The cubic foot volumes are precise; the cords and MBF volumes are not. Cubic foot volume cannot be directly converted to cords or boards with precision.

SALE VOLUMES

The total estimated sale volume may not equal the sum of the species/products due to the nature of statistical calculations associated with double sampling methodology.

VOLUME			STATISTICAL RANGE IN CORDS	
TOTAL CUBIC FEET	TOTAL CORDS	PERCENT ERROR	MINIMUM	MAXIMUM
332,577	4,210	10.12%	3,784	4,636

VDU VOLUMES

A VDU is a Volume Determination Unit. Volumes and their associated statistics are calculated at the VDU level and summarized to the sale level. There is often a one to one relationship between a VDU and a Payment Unit, but not always, depending on the cruise design. Refer to the VDU TO PAYMENT UNIT table.

	VOLUME			RANGE IN CORDS	
VDU	TOTAL CUBIC FEET	TOTAL CORDS	PERCENT ERROR	MINIMUM	MAXIMUM
49	54,078	685	25.12%	513	856
50	11,217	142	23.81%	108	176
92	70,707	895	14.12%	769	1,021
110	39,219	496	26.15%	367	626
237	108,056	1,368	14.47%	1,170	1,566
238	49,301	624	24.89%	469	779
TOTAL:	332,577	4,210		3,395	5,025

VDU TO PAYMENT UNIT

When a VDU is associated with more than one Payment Unit (PU), the VDU volumes are assigned to the PU based on acres of the VDU within the PU.

VDU	VDU ACRES	PU	PU ACRES
49	22.7	4	22.7
50	6.2	3	6.2
92	37.9	3	37.9
110	10.4	2	10.4
237	77.6	2	77.6
238	28.4	1	28.4
TOTAL:	183.2		183.2

DESCRIPTION OF TIMBER BY PU (PU)

PU	MARKET GROUP	PRODUCT	QUANTITY	UNIT	ACRES	ADVERTISE PRICE
1	Mixed Oak	Sawtimber	23.7	MBF	28.4	\$16,411.80
	Northern Pin Oak		22.1	MBF		
	White Oak		1.6	MBF		
	Red Maple		44.2	MBF		
	Black Cherry		3	Cords		
	Black Cherry		3	Cords		
	Mixed Aspen		99	Cords		
	B. T. Aspen		14	Cords		
	Quaking Aspen		85	Cords		
	Mixed Oak		90	Cords		
	Northern Pin Oak		89	Cords		
	White Oak		1	Cords		
	Paper Birch		9	Cords		
	Red Maple		276	Cords		
2	Mixed Aspen	Sawtimber	13.3	MBF	88.0	\$60,238.65
	Quaking Aspen		13.3	MBF		
	Mixed Oak		98.9	MBF		
	Northern Pin Oak		97.8	MBF		
	White Oak		1.1	MBF		
	Red Maple		19.3	MBF		
	Red Pine		69.4	MBF		
	Black Cherry		25	Cords		
	Black Cherry		25	Cords		
	Mixed Aspen		361	Cords		
	B. T. Aspen		193	Cords		
	Quaking Aspen		168	Cords		
	Mixed Oak		330	Cords		
	Northern Pin Oak		276	Cords		
	White Oak		54	Cords		
	Paper Birch		48	Cords		
	Red Maple		415	Cords		
	Red Pine		216	Cords		
3	Mixed Aspen	Sawtimber	22.0	MBF	44.1	\$29,387.95
	B. T. Aspen		13.7	MBF		
	Quaking Aspen		8.3	MBF		
	Mixed Oak		86.8	MBF		
	Northern Pin Oak		85.3	MBF		
	White Oak		1.5	MBF		
	Red Maple		76.8	MBF		
	Black Cherry		26	Cords		
	Black Cherry		6.6	MBF		
	Black Cherry		13	Cords		
	Mixed Aspen		71	Cords		
	B. T. Aspen		42	Cords		
	Quaking Aspen		29	Cords		
	Mixed Oak		230	Cords		
	Northern Pin Oak		228	Cords		
	White Oak		2	Cords		
	Red Maple		282	Cords		
	4		Mixed Aspen	Sawtimber		
B. T. Aspen		21.8	MBF			
Mixed Oak		2.5	MBF			
White Oak		2.5	MBF			
Mixed Aspen		366	Cords			
B. T. Aspen		366	Cords			

DESCRIPTION OF TIMBER BY PU (PU), CON'T

PU	MARKET GROUP	PRODUCT	QUANTITY	UNIT	ACRES	ADVERTISE PRICE
4 con't	Mixed Oak	Pulpwood	78	Cords		
	<i>Northern Pin Oak</i>		76	<i>Cords</i>		
	<i>White Oak</i>		2	<i>Cords</i>		
	Paper Birch		14	Cords		
	Red Maple		173	Cords		
TOTAL:			478.7	MBF		
TOTAL:			3,112	Cords		

Sale Specific Conditions & Requirements

Sale Name: Eastman Dustbowl

Sale Number: 73-008-22 Seq#: 1

1 - Sale Area

1.2 - Boundaries

1.2.1 - Painted boundaries (9/19)

The sale boundary and Payment Unit boundaries are marked and identified by blue, red and yellow paint. Exterior sale boundary lines against private property are marked with blue paint. Exterior sale boundary lines against state are marked with red paint. The eastern sale boundary on payment unit #'s 1, 3 & 4 are unmarked and designated by Eastman road. Interior Payment Unit boundaries are marked with yellow paint. Retention patches are marked with red paint; no harvesting activities may occur within these areas. The painted boundary line trees are not Included Timber and are to be protected unless marked with orange paint. Yellow painted trees designating an interior Payment Unit boundary are only to be cut when all surrounding Payment Units have been paid.

2 - Timber Specifications

2.1 - Included Timber

2.1.1 - Clearcut unit(s) with unmerchantable trees (6/14)

Within Payment Unit(s) 2, 3 and 4, cut all trees that are two (2) inches or more at DBH except for oak marked with green paint above and below stump height.

2.1.7 - Leave tree marked unit(s) (6/14)

Within Payment Unit(s) 1, cut all trees that are two (2) inches or more at DBH except trees marked with green paint above and below stump height.

2.1.15 - Hazard trees near roads (11/20)

Cut and remove all standing dead trees within 100 feet of the cleared portion of Eastman road. These trees may be utilized or must be scattered back into the sale area.

2.2 - Utilization

2.2.6 - Roundwood operation required (3/21)

The skidding of whole trees or tree segments with limbs attached is prohibited within Payment Unit 1. All products must be produced as roundwood and forwarded to existing roads or landing areas in final product length.

3 - Payments

3.3 - Pre-measured Sales

3.3.4 - Dividing payment units (7/14)

Payment Unit(s) may be divided at the request of the Purchaser and upon approval of the Unit Manager. Dividing Payment Units is a contract modification which requires a Timber Sale Contract Amendment. There will be only one division per Payment Unit.

3.4 - Damaged Timber

3.4.1 - Damaged timber (7/16)

General Condition and Requirement 3.4 Damaged Timber, defines liquidated damages for undesignated live merchantable trees which are cut or injured. No damage is acceptable to undesignated live merchantable trees. Within the sale area, if more than 10% of trees (> 4.5" DBH) within a specified area of the sale are damaged, liquidated damages will be assessed for all trees damaged. Rates will be in accordance with General Condition and Requirement 3.4 Damaged Timber.

4 - Transportation

4.1 - Construction

4.1.6 - Road construction (1/09)

Construction of new roads or improvements of existing roads shall be done in such a way as to minimize the environmental and visual impacts. Merchantable trees shall be cut and utilized unless otherwise directed. Non-merchantable trees shall be severed and laid flat on the ground. Slash shall be scattered, and not left in windrows and kept a minimum of 10 feet back from the road edge. Stumps shall be set upright, not left on edge, and be moved at least 10 feet away from the road edge. Disturbed soil shall be feathered into the woods and not left in berms or windrows.

4.1.7 - Road closure (10/11)

All new roads built into the sale must be blocked to vehicle traffic upon completion of the sale. Overgrown roads that are reopened shall be considered new roads. In general, this will require constructing a four (4') foot high berm of stumps and logs covered with earth. Stumps and brush must be placed along the remainder of the trail. These roads must be rendered impassable to cars and trucks. Contact the sale administrator for specific details of design and placement.

5 - Operations

5.1 - Notification

5.1.1 - Pre-sale conference (10/16)

A pre-sale conference on site between the Purchaser and sale administrator is required prior to beginning any operations to determine landing and road locations. The Unit Manager or his/her representative must be contacted at least 2 business days in advance to schedule the conference.

5.2 - Conduct of Operations

5.2.2 - Hazard Trees/Snags

5.2.2.1 - Den trees (10/16)

Obvious hollow and/or den trees shall be protected and left standing unless they are a safety hazard.

5.2.3 - Operating Restrictions

5.2.3.4 - Oak wilt restriction, no exceptions (1/18)

Within Payment Unit 1, cutting, skidding, hauling within the sale and brushing of access roads to the sale are not permitted during the period of April 15 to July 15. No exceptions will be granted. This is necessary to reduce the spread of oak wilt.

5.2.3.5 - Oak wilt restriction (1/18)

Within Payment Unit 3, unless changed by written agreement, cutting, skidding, hauling within the sale and brushing of access roads to the sale are not permitted during the period of April 15 to July 15. Operations may be allowed if specific steps are taken to prevent damaging uncut oak during the high risk period. Those steps may include completing all road brushing before April 15th and clearing a tree-length buffer along uncut oak cover before April 15th. This is necessary to reduce the spread of oak wilt. For more information, contact the Unit Manager or his/her representative.

5.2.4 - Dead and Down Creation

5.2.4.4 - Dead and down creation, grouse (6/18)

To encourage grouse and other wildlife, in Payment Unit(s) 2 & 4, leave one 12" or larger diameter whole tree on the ground for every 3 acres. Trees should be scattered throughout the sale and at least two chains from any roads, two-tracks, or trails open to vehicles, or positioned per the sale administrators instructions. Stumps must be at least 3 feet tall.

5.2.22 - Operating Caution

5.2.22.1 - Operating caution (6/11)

It is recommended, but not required, that within Payment Unit(s) 1-4, cutting, skidding, and hauling occur during dry summer or frozen winter conditions. The reason for the recommendation is because of saturated soils.

5.2.32 - Decking/landing restoration (9/13)

All decking and landing areas must have the surface area restored to a condition equal to or better than before. This is to ensure the proper regeneration of the stand. Wood debris, chips and "cookies" from trimmings must be removed or scattered away from landing and loading areas and may not be windrowed on the edge.

5.2.39 - ORV trail/route protection (4/18)

The Midland to Mackinaw is an ORV trail route and is shown on the Timber Sale Map. Do not cut or damage trees with blue paint. Maintain a 20 foot wide slash, debris, and rut free zone daily using the ORV trail or route as the centerline.

6 - Safety and Fire Prevention

6.2 - Signing

6.2.1 - Road posting (10/20)

The Purchaser is responsible for posting and maintaining caution signs on Eastman road prior to beginning operations. The road must be posted at appropriate distances from the sale area to warn of logging activity and truck traffic. Signs must be removed when harvest operations are suspended or completed. The Purchaser will provide these signs.

6.2.3 - Recreational trail posting (10/20)

The Purchaser is responsible for posting and maintaining caution signs on the Midland to Mackinac boy scout trail prior to beginning operations. The trail must be posted at appropriate distances from the sale area to warn of logging activity and truck traffic at both ends of the trail. Signs must be removed when harvest operations are suspended or completed. The Purchaser will provide these signs.



TIMBER SALE MAP

This information provided by authority of Part 525, 1994 PA 451, as amended.

Sale Number	Year
73 - 008	22

Forest Management Unit	County	Mapped By	Date	Page of
Gladwin	Gladwin	Behrmann	09/26/2022	1 of 2
Township	Range	Section(s) and Subdivision(s)	Scale	
17 & 18N	02E	18N 02E Sec 29 S1/2, S1/2NE Sec 30 S1/2SE, 17N 02E Sec 5 NE	1:15,840	

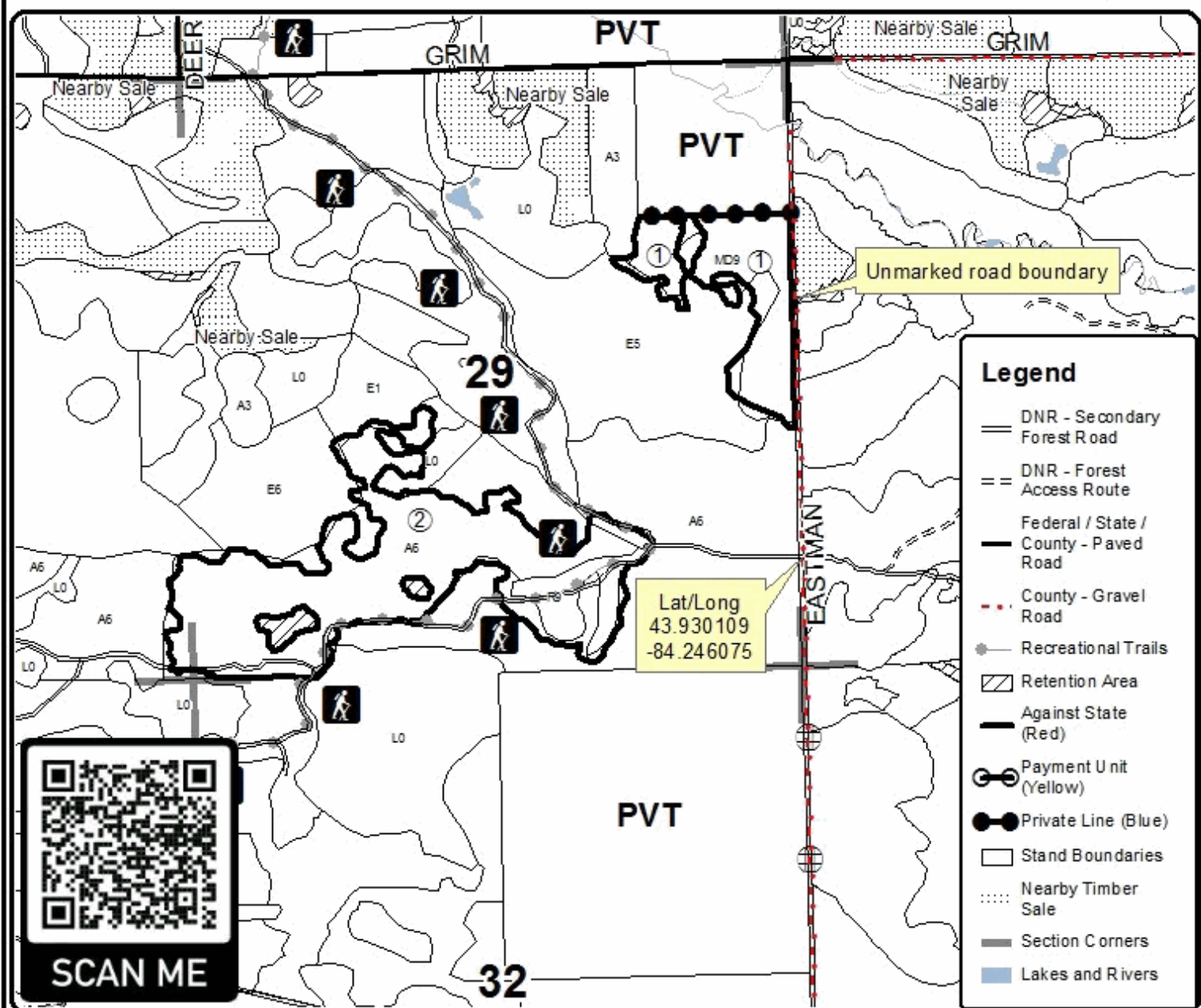
Cover Type				Density	
A = Aspen	H = Hemlock	N = Marsh	U = Upland Brush	0 = Non Stocked	5 = Pole Timber Medium
B = Paper Birch	J = Jack Pine	O = Oak	UM = Upland Mixed	1 = Seedling Sapling Poor	6 = Pole Timber Well
C = Cedar	L = Lowland Brush	P = Lowland Poplar	V = Bog or Marsh	2 = Seedling Sapling Medium	7 = Saw Timber Poor
D = Tired Bog	LM = Lowland Mixed	Q = Mixed Swamp Conifer	W = White Pine	3 = Seedling Sapling Well	8 = Saw Timber Medium
E = Swamp Hardwoods	M = Mpl, Bch, Brch	R = Red Pine	X = Non Stocked	4 = Pole Timber Poor	9 = Saw Timber Well
F = Spruce Fir	MC = Mixed Conifer	S = Black Spruce	Z = Water		
G = Grass	MD = Mixed Deciduous	T = Tamarack			

PU	Acres	PU	Acres
1	28.4	3	44.1
2	88	4	22.7

Eastman Dustbowl

Compartment 79

183.2 Acres



Legend

- DNR - Secondary Forest Road
- DNR - Forest Access Route
- Federal / State / County - Paved Road
- County - Gravel Road
- Recreational Trails
- Retention Area
- Against State (Red)
- Payment Unit (Yellow)
- Private Line (Blue)
- Stand Boundaries
- Nearby Timber Sale
- Section Corners
- Lakes and Rivers

0 0.125 0.25 0.5 0.75 1 Miles



TIMBER SALE MAP

This information provided by authority of Part 525, 1994 PA 451, as amended.

Sale Number	Year
73 - 008	22

Forest Management Unit	County	Mapped By	Date	Page of
Gladwin	Gladwin	Behrmann	09/26/2022	2 of 2
Township	Range	Section(s) and Subdivision(s)	Scale	
17 & 18N	02E	18N 02E Sec 29 S1/2, S1/2NE Sec 30 S1/2SE, 17N 02E Sec 5 NE	1:15,840	

Cover Type				Density	
A = Aspen	H = Hemlock	N = Marsh	U = Upland Brush	0 = Non Stocked	5 = Pole Timber Medium
B = Paper Birch	J = Jack Pine	O = Oak	UM = Upland Mixed	1 = Seedling Sapling Poor	6 = Pole Timber Well
C = Cedar	L = Lowland Brush	P = Lowland Poplar	V = Bog or Marsh	2 = Seedling Sapling Medium	7 = Saw Timber Poor
D = Tired Bog	LM = Lowland Mixed	Q = Mixed Swamp Conifer	W = White Pine	3 = Seedling Sapling Well	8 = Saw Timber Medium
E = Swamp Hdwoods	M = Mpl, Boh, Brch	R = Red Pine	X = Non Stocked	4 = Pole Timber Poor	9 = Saw Timber Well
F = Spruce Fir	MC = Mixed Conifer	S = Black Spruce	Z = Water		
G = Grass	MD = Mixed Deciduous	T = Tamarack			

PU	Acres	PU	Acres
1	28.4	3	44.1
2	88	4	22.7

Eastman Dustbowl

Compartment 79

183.2 Acres

