



**DEPARTMENT OF NATURAL RESOURCES  
STATE OF MICHIGAN  
TIMBER SALE PROSPECTUS #7188**

**SCHEDULED SALE DATE AND TIME: 9:00 a.m. (local time) on February 21, 2023.**

**LOCATION: GAYLORD MGMT UNIT, 1732 WEST M 32, GAYLORD, MI 49735.**

**CONTACT NAME: Lucas Merrick**

**PHONE NUMBER: (989) 732-3541**

**PROSPECTUS NOTE:** All bid openings for the Gaylord Management Unit (Gaylord Field Office and Indian River Field Office) will be held at the Gaylord Field Office regardless of sale location within the unit. All payments and contract executions will now be handled through the Gaylord Field Office. The Indian River Field Office will no longer accept payments or hard paper copies of timber sale bids. Payments for all contracts, use permits, bonds, etc. should be sent to the Gaylord Field Office.

The bidder is advised to inspect the sale area and review the location, estimated volumes, operating costs and contract terms of proposed sales. Please be aware that some landowners may request 60 days or more notice for access across their land.

Notice is hereby given that bids will be received by the Unit Manager, GAYLORD MANAGEMENT UNIT, for certain timber on the following described lands:

Carouselambra Red Pine (52-120-22) / T37N, R06W, SEC. 26, NENW,S1/2NW,W1/2NE,N1/2SW.

T37N, R06W, SEC. 36, N1/2NE,SENE.

Emmet County, Advertised Price \$119,929.20, 106.2 Acres, Hardwood, Red Pine.

SALE NOTE: Seasonal restrictions and HRD guidelines applied.

A recreation site such as a trail, pathway, or campground is within the sale area or the vicinity.  
Certain restrictions/specifications may be applicable including time restrictions.

## TIMBER SALE INFORMATION

Carouselambra Red Pine (52-120-22)  
T37N, R06W, SEC. 26; T37N, R06W, SEC. 36.  
Emmet County (Advertised Price \$119,929.20)

SALE NOTE: Seasonal restrictions and HRD guidelines applied.

A recreation site such as a trail, pathway, or campground is within the sale area or the vicinity. Certain restrictions/specifications may be applicable including time restrictions.

A timber sale contract for this lump sum, sealed bid timber sale will be awarded to the responsible bidder offering the highest sealed bid price. All units of volume listed below were estimated using the Inventory Manager computer program and the new Michigan taper model. Bids must be at or above the following advertised price for each product and species:

<u>PRODUCTS &amp; SPECIES</u>	<u>ESTIMATED UNITS*</u>	<u>ADVERTISED PRICE</u>
Sawtimber		
Red Pine	568.0 MBF	\$ 140.00 / MBF
Pulpwood		
Black Cherry	6 Cords	\$ 16.55 / Cord
Red Pine	776 Cords	\$ 51.15 / Cord
Scotch Pine	50 Cords	\$ 12.35 / Cord

\* The total volume is statistically estimated within plus (+) or minus (-) 17.39 percent. There are an estimated 2,163 cords on this timber sale, plus or minus 376 cords at the 95% confidence level. The estimated units are final and not subject to adjustment. Prospective bidders are urged to examine this timber and to make their own estimates of quantity and quality.

### **BOND AND PAYMENT SCHEDULE:**

1. A bond in the amount of \$5,996.46 to insure faithful performance of the conditions of the contract will be deposited by the successful bidder within 21 days of the sale award.
2. Cutting in any sale or unit without the required advance payment would be considered a trespass.
3. Total payment must be paid in advance or according to the following schedule:
  - (a) Ten percent (10%) of the sale value must be paid within 21 days of the sale award.
  - (b) The 10% down payment will be credited towards the first unit cut.
  - (c) Payment for each of the following units must be made before cutting begins in that unit:

PAYMENT UNIT NUMBER	PERCENT OF TOTAL SALE VALUE
01	22.1%
02	19.9%
03	0.7%
04	14.9%
05	42.4%
4. If no cutting takes place, the 10% down payment will not be refunded.
5. Operations on the contract issued will terminate on 03/31/2026.

### **SALE STATISTICS**

Volumes were calculated in cubic feet using the Michigan taper model. Cubic foot volume includes all wood inside bark for the product indicated. For display purposes, cubic feet were converted to cords and MBF using a simple conversion factor, e.g. 79 cubic feet per cord and 185 cubic feet per MBF. The cubic foot volumes are precise; the cords and MBF volumes are not. Cubic foot volume cannot be directly converted to cords or boards with precision.

### **SALE VOLUMES**

The total estimated sale volume may not equal the sum of the species/products due to the nature of statistical calculations associated with double sampling methodology.

VOLUME			STATISTICAL RANGE IN CORDS	
TOTAL CUBIC FEET	TOTAL CORDS	PERCENT ERROR	MINIMUM	MAXIMUM
170,864	2,163	17.39%	1,787	2,539

## VDU VOLUMES

A VDU is a Volume Determination Unit. Volumes and their associated statistics are calculated at the VDU level and summarized to the sale level. There is often a one to one relationship between a VDU and a Payment Unit, but not always, depending on the cruise design. Refer to the VDU TO PAYMENT UNIT table.

	VOLUME			RANGE IN CORDS	
VDU	TOTAL CUBIC FEET	TOTAL CORDS	PERCENT ERROR	MINIMUM	MAXIMUM
14	3,411	43	53.40%	20	66
17	27,226	345	20.88%	273	417
59	69,394	878	28.50%	628	1,129
119	70,833	897	21.88%	700	1,093
<b>TOTAL:</b>	<b>170,864</b>	<b>2,163</b>		<b>1,621</b>	<b>2,704</b>

## VDU TO PAYMENT UNIT

When a VDU is associated with more than one Payment Unit (PU), the VDU volumes are assigned to the PU based on acres of the VDU within the PU.

VDU	VDU ACRES	PU	PU ACRES
14	12.2	3	12.2
17	22.7	4	22.7
59	30.8	5	30.8
119	40.5	1	21.3
		2	19.2
<b>TOTAL:</b>	<b>106.2</b>		<b>106.2</b>

## DESCRIPTION OF TIMBER BY PU (PU)

PU	MARKET GROUP	PRODUCT	QUANTITY	UNIT	ACRES	ADVERTISE PRICE
1	Red Pine	Sawtimber	116.9	MBF	21.3	\$26,493.70
	Red Pine	Pulpwood	198	Cords		
2	Red Pine	Sawtimber	105.3	MBF	19.2	\$23,846.70
	Red Pine	Pulpwood	178	Cords		
3	Black Cherry	Pulpwood	6	Cords	12.2	\$866.65
	Red Pine		8	Cords		
	Scotch Pine		29	Cords		
4	Red Pine	Sawtimber	51.9	MBF	22.7	\$17,857.65
	Red Pine	Pulpwood	202	Cords		
	Scotch Pine		21	Cords		
5	Red Pine	Sawtimber	293.9	MBF	30.8	\$50,864.50
	Red Pine	Pulpwood	190	Cords		
<b>TOTAL:</b>			<b>568.0</b>	<b>MBF</b>		
<b>TOTAL:</b>			<b>832</b>	<b>Cords</b>		

## **Sale Specific Conditions & Requirements**

**Sale Name: Carouselambra Red Pine**

**Sale Number: 52-120-22 Seq#: 1**

### **1 - Sale Area**

#### **1.2 - Boundaries**

##### **1.2.1 - Painted boundaries (9/19)**

The sale boundary and Payment Unit boundaries are marked and identified by blue, red and yellow paint. Exterior sale boundary lines adjacent to private property are marked with blue paint. Exterior sale boundary lines adjacent to state-owned land are marked with red paint. Interior Payment Unit boundaries are marked with yellow paint. Retention patches are marked with red paint; no harvesting activities may occur within these areas. The painted boundary line trees are not Included Timber and are to be protected unless marked with orange paint. Yellow painted trees designating an interior Payment Unit boundary are only to be cut when all surrounding Payment Units have been paid.

### **2 - Timber Specifications**

#### **2.1 - Included Timber**

##### **2.1.1 - Clearcut unit(s) with unmerchantable trees (6/14)**

Within Payment Unit(s) 3, cut all trees that are two (2) inches or more at DBH, regardless of merchantability, except do not cut apple, oak, or juneberry trees.

##### **2.1.3 - Cut tree marked unit(s) (12/08)**

Within Payment Unit(s) 1, 2, and 5, all red pine trees are designated for cutting when marked with orange paint above and below stump height, regardless of merchantability. Any mixed hardwood, aspen, or white pine trees that restrict the movement of harvest equipment may be felled and left as coarse woody debris. Do not cut any apple, oak, or juneberry trees.

##### **2.1.8 - Designated plantation row unit(s) (12/08)**

Within Payment Unit(s) 4, all red pine trees which meet minimum piece specifications in 2.2 Utilization, within designated plantation rows are designated for cutting. Designated plantation rows begin with the third row in from the outside of the plantation along the south boundary line, then continue every third row. Because of the variability of row direction, it shall be the responsibility of the producer to maintain the third row sequence. In addition, cut all scotch pine found within the sale boundary regardless of merchantability.

#### **2.2 - Utilization**

##### **2.2.2 - Chipping required (2/18)**

Payment Unit 3 must be chip harvested to facilitate subsequent planting operations. Products may be produced as roundwood and forwarded to decking areas in final product length, but the tops must be left intact and skidded to the landing for chipping in order to minimize the amount of residual slash. If market conditions limit the practicality of chipping, tops and slash must be arranged in a way that will not inhibit future planting operations, as directed by the sale administrator. The requirement to retain approximately 1/6 to 1/3 of tree tops and limbs less than four inches in diameter does not apply (G. C. & R. 2.2). This is because future site prep and planting activities.

##### **2.2.3 - Stump heights (4/07)**

Stump heights within the Sale Area shall not exceed 6 inches for all trees. This is in order to facilitate future planting operations.

### **3 - Payments**

#### **3.3 - Pre-measured Sales**

##### **3.3.4 - Dividing payment units (7/14)**

Payment Unit(s) may be divided at the request of the Purchaser and upon approval of the Unit Manager. Dividing Payment Units is a contract modification which requires a Timber Sale Contract Amendment. There will be only one division per Payment Unit.

### 3.4 - Damaged Timber

#### 3.4.1 - Damaged timber (7/16)

General Condition and Requirement 3.4 Damaged Timber, defines liquidated damages for undesignated live merchantable trees which are cut or injured. No damage is acceptable to undesignated live merchantable trees. Within the sale area, if more than 5% of trees (> 4.5" DBH) within a specified area of the sale are damaged, liquidated damages will be assessed for all trees damaged. Rates will be in accordance with General Condition and Requirement 3.4 Damaged Timber.

## 4 - Transportation

### 4.1 - Construction

#### 4.1.3 - Slash and earthen piles (8/04)

Piles or windrows of earth along roads and landings that have been widened or constructed shall be leveled. Slash from road maintenance or construction, including stumps, shall be dispersed throughout the sale, chipped, utilized or otherwise removed from the sale.

#### 4.1.6 - Road construction (1/09)

Construction of new roads or improvements of existing roads shall be done in such a way as to minimize the environmental and visual impacts. Merchantable trees shall be cut and utilized unless otherwise directed. Non-merchantable trees shall be severed and laid flat on the ground. Slash shall be scattered, and not left in windrows and kept a minimum of 10 feet back from the road edge. Stumps shall be set upright, not left on edge, and be moved at least 10 feet away from the road edge. Disturbed soil shall be feathered into the woods and not left in berms or windrows.

#### 4.1.7 - Road closure (10/11)

All new roads built into the sale must be blocked to vehicle traffic upon completion of the sale. Overgrown roads that are reopened shall be considered new roads. In general, this will require constructing a four (4') foot high berm of stumps and logs covered with earth.

### 4.2 - Maintenance

#### 4.2.5 - Two wheel drive condition (2/04)

All existing trail roads on and adjacent to the sale area must be passable by two-wheel drive traffic for the duration of the sale.

### 4.3 - Public Right-of-Way

#### 4.3.2 - County R-O-W (12/06)

The county must be contacted prior to crossing or harvesting in the county road R-O-W.

## 5 - Operations

### 5.1 - Notification

#### 5.1.1 - Pre-sale conference (10/16)

A pre-sale conference between the Purchaser and sale administrator is required prior to beginning any operations to determine landing and road locations.

### 5.2 - Conduct of Operations

#### 5.2.1 - Slash

##### 5.2.1.1 - Slash within sale area (9/16)

No trees are to be felled outside the sale area and all slash is to be kept at least 10 feet back from the red or blue paint line. If sale boundary lines are along a public road or highway, then slash must be removed 50' from these lines per General Condition & Requirement 5.2.1.

##### 5.2.1.11 - Slash for reforestation (3/21)

Within Payment Unit 3, chipping is required, as it is the most effective and efficient way to mitigate slash for reforestation. Other tactics to mitigate slash for site preparation would need to be approved by the Unit Manager or his/her representative. Liquidated damages may be assessed at \$250 per acre if it is determined that slash mitigation was

inadequate and mastication is needed for the DNR to conduct site preparation for planting.

### 5.2.3 - Operating Restrictions

#### 5.2.3.3 - Bark slippage restriction (3/09)

Within Payment Unit(s) 1, 2, 4, and 5, unless changed by written agreement, cutting and skidding are not permitted during the period of April 15 to July 15. This restriction is because of bark slippage.

#### 5.2.3.6 - Bark beetle restriction (12/08)

In the event drought creates a high risk of pine bark beetle infestation, pine is not to be cut during the period March 1 through July 1, unless all portions of trees greater than two inches in diameter are removed from the sale area, reduced to chips, or treated to the satisfaction of the Unit Manager or his/her representative, within fifteen days of being severed from the stump. Pine log decks, pulpwood piles and treetops that are piled for chipping in the fall or winter within a 1/4 mile of susceptible sites must be removed before March 15. Residual slash must not be placed in piles or rows and must be spread over the site for quick drying. The Department of Natural Resources will exercise this specification if the risk of damage warrants.

#### 5.2.3.14 - heterobasidion root disease (HRD) (3/21)

This plantation is at risk of infection by the root rot fungus, *Heterobasidion irregulare*. To prevent the spread of this disease, cutting operations within Payment Unit(s) 1, 2, 4, and 5 are restricted to the period of January 1st through February 28th. Cutting may only occur outside this period with written permission of the Unit Manager or with the application of a preventative pesticide. Consultation with a forest health specialist will determine if cutting can occur prior to January 1 without pesticide application, dependent upon current and forecasted snow cover. Cellu-Treat and RotStop C are currently the only EPA registered products available in the United States for the control of *Heterobasidion*. Both products are a water-soluble powder that must be applied to the stump, in accordance with the product label. Dye must be added to these products to provide visible evidence of adequate coverage. Application of these pesticides requires licensing by the Michigan Department of Agriculture and Rural Development. All applicators are required to: provide to the Sale Administrator notification of application per requirements in 40 CFR 170.120; and document and provide to the Sale Administrator annually, by December 31 and prior to closure of sale, the volume of product used and acres treated.

#### 5.2.32 - Decking/landing restoration (9/13)

All decking and landing areas must have the surface area restored to a condition equal to or better than before. This is to ensure the proper regeneration of the stand. Wood debris, chips and "cookies" from trimmings must be removed or scattered away from landing and loading areas and may not be windrowed on the edge.

#### 5.2.40 - Pathway protection (10/10)

The NC Pathway hiking trail is shown on the Timber Sale Map. Do not cut trees or damage posts with blue pathway markers. Maintain a 20-foot wide slash, debris, and rut free zone daily, using the pathway as the centerline. Do not run equipment down the pathway.

#### 5.2.41 - Snowmobile trail protection (9/11)

The snowmobile trail is shown on the Timber Sale Map. Do not cut or damage posts with orange trail markers or traffic control signs. If the trail is used, it must be maintained and restored to a condition equal to or better than before the sale. If the trail is used for hauling, it must be graded to the satisfaction of the Unit Manager or his/her representative prior to December 1st. The snowmobile trail may not be used for any timber sale operations from December 1 to March 31. Maintain a 20 foot wide slash, debris, and rut free zone daily using the snowmobile trail as the centerline. No decking of forest products will be permitted along the snowmobile trail. All stumps within 10 feet of the snowmobile trail must be cut at ground level.

### 5.4 - Soil Protection

#### 5.4.1 - Rutting restriction, general (7/16)

Operations are to cease immediately if equipment and weather conditions result in rutting of roads which is 12 inches or greater in depth and 50 feet in length. The Unit Manager or his/her representative may restrict hauling and/or skidding if ruts exceed the specified depth. With the Unit Manager or his/her representative's approval, the Purchaser may return to the area when the risk of rutting has decreased.

### 5.8 - Protection of Endangered Species

#### 5.8.5 - Protection of raptor nests (3/13)

All trees with raptor nests will be protected if found during harvesting operations. Notification will be made to the Unit Manager or his/her representative who will notify the Wildlife Biologist so an on-site evaluation and recommendation can be made, if necessary.

## 6 - Safety and Fire Prevention

### 6.2 - Signing

#### 6.2.1 - Road posting (10/20)

The Purchaser is responsible for posting and maintaining caution signs on Robinson, Van, and State roads prior to beginning operations. The road must be posted at appropriate distances from the sale area to warn of logging activity and truck traffic. Signs must be removed when harvest operations are suspended or completed. The Purchaser will provide these signs.

#### 6.2.2 - Snowmobile trail posting (10/20)

The Purchaser is responsible for posting and maintaining caution signs on the snowmobile trail prior to beginning operations during the snowmobile season (approximately December 1 to March 31). The trail must be posted at appropriate distances from the sale area to warn of logging activity and truck traffic. Signs must be removed when harvest operations are suspended or completed. The Purchaser will provide these signs.

#### 6.2.3 - Recreational trail posting (10/20)

The Purchaser is responsible for posting and maintaining caution signs on the North Country Pathway hiking trail prior to beginning operations. The trail must be posted at appropriate distances from the sale area to warn of logging activity and truck traffic at both ends of the trail. Signs must be removed when harvest operations are suspended or completed. The Purchaser will provide these signs.

# TIMBER SALE MAP

*This information provided by authority of Part 525, 1994 PA 451, as amended.*

Sale Number	Year
52-120-22	2022

52-120-22

2022

Forest Management Unit		County	Mapped By	STACKS	Date	Page	of
GAYLOAD-NORTH		EMMET.	Cruised By	STACKS	09/28/22	1	2
Township	Range	Section(s) and Subdivision(s)					
T37N	RO6W	26 S 1/2 NW, NENW, W 1/2 NE, N 1/2 SW; 36 SENE, N 1/2 NE					
Cover Type					Density		
A = Aspen B = Paper Birch C = Cedar D = Treed Bog E = Swamp Hardwoods F = Spruce/Fir G = Grass H = Hemlock J = Jack Pine K = Rock L = Lowland Brush LM = Lowland Mix Forest M = Maple, Beech, Birch MC = Mixed Conifer MD = Mixed Deciduous N = Marsh O = Oak P = Lowland Poplar Q = Mixed Swamp Conifer R = Red Pine S = Black Spruce T = Tamarack					U = Upland Brush UM = Upland Mix Forest V = Bog or Marsh W = White Pine X = Non Stocked Y = Sand Z = Water 0 = Non Stocked 1 = Seedling Sapling Poor 2 = Seedling Sapling Medium 3 = Seedling Sapling Well 4 = Pole Timber Poor 5 = Pole Timber Medium 6 = Pole Timber Well 7 = Saw Timber Poor 8 = Saw Timber Medium 9 = Saw Timber Well		
					1:15,840		

COMPARTMENT 105

CAROUSELAMBRA RED PINE

P.O. . . . . ACRES

106.2 ACRES

1 . . . . . 21.3

EMMET COUNTY

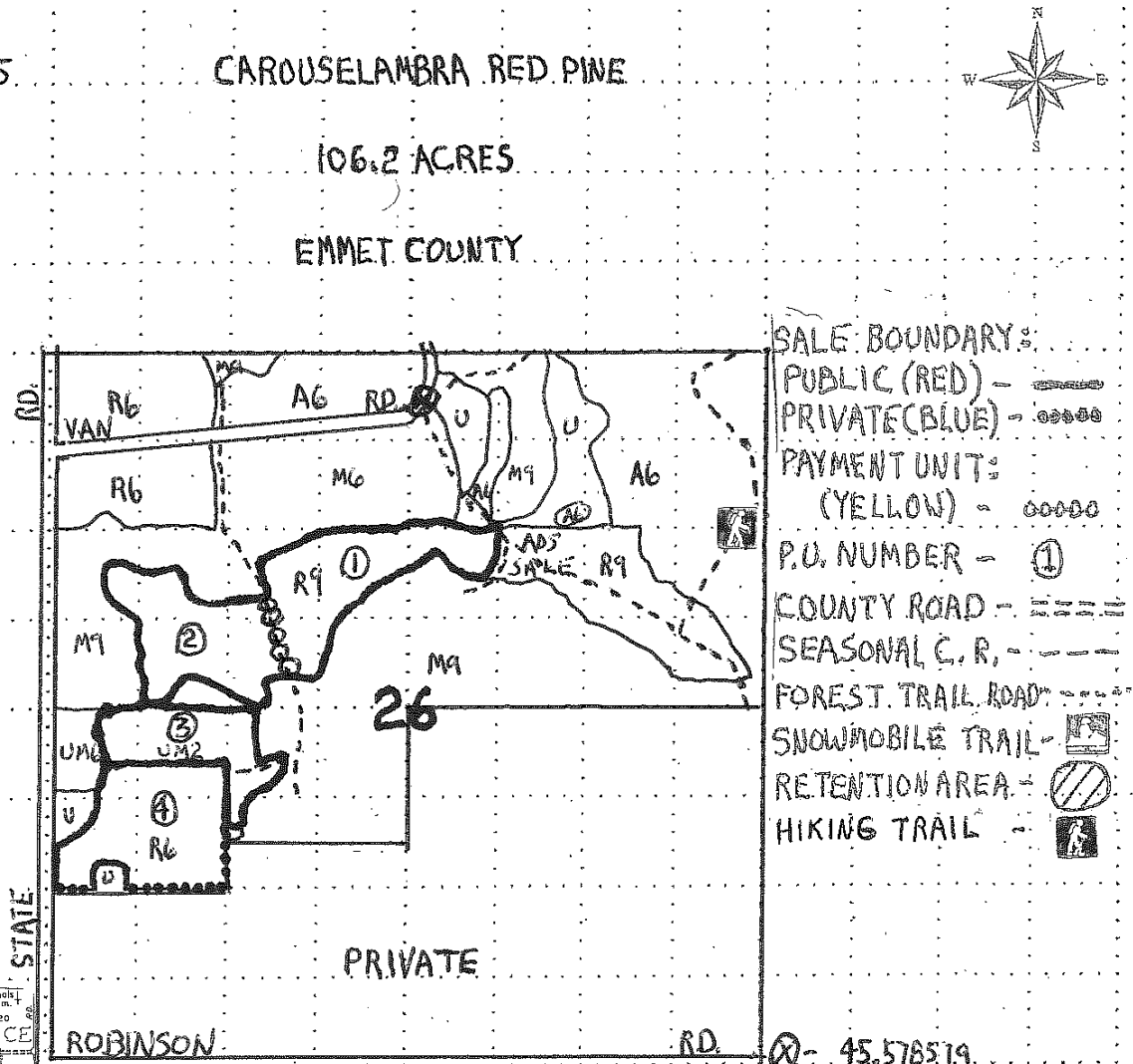
2 - 192

3 - 12.2

4 - 22.7

5 - 30.8

1.0.6.2



SALE BOUNDARY:

PUBLIC (RED) - ~~SECRET~~

PRIVATE (BLUE) - 100000

PAYMENT UNIT

(YELLOW) ~ 00000

PI NUMBER - 1

COUNTY ROAD

COUNTY ROAD

SEASONAL C. R. - - -

FOREST TRAIL ROAD

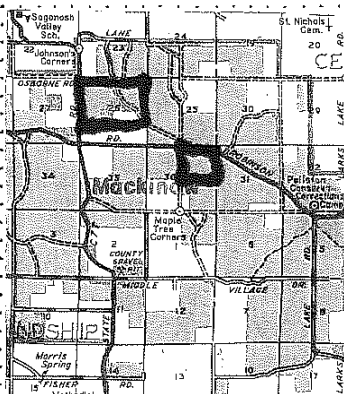
SNOWMOBILE TRAIL- 

RETENTION AREA = 

HIKING TRAIL

⑩- 45.578519.

- 85.005743



0.5                      0.25                      0 Miles



