



**DEPARTMENT OF NATURAL RESOURCES
STATE OF MICHIGAN
TIMBER SALE PROSPECTUS #7235**

SCHEDULED SALE DATE AND TIME: **3:00 p.m. (local time) on June 21, 2023.**

LOCATION: **BALDWIN OFFICE, 2468 W 24TH STREET, BALDWIN, MI 49304.**

CONTACT NAME: David Flsher

PHONE NUMBER: (231) 745-4651

PROSPECTUS NOTE: The bidder is advised to inspect the sale area and review the location, estimated volumes, operating costs and contract terms of proposed sales. Please be aware that some landowners may request 60 days or more notice for access across their land.

Notice is hereby given that bids will be received by the Unit Manager, CADILLAC MANAGEMENT UNIT, for certain timber on the following described lands:

Frank's Myth Pine (63-025-22) / T18N, R11W, SEC. 5 , S1/2SE.

T18N, R11W, SEC. 8 , NW,NE.

T19N, R11W, SEC. 31, NW.

Lake County, Advertised Price \$230,545.10, 117.3 Acres, Aspen, Red Pine.

TIMBER SALE INFORMATION

Frank's Myth Pine (63-025-22)

T18N, R11W, SEC. 5; T18N, R11W, SEC. 8; T19N, R11W, SEC. 31.

Lake County (Advertised Price \$230,545.10)

A timber sale contract for this lump sum, sealed bid timber sale will be awarded to the responsible bidder offering the highest sealed bid price. All units of volume listed below were estimated using the Inventory Manager computer program and the new Michigan taper model. Bids must be at or above the following advertised price for each product and species:

<u>PRODUCTS & SPECIES</u>	<u>ESTIMATED UNITS*</u>	<u>ADVERTISED PRICE</u>
Sawtimber		
B. T. Aspen	686.2 MBF	\$ 110.00 / MBF
Black Cherry	40.2 MBF	\$ 213.00 / MBF
Black/Red (Hybrid) Oak	30.0 MBF	\$ 110.00 / MBF
Red Maple	103.0 MBF	\$ 95.00 / MBF
Red Oak	48.6 MBF	\$ 193.00 / MBF
Red Pine	324.5 MBF	\$ 101.00 / MBF
White Pine	113.6 MBF	\$ 96.00 / MBF
Pulpwood		
B. T. Aspen	438 Cords	\$ 31.25 / Cord
Black Cherry	24 Cords	\$ 22.80 / Cord
Black/Red (Hybrid) Oak	16 Cords	\$ 28.60 / Cord
Red Maple	123 Cords	\$ 22.80 / Cord
Red Oak	90 Cords	\$ 28.60 / Cord
Red Pine	912 Cords	\$ 46.70 / Cord
White Pine	823 Cords	\$ 21.50 / Cord

* The total volume is statistically estimated within plus (+) or minus (-) 19.08 percent. There are an estimated 5,405 cords on this timber sale, plus or minus 1,031 cords at the 95% confidence level. The estimated units are final and not subject to adjustment. Prospective bidders are urged to examine this timber and to make their own estimates of quantity and quality.

BOND AND PAYMENT SCHEDULE:

1. A bond in the amount of \$11,527.26 to insure faithful performance of the conditions of the contract will be deposited by the successful bidder within 21 days of the sale award.
2. Cutting in any sale or unit without the required advance payment would be considered a trespass.
3. Total payment must be paid in advance or according to the following schedule :
 - (a) Ten percent (10%) of the sale value must be paid within 21 days of the sale award.
 - (b) The 10% down payment will be credited towards the first unit cut.
 - (c) Payment for each of the following units must be made before cutting begins in that unit:

<u>PAYMENT UNIT NUMBER</u>	<u>PERCENT OF TOTAL SALE VALUE</u>
01	4.7%
02	6.9%
03	14.3%
04	20.3%
05	53.8%

4. If no cutting takes place, the 10% down payment will not be refunded.
5. Operations on the contract issued will terminate on 06/30/2026.

SALE STATISTICS

Volumes were calculated in cubic feet using the Michigan taper model. Cubic foot volume includes all wood inside bark for the product indicated. For display purposes, cubic feet were converted to cords and MBF using a simple conversion factor, e.g. 79 cubic feet per cord and 185 cubic feet per MBF. The cubic foot volumes are precise; the cords and MBF volumes are not. Cubic foot volume cannot be directly converted to cords or boards with precision.

SALE VOLUMES

The total estimated sale volume may not equal the sum of the species/products due to the nature of statistical calculations associated with double sampling methodology.

VOLUME			STATISTICAL RANGE IN CORDS	
TOTAL CUBIC FEET	TOTAL CORDS	PERCENT ERROR	MINIMUM	MAXIMUM
427,015	5,405	19.08%	4,374	6,437

VDU VOLUMES

A VDU is a Volume Determination Unit. Volumes and their associated statistics are calculated at the VDU level and summarized to the sale level. There is often a one to one relationship between a VDU and a Payment Unit, but not always, depending on the cruise design. Refer to the VDU TO PAYMENT UNIT table.

	VOLUME			RANGE IN CORDS	
VDU	TOTAL CUBIC FEET	TOTAL CORDS	PERCENT ERROR	MINIMUM	MAXIMUM
2	17,525	222	43.40%	126	318
111	31,255	396	18.56%	322	469
113	92,166	1,167	17.83%	959	1,375
124	54,951	696	34.79%	454	938
126	27,515	348	150.56%	176	873
128	203,603	2,577	24.43%	1,948	3,207
TOTAL:	427,015	5,405		3,632	7,179

VDU TO PAYMENT UNIT

When a VDU is associated with more than one Payment Unit (PU), the VDU volumes are assigned to the PU based on acres of the VDU within the PU.

VDU	VDU ACRES	PU	PU ACRES
2	14.9	1	14.9
111	20.2	2	20.2
113	15.9	3	15.9
124	28.8	4	28.8
126	5.9	4	5.9
128	31.6	5	31.6
TOTAL:	117.3		117.3

DESCRIPTION OF TIMBER BY PU (PU)

PU	MARKET GROUP	PRODUCT	QUANTITY	UNIT	ACRES	ADVERTISE PRICE			
1	Red Pine	Sawtimber	5.3	MBF	14.9	\$10,827.30			
	White Pine		1.5	MBF					
	Red Pine	Pulpwood	215	Cords					
	White Pine		5	Cords					
2	Black Cherry	Sawtimber	0.7	MBF	20.2	\$15,864.35			
	Red Pine		43.5	MBF					
	B. T. Aspen	Pulpwood	53	Cords					
	Black Cherry		4	Cords					
	Red Maple		7	Cords					
	Red Oak		51	Cords					
	Red Pine		163	Cords					
	White Pine		16	Cords					
3	Black/Red (Hybrid	Sawtimber	3.9	MBF	15.9	\$32,946.30			
	Red Oak		16.7	MBF					
	White Pine		112.1	MBF					
	Black/Red (Hybrid	Pulpwood	2	Cords					
	Red Maple		39	Cords					
	Red Oak		12	Cords					
	White Pine		802	Cords					
	4	Red Pine	Sawtimber	229.3			MBF	34.7	\$46,836.20
Red Pine		Pulpwood	507	Cords					
5	B. T. Aspen	Sawtimber	686.2	MBF	31.6	\$124,070.95			
	Black Cherry		39.5	MBF					
	Black/Red (Hybrid		26.1	MBF					
	Red Maple		103.0	MBF					
	Red Oak		31.9	MBF					
	Red Pine		46.4	MBF					
	B. T. Aspen	Pulpwood	385	Cords					
	Black Cherry		20	Cords					
	Black/Red (Hybrid		14	Cords					
	Red Maple		77	Cords					
	Red Oak		27	Cords					
	Red Pine		27	Cords					
	TOTAL:			1,346.1			MBF		
	TOTAL:			2,426			Cords		

Sale Specific Conditions & Requirements

Sale Name: Frank's Myth Pine

Sale Number: 63-025-22 Seq#: 2

1 - Sale Area

1.2 - Boundaries

1.2.1 - Painted boundaries (9/19)

The sale boundary and Payment Unit boundaries are marked and identified by blue and red paint. Exterior sale boundary lines against private property are marked with blue paint. Exterior sale boundary lines against state are marked with red paint. Retention patches are marked with red paint; no harvesting activities may occur within these areas. The painted boundary line trees are not Included Timber and are to be protected.

2 - Timber Specifications

2.1 - Included Timber

2.1.1 - Clearcut unit(s) with unmerchantable trees (6/14)

Within Payment Unit(s) 3 & 5, cut all trees that are two (2) inches or more at DBH except white oak.

2.1.2 - Clearcut unit(s) w/o unmerchantable trees (8/11)

Within Payment Unit(s) 4, cut all trees which meet minimum piece specifications in 2.2 Utilization except white oak and trees marked with green paint.

2.1.8 - Designated plantation row unit(s) (12/08)

Within Payment Unit(s) 1 & 2, all speciestrees which meet minimum piece specifications in 2.2 Utilization, within designated plantation rows are designated for cutting. Designated plantation rows begin with the third row in from the outside of the plantation, then continue every third row. Because of the variability of row direction, it shall be the responsibility of the producer to maintain the third row sequence.

2.2 - Utilization

2.2.3 - Stump heights (4/07)

Stump heights within Payment Unit(s) 3 shall not exceed 6 inches for all trees. This is in order to facilitate planting operations. A written waiver of this requirement may be obtained if wet summer weather makes winter logging necessary.

3 - Payments

3.6 - Payment Unit Cutting Schedule

3.6.2 - One active unit (12/08)

Each Payment Unit must be completed to the satisfaction of the Unit Manager or his/her representative before the next unit may be opened. The Purchaser must give a one week notice before finishing a unit to allow for inspection.

4 - Transportation

4.1 - Construction

4.1.3 - Slash and earthen piles (8/04)

Piles or windrows of earth along roads and landings that have been widened or constructed shall be leveled. Slash from road maintenance or construction, including stumps, shall be dispersed throughout the sale.

4.1.6 - Road construction (1/09)

Construction of new roads or improvements of existing roads shall be done in such a way as to minimize the environmental and visual impacts. Merchantable trees shall be cut and utilized unless otherwise directed. Non-merchantable trees shall be severed and laid flat on the ground. Slash shall be scattered, and not left in windrows and kept a minimum of 10 feet back from the road edge. Stumps shall be set upright, not left on edge, and be moved at least 10 feet away from the road edge. Disturbed soil shall be feathered into the woods and not left in berms or windrows.

4.1.7 - Road closure (10/11)

All new roads built into the sale must be blocked to vehicle traffic within 30 days of completion of hauling. Overgrown roads that are reopened shall be considered new roads. In general, this will require constructing a four (4') foot high berm of stumps and logs covered with earth. These roads must be rendered impassable to cars and trucks. All stumps from road building and landing construction must be reserved to block any newly constructed roads upon completion of the sale. These stumps must be scattered along the road system to prohibit vehicular movement. Temporary berms may be required if no sale activity occurs for 30 or more consecutive days. Contact the sale administrator for specific details of design and placement.

4.2 - Maintenance

4.2.1 - Hauling restriction (12/08)

Hauling may be restricted on forest roads by the Unit Manager or his/her representative. The restriction may occur during spring breakup or during wet weather conditions.

4.2.5 - Two wheel drive condition (2/04)

All existing trail roads on and adjacent to the sale area must be passable by two-wheel drive traffic for the duration of the sale.

5 - Operations

5.1 - Notification

5.1.1 - Pre-sale conference (10/16)

A pre-sale conference on site between the Purchaser and sale administrator is required prior to beginning a Payment Unit to determine landing and road locations. The Unit Manager or his/her representative must be contacted at least 5 days in advance to schedule the conference.

5.2 - Conduct of Operations

5.2.1 - Slash

5.2.1.8 - Slash height (12/08)

No slash or tree tops may exceed 24 inches in height.

5.2.2 - Hazard Trees/Snags

5.2.2.1 - Den trees (10/16)

Obvious hollow and/or den trees shall be protected and left standing unless they are a safety hazard.

5.2.3 - Operating Restrictions

5.2.3.5 - Oak wilt restriction (1/18)

Within Payment Unit(s) 1, 2, 3, 4, & 5, unless changed by written agreement, cutting, skidding, hauling within the sale and brushing of access roads to the sale are not permitted during the period of April 15 to July 15. Operations may be allowed if specific steps are taken to prevent damaging uncut oak during the high risk period. Those steps may include completing all road brushing before April 15th and clearing a tree-length buffer along uncut oak cover before April 15th. This is necessary to reduce the spread of oak wilt. For more information, contact the Unit Manager or his/her representative.

5.2.4 - Dead and Down Creation

5.2.4.4 - Dead and down creation, grouse (6/18)

To encourage grouse and other wildlife, in Payment Unit(s) 5, leave one, 10" diameter or larger log-length (8 foot minimum) piece on the ground for every 2 acres as well as at least six (6) large tops per acre. These will be evenly scattered throughout the unit. This can be an unmerchantable piece or a full tree. Each log must be clearly identified by a piece of blue flagging.

5.2.29 - Shrub protection (1/20)

Do not cut or damage hawthorn, witch-hazel, dogwood or junberry. These woody-shrub plants are highly beneficial to various wildlife species.

5.2.32 - Decking/landing restoration (9/13)

All decking and landing areas must have the surface area restored to a condition equal to or better than before. This is to ensure the proper regeneration of the stand. Wood debris, chips and "cookies" from trimmings must be removed or scattered away from landing and loading areas and may not be windrowed on the edge.

5.2.38 - No decking against live trees (2/04)

Cut products may not be decked against unmarked or designated leave trees.

5.4 - Soil Protection

5.4.1 - Rutting restriction, general (7/16)

Operations are to cease immediately if equipment and weather conditions result in rutting of roads and/or skid trails which is 12 inches or greater in depth and 50 feet in length. The Unit Manager or his/her representative may restrict hauling and/or skidding if ruts exceed the specified depth. With the Unit Manager or his/her representative's approval, the Purchaser may return to the area when the risk of rutting has decreased.

6 - Safety and Fire Prevention

6.2 - Signing

6.2.1 - Road posting (10/20)

The Purchaser is responsible for posting and maintaining caution signs on State Rd, Frank Smith Rd, and 8th St prior to beginning operations. The road must be posted at appropriate distances from the sale area to warn of logging activity and truck traffic. Signs must be removed when harvest operations are suspended or completed. The Purchaser will provide these signs.

**TIMBER SALE MAP**

This information provided by authority of Part 525, 1994 PA 451, as amended.

Sale Number	Year
63 - 025	22

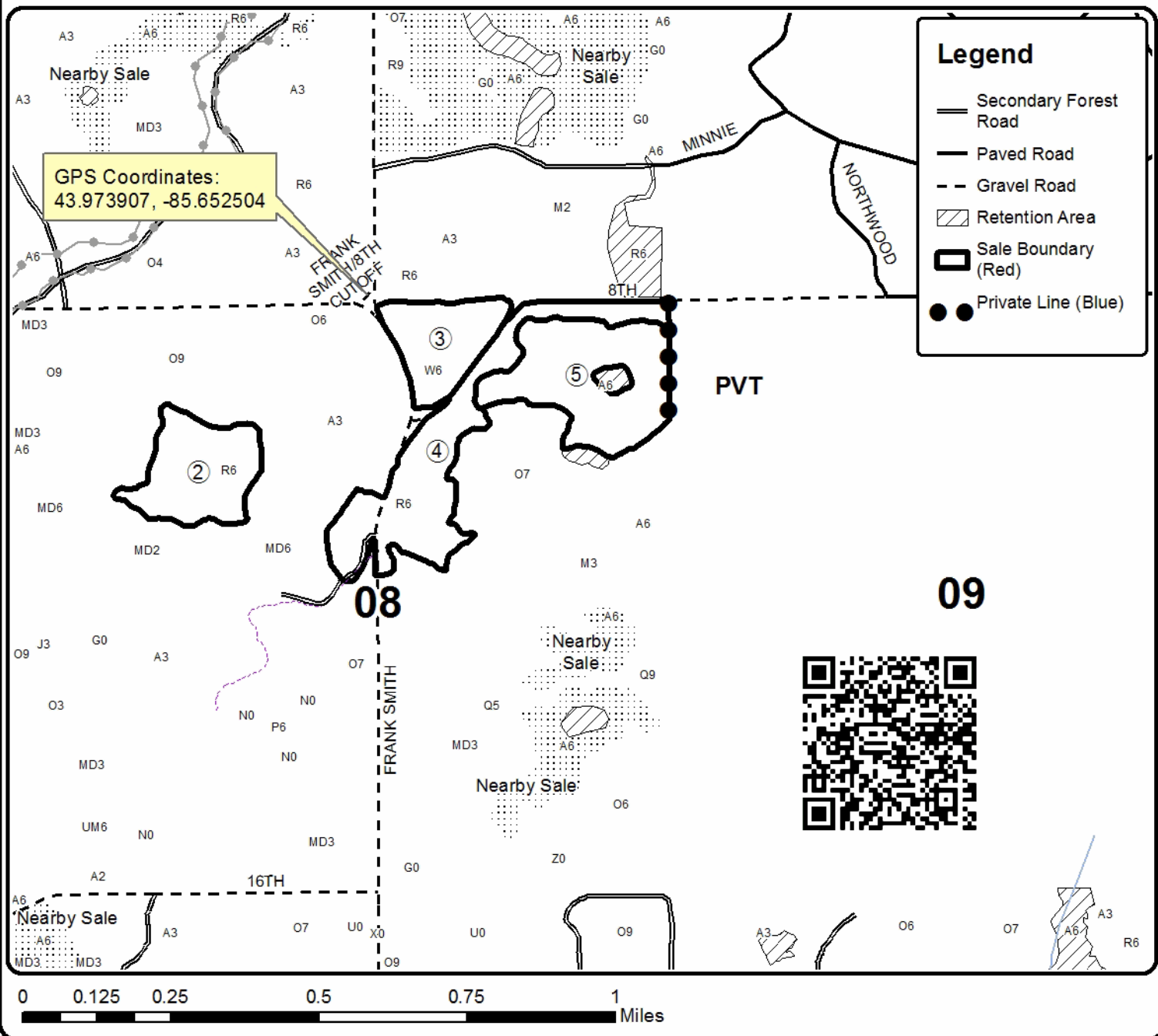
Forest Management Unit Cadillac	County Lake	Mapped By Park	Date 09/22/2022	Page 1	of 1
Township 18N	Range 11W	Section(s) and Subdivision(s) Sec5 S1/2SE, Sec8 NW,NE, Sec31 NW	Scale 1:15,840		

Cover Type				Density	
A = Aspen	H = Hemlock	N = Marsh	U = Upland Brush	0 = Non Stocked	5 = Pole Timber Medium
B = Paper Birch	J = Jack Pine	O = Oak	UM = Upland Mixed	1 = Seedling Sapling Poor	6 = Pole Timber Well
C = Cedar	L = Lowland Brush	P = Lowland Poplar	V = Bog or Marsh	2 = Seedling Sapling Medium	7 = Saw Timber Poor
D = Treed Bog	LM = Lowland Mixed	Q = Mixed Swamp Conifer	W = White Pine	3 = Seedling Sapling Well	8 = Saw Timber Medium
E = Swamp Hdwoods	M = Mpl, Bch, Brch	R = Red Pine	X = Non Stocked	4 = Pole Timber Poor	9 = Saw Timber Well
F = Spruce Fir	MC = Mixed Conifer	S = Black Spruce	Z = Water		
G = Grass	MD = Mixed Deciduous	T = Tamarack			

PU	Acres	PU	Acres
1	14.9	4	34.7
2	20.2	5	31.6
3	15.9		

Frank's Myth Pine

Compartment 014
117.3 Acres



**TIMBER SALE MAP**

This information provided by authority of Part 525, 1994 PA 451, as amended.

Sale Number	Year
63 - 025	22

Forest Management Unit Cadillac	County Lake	Mapped By Park	Date 09/22/2022	Page 1	of 1
Township 18N	Range 11W	Section(s) and Subdivision(s) Sec5 S1/2SE, Sec8 NW,NE, Sec31 NW	Scale 1:15,840		

Cover Type				Density	
A = Aspen	H = Hemlock	N = Marsh	U = Upland Brush	0 = Non Stocked	5 = Pole Timber Medium
B = Paper Birch	J = Jack Pine	O = Oak	UM = Upland Mixed	1 = Seedling Sapling Poor	6 = Pole Timber Well
C = Cedar	L = Lowland Brush	P = Lowland Poplar	V = Bog or Marsh	2 = Seedling Sapling Medium	7 = Saw Timber Poor
D = Treed Bog	LM = Lowland Mixed	Q = Mixed Swamp Conifer	W = White Pine	3 = Seedling Sapling Well	8 = Saw Timber Medium
E = Swamp Hdwoods	M = Mpl, Bch, Brch	R = Red Pine	X = Non Stocked	4 = Pole Timber Poor	9 = Saw Timber Well
F = Spruce Fir	MC = Mixed Conifer	S = Black Spruce	Z = Water		
G = Grass	MD = Mixed Deciduous	T = Tamarack			

PU	Acres	PU	Acres
1	14.9	4	34.7
2	20.2	5	31.6
3	15.9		

Frank's Myth Pine

Compartment 014
117.3 Acres

