



**DEPARTMENT OF NATURAL RESOURCES  
STATE OF MICHIGAN  
TIMBER SALE PROSPECTUS #7347**

**SCHEDULED SALE DATE AND TIME: 10:00 a.m. (local time) on January 9, 2024.**

**LOCATION: ATLANTA MGMT UNIT, 13501 M 33, ATLANTA, MI 49709.**

**CONTACT NAME: Matt Foster**

**PHONE NUMBER: (989) 619-5921**

**PROSPECTUS NOTE:** The bidder is advised to inspect the sale area and review the location, estimated volumes, operating costs and contract terms of proposed sales. Please be aware that some landowners may request 60 days or more notice for access across their land.

Notice is hereby given that bids will be received by the Unit Manager, ATLANTA MANAGEMENT UNIT, for certain timber on the following described lands:

Spring Lk and Elk Rd Pine (54-001-23) / T33N, R02E, SEC. 25, NESW, SE.

T33N, R02E, SEC. 26, NW, NESW.

T33N, R02E, SEC. 27, SENE.

Presque Isle County, Advertised Price \$56,839.10, 120.8 Acres, Jack Pine, Red Pine.

SALE NOTE: 5.2.3.1 - Operating restrictions - Within Payment Units 1-6, cutting, skidding & hauling are limited to the period of August 16 to April 15. This restriction is to limit oak wilt spread and protect adjacent Kirtland's warbler habitat.

A recreation site such as a trail, pathway, or campground is within the sale area or the vicinity.  
Certain restrictions/specifications may be applicable including time restrictions.

## TIMBER SALE INFORMATION

Spring Lk and Elk Rd Pine (54-001-23)

T33N, R02E, SEC. 25; T33N, R02E, SEC. 26; T33N, R02E, SEC. 27.

Presque Isle County (Advertised Price \$56,839.10)

SALE NOTE: 5.2.3.1 - Operating restrictions - Within Payment Units 1-6, cutting, skidding & hauling are limited to the period of August 16 to April 15. This restriction is to limit oak wilt spread and protect adjacent Kirtland's warbler habitat.

A recreation site such as a trail, pathway, or campground is within the sale area or the vicinity. Certain restrictions/specifications may be applicable including time restrictions.

A timber sale contract for this lump sum, sealed bid timber sale will be awarded to the responsible bidder offering the highest sealed bid price. All units of volume listed below were estimated using the Inventory Manager computer program and the new Michigan taper model. Bids must be at or above the following advertised price for each product and species:

<u>PRODUCTS &amp; SPECIES</u>	<u>ESTIMATED UNITS*</u>	<u>ADVERTISED PRICE</u>
Sawtimber		
B. T. Aspen	17.3 MBF	\$ 119.00 / MBF
Black/Red (Hybrid) Oak	9.1 MBF	\$ 144.00 / MBF
Jack Pine	42.1 MBF	\$ 45.00 / MBF
Red Oak	0.9 MBF	\$ 195.00 / MBF
Red Pine	169.5 MBF	\$ 141.00 / MBF
White Oak	5.5 MBF	\$ 76.00 / MBF
Pulpwood		
B. T. Aspen	73 Cords	\$ 27.35 / Cord
Jack Pine	1,188 Cords	\$ 12.40 / Cord
Mixed Hardwood	47 Cords	\$ 26.10 / Cord
Mixed Oak	125 Cords	\$ 33.70 / Cord
Quaking Aspen	12 Cords	\$ 27.35 / Cord
Red Oak	14 Cords	\$ 33.70 / Cord
Red Pine	99 Cords	\$ 41.25 / Cord
White Pine	1 Cords	\$ 31.80 / Cord

\* The total volume is statistically estimated within plus (+) or minus (-) 12.43 percent. There are an estimated 2,065 cords on this timber sale, plus or minus 257 cords at the 95% confidence level. The estimated units are final and not subject to adjustment. Prospective bidders are urged to examine this timber and to make their own estimates of quantity and quality.

### **BOND AND PAYMENT SCHEDULE:**

1. A bond in the amount of \$2,841.96 to insure faithful performance of the conditions of the contract will be deposited by the successful bidder within 21 days of the sale award.
2. Cutting in any sale or unit without the required advance payment would be considered a trespass.
3. Total payment must be paid in advance or according to the following schedule :
  - (a) Ten percent (10%) of the sale value must be paid within 21 days of the sale award.
  - (b) The 10% down payment will be credited towards the first unit cut.
  - (c) Payment for each of the following units must be made before cutting begins in that unit:

<u>PAYMENT UNIT NUMBER</u>	<u>PERCENT OF TOTAL SALE VALUE</u>
01	7.4%
02	34.0%
03	20.8%
04	9.4%
05	16.4%
06	12.0%

4. If no cutting takes place, the 10% down payment will not be refunded.
5. Operations on the contract issued will terminate on 06/30/2027.

### **SALE STATISTICS**

Volumes were calculated in cubic feet using the Michigan taper model. Cubic foot volume includes all wood inside bark for the product indicated. For display purposes, cubic feet were converted to cords and MBF using a simple conversion factor, e.g. 79 cubic feet per cord and 185 cubic feet per MBF. The cubic foot volumes are precise; the cords and MBF volumes are not. Cubic foot volume cannot be directly converted to cords or boards with precision.

## SALE VOLUMES

The total estimated sale volume may not equal the sum of the species/products due to the nature of statistical calculations associated with double sampling methodology.

VOLUME			STATISTICAL RANGE IN CORDS	
TOTAL CUBIC FEET	TOTAL CORDS	PERCENT ERROR	MINIMUM	MAXIMUM
163,141	2,065	12.43%	1,808	2,322

## VDU VOLUMES

A VDU is a Volume Determination Unit. Volumes and their associated statistics are calculated at the VDU level and summarized to the sale level. There is often a one to one relationship between a VDU and a Payment Unit, but not always, depending on the cruise design. Refer to the VDU TO PAYMENT UNIT table.

	VOLUME			RANGE IN CORDS	
VDU	TOTAL CUBIC FEET	TOTAL CORDS	PERCENT ERROR	MINIMUM	MAXIMUM
2	8,422	107	91.78%	9	204
22	16,907	214	20.75%	170	258
47	39,671	502	18.51%	409	595
51	20,877	264	29.68%	186	343
58	38,575	488	21.30%	384	592
75	20,701	262	23.54%	200	324
76	17,987	228	28.14%	164	292
<b>TOTAL:</b>	<b>163,141</b>	<b>2,065</b>		<b>1,522</b>	<b>2,609</b>

## VDU TO PAYMENT UNIT

When a VDU is associated with more than one Payment Unit (PU), the VDU volumes are assigned to the PU based on acres of the VDU within the PU.

VDU	VDU ACRES	PU	PU ACRES
2	3.6	5	3.6
22	13.8	1	13.8
47	33.2	2	8.4
		3	24.8
51	5.3	2	5.3
58	24.7	5	0.8
		6	23.9
75	20.0	4	19.9
		5	0.1
76	20.2	5	20.2
<b>TOTAL:</b>	<b>120.8</b>		<b>120.8</b>

**DESCRIPTION OF TIMBER BY PU (PU)**

PU	MARKET GROUP	PRODUCT	QUANTITY	UNIT	ACRES	ADVERTISE PRICE
1	B. T. Aspen	Sawtimber	3.1	MBF	13.8	\$4,218.05
	Black/Red (Hybrid		0.7	MBF		
	Red Pine		4.3	MBF		
	B. T. Aspen	Pulpwood	7	Cords		
	Jack Pine		152	Cords		
	Mixed Hardwood		2	Cords		
	Red Maple		2	Cords		
	Mixed Oak		4	Cords		
	/Red (Hybrid) Oak		4	Cords		
	Quaking Aspen		8	Cords		
	Red Pine		16	Cords		
2	Jack Pine	Sawtimber	2.7	MBF	13.7	\$19,312.05
	Red Pine		114.7	MBF		
	Jack Pine	Pulpwood	68	Cords		
	Mixed Oak		4	Cords		
	/Red (Hybrid) Oak		1	Cords		
	White Oak		3	Cords		
	Red Oak		3	Cords		
	Red Pine		47	Cords		
3	Jack Pine	Sawtimber	8.0	MBF	24.8	\$11,837.85
	Red Pine		49.6	MBF		
	Jack Pine	Pulpwood	199	Cords		
	Mixed Oak		10	Cords		
	/Red (Hybrid) Oak		1	Cords		
	White Oak		9	Cords		
	Red Oak		7	Cords		
	Red Pine		35	Cords		
4	Black/Red (Hybrid	Sawtimber	2.9	MBF	19.9	\$5,355.10
	Jack Pine		7.7	MBF		
	White Oak		2.1	MBF		
	Jack Pine	Pulpwood	178	Cords		
	Mixed Oak		66	Cords		
	/Red (Hybrid) Oak		64	Cords		
	White Oak		2	Cords		
5	B. T. Aspen	Sawtimber	14.2	MBF	24.7	\$9,319.45
	Black/Red (Hybrid		5.5	MBF		
	Jack Pine		6.0	MBF		
	Red Oak		0.9	MBF		
	Red Pine		0.9	MBF		
	White Oak		3.4	MBF		
	B. T. Aspen	Pulpwood	66	Cords		
	Jack Pine		140	Cords		
	Mixed Hardwood		41	Cords		
	Black Cherry		3	Cords		
	Ironwood		2	Cords		
	Red Maple		36	Cords		
	Mixed Oak		32	Cords		
	/Red (Hybrid) Oak		22	Cords		
	White Oak		10	Cords		
	Quaking Aspen		4	Cords		
	Red Oak		4	Cords		
	Red Pine		1	Cords		
	White Pine		1	Cords		
6	Jack Pine	Sawtimber	17.7	MBF	23.9	\$6,796.60
	Jack Pine	Pulpwood	451	Cords		

DESCRIPTION OF TIMBER BY PU (PU), CON'T

PU	MARKET GROUP	PRODUCT	QUANTITY	UNIT	ACRES	ADVERTISE PRICE
6 con't	Mixed Hardwood	Pulpwood	4	Cords		
	Red Maple		4	Cords		
	Mixed Oak		9	Cords		
	Northern Pin Oak		5	Cords		
	White Oak		4	Cords		
TOTAL:			244.4	MBF		
TOTAL:			1,559	Cords		

## **Sale Specific Conditions & Requirements**

**Sale Name: Spring Lk and Elk Rd Pine**

**Sale Number: 54-001-23 Seq#: 1**

### **1 - Sale Area**

#### **1.2 - Boundaries**

##### **1.2.1 - Painted boundaries (9/19)**

The sale boundary and Payment Unit boundaries are marked and identified by red and yellow paint. Exterior sale boundary lines against state are marked with red paint. Interior Payment Unit boundaries are marked with yellow paint. The painted boundary line trees are not Included Timber and are to be protected. Yellow painted trees designating an interior Payment Unit boundary are only to be cut when all surrounding Payment Units have been paid.

### **2 - Timber Specifications**

#### **2.1 - Included Timber**

##### **2.1.1 - Clearcut unit(s) with unmerchantable trees (6/14)**

Within Payment Unit(s) 1, 2, 3, & 6, cut all trees that are 2 inches or more at DBH.

##### **2.1.5 - Overstory removal unit(s) (8/11)**

Within Payment Unit(s) 4 & 5, all trees with DBH equal to or greater than 4.5 inches which meet minimum piece specifications in 2.2 Utilization, are designated for cutting. Note: See spec 5.2.4.7 - 'Dead and down creation' for instructions on orange marked trees.

#### **2.2 - Utilization**

##### **2.2.2 - Chipping required (2/18)**

Payment Units 1-6 must be chip harvested to facilitate subsequent planting operations. The Purchaser has the option to produce sawlogs or pulpwood bolts, but the remaining portion of the trees must be chipped and hauled. Products may be produced as roundwood and forwarded to decking areas in final product length, but the tops must be left intact and skidded to the landing for chipping in order to minimize the amount of residual slash.

If market conditions or the 2.2.5 restriction in Payment Units 4 & 5 limit the practicality of chipping, the following is required: Tops must be cut into lengths 4 feet or less and trees greater than 4 inches at DBH must be cut to a 2-inch top or smaller. Sub-merchantable trees, and hardwood limbs 4 inches or greater where they attach to the stem, are to be cut/reduced to 4-foot lengths. Tops and slash must also be spread evenly across the sale and not left in windrows. This is to speed the breakdown of tops and slash. The requirement to retain approximately 1/6 to 1/3 of treetops and limbs less than four inches in diameter is still applicable (G. C. & R. 2.2).

To not delay follow-up cultivation work, this work must be completed within 30 days of severing stems. No additional Payment Units can be entered until these Payment Units are considered complete and in compliance with specifications 2.2.2 and 2.2.3.

##### **2.2.3 - Stump heights (4/07)**

Stump heights within Payment Units 1-6 shall not exceed 6 inches for all trees. This is in order to facilitate planting operations.

##### **2.2.5 - Limbed tree skidding (1/09)**

The skidding of whole trees or tree segments with limbs attached is prohibited within Payment Units 4 & 5.

### **3 - Payments**

#### **3.3 - Pre-measured Sales**

##### **3.3.4 - Dividing payment units (7/14)**

Payment Unit(s) greater than \$20,000 may be divided at the request of the Purchaser and upon approval of the Unit Manager. Dividing Payment Units is a contract modification which requires a Timber Sale Contract Amendment. There will be only one

division per Payment Unit.

### 3.4 - Damaged Timber

#### 3.4.1 - Damaged timber (7/16)

General Condition and Requirement 3.4 Damaged Timber, defines liquidated damages for undesignated live merchantable trees which are cut or injured. In addition, extreme care should be taken to avoid damage to tree seedlings and saplings.

Within Payment Units 4 & 5, if more than 50% of the tree seedlings or saplings (1/4" to 4.5" DBH) within a specified portion of the Sale Area are damaged, liquidated damages will be assessed at \$500 per acre for all acreage within that specified portion of the Sale Area that was damaged.

## 4 - Transportation

### 4.1 - Construction

#### 4.1.3 - Slash and earthen piles (8/04)

Piles or windrows of earth along roads and landings that have been widened or constructed shall be leveled. Slash from road maintenance or construction, including stumps, shall be chipped, utilized or otherwise removed from the sale.

#### 4.1.6 - Road construction (1/09)

Construction or improvements of existing roads shall be done in such a way as to minimize the environmental and visual impacts. Merchantable trees shall be cut and utilized unless otherwise directed. Non-merchantable trees shall be severed and laid flat on the ground. Slash shall be scattered, and not left in windrows and kept a minimum of 10 feet back from the road edge. Stumps shall be set upright, not left on edge, and be moved at least 10 feet away from the road edge. Disturbed soil shall be feathered into the woods and not left in berms or windrows.

Narrow access into some Payment Units will require widening and blading on lengths of state forest roads. Additional access timber must be piled separately for scaling by the Sale Administrator. The improved roads and constructed roads must not be unreasonably widened beyond 15 feet.

#### 4.1.7 - Road closure (10/11)

All new roads built into the sale must be blocked to vehicle traffic upon completion of the sale. Overgrown roads that are reopened shall be considered new roads. In general, this will require constructing a four (4') foot high berm of stumps and logs covered with earth. Stumps and brush must be placed along the remainder of the trail. These roads must be rendered impassable to cars and trucks. Contact the Sale Administrator for specific details of design and placement.

### 4.2 - Maintenance

#### 4.2.5 - Two wheel drive condition (2/04)

All existing trail roads on and adjacent to the sale area must be passable by two-wheel drive traffic for the duration of the sale.

## 5 - Operations

### 5.1 - Notification

#### 5.1.1 - Pre-sale conference (10/16)

A pre-sale conference between the Purchaser and sale administrator is required prior to beginning any operations to determine landing and road locations. The Unit Manager or his/her representative must be contacted at least 5 days in advance to schedule the conference.

#### 5.1.4 - Post-sale conference (10/16)

A post-sale conference on site between the Purchaser and sale administrator is required 5 days prior to the completion of active logging operations to determine clean-up and repair of landings, road edges, and the fulfillment of other contract specifications.

### 5.2 - Conduct of Operations

#### 5.2.2 - Hazard Trees/Snags

#### 5.2.2.1 - Den trees (10/16)

Obvious hollow and/or den trees shall be protected and left standing unless they are a safety hazard.

### 5.2.3 - Operating Restrictions

#### 5.2.3.1 - Operating restrictions (9/11)

Within Payment Unit(s) 1-6, cutting, skidding, and hauling are limited to the period of August 16 to April 15. This restriction is to limit the spread of oak wilt and to protect adjacent Kirtland's warbler habitat.

#### 5.2.3.6 - Bark beetle restriction (12/08)

In the event drought creates a high risk of pine bark beetle infestation, pine is not to be cut during the period March 1 through July 1, unless all portions of trees greater than two inches in diameter are removed from the sale area, reduced to chips, or treated to the satisfaction of the Unit Manager or his/her representative, within fifteen days of being severed from the stump. Pine log decks, pulpwood piles and treetops that are piled for chipping in the fall or winter within a 1/4 mile of susceptible sites must be removed before March 15. Residual slash must not be placed in piles or rows and must be spread over the site for quick drying. The Department of Natural Resources will exercise this specification if the risk of damage warrants.

#### 5.2.3.11 - Coppice regeneration protection (4/10)

Timber harvesting in Payment Units 4 & 5 must be completed within 30 days of severing/cutting stem(s) to minimize damage to deciduous regeneration. Any post harvest operations, such as chipping, must be completed before sprouting of regeneration occurs. If it is anticipated that chipping will be delayed, then tops shall be carried to one central location or left unchipped. The Unit Manager or his/her representative may cease such operations if sprouting occurs before the operation is complete.

### 5.2.4 - Dead and Down Creation

#### 5.2.4.7 - Dead and down creation: hare, grouse, deer and other species (5/15)

To improve horizontal cover habitat for snowshoe hare, grouse, deer, and other species, the Purchaser is to push over all orange painted trees in Payment Units 5. These trees should be tipped over with the root ball still attached so the base of the tree is suspended off the ground. The crown of the fallen tree should be at or near ground level after it is pushed over. If it is impractical to push the trees over, they may be cut or partially cut and pushed over.

#### 5.2.18 - Equipment requirements (1/09)

No feller bunchers are allowed in Payment Units 4 & 5, unless operators demonstrate care and are damaging less than 50% of the regeneration.

#### 5.2.31 - Landing locations (9/13)

Landing locations are shown on the Timber Sale Map. Landings must be confined to these designated sites unless otherwise authorized by the Unit Manager or his/her representative.

#### 5.2.32 - Decking/landing restoration (9/13)

All decking and landing areas must have the surface area restored to a condition equal to or better than before. This is to ensure the proper regeneration of the stand. Wood debris, chips and "cookies" from trimmings must be removed or scattered away from landing and loading areas and may not be windrowed on the edge.

#### 5.2.38 - No decking against live trees (2/04)

Cut products may not be decked against unmarked or designated leave trees.

#### 5.2.39 - ORV trail/route protection (4/18)

The Atlanta ORV and motorcycle trails and route are shown on the Timber Sale Map. Do not cut trees or damage posts with yellow, brown, or orange trail markers. All stumps within 5 feet of the trail must be cut flush with the ground. Maintain a 20-foot-wide slash, debris, and rut free zone daily using the trails or routes as the centerline. Do not run equipment down the trails or routes. Skidding across the trails or routes may only occur in locations approved by the Sale Administrator.

#### 5.2.40 - Pathway protection (10/10)

The High Country Pathway is shown on the Timber Sale Map. Do not cut trees or damage posts with blue pathway markers. Maintain a 20-foot wide slash, debris, and rut free zone daily, using the pathway as the centerline. Do not run equipment down the pathway. Skidding across the trail may only occur in locations approved by the Sale Administrator.



## 5.4 - Soil Protection

### 5.4.1 - Rutting restriction, general (7/16)

Operations are to cease immediately if equipment and weather conditions result in rutting of roads and/or skid trails which is 12 inches or greater in depth and 50 feet in length. The Unit Manager or his/her representative may restrict hauling and/or skidding if ruts exceed the specified depth. With the Unit Manager or his/her representative's approval, the Purchaser may return to the area when the risk of rutting has decreased.

## 5.8 - Protection of Endangered Species

### 5.8.5 - Protection of raptor nests (3/13)

All trees with raptor nests will be protected if found during harvesting operations. Notification will be made to the Unit Manager or his/her representative who will notify the Wildlife Biologist so an on-site evaluation and recommendation can be made, if necessary.

## 6 - Safety and Fire Prevention

## 6.2 - Signing

### 6.2.3 - Recreational trail posting (10/20)

The Purchaser is responsible for posting and maintaining caution signs on the Atlanta ATV Route, High Country Pathway, and Motorcycle (Red Bridge To Atlanta MCCCT South) trails prior to beginning operations. The trail must be posted at appropriate distances from the Sale Area to warn of logging activity and truck traffic at both ends of the trail. Signs must be removed when harvest operations are suspended or completed. The Purchaser will provide these signs.

**TIMBER SALE MAP**

This information provided by authority of Part 525, 1994 PA 451, as amended.

54 - 001

2023

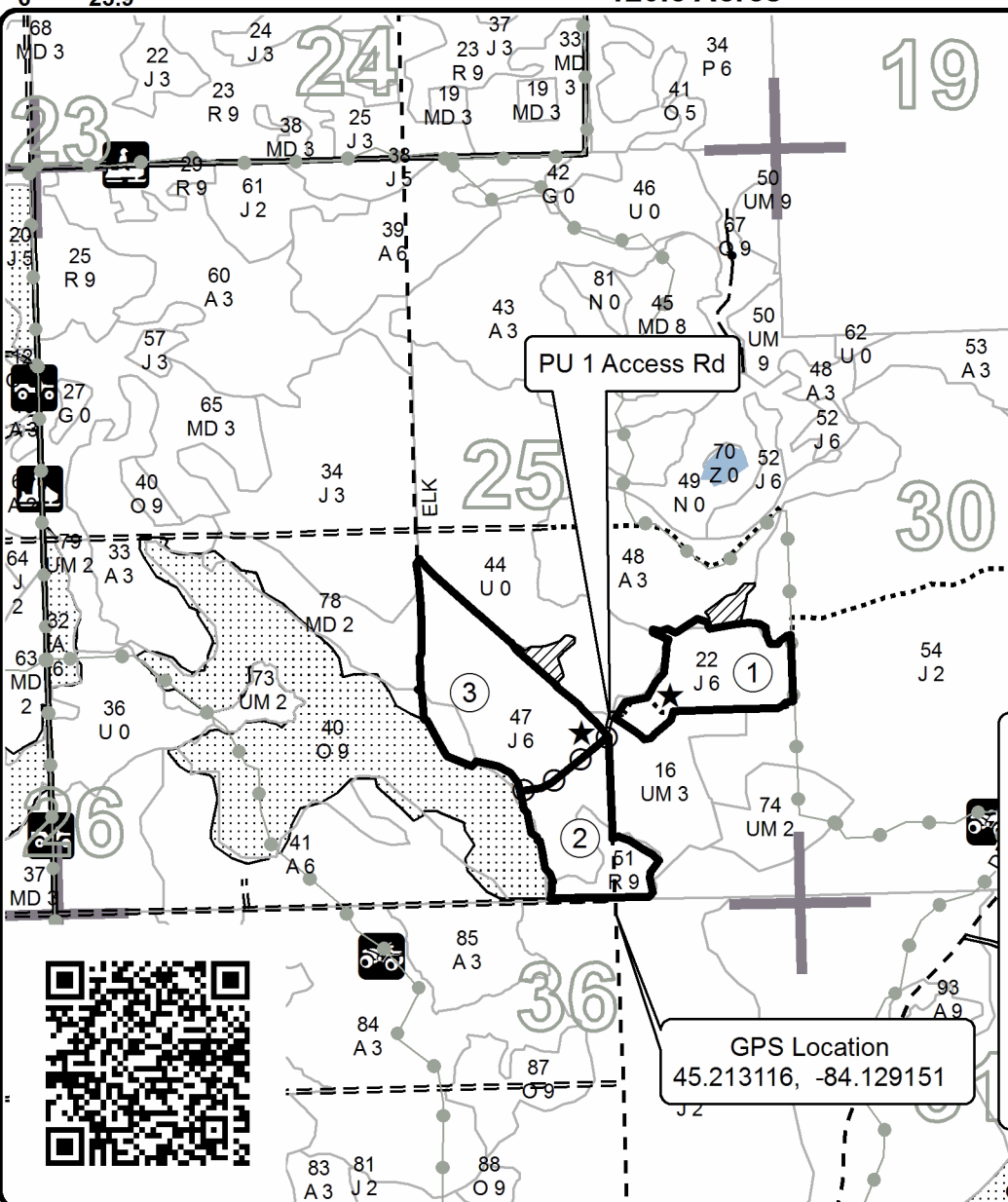
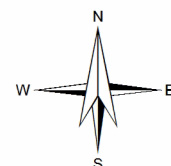
Forest Management Unit  
Atlanta Management UnitCounty  
Presque IsleMapped By Coy  
Cruised By CoyDate  
04/07/2023Page  
1 of  
2Township  
33NRange  
02ESection(s) and Subdivision(s)  
25- NESW,SE 26- NW,NESW 27- SENE

1:15,840

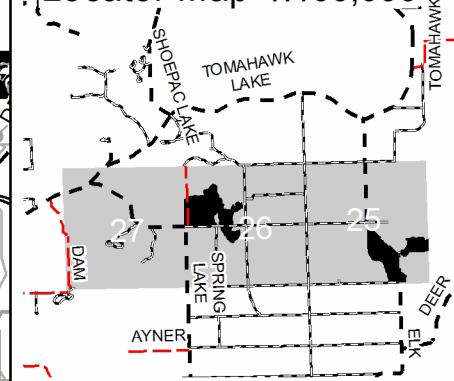
**Cover Type**A = Aspen  
B = Paper Birch  
C = Cedar  
D = Treed Bog  
E = Swamp Hardwoods  
F = Spruce/Fir  
G = Grass  
H = HemlockJ = Jack Pine  
K = Rock  
L = Lowland Brush  
LM = Lowland Mix Forest  
M = Maple, Beech, Birch  
MC = Mixed Conifer  
MD = Mixed Deciduous  
N = MarshO = Oak  
P = Lowland Poplar  
Q = Mixed Swamp Conifer  
R = Red Pine  
S = Black Spruce  
T = TamarackU = Upland Brush  
UM = Upland Mix Forest  
V = Bog or Marsh  
W = White Pine  
X = Non Stocked  
Y = Sand  
Z = Water**Density**0 = Non Stocked  
1 = Seedling Sapling Poor  
2 = Seedling Sapling Medium  
3 = Seedling Sapling Well  
4 = Pole Timber Poor5 = Pole Timber Medium  
6 = Pole Timber Well  
7 = Saw Timber Poor  
8 = Saw Timber Medium  
9 = Saw Timber Well**PU Acres**1 13.8  
2 13.7  
3 24.8  
4 19.9  
5 24.7  
6 23.9**Spring Lk and Elk Rd Pine**

Compartment 124

120.8 Acres

**Legend**

- Against State (Red)
- Payment Unit Line (Yellow)
- ▨ Retention Area (Outside of Sale)
- ▤ Nearby Timber Sales
- Stand Boundaries
- Lakes
- Payment Unit
- ★ Landing
- Recreational Trail
- Secondary Road
- == Forest Access Route
- - Gravel Road
- ... Temporary Access
- Drain
- Section Corner

**Locator Map 1:100,000**GPS Location  
45.213116, -84.1291510 0.125 0.25 0.5  
Miles

**TIMBER SALE MAP**

This information provided by authority of Part 525, 1994 PA 451, as amended.

54 - 001

2023

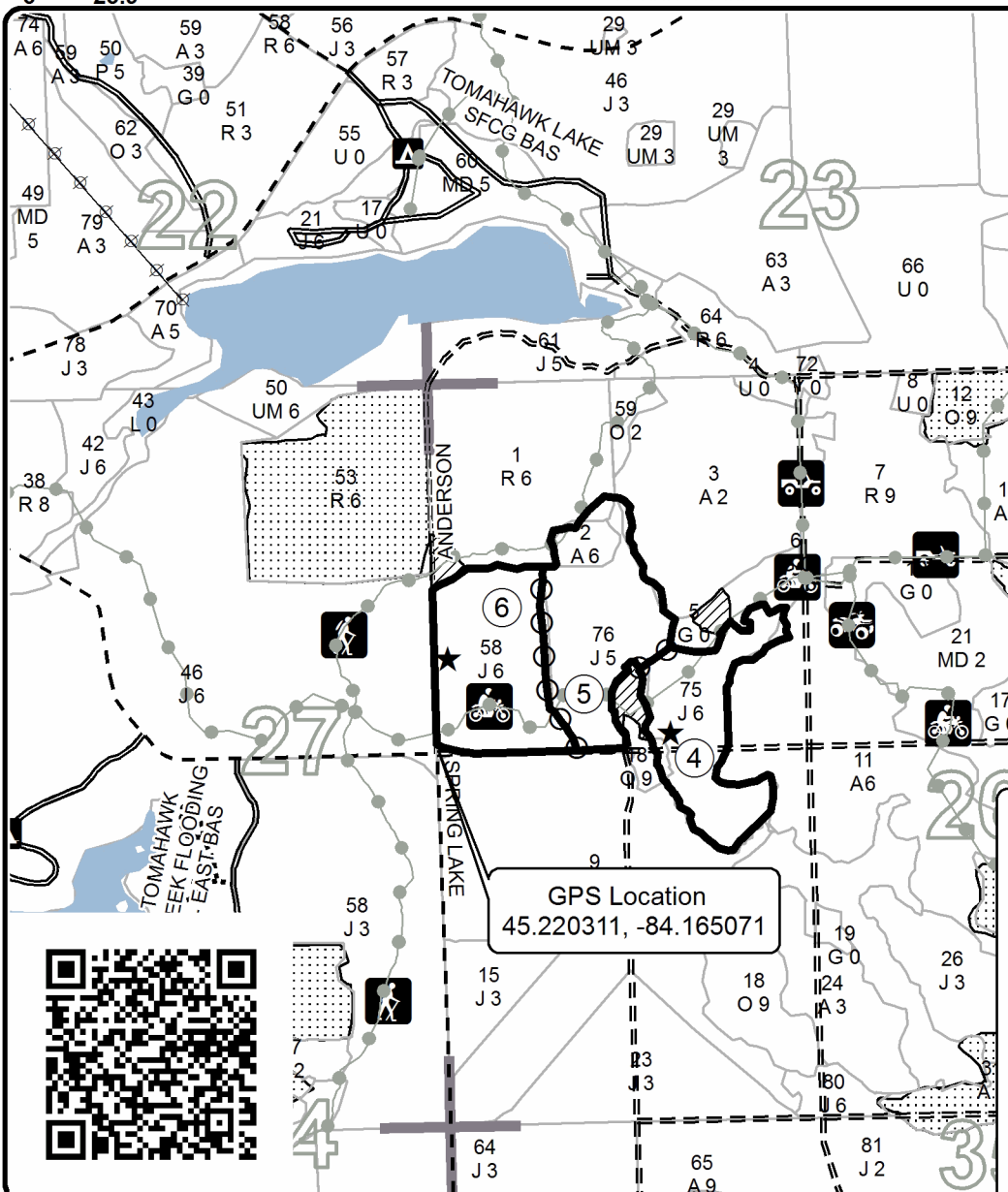
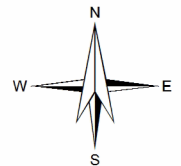
Forest Management Unit  
Atlanta Management UnitCounty  
Presque IsleMapped By Coy  
Cruised By CoyDate  
04/07/2023Page  
2 of  
2Township  
33NRange  
02ESection(s) and Subdivision(s)  
25- NESW,SE 26- NW,NESW 27- SENE

1:15,840

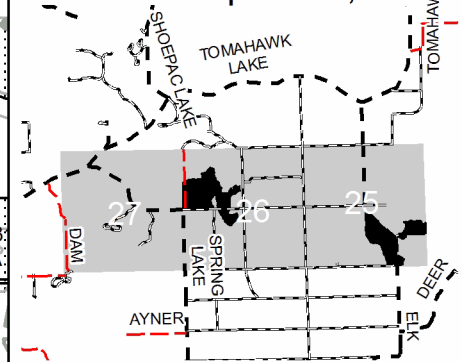
**Cover Type**A = Aspen  
B = Paper Birch  
C = Cedar  
D = Treed Bog  
E = Swamp Hardwoods  
F = Spruce/Fir  
G = Grass  
H = HemlockJ = Jack Pine  
K = Rock  
L = Lowland Brush  
LM = Lowland Mix Forest  
M = Maple, Beech, Birch  
MC = Mixed Conifer  
MD = Mixed Deciduous  
N = MarshO = Oak  
P = Lowland Poplar  
Q = Mixed Swamp Conifer  
R = Red Pine  
S = Black Spruce  
T = TamarackU = Upland Brush  
UM = Upland Mix Forest  
V = Bog or Marsh  
W = White Pine  
X = Non Stocked  
Y = Sand  
Z = Water**Density**0 = Non Stocked  
1 = Seedling Sapling Poor  
2 = Seedling Sapling Medium  
3 = Seedling Sapling Well  
4 = Pole Timber Poor5 = Pole Timber Medium  
6 = Pole Timber Well  
7 = Saw Timber Poor  
8 = Saw Timber Medium  
9 = Saw Timber Well**PU Acres**1 13.8  
2 13.7  
3 24.8  
4 19.9  
5 24.7  
6 23.9**Spring Lk and Elk Rd Pine**

Compartment 124

120.8 Acres

**Legend**

- Against State (Red)
- Payment Unit Line (Yellow)
- ▨ Retention Area (Outside of Sale)
- ▤ Nearby Timber Sales
- Stand Boundaries
- Lakes
- Payment Unit
- ★ Landing
- ▲ State Forest Campgrounds
- Recreational Trail
- Secondary Road
- Forest Access Route
- Gravel Road
- County Road - Seasonal
- Temporary Access
- Powerline
- Section Corner

**Locator Map 1:100,000**

0 0.125 0.25 0.5 Miles