



**DEPARTMENT OF NATURAL RESOURCES
STATE OF MICHIGAN
TIMBER SALE PROSPECTUS #7377**

SCHEDULED SALE DATE AND TIME: **9:00 a.m. (local time) on February 15, 2024.**

LOCATION: **PIGEON RIVER COUNTRY MGMT UNIT, PO BOX 456, 9966 TWIN LAKES ROAD, VANDERBILT, MI**

CONTACT NAME: Mark Monroe

PHONE NUMBER: (989) 983-4101

PROSPECTUS NOTE: The bidder is advised to inspect the sale area and review the location, estimated volumes, operating costs and contract terms of proposed sales. Please be aware that some landowners may request 60 days or more notice for access across their land.

Notice is hereby given that bids will be received by the Unit Manager, PIGEON RIVER COUNTRY MANAGEMENT UNIT, for certain timber on the following described lands:

Jack and Piame (53-010-23) / T32N, R01E, SEC. 20, SENW, S1/2NE.

Montmorency County, Advertised Price \$6,566.30, 33.1 Acres, Hardwood, Jack Pine.

TIMBER SALE INFORMATION

Jack and Plane (53-010-23)

T32N, R01E, SEC. 20.

Montmorency County (Advertised Price \$6,566.30)

A timber sale contract for this lump sum, sealed bid timber sale will be awarded to the responsible bidder offering the highest sealed bid price. All units of volume listed below were estimated using the Inventory Manager computer program and the new Michigan taper model. Bids must be at or above the following advertised price for each product and species:

<u>PRODUCTS & SPECIES</u>	<u>ESTIMATED UNITS*</u>	<u>ADVERTISED PRICE</u>
Sawtimber		
Jack Pine	39.1 MBF	\$ 44.00 / MBF
Pulpwood		
Black Cherry	2 Cords	\$ 15.45 / Cord
Jack Pine	171 Cords	\$ 12.70 / Cord
Red Maple	58 Cords	\$ 15.45 / Cord
Red Pine	21 Cords	\$ 52.80 / Cord
Scotch Pine	60 Cords	\$ 9.15 / Cord
White Pine	4 Cords	\$ 22.35 / Cord

* The total volume is statistically estimated within plus (+) or minus (-) 29.38 percent. There are an estimated 398 cords on this timber sale, plus or minus 117 cords at the 95% confidence level. The estimated units are final and not subject to adjustment. Prospective bidders are urged to examine this timber and to make their own estimates of quantity and quality.

BOND AND PAYMENT SCHEDULE:

1. A bond in the amount of \$656.63 to insure faithful performance of the conditions of the contract will be deposited by the successful bidder within 21 days of the sale award.
2. Cutting in any sale or unit without the required advance payment would be considered a trespass.
3. Total payment must be paid in advance or according to the following schedule:
 - (a) Ten percent (10%) of the sale value must be paid within 21 days of the sale award.
 - (b) The remainder is due before cutting begins.
 - (c) Payment for each of the following units must be made before cutting begins in that unit:

PAYMENT UNIT NUMBER	PERCENT OF TOTAL SALE VALUE
01	100.0%
4. If no cutting takes place, the 10% down payment will not be refunded.
5. Operations on the contract issued will terminate on 06/30/2027.

SALE STATISTICS

Volumes were calculated in cubic feet using the Michigan taper model. Cubic foot volume includes all wood inside bark for the product indicated. For display purposes, cubic feet were converted to cords and MBF using a simple conversion factor, e.g. 79 cubic feet per cord and 185 cubic feet per MBF. The cubic foot volumes are precise; the cords and MBF volumes are not. Cubic foot volume cannot be directly converted to cords or boards with precision.

SALE VOLUMES

The total estimated sale volume may not equal the sum of the species/products due to the nature of statistical calculations associated with double sampling methodology.

VOLUME			STATISTICAL RANGE IN CORDS	
TOTAL CUBIC FEET	TOTAL CORDS	PERCENT ERROR	MINIMUM	MAXIMUM
31,413	398	29.38%	281	514

VDU VOLUMES

A VDU is a Volume Determination Unit. Volumes and their associated statistics are calculated at the VDU level and summarized to the sale level. There is often a one to one relationship between a VDU and a Payment Unit, but not always, depending on the cruise design. Refer to the VDU TO PAYMENT UNIT table.

	VOLUME			RANGE IN CORDS	
VDU	TOTAL CUBIC FEET	TOTAL CORDS	PERCENT ERROR	MINIMUM	MAXIMUM
71	31,413	398	29.38%	281	514
TOTAL:	31,413	398		281	514

VDU TO PAYMENT UNIT

When a VDU is associated with more than one Payment Unit (PU), the VDU volumes are assigned to the PU based on acres of the VDU within the PU.

VDU	VDU ACRES	PU	PU ACRES
71	33.1	1	33.1
TOTAL:	33.1		33.1

DESCRIPTION OF TIMBER BY PU (PU)

PU	MARKET GROUP	PRODUCT	QUANTITY	UNIT	ACRES	ADVERTISE PRICE
1	Jack Pine	Sawtimber	39.1	MBF	33.1	\$6,566.30
	Black Cherry	Pulpwood	2	Cords		
	Jack Pine		171	Cords		
	Red Maple		58	Cords		
	Red Maple	Sawtimber	3.1	MBF		
	Red Maple	Pulpwood	52	Cords		
	Red Pine		21	Cords		
	Scotch Pine		60	Cords		
	Scotch Pine	Sawtimber	9.7	MBF		
	Scotch Pine	Pulpwood	41	Cords		
	White Pine		4	Cords		
	White Pine	Sawtimber	1.3	MBF		
	White Pine	Pulpwood	1	Cords		
TOTAL:			39.1	MBF		
TOTAL:			316	Cords		

Sale Specific Conditions & Requirements

Sale Name: Jack and Plane

Sale Number: 53-010-23 Seq#: 1

1 - Sale Area

1.2 - Boundaries

1.2.1 - Painted boundaries (9/19)

The sale boundary and Payment Unit boundaries are marked and identified by red & blue paint. Exterior sale boundary lines against private property are marked with blue paint. Exterior sale boundary lines against state land are marked with red paint. Retention patches are marked with red X's; no harvesting activities may occur within these areas. The painted boundary line trees are not Included Timber and are to be protected unless marked with orange paint.

2 - Timber Specifications

2.1 - Included Timber

2.1.1 - Clearcut unit(s) with unmerchantable trees (6/14)

Within Payment Unit(s) 1, cut all trees that are two (2) inches or more at DBH, except do not cut any oak or trees that are marked with green paint above and below stump height. These trees are not included timber and are to be protected.

2.1.16 - Timber along county or forest roads (6/14)

Cut and remove all trees directly adjacent to County Road R-O-Ws on Blue Lakes Road. Cut stumps must be left at least two (2) feet high to facilitate plowing and grading of road.

2.2 - Utilization

2.2.2 - Chipping required (2/18)

The Sale Area must be chip harvested to facilitate future silvicultural activities. The Purchaser has the option to produce sawlogs or pulpwood bolts, but the remaining portion of the trees must be chipped and hauled. Products may be produced as roundwood and forwarded to decking areas in final product length, but the tops must be left intact and skidded to the landing for chipping in order to minimize the amount of residual slash. Skidding of the tops must be done in a way which scarifies the ground to help with regeneration. Alternatively whole tree harvesting will also be allowed. If the deadline is not met, damages will be collected determined by the cost to complete this work. The requirement to retain approximately 1/6 to 1/3 of treetops and limbs less than four inches in diameter does not apply (G. C. & R. 2.2).

3 - Payments

3.4 - Damaged Timber

3.4.1 - Damaged timber (7/16)

General Condition and Requirement 3.4 Damaged Timber, defines liquidated damages for undesignated live merchantable trees which are cut or injured. In addition, extreme care should be taken to avoid damage to pockets of red & white pine seedlings and saplings.

No damage is acceptable to undesignated live merchantable trees. Within the Sale Area, if more than 10% of trees (> 4.5" DBH) within a specified area of the sale are damaged, liquidated damages will be assessed for all trees damaged. Rates will be in accordance with General Condition and Requirement 3.4 Damaged Timber.

4 - Transportation

4.1 - Construction

4.1.3 - Slash and earthen piles (8/04)

Piles or windrows of earth along roads and landings that have been widened or constructed shall be leveled. Slash from road maintenance or construction, including stumps, shall be chipped, utilized or otherwise removed from the sale.

4.1.12 - No new roads (1/12)

No new roads will be permitted in the Sale Area. All operations are limited to existing roads. Only skid trails will be allowed.

4.2 - Maintenance

4.2.5 - Two wheel drive condition (2/04)

All existing trail roads on and adjacent to the sale area must be passable by two-wheel drive traffic for the duration of the sale.

5 - Operations

5.2 - Conduct of Operations

5.2.2 - Hazard Trees/Snags

5.2.2.1 - Den trees (10/16)

Obvious hollow and/or den trees shall be protected and left standing unless they are a safety hazard.

5.2.3 - Operating Restrictions

5.2.3.2 - Operating restrictions (9/11)

Within Payment Unit(s) 1, unless changed by written agreement, cutting and skidding are limited during the period of 04/01 to 11/30. This restriction is to facilitate regeneration through ground scarification that would otherwise be hindered by snow.

5.2.4 - Dead and Down Creation

5.2.4.3 - Dead and down creation, dead trees (6/07)

Except as provided for in General Condition and Requirement 5.2.2, no dead trees, standing or down, are to be cut, skidded, or processed.

5.2.32 - Decking/landing restoration (9/13)

All decking and landing areas must have the surface area restored to a condition equal to or better than before. This is to ensure the proper regeneration of the stand. Wood debris, chips and "cookies" from trimmings must be removed or scattered away from landing and loading areas and may not be windrowed on the edge.

5.2.38 - No decking against live trees (2/04)

Cut products may not be decked against unmarked or designated leave trees.

5.4 - Soil Protection

5.4.1 - Rutting restriction, general (7/16)

Operations are to cease immediately if equipment and weather conditions result in rutting of roads and/or skid trails which is 12 inches or greater in depth and 25 feet in length. The Unit Manager or his/her representative may restrict hauling and/or skidding if ruts exceed the specified depth. With the Unit Manager or his/her representative's approval, the Purchaser may return to the area when the risk of rutting has decreased.

5.8 - Protection of Endangered Species

5.8.5 - Protection of raptor nests (3/13)

All trees with raptor nests will be protected if found during harvesting operations. Notification will be made to the Unit Manager or his/her representative who will notify the Wildlife Biologist so an on-site evaluation and recommendation can be made, if necessary.

8 - Performance and Settlement

8.3 - Uncompleted or Terminated Contracts

8.3.1 - Completion of contract, chipping (1/16)

In addition to cutting, all chipping must be completed by the contract expiration date. If chipping has not been completed, an extension fee or damages may be charged per General Condition & Requirement 7.2 and 8.3.

**TIMBER SALE MAP**

This information provided by authority of Part 525, 1994 PA 451, as amended.

Sale Number	Year
53 - 010	23

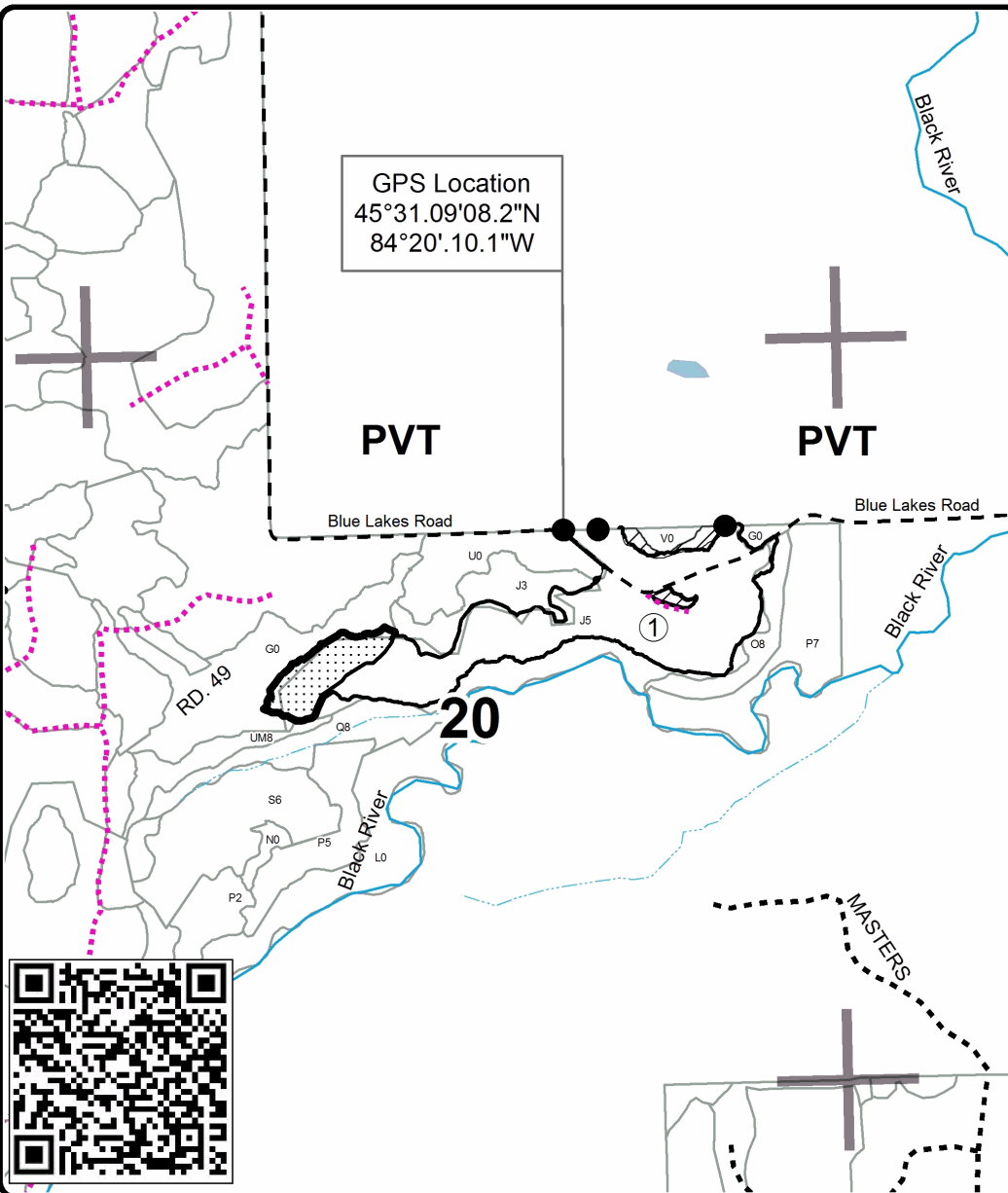
Forest Management Unit Pigeon River Country	County Montmorency	Mapped By Barnes	Date 07/05/2023	Page 1	of 1
Township 32N	Range 01E	Section(s) and Subdivision(s) 20: SENW,S1/2NE	Scale 1:15,840		

Cover Type				Density	
A = Aspen	H = Hemlock	N = Marsh	U = Upland Brush	0 = Non Stocked	5 = Pole Timber Medium
B = Paper Birch	J = Jack Pine	O = Oak	UM = Upland Mixed	1 = Seedling Sapling Poor	6 = Pole Timber Well
C = Cedar	L = Lowland Brush	P = Lowland Poplar	V = Bog or Marsh	2 = Seedling Sapling Medium	7 = Saw Timber Poor
D = Treed Bog	LM = Lowland Mixed	Q = Mixed Swamp Conifer	W = White Pine	3 = Seedling Sapling Well	8 = Saw Timber Medium
E = Swamp Hdwoods	M = Mpl, Bch, Brch	R = Red Pine	X = Non Stocked	4 = Pole Timber Poor	9 = Saw Timber Well
F = Spruce Fir	MC = Mixed Conifer	S = Black Spruce	Z = Water		
G = Grass	MD = Mixed Deciduous	T = Tamarack			

PU Acres
1 33.1

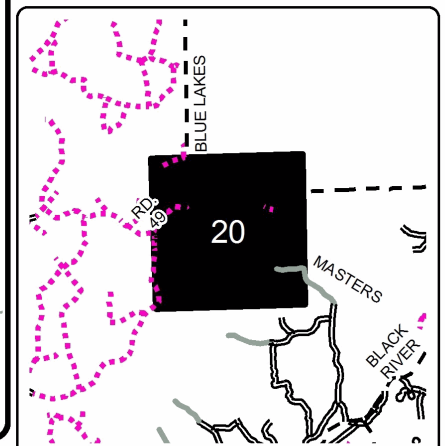
Jack and Plane

Compartment 059
33.1 Acres

**Legend**

- Against State (Red)
- ● Private Line (Blue)
- ▨ Retention Area
- ▤ Nearby Sales
- Stand Boundaries
- - Gravel Road
- ⋯ Temp Management Access
- ⋯ Intermittent Stream
- Perennial River
- Section Corners

Locator Map
1:80,000



0 0.125 0.25 0.5 0.75 1 Miles