



DEPARTMENT OF NATURAL RESOURCES
STATE OF MICHIGAN

TIMBER SALE PROSPECTUS #7412

REVISION NOTICE #1 - April 17, 2024

SCHEDULED SALE DATE AND TIME: 3:00 p.m. (local time) on Wednesday, April 17, 2024

LOCATION: **BALDWIN OFFICE, 2468 W 24th Street, Baldwin, MI 49304**

Sale Condition 2.1.1 has been updated for the **Seeley Aspen** (63-011-23) timber sale. Once the contract is awarded, Spec 2.1.1 will be updated with a Timber Sale Contract Amendment:

Updated:

Spec 2.1.1 - Within Payment Unit(s) 1-7, cut all trees that are two (2) inches or more at DBH. In addition, the following exceptions apply:

- Within Payment Units 2-6, do not cut red pine, white pine, cedar, paper birch, or hemlock.
- Within Payment Units 1 & 7, do not cut oak, red pine, or white pine 22 inches or more at DBH.

Original:

Spec 2.1.1 - Within Payment Unit(s) 1-7, cut all trees that are two (2) inches or more at DBH. In addition, the following exceptions apply:

- Within Payment Units 2-6, do not cut red pine, white pine, cedar, paper birch, or hemlock.
- Within Payment Units 1 & 7, do not cut oak 22 inches or more at DBH, or any red or white pine.

We apologize for any inconvenience this may have caused. If you need assistance, please contact David Flsher at 231-745-4651 ext. 9064.



**DEPARTMENT OF NATURAL RESOURCES
STATE OF MICHIGAN
TIMBER SALE PROSPECTUS #7412**

SCHEDULED SALE DATE AND TIME: 3:00 p.m. (local time) on April 17, 2024.

LOCATION: BALDWIN OFFICE, 2468 W 24TH STREET, BALDWIN, MI 49304.

CONTACT NAME: David Flsher

PHONE NUMBER: (231) 745-4651

PROSPECTUS NOTE: The bidder is advised to inspect the sale area and review the location, estimated volumes, operating costs and contract terms of proposed sales. Please be aware that some landowners may request 60 days or more notice for access across their land.

Notice is hereby given that bids will be received by the Unit Manager, CADILLAC MANAGEMENT UNIT, for certain timber on the following described lands:

Seeley Aspen (63-011-23) / T24N, R09W, SEC. 1 , SESW,SWSE.

T24N, R09W, SEC. 10, SENW,NE,NESW,NWSE.

T24N, R09W, SEC. 11, N1/2NW.

T24N, R09W, SEC. 12, NENW,S1/2NW,N1/2NE,SWNE.

T24N, R09W, SEC. 2 , NESW,S1/2SW.

T24N, R09W, SEC. 3 , SESE.

Wexford County, Advertised Price \$282,927.95, 202.0 Acres, Aspen, Hardwood.

SALE NOTE: Access may be through private or other public land.

TIMBER SALE INFORMATION

Seeley Aspen (63-011-23)

T24N, R09W, SEC. 1; T24N, R09W, SEC. 10; T24N, R09W, SEC. 11; T24N, R09W, SEC. 12; T24N, R09W, SEC. 2; T24N, R09W, SEC. 3
Wexford County (Advertised Price \$282,927.95)

SALE NOTE: Access may be through private or other public land.

A timber sale contract for this lump sum, sealed bid timber sale will be awarded to the responsible bidder offering the highest sealed bid price. All units of volume listed below were estimated using the Inventory Manager computer program and the new Michigan taper model. Bids must be at or above the following advertised price for each product and species:

<u>PRODUCTS & SPECIES</u>	<u>ESTIMATED UNITS*</u>	<u>ADVERTISED PRICE</u>
Sawtimber		
Black/Red (Hybrid) Oak	35.2 MBF	\$ 99.00 / MBF
Mixed Aspen	876.6 MBF	\$ 92.00 / MBF
Red Maple	128.1 MBF	\$ 106.00 / MBF
Red Oak	74.3 MBF	\$ 168.00 / MBF
Red Pine	35.1 MBF	\$ 99.00 / MBF
Sugar Maple	59.6 MBF	\$ 299.00 / MBF
White Oak	45.5 MBF	\$ 107.00 / MBF
White Pine	131.2 MBF	\$ 73.00 / MBF
Pulpwood		
Balsam Fir	220 Cords	\$ 31.30 / Cord
Mixed Aspen	2,874 Cords	\$ 27.50 / Cord
Mixed Hardwood	902 Cords	\$ 23.20 / Cord
Mixed Oak	297 Cords	\$ 31.20 / Cord
Red Pine	41 Cords	\$ 44.75 / Cord
White Pine	650 Cords	\$ 29.30 / Cord

* The total volume is statistically estimated within plus (+) or minus (-) 17.79 percent. There are an estimated 8,546 cords on this timber sale, plus or minus 1,521 cords at the 95% confidence level. The estimated units are final and not subject to adjustment. Prospective bidders are urged to examine this timber and to make their own estimates of quantity and quality.

BOND AND PAYMENT SCHEDULE:

1. A bond in the amount of \$28,292.80 to insure faithful performance of the conditions of the contract will be deposited by the successful bidder within 21 days of the sale award.
2. Cutting in any sale or unit without the required advance payment would be considered a trespass.
3. Total payment must be paid in advance or according to the following schedule:
 - (a) Ten percent (10%) of the sale value must be paid within 21 days of the sale award.
 - (b) The 10% down payment will be credited towards the first unit cut.
 - (c) Payment for each of the following units must be made before cutting begins in that unit:

<u>PAYMENT UNIT NUMBER</u>	<u>PERCENT OF TOTAL SALE VALUE</u>
01	17.6%
02	12.8%
03	3.3%
04	10.2%
05	13.2%
06	4.8%
07	38.1%

4. If no cutting takes place, the 10% down payment will not be refunded.
5. Operations on the contract issued will terminate on 06/30/2026.

SALE STATISTICS

Volumes were calculated in cubic feet using the Michigan taper model. Cubic foot volume includes all wood inside bark for the product indicated. For display purposes, cubic feet were converted to cords and MBF using a simple conversion factor, e.g. 79 cubic feet per cord and 185 cubic feet per MBF. The cubic foot volumes are precise; the cords and MBF volumes are not. Cubic foot volume cannot be directly converted to cords or boards with precision.

SALE VOLUMES

The total estimated sale volume may not equal the sum of the species/products due to the nature of statistical calculations associated with double sampling methodology.

VOLUME			STATISTICAL RANGE IN CORDS	
TOTAL CUBIC FEET	TOTAL CORDS	PERCENT ERROR	MINIMUM	MAXIMUM
675,134	8,546	17.79%	7,025	10,067

VDU VOLUMES

A VDU is a Volume Determination Unit. Volumes and their associated statistics are calculated at the VDU level and summarized to the sale level. There is often a one to one relationship between a VDU and a Payment Unit, but not always, depending on the cruise design. Refer to the VDU TO PAYMENT UNIT table.

	VOLUME			RANGE IN CORDS	
VDU	TOTAL CUBIC FEET	TOTAL CORDS	PERCENT ERROR	MINIMUM	MAXIMUM
58	258,254	3,269	18.63%	2,660	3,878
62	104,556	1,323	29.69%	931	1,716
73	118,341	1,498	23.69%	1,143	1,853
103	52,002	658	63.14%	243	1,074
123	21,221	269	50.98%	132	406
125	120,760	1,529	29.00%	1,085	1,972
TOTAL:	675,134	8,546		6,194	10,898

VDU TO PAYMENT UNIT

When a VDU is associated with more than one Payment Unit (PU), the VDU volumes are assigned to the PU based on acres of the VDU within the PU.

VDU	VDU ACRES	PU	PU ACRES
58	77.1	7	77.1
62	28.8	2	28.8
73	37.7	1	37.7
103	13.1	4	13.1
123	5.7	3	5.7
125	39.6	5	29.0
		6	10.6
TOTAL:	202.0		202.0

DESCRIPTION OF TIMBER BY PU (PU)

PU	MARKET GROUP	PRODUCT	QUANTITY	UNIT	ACRES	ADVERTISE PRICE
1	Black/Red (Hybrid	Sawtimber	16.1	MBF	37.7	\$49,764.95
	Mixed Aspen		44.9	MBF		
	<i>B. T. Aspen</i>		15.8	<i>MBF</i>		
	<i>Quaking Aspen</i>		29.1	<i>MBF</i>		
	Red Maple		30.4	MBF		
	Red Oak		32.3	MBF		
	Red Pine		3.2	MBF		
	White Oak		23.0	MBF		
	White Pine		97.2	MBF		
	Balsam Fir	Pulpwood	5	Cords		
	<i>Balsam Fir</i>		5	<i>Cords</i>		
	Mixed Aspen		215	Cords		
	<i>B. T. Aspen</i>		74	<i>Cords</i>		
	<i>Quaking Aspen</i>		141	<i>Cords</i>		
	Mixed Hardwood		223	Cords		
	<i>Red Maple</i>		223	<i>Cords</i>		
	Mixed Oak		134	Cords		
	<i>/Red (Hybrid) Oak</i>		20	<i>Cords</i>		
	<i>Red Oak</i>		61	<i>Cords</i>		
	<i>White Oak</i>		53	<i>Cords</i>		
	Red Pine		1	Cords		
	White Pine		343	Cords		
2	Mixed Aspen	Sawtimber	227.7	MBF	28.8	\$36,186.10
	<i>B. T. Aspen</i>		134.8	<i>MBF</i>		
	<i>Quaking Aspen</i>		92.9	<i>MBF</i>		
	Red Maple		12.4	MBF		
	Sugar Maple		2.9	MBF		
	White Oak		7.5	MBF		
	Balsam Fir	Pulpwood	20	Cords		
	<i>Balsam Fir</i>		1.9	<i>MBF</i>		
	<i>Balsam Fir</i>		16	<i>Cords</i>		
	Mixed Aspen		319	Cords		
	<i>B. T. Aspen</i>		284	<i>Cords</i>		
	<i>Quaking Aspen</i>		35	<i>Cords</i>		
	Mixed Hardwood		115	Cords		
	<i>Ironwood</i>		0.6	<i>MBF</i>		
	<i>Ironwood</i>		6	<i>Cords</i>		
	<i>Red Maple</i>		105	<i>Cords</i>		
	<i>Sugar Maple</i>		3	<i>Cords</i>		
	Mixed Oak		6	Cords		
	<i>White Oak</i>		6	<i>Cords</i>		
3	Mixed Aspen	Sawtimber	63.9	MBF	5.7	\$9,343.70
	<i>Quaking Aspen</i>		63.9	<i>MBF</i>		
	Red Maple		3.0	MBF		
	Balsam Fir	Pulpwood	21	Cords		
	<i>Balsam Fir</i>		21	<i>Cords</i>		
	Mixed Aspen		88	Cords		
	<i>Quaking Aspen</i>		88	<i>Cords</i>		
	Mixed Hardwood		3	Cords		
	<i>Red Maple</i>		3	<i>Cords</i>		
4	Mixed Aspen	Sawtimber	32.4	MBF	13.1	\$28,738.50
	<i>B. T. Aspen</i>		17.1	<i>MBF</i>		
	<i>Quaking Aspen</i>		15.3	<i>MBF</i>		
	Red Maple		18.7	MBF		
	Sugar Maple		40.5	MBF		

DESCRIPTION OF TIMBER BY PU (PU), CON'T

PU	MARKET GROUP	PRODUCT	QUANTITY	UNIT	ACRES	ADVERTISE PRICE
4 con't	Balsam Fir	Pulpwood	110	Cords		
	<i>Balsam Fir</i>		110	<i>Cords</i>		
	Mixed Aspen		202	Cords		
	<i>B. T. Aspen</i>		140	<i>Cords</i>		
	<i>Quaking Aspen</i>		62	<i>Cords</i>		
	Mixed Hardwood		115	Cords		
	<i>Red Maple</i>		98	<i>Cords</i>		
	<i>Sugar Maple</i>		9	<i>Cords</i>		
	<i>White Ash</i>		8	<i>Cords</i>		
5	Mixed Aspen	Sawtimber	138.8	MBF	29.0	\$37,253.70
	<i>B. T. Aspen</i>		129.7	<i>MBF</i>		
	<i>Quaking Aspen</i>		9.1	<i>MBF</i>		
	Red Maple	Pulpwood	7.3	MBF		
	Sugar Maple		11.9	MBF		
	Balsam Fir		37	Cords		
	<i>Balsam Fir</i>		4.5	<i>MBF</i>		
	<i>Balsam Fir</i>		28	<i>Cords</i>		
	Mixed Aspen		599	Cords		
	<i>B. T. Aspen</i>		372	<i>Cords</i>		
	<i>Quaking Aspen</i>		227	<i>Cords</i>		
	Mixed Hardwood		106	Cords		
	<i>Black Cherry</i>		7	<i>Cords</i>		
	<i>Ironwood</i>		1	<i>Cords</i>		
	<i>Red Maple</i>		49	<i>Cords</i>		
	<i>Sugar Maple</i>		49	<i>Cords</i>		
	Mixed Oak		2	Cords		
	<i>Red Oak</i>		2	<i>Cords</i>		
6	Mixed Aspen	Sawtimber	50.7	MBF	10.6	\$13,601.70
	<i>B. T. Aspen</i>		47.4	<i>MBF</i>		
	<i>Quaking Aspen</i>		3.3	<i>MBF</i>		
	Red Maple	Pulpwood	2.7	MBF		
	Sugar Maple		4.3	MBF		
	Balsam Fir		13	Cords		
	<i>Balsam Fir</i>		1.6	<i>MBF</i>		
	<i>Balsam Fir</i>		10	<i>Cords</i>		
	Mixed Aspen		219	Cords		
	<i>B. T. Aspen</i>		136	<i>Cords</i>		
	<i>Quaking Aspen</i>		83	<i>Cords</i>		
	Mixed Hardwood		39	Cords		
	<i>Black Cherry</i>		2	<i>Cords</i>		
	<i>Ironwood</i>		1	<i>Cords</i>		
	<i>Red Maple</i>		18	<i>Cords</i>		
	<i>Sugar Maple</i>		18	<i>Cords</i>		
	Mixed Oak		1	Cords		
	<i>Red Oak</i>		1	<i>Cords</i>		
7	Black/Red (Hybrid)	Sawtimber	19.1	MBF	77.1	\$108,039.30
	Mixed Aspen		318.2	MBF		
	<i>B. T. Aspen</i>		244.2	<i>MBF</i>		
	<i>Quaking Aspen</i>		74.0	<i>MBF</i>		
	Red Maple	Pulpwood	53.6	MBF		
	Red Oak		42.0	MBF		
	Red Pine		31.9	MBF		
	White Oak		15.0	MBF		
	White Pine		34.0	MBF		
	Balsam Fir		14	Cords		

DESCRIPTION OF TIMBER BY PU (PU), CON'T

PU	MARKET GROUP	PRODUCT	QUANTITY	UNIT	ACRES	ADVERTISE PRICE
7 con't	<i>Balsam Fir</i>	<i>Pulpwood</i>	14	<i>Cords</i>		
	Mixed Aspen		1,232	Cords		
	<i>B. T. Aspen</i>		1,018	<i>Cords</i>		
	<i>Quaking Aspen</i>		214	<i>Cords</i>		
	Mixed Hardwood		301	Cords		
	<i>Red Maple</i>		301	<i>Cords</i>		
	Mixed Oak		154	Cords		
	<i>/Red (Hybrid) Oak</i>		9	<i>Cords</i>		
	<i>Red Oak</i>		25	<i>Cords</i>		
	<i>White Oak</i>		120	<i>Cords</i>		
	Red Pine		40	Cords		
	White Pine		307	Cords		
TOTAL:			1,385.6	MBF		
TOTAL:			4,984	Cords		

Sale Specific Conditions & Requirements

Sale Name: Seeley Aspen

Sale Number: 63-011-23 Seq#: 1

1 - Sale Area

1.2 - Boundaries

1.2.1 - Painted boundaries (9/19)

The sale boundary and Payment Unit boundaries are marked and identified by blue, red and yellow paint, or are unpainted and designated by a cover type change. Exterior sale boundary lines against private property are marked with blue paint. Exterior sale boundary lines against state are marked with red paint, with the exception of the Payment Unit 5 boundaries adjacent to red pine stands, which are unmarked and identified by the A9/R9 cover type change (see Timber Sale Map). Interior Payment Unit boundaries are marked with yellow paint. Retention patches are marked with red paint; no harvesting activities may occur within these areas. The painted boundary line trees are not Included Timber and are to be protected. Yellow painted trees designating an interior Payment Unit boundary are only to be cut when all surrounding Payment Units have been paid.

2 - Timber Specifications

2.1 - Included Timber

2.1.1 - Clearcut unit(s) with unmerchantable trees (6/14)

Within Payment Unit(s) 1-7, cut all trees that are two (2) inches or more at DBH. In addition, the following exceptions apply:

- Within Payment Units 2-6, do not cut red pine, white pine, cedar, paper birch, or hemlock.
- Within Payment Units 1 & 7, do not cut oak 22 inches or more at DBH, or any red or white pine.

3 - Payments

3.3 - Pre-measured Sales

3.3.4 - Dividing payment units (7/14)

Payment Unit(s) may be divided at the request of the Purchaser and upon approval of the Unit Manager. Dividing Payment Units is a contract modification which requires a Timber Sale Contract Amendment.

4 - Transportation

4.1 - Construction

4.1.6 - Road construction (1/09)

Construction of new roads or improvements of existing roads shall be done in such a way as to minimize the environmental and visual impacts. Merchantable trees shall be cut and utilized unless otherwise directed. Non-merchantable trees shall be severed and laid flat on the ground. Slash shall be scattered, and not left in windrows and kept a minimum of 10 feet back from the road edge. Stumps shall be set upright, not left on edge, and be moved at least 10 feet away from the road edge. Disturbed soil shall be feathered into the woods and not left in berms or windrows.

4.1.7 - Road closure (10/11)

All new roads built into the sale must be blocked to vehicle traffic within 30 days of completion of hauling. Overgrown roads that are reopened shall be considered new roads. In general, this will require constructing a four (4') foot high berm of stumps and logs covered with earth. These roads must be rendered impassable to cars and trucks. All stumps from road building and landing construction must be reserved to block any newly constructed roads upon completion of the sale. These stumps must be scattered along the road system to prohibit vehicular movement. Temporary berms may be required if no sale activity occurs for 30 or more consecutive days. Contact the Sale Administrator for specific details of design and placement.

4.2 - Maintenance

4.2.4 - Grading (10/16)

For completion of the sale, state forest roads must be graded. In general, this will require a road grader or bulldozer to shape up the roads after forest products have been hauled off site. This includes cleaning of drainage areas, grading, crowning and

filling with gravel, if necessary. The grading equipment to be used must be approved by the Unit Manager or his/her representative.

4.2.5 - Two wheel drive condition (2/04)

All existing trail roads on and adjacent to the sale area must be passable by two-wheel drive traffic for the duration of the sale.

4.4 - Access

4.4.1 - Private property access (3/11)

Permission for access across private land is the responsibility of the Purchaser. Should the Purchaser desire to cross private land, a copy of the written permission from the private land-owner may be required by the DNR.

4.4.2 - Alternate route on private property (2/04)

It is the Purchaser's responsibility to obtain access across private land for any routes other than the route shown on the Timber Sale Map.

5 - Operations

5.2 - Conduct of Operations

5.2.1 - Slash

5.2.1.8 - Slash height (12/08)

No slash or tree tops may exceed 24 inches in height.

5.2.2 - Hazard Trees/Snags

5.2.2.1 - Den trees (10/16)

Obvious hollow and/or den trees shall be protected and left standing unless they are a safety hazard.

5.2.3 - Operating Restrictions

5.2.3.5 - Oak wilt restriction (1/18)

Within Payment Unit(s) 1-6, unless changed by written agreement, cutting, skidding, hauling within the sale and brushing of access roads to the sale are not permitted during the period of April 15 to July 15. Operations may be allowed if specific steps are taken to prevent damaging uncut oak during the high risk period. Those steps may include completing all road brushing before April 15th and clearing a tree-length buffer along uncut oak cover before April 15th. This is necessary to reduce the spread of oak wilt. For more information, contact the Unit Manager or his/her representative.

5.2.32 - Decking/landing restoration (9/13)

All decking and landing areas must have the surface area restored to a condition equal to or better than before. This is to ensure the proper regeneration of the stand. Wood debris, chips and "cookies" from trimmings must be removed or scattered away from landing and loading areas and may not be windrowed on the edge.

5.4 - Soil Protection

5.4.1 - Rutting restriction, general (7/16)

Operations are to cease immediately if equipment and weather conditions result in rutting of roads and/or skid trails which are 12 inches or greater in depth and 50 feet in length. The Unit Manager or his/her representative may restrict hauling and/or skidding if ruts exceed the specified depth. With the Unit Manager or his/her representative's approval, the Purchaser may return to the area when the risk of rutting has decreased.

5.8 - Protection of Endangered Species

5.8.5 - Protection of raptor nests (3/13)

All trees with raptor nests will be protected if found during harvesting operations. Notification will be made to the Unit Manager or his/her representative who will notify the Wildlife Biologist so an on-site evaluation and recommendation can be made, if necessary.



TIMBER SALE MAP

This information provided by authority of Part 525, 1994 PA 451, as amended.

Sale Number	Year
63-011	23

Forest Management Unit Cadillac Management Unit	County Wexford	Mapped By Krugh	Date 08/19/2023	Page 1	of 2
Township 24N	Range 09W	Section(s) and Subdivision Sec 1:SESW, SWSE Sec 2:NESE, S1/2SW Sec 3:SESE Sec 10:SENW,NE,NESE,NWSE Sec 11:N1/2NW Sec 12:NESE,S1/2NW,N1/2NE,SWNE	Scale 1:15,840		

Cover Type

A = Aspen	H = Hemlock	N = Marsh	U = Upland Brush
B = Paper Birch	J = Jack Pine	O = Oak	UM = Upland Mixed
C = Cedar	L = Lowland Brush	P = Lowland Poplar	V = Bog or Marsh
D = Treed Bog	LM = Lowland Mixed	Q = Mixed Swamp Conifer	W = White Pine
E = Swamp Hdwoods	M = Mpl, Bch, Brch	R = Red Pine	X = Non Stocked
F = Spruce Fir	MC = Mixed Conifer	S = Black Spruce	Z = Water
G = Grass	MD = Mixed Deciduous	T = Tamarack	

Density

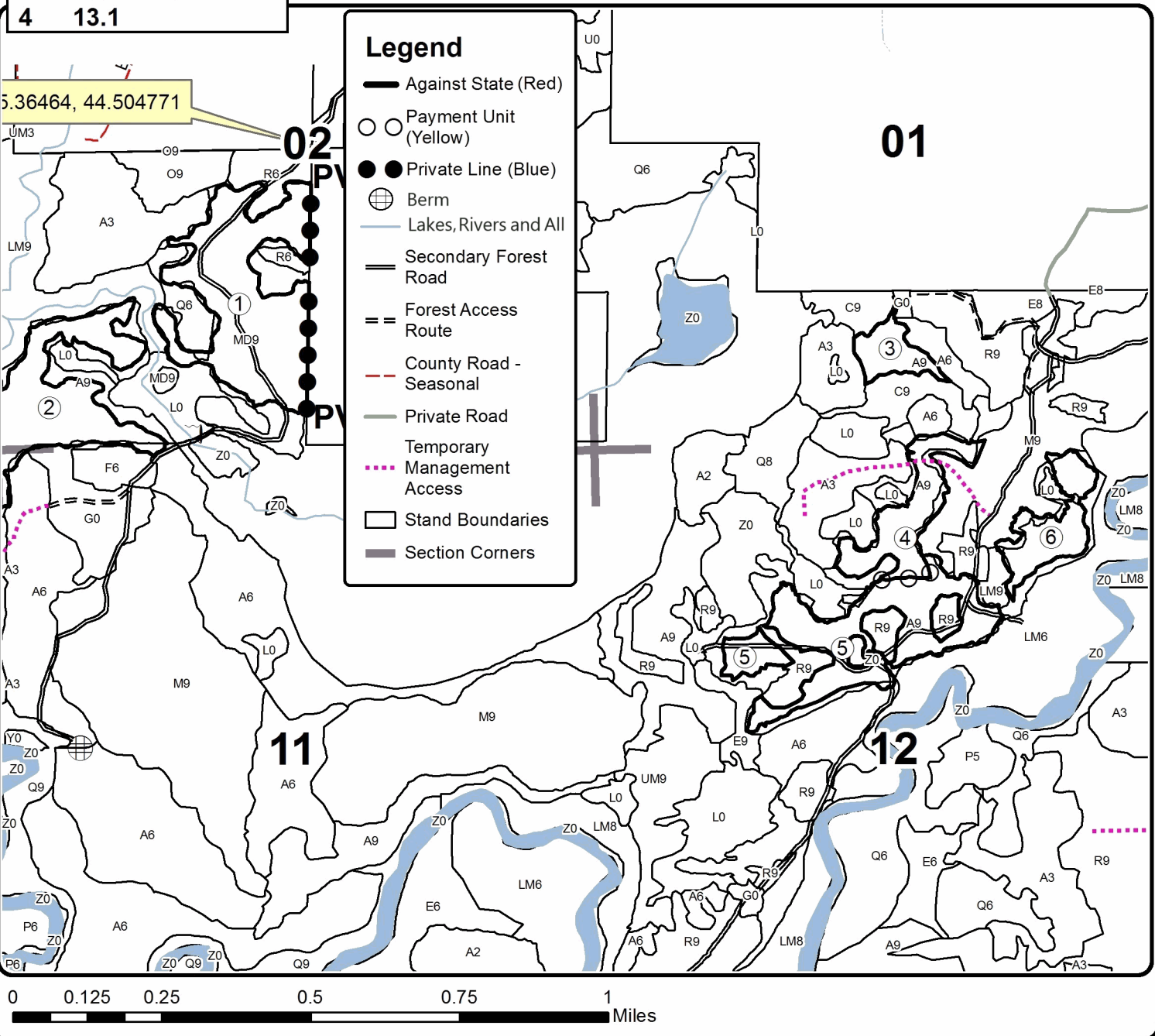
0 = Non Stocked	5 = Pole Timber Medium
1 = Seedling Sapling Poor	6 = Pole Timber Well
2 = Seedling Sapling Medium	7 = Saw Timber Poor
3 = Seedling Sapling Well	8 = Saw Timber Medium
4 = Pole Timber Poor	9 = Saw Timber Well

PU	Acres	PU	Acres
1	37.7	5	29
2	28.8	6	10.6
3	5.7	7	77.1
4	13.1		

Seeley Aspen

Compartment 126

202 Acres





TIMBER SALE MAP

This information provided by authority of Part 525, 1994 PA 451, as amended.

Sale Number	Year
63-011	23

Forest Management Unit	County	Mapped By	Date	Page	of
Cadillac Management Unit	Wexford	Krugh	08/19/2023	2	2
Township	Range	Section(s) and Subdivision(s)	Scale		
24N	09W	Sec 1:SESW, SWSE Sec2:NESE, S1/2SW Sec 3:SESE Sec 10:SENE,NE,NESE,NWSE Sec 11:N1/2NW Sec12:NESE,S1/2NW,N1/2NE,SWNE	1:15,840		

Cover Type

A = Aspen	H = Hemlock	N = Marsh	U = Upland Brush
B = Paper Birch	J = Jack Pine	O = Oak	UM = Upland Mixed
C = Cedar	L = Lowland Brush	P = Lowland Poplar	V = Bog or Marsh
D = Treed Bog	LM = Lowland Mixed	Q = Mixed Swamp Conifer	W = White Pine
E = Swamp Hdwoods	M = Mpl, Bch, Brch	R = Red Pine	X = Non Stocked
F = Spruce Fir	MC = Mixed Conifer	S = Black Spruce	Z = Water
G = Grass	MD = Mixed Deciduous	T = Tamarack	

Density

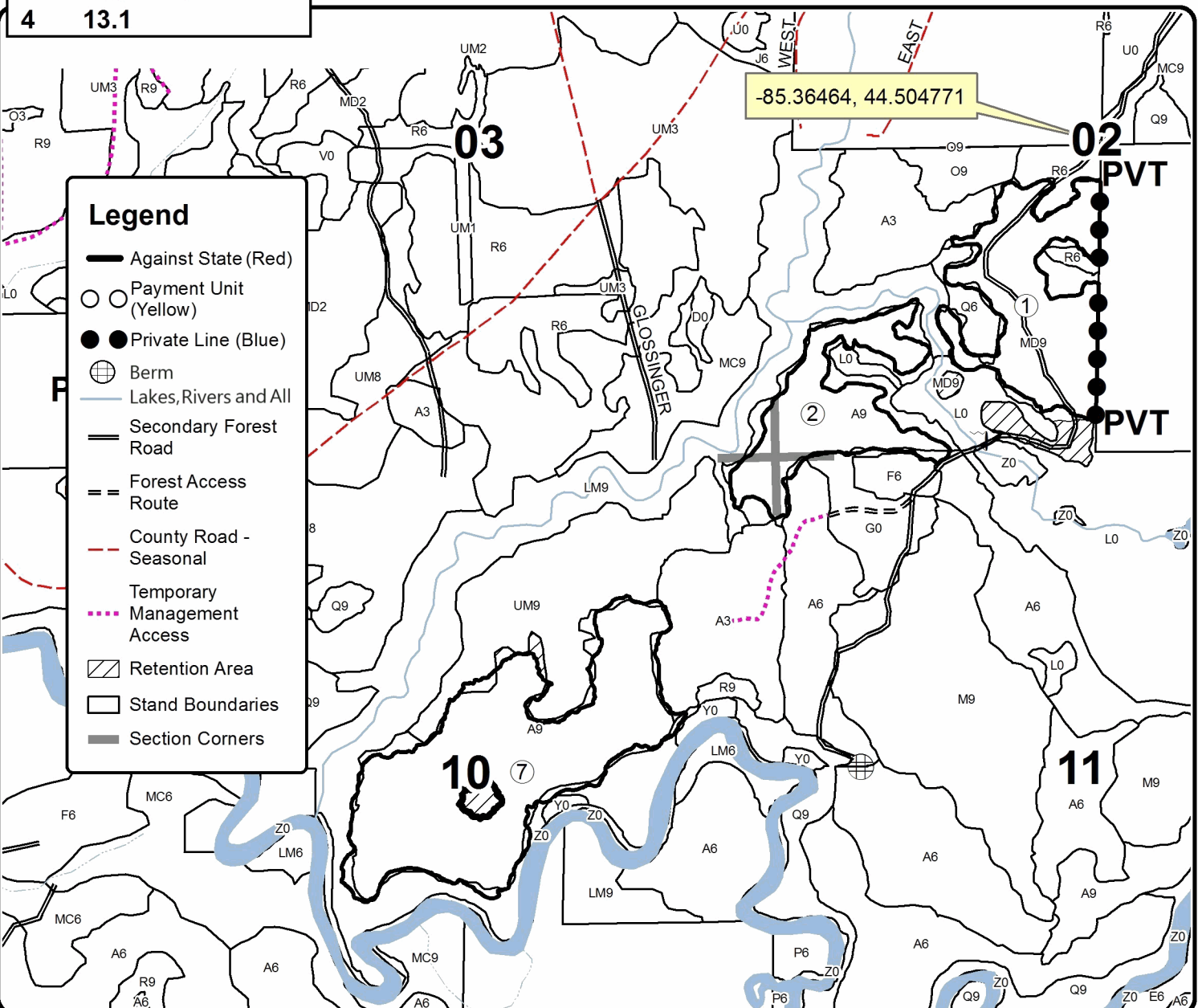
0 = Non Stocked	5 = Pole Timber Medium
1 = Seedling Sapling Poor	6 = Pole Timber Well
2 = Seedling Sapling Medium	7 = Saw Timber Poor
3 = Seedling Sapling Well	8 = Saw Timber Medium
4 = Pole Timber Poor	9 = Saw Timber Well

PU	Acres	PU	Acres
1	37.7	5	29
2	28.8	6	10.6
3	5.7	7	77.1
4	13.1		

Seeley Aspen

Compartment 126

202 Acres



Legend

- Against State (Red)
- Payment Unit (Yellow)
- Private Line (Blue)
- ⊕ Berm
- Lakes, Rivers and All
- == Secondary Forest Road
- == Forest Access Route
- - - County Road - Seasonal
- ... Temporary Management Access
- ▨ Retention Area
- Stand Boundaries
- Section Corners

0 0.125 0.25 0.5 0.75 1 Miles