



**DEPARTMENT OF NATURAL RESOURCES
STATE OF MICHIGAN
TIMBER SALE PROSPECTUS #7334**

SCHEDULED SALE DATE AND TIME: 3:00 p.m. (local time) on November 28, 2023.

LOCATION: ESCANABA MGMT UNIT, 6833 HWY'S 2, 41 & M-35, GLADSTONE, MI 49837.

CONTACT NAME: Eric Thompson

PHONE NUMBER: (906) 789-8231

PROSPECTUS NOTE: The bidder is advised to inspect the sale area and review the location, estimated volumes, operating costs and contract terms of proposed sales. Please be aware that some landowners may request 60 days or more notice for access across their land.

Notice is hereby given that bids will be received by the Unit Manager, CRYSTAL FALLS MANAGEMENT UNIT, for certain timber on the following described lands:

Blue Beary Ridge (12-005-23) / T43N, R27W, SEC. 23, SESW,S1/2SE.

T43N, R27W, SEC. 24, SWSW,N1/2SE,SESE.

T43N, R27W, SEC. 25, NW,N1/2SW.

T43N, R27W, SEC. 26, NW,NWNE,S1/2NE,W1/2SW,N1/2SE.

T43N, R27W, SEC. 26, SWSE.

T43N, R27W, SEC. 27, SESE.

Dickinson County, Advertised Price \$112,381.85, 266.1 Acres, Aspen, Spruce/Fir/Tamarack.

TIMBER SALE INFORMATION

Blue Beary Ridge (12-005-23)

T43N, R27W, SEC. 23; T43N, R27W, SEC. 24; T43N, R27W, SEC. 25; T43N, R27W, SEC. 26; T43N, R27W, SEC. 27.
Dickinson County (Advertised Price \$112,381.85)

A timber sale contract for this mixed, sealed bid timber sale will be awarded to the responsible bidder offering the highest sealed bid price. All units of volume listed below were estimated using the Inventory Manager computer program and the new Michigan taper model. Bids must be at or above the following advertised price for each product and species:

<u>PRODUCTS & SPECIES</u>	<u>ESTIMATED UNITS*</u>	<u>ADVERTISED PRICE</u>
Sawtimber		
Basswood	182.1 MBF	\$ 129.00 / MBF
Sugar Maple	48.6 MBF	\$ 194.00 / MBF
White Ash	17.3 MBF	\$ 100.00 / MBF
Pulpwood		
Balsam Fir	108 Cords	\$ 12.25 / Cord
Basswood	263 Cords	\$ 8.85 / Cord
Mixed Hardwood	639 Cords	\$ 13.05 / Cord
Mixed Spruce	1,047 Cords	\$ 16.05 / Cord
Quaking Aspen	1,563 Cords	\$ 28.60 / Cord
Tamarack	487 Cords	\$ 8.70 / Cord

* The total volume is statistically estimated within plus (+) or minus (-) 14.52 percent. There are an estimated 4,561 cords on this timber sale, plus or minus 663 cords at the 95% confidence level. The estimated units are final and not subject to adjustment. Prospective bidders are urged to examine this timber and to make their own estimates of quantity and quality.

BOND AND PAYMENT SCHEDULE:

1. A bond in the amount of \$5,619.09 to insure faithful performance of the conditions of the contract will be deposited by the successful bidder within 21 days of the sale award.
2. Cutting in any sale or unit without the required advance payment would be considered a trespass.
3. Total payment must be paid in advance or according to the following schedule :
 - (a) Ten percent (10%) of the sale value must be paid within 21 days of the sale award.
 - (b) The 10% down payment will be credited towards the first unit cut.
 - (c) Payment for each of the following units must be made before cutting begins in that unit:

PAYMENT UNIT NUMBER	PERCENT OF TOTAL SALE VALUE
01	8.9%
02	14.9%
03	16.6%
04	14.5%
05	2.8%
06	6.1%
07	25.0%
08	11.2%
4. If no cutting takes place, the 10% down payment will not be refunded.
5. Operations on the contract issued will terminate on 06/30/2027.

SALE STATISTICS

Volumes were calculated in cubic feet using the Michigan taper model. Cubic foot volume includes all wood inside bark for the product indicated. For display purposes, cubic feet were converted to cords and MBF using a simple conversion factor, e.g. 79 cubic feet per cord and 185 cubic feet per MBF. The cubic foot volumes are precise; the cords and MBF volumes are not. Cubic foot volume cannot be directly converted to cords or boards with precision.

SALE VOLUMES

The total estimated sale volume may not equal the sum of the species/products due to the nature of statistical calculations associated with double sampling methodology.

VOLUME		STATISTICAL RANGE IN CORDS		
TOTAL CUBIC FEET	TOTAL CORDS	PERCENT ERROR	MINIMUM	MAXIMUM
360,290	4,561	14.52%	3,898	5,223

VDU VOLUMES

A VDU is a Volume Determination Unit. Volumes and their associated statistics are calculated at the VDU level and summarized to the sale level. There is often a one to one relationship between a VDU and a Payment Unit, but not always, depending on the cruise design. Refer to the VDU TO PAYMENT UNIT table.

VDU	VOLUME		PERCENT ERROR	RANGE IN CORDS	
	TOTAL CUBIC FEET	TOTAL CORDS		MINIMUM	MAXIMUM
48	50,103	634	44.48%	352	916
64	48,184	610	29.25%	432	788
66	67,664	857	16.38%	716	997
73	90,389	1,144	27.32%	832	1,457
77	64,274	814	0.00%	814	814
92	39,675	502	23.95%	382	622
TOTAL:	360,290	4,561		3,527	5,594

VDU TO PAYMENT UNIT

When a VDU is associated with more than one Payment Unit (PU), the VDU volumes are assigned to the PU based on acres of the VDU within the PU.

VDU	VDU ACRES	PU	PU ACRES
48	16.7	2	16.7
64	26.5	5	8.3
66	71.9	6	18.2
		3	38.4
73	43.2	4	33.5
		7	43.2
77	67.3	1	67.3
92	40.5	8	40.5
TOTAL:	266.1		266.1

DESCRIPTION OF TIMBER BY PU (PU)

PU	MARKET GROUP	PRODUCT	QUANTITY	UNIT	ACRES	ADVERTISE PRICE
1	Mixed Spruce	Pulpwood	393	Cords	67.3	\$9,970.35
	<i>Black Spruce</i>		393	Cords		
	Tamarack		421	Cords		
2	Basswood	Pulpwood	61	Cords	16.7	\$16,748.25
	Mixed Hardwood		52	Cords		
	<i>Balsam Poplar</i>		38	Cords		
	<i>Black Cherry</i>		14	Cords		
	Quaking Aspen		543	Cords		
3	Basswood	Sawtimber	97.3	MBF	38.4	\$18,655.80
	Sugar Maple		15.4	MBF		
	White Ash		9.2	MBF		
	Basswood	Pulpwood	89	Cords		
	Mixed Hardwood		97	Cords		
	<i>Ironwood</i>		2	Cords		
	<i>Paper Birch</i>		3	Cords		
	<i>Sugar Maple</i>		77	Cords		
	<i>White Ash</i>		15	Cords		
	Quaking Aspen		5	Cords		
	4		Basswood	Sawtimber		
Sugar Maple		13.5	MBF			
White Ash		8.1	MBF			
Basswood		Pulpwood	77	Cords		
Mixed Hardwood			85	Cords		
<i>Ironwood</i>			2	Cords		
<i>Paper Birch</i>			2	Cords		
<i>Sugar Maple</i>			67	Cords		
<i>White Ash</i>			14	Cords		
Quaking Aspen			4	Cords		
5			Balsam Fir	Pulpwood	16	Cords
	Mixed Hardwood	36	Cords			
	<i>Balsam Poplar</i>	10	Cords			
	<i>Black Ash</i>	6	Cords			
	<i>Paper Birch</i>	8	Cords			
	<i>Red Maple</i>	8	Cords			
	<i>Sugar Maple</i>	4	Cords			
	Mixed Spruce	121	Cords			
	<i>Black Spruce</i>	55	Cords			
	<i>White Spruce</i>	66	Cords			
	Quaking Aspen	16	Cords			
	Tamarack	5	Cords			
	6	Balsam Fir	Pulpwood		36	Cords
Mixed Hardwood		80		Cords		
<i>Balsam Poplar</i>		23		Cords		
<i>Black Ash</i>		12		Cords		
<i>Paper Birch</i>		17		Cords		
<i>Red Maple</i>		18		Cords		
<i>Sugar Maple</i>		10		Cords		
Mixed Spruce		266		Cords		
<i>Black Spruce</i>		121		Cords		
<i>White Spruce</i>		145		Cords		
Quaking Aspen		34		Cords		
Tamarack	10	Cords				
7	Sugar Maple	Sawtimber	19.7	MBF	43.2	\$28,205.10
	Balsam Fir	Pulpwood	30	Cords		
	Basswood		36	Cords		

DESCRIPTION OF TIMBER BY PU (PU), CON'T

PU	MARKET GROUP	PRODUCT	QUANTITY	UNIT	ACRES	ADVERTISE PRICE
7 con't	Mixed Hardwood	Pulpwood	253	Cords		
	<i>Paper Birch</i>	<i>Sawtimber</i>	2.4	<i>MBF</i>		
	<i>Black Cherry</i>	<i>Pulpwood</i>	5	<i>Cords</i>		
	<i>Ironwood</i>		42	<i>Cords</i>		
	<i>Paper Birch</i>		4	<i>Cords</i>		
	<i>Sugar Maple</i>		187	<i>Cords</i>		
	<i>Yellow Birch</i>		10	<i>Cords</i>		
	Mixed Spruce		149	Cords		
	<i>Black Spruce</i>		109	<i>Cords</i>		
	<i>White Spruce</i>		40	<i>Cords</i>		
	Quaking Aspen		614	Cords		
	Tamarack		51	Cords		
	8	Balsam Fir	Pulpwood	26		
Mixed Hardwood			36	Cords		
<i>Balsam Poplar</i>			5	<i>Cords</i>		
<i>Black Cherry</i>			31	<i>Cords</i>		
Mixed Spruce			118	Cords		
<i>White Spruce</i>			118	<i>Cords</i>		
Quaking Aspen			347	Cords		
TOTAL:			248.0	MBF		
TOTAL:			4,107	Cords		

Sale Specific Conditions & Requirements

Sale Name: Blue Beary Ridge

Sale Number: 12-005-23 Seq#: 1

1 - Sale Area

1.2 - Boundaries

1.2.1 - Painted boundaries (9/19)

The sale boundary and Payment Unit boundaries are marked and identified by blue, red and yellow paint. Exterior sale boundary lines against private property are marked with blue paint. Exterior sale boundary lines against state are marked with red paint. Interior Payment Unit boundaries are marked with yellow paint. The painted boundary line trees are not Included Timber and are to be protected unless marked with orange paint. Yellow painted trees designating an interior Payment Unit boundary are only to be cut when all surrounding Payment Units have been paid.

2 - Timber Specifications

2.1 - Included Timber

2.1.2 - Clearcut unit(s) w/o unmerchantable trees (8/11)

Within Payment Unit(s) #'s 1,2,5,6,7,8, cut all trees which meet minimum piece specifications in 2.2 Utilization except Cedar, Hemlock, and Pine.

2.1.3 - Cut tree marked unit(s) (12/08)

Within Payment Unit(s) #'s 3,4, all trees are designated for cutting when marked with orange paint above and below stump height, regardless of merchantability.

2.1.11 - Description of timber note (2/04)

Note that volume within payment Unit #1 will be scaled and sold at contract prices.

3 - Payments

3.2 - Scaled Sales

3.2.1 - Scale location (2/04)

Forest products will be placed for measurement roadside. Unit 1 will be scaled.

3.4 - Damaged Timber

3.4.1 - Damaged timber (7/16)

General Condition and Requirement 3.4 Damaged Timber, defines liquidated damages for undesignated live merchantable trees which are cut or injured.

No damage is acceptable to undesignated live merchantable trees. Within the sale area, if more than 10% of trees (> 4.5" DBH) within a specified area of the sale are damaged, liquidated damages will be assessed for all trees damaged. Rates will be in accordance with General Condition and Requirement 3.4 Damaged Timber.

4 - Transportation

4.1 - Construction

4.1.6 - Road construction (1/09)

Construction of new roads or improvements of existing roads shall be done in such a way as to minimize the environmental and visual impacts. Merchantable trees shall be cut and utilized unless otherwise directed. Non-merchantable trees shall be severed and laid flat on the ground. Slash shall be scattered, and not left in windrows and kept a minimum of 10 feet back from the road edge. Stumps shall be set upright, not left on edge, and be moved at least 10 feet away from the road edge. Disturbed soil shall be feathered into the woods and not left in berms or windrows.

4.1.7 - Road closure (10/11)

All new roads built into the sale must be blocked to vehicle traffic upon completion of the sale. In general, this will require constructing a four (4') foot high berm of stumps and logs covered with earth. These roads must be rendered impassable to

cars and trucks. Contact the sale administrator for specific details of design and placement.

4.1.12 - No new roads (1/12)

No new roads will be permitted into Payment Unit #6. Skid trails only will be allowed within Payment Unit #6.

5 - Operations

5.2 - Conduct of Operations

5.2.2 - Hazard Trees/Snags

5.2.2.1 - Den trees (10/16)

Obvious hollow and/or den trees shall be protected and left standing unless they are a safety hazard.

5.2.3 - Operating Restrictions

5.2.3.3 - Bark slippage restriction (3/09)

Within Payment Unit(s) #'s 3-4, unless changed by written agreement, cutting and skidding are not permitted during the period of April 15 to July 1. This restriction is because of bark slippage.

5.2.4 - Dead and Down Creation

5.2.4.2 - Dead and down creation, hare and grouse (1/14)

To improve habitat for snowshoe hare, grouse, and other species, the Purchaser is to leave slash piles on the ground for every 2 acres within Unit #5. These 4 piles, measuring a minimum of 6 feet tall, will be scattered throughout Unit #5. In addition, within Unit #6, two windrows of slash measuring a minimum of 6 feet tall and 50 feet long must be constructed. They can be of any tree species and can be an un-merchantable piece of wood or a full tree.

5.2.22 - Operating Caution

5.2.22.1 - Operating caution (6/11)

It is recommended, but not required, that within Payment Unit(s) #1,5,6, cutting, skidding, and hauling occur during dry summer or frozen winter conditions. The reason for the recommendation is because of the wet soils.

5.4 - Soil Protection

5.4.1 - Rutting restriction, general (7/16)

Operations are to cease immediately if equipment and weather conditions result in rutting of roads and/or skid trails which is 12 inches or greater in depth and 50 feet in length. The Unit Manager or his/her representative may restrict hauling and/or skidding if ruts exceed the specified depth. With the Unit Manager or his/her representative's approval, the Purchaser may return to the area when the risk of rutting has decreased.



TIMBER SALE MAP

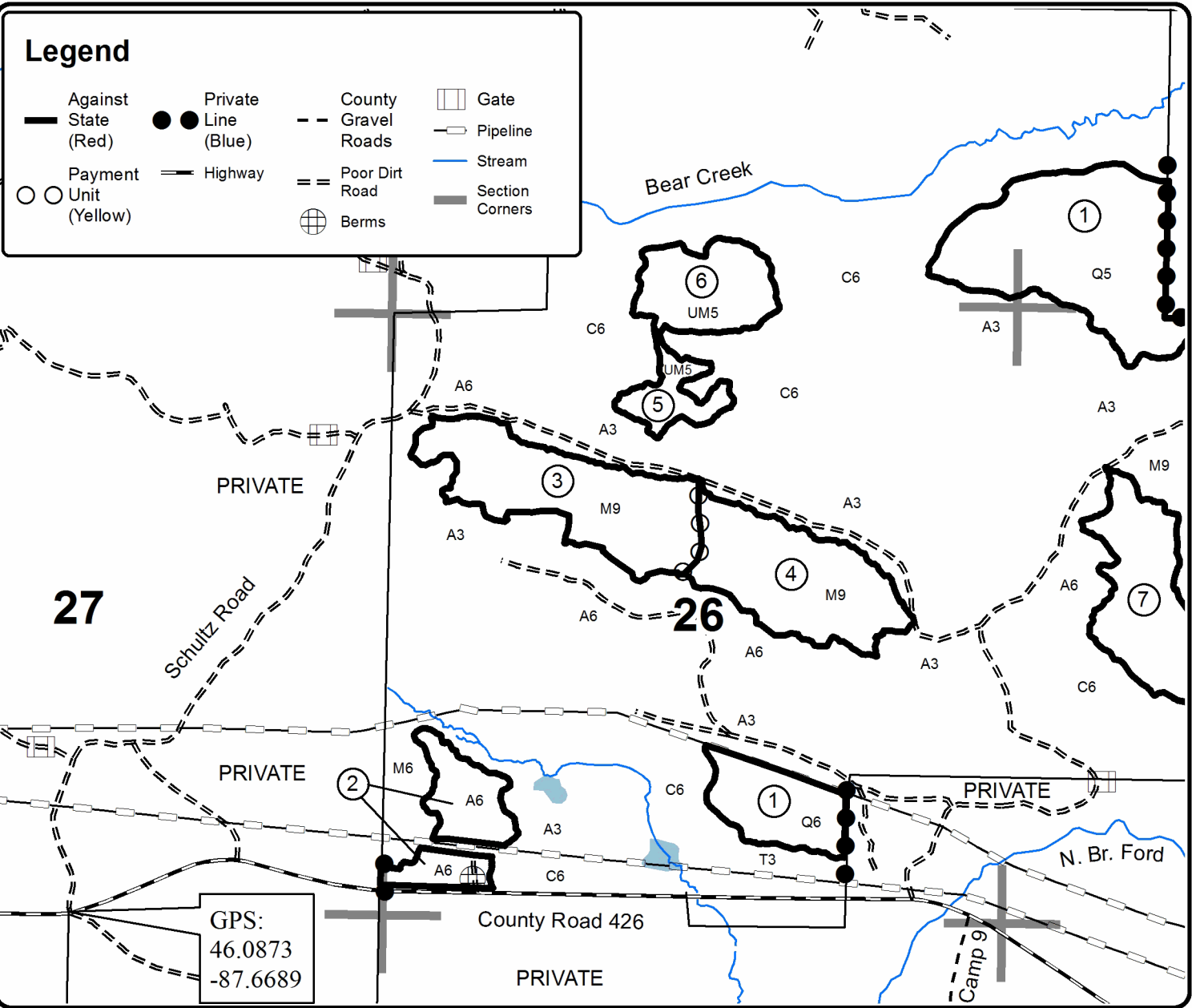
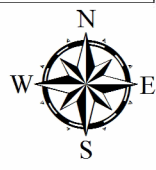
This information provided by authority of Part 525, 1994 PA 451, as amended.

Forest Management Unit Escanaba FMU	County Dickinson	Mapped By Andy Church	Date 09/06/2023	Page 1	of 2
Township 43N	Range 27W	Section(s) and Subdivision(s) Sec23 SESW,S1/2SE Sec24 SWSW,N1/2SE,SESE Sec25 NW,N1/2SW Sec26 NW,NWNE,S1/2NE,W1/2SW,N1/2SE Sec26 SWSE Sec27 SESE	Scale 1:15,840		

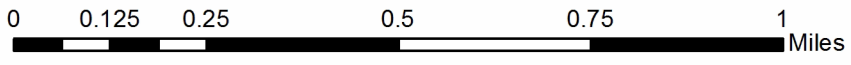
Cover Type				Density			
A = Aspen	H = Hemlock	N = Marsh	U = Upland Brush	0 = Non Stocked	5 = Pole Timber Medium		
B = Paper Birch	J = Jack Pine	O = Oak	UM = Upland Mixed	1 = Seedling Sapling Poor	6 = Pole Timber Well		
C = Cedar	L = Lowland Brush	P = Lowland Poplar	V = Bog or Marsh	2 = Seedling Sapling Medium	7 = Saw Timber Poor		
D = Tread Bog	LM = Lowland Mixed	Q = Mixed Swamp Conifer	W = White Pine	3 = Seedling Sapling Well	8 = Saw Timber Medium		
E = Swamp Hdwoods	M = Mpl, Bch, Brch	R = Red Pine	X = Non Stocked	4 = Pole Timber Poor	9 = Saw Timber Well		
F = Spruce Fir	MC = Mixed Conifer	S = Black Spruce	Z = Water				
G = Grass	MD = Mixed Deciduous	T = Tamarack					

PU	Acres	PU	Acres
1	67.3	5	8.3
2	16.7	6	18.2
3	38.4	7	43.2
4	33.5	8	40.5

Blue Beary Ridge Compartment 28 266.1 Acres



GPS:
46.0873
-87.6689





TIMBER SALE MAP

This information provided by authority of Part 525, 1994 PA 451, as amended.

Forest Management Unit Escanaba FMU		County Dickinson	Mapped By Andy Church	Date 09/06/2023	Page 2	of 2
Township 43N	Range 27W	Section(s) and Subdivision(s) Sec23 SESW,S1/2SE Sec24 SWSW,N1/2SE,SESE Sec25 NW,N1/2SW Sec26 NW,NWNE,S1/2NE,W1/2SW,N1/2SE Sec26 SWSE Sec27 SESE		Scale 1:15,840		

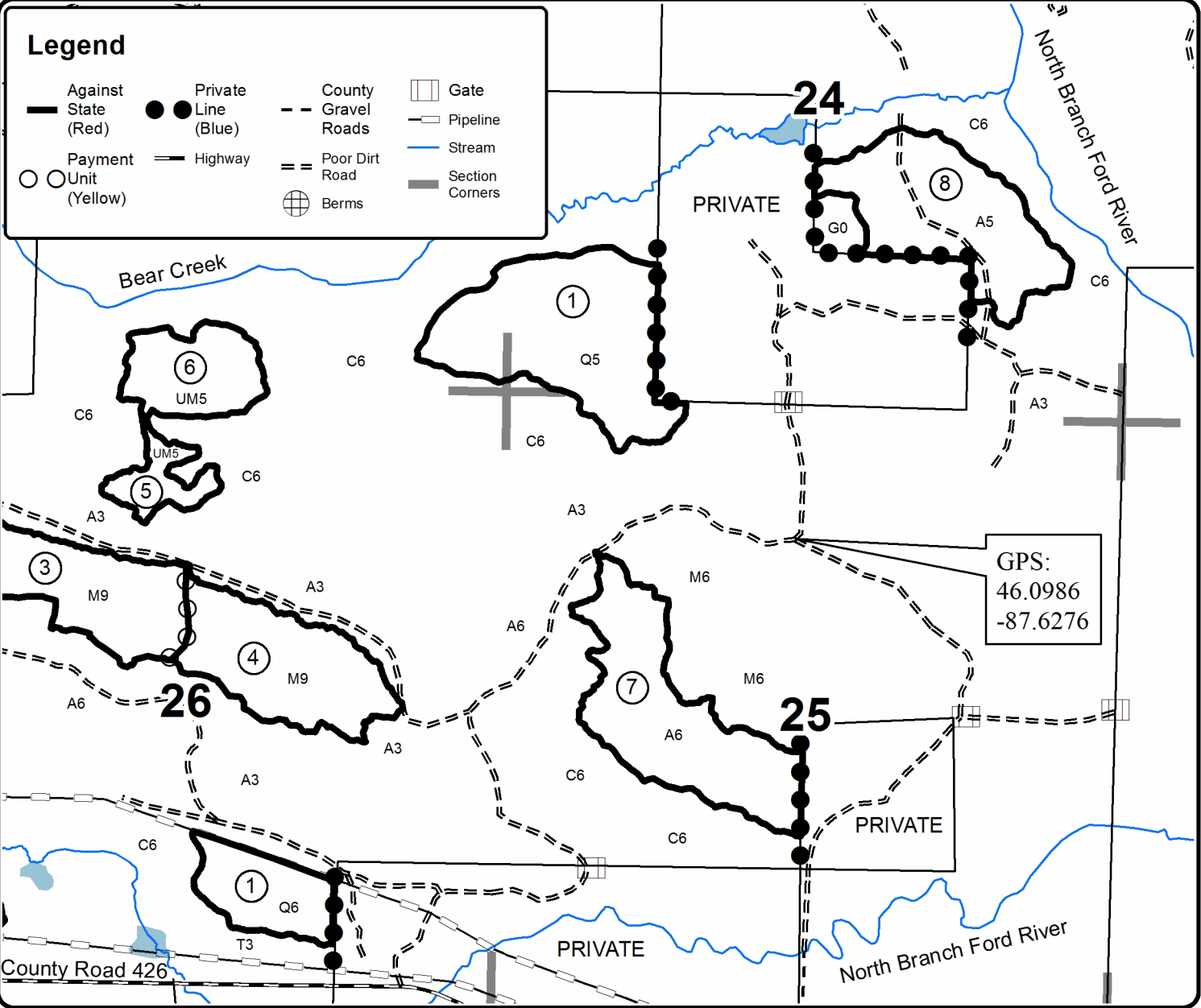
Cover Type				Density	
A = Aspen	H = Hemlock	N = Marsh	U = Upland Brush	0 = Non Stocked	5 = Pole Timber Medium
B = Paper Birch	J = Jack Pine	O = Oak	UM = Upland Mixed	1 = Seedling Sapling Poor	6 = Pole Timber Well
C = Cedar	L = Lowland Brush	P = Lowland Poplar	V = Bog or Marsh	2 = Seedling Sapling Medium	7 = Saw Timber Poor
D = Tread Bog	LM = Lowland Mixed	Q = Mixed Swamp Conifer	W = White Pine	3 = Seedling Sapling Well	8 = Saw Timber Medium
E = Swamp Hdwoods	M = Mpl, Bch, Brch	R = Red Pine	X = Non Stocked	4 = Pole Timber Poor	9 = Saw Timber Well
F = Spruce Fir	MC = Mixed Conifer	S = Black Spruce	Z = Water		
G = Grass	MD = Mixed Deciduous	T = Tamarack			

PU	Acres	PU	Acres
1	67.3	5	8.3
2	16.7	6	18.2
3	38.4	7	43.2
4	33.5	8	40.5

Blue Beary Ridge Compartment 28 266.1 Acres



QR code for GeoRef PDF



GPS:
46.0986
-87.6276

