



**DEPARTMENT OF NATURAL RESOURCES  
STATE OF MICHIGAN  
TIMBER SALE PROSPECTUS #7517**

SCHEDULED SALE DATE AND TIME: **9:00 a.m. (local time) on November 6, 2024.**

LOCATION: **GAYLORD MGMT UNIT, 1732 WEST M 32, GAYLORD, MI 49735.**

CONTACT NAME: Lucas Merrick

PHONE NUMBER: (989) 732-3541

PROSPECTUS NOTE: The bidder is advised to inspect the sale area and review the location, estimated volumes, operating costs and contract terms of proposed sales. Please be aware that some landowners may request 60 days or more notice for access across their land.

Notice is hereby given that bids will be received by the Unit Manager, GAYLORD MANAGEMENT UNIT, for certain timber on the following described lands:

Azaadi Mix (52-117-23) / T38N, R04W, SEC. 5 , S1/2SE.

T38N, R04W, SEC. 6 , S1/2NW,N1/2SW.

T38N, R04W, SEC. 8 , E1/2NE.

T38N, R04W, SEC. 9 , W1/2NW.

Emmet County, Advertised Price \$67,834.85, 119.4 Acres, Aspen, Hardwood.

SALE NOTE: Tracked equipment required (see spec 5.2.18). Dry summer or frozen winter harvest only. Access is through private property. Crane/composite mats may be necessary.

Payment Unit 1 is an optional Unit.

Access may be through private land.

# TIMBER SALE INFORMATION

## Azaadi Mix (52-117-23)

T38N, R04W, SEC. 5; T38N, R04W, SEC. 6; T38N, R04W, SEC. 8; T38N, R04W, SEC. 9.  
Emmet County (Advertised Price \$67,834.85)

SALE NOTE: Tracked equipment required (see spec 5.2.18). Dry summer or frozen winter harvest only. Access is through private property. Crane/composite mats may be necessary. Payment Unit 1 is an optional Unit.

Access may be through private land.

A timber sale contract for this lump sum, sealed bid timber sale will be awarded to the responsible bidder offering the highest sealed bid price. All units of volume listed below were estimated using the Inventory Manager computer program and the new Michigan taper model. Bids must be at or above the following advertised price for each product and species:

<u>PRODUCTS &amp; SPECIES</u>	<u>ESTIMATED UNITS*</u>	<u>ADVERTISED PRICE</u>
Sawtimber		
Basswood	11.2 MBF	\$ 75.00 / MBF
Red Maple	114.5 MBF	\$ 154.00 / MBF
White Spruce	45.8 MBF	\$ 46.00 / MBF
Pulpwood		
Balsam Fir	367 Cords	\$ 12.00 / Cord
Basswood	57 Cords	\$ 12.45 / Cord
Mixed Aspen	1,453 Cords	\$ 17.50 / Cord
Mixed Hardwood	92 Cords	\$ 19.00 / Cord
N. White Cedar	10 Cords	\$ 9.15 / Cord
Red Maple	644 Cords	\$ 19.00 / Cord
White Spruce	272 Cords	\$ 9.70 / Cord

\* The total volume is statistically estimated within plus (+) or minus (-) 9.74 percent. There are an estimated 3,241 cords on this timber sale, plus or minus 316 cords at the 95% confidence level. The estimated units are final and not subject to adjustment. Prospective bidders are urged to examine this timber and to make their own estimates of quantity and quality.

### **BOND AND PAYMENT SCHEDULE:**

1. A bond in the amount of \$3,391.74 to insure faithful performance of the conditions of the contract will be deposited by the successful bidder within 21 days of the sale award.
2. Cutting in any sale or unit without the required advance payment would be considered a trespass.
3. Total payment must be paid in advance or according to the following schedule :
  - (a) Ten percent (10%) of the sale value must be paid within 21 days of the sale award.
  - (b) The 10% down payment will be credited towards the first unit cut.
  - (c) Payment for each of the following units must be made before cutting begins in that unit:
 

PAYMENT UNIT NUMBER	PERCENT OF TOTAL SALE VALUE
01	8.1%
02	91.9%
4. If no cutting takes place, the 10% down payment will not be refunded.
5. Operations on the contract issued will terminate on 12/31/2027.

### **SALE STATISTICS**

Volumes were calculated in cubic feet using the Michigan taper model. Cubic foot volume includes all wood inside bark for the product indicated. For display purposes, cubic feet were converted to cords and MBF using a simple conversion factor, e.g. 79 cubic feet per cord and 185 cubic feet per MBF. The cubic foot volumes are precise; the cords and MBF volumes are not. Cubic foot volume cannot be directly converted to cords or boards with precision.

### **SALE VOLUMES**

The total estimated sale volume may not equal the sum of the species/products due to the nature of statistical calculations associated with double sampling methodology.

VOLUME		STATISTICAL RANGE IN CORDS		
TOTAL CUBIC FEET	TOTAL CORDS	PERCENT ERROR	MINIMUM	MAXIMUM
256,030	3,241	9.74%	2,925	3,557

**VDU VOLUMES**

A VDU is a Volume Determination Unit. Volumes and their associated statistics are calculated at the VDU level and summarized to the sale level. There is often a one to one relationship between a VDU and a Payment Unit, but not always, depending on the cruise design. Refer to the VDU TO PAYMENT UNIT table.

VDU	VOLUME		PERCENT ERROR	RANGE IN CORDS	
	TOTAL CUBIC FEET	TOTAL CORDS		MINIMUM	MAXIMUM
7	18,476	234	32.29%	158	309
17	81,054	1,026	16.24%	859	1,193
23	148,278	1,877	11.75%	1,656	2,097
81	8,222	104	45.47%	57	151
<b>TOTAL:</b>	<b>256,030</b>	<b>3,241</b>		<b>2,731</b>	<b>3,751</b>

**VDU TO PAYMENT UNIT**

When a VDU is associated with more than one Payment Unit (PU), the VDU volumes are assigned to the PU based on acres of the VDU within the PU.

VDU	VDU ACRES	PU	PU ACRES
7	16.6	1	16.6
17	39.6	2	39.6
23	56.7	2	56.7
81	6.5	1	6.5
<b>TOTAL:</b>	<b>119.4</b>		<b>119.4</b>

**DESCRIPTION OF TIMBER BY PU (PU)**

PU	MARKET GROUP	PRODUCT	QUANTITY	UNIT	ACRES	ADVERTISE PRICE	
1	Balsam Fir	Pulpwood	121	Cords	23.1	\$5,490.70	
	Mixed Aspen		80	Cords			
	<i>B. T. Aspen</i>		5	<i>Cords</i>			
	<i>Quaking Aspen</i>		75	<i>Cords</i>			
	Mixed Hardwood		20	Cords			
	<i>White Ash</i>		20	<i>Cords</i>			
	N. White Cedar		10	Cords			
	Red Maple		111	Cords			
	White Spruce		6	Cords			
2	Basswood	Sawtimber	11.2	MBF	96.3	\$62,344.15	
	Red Maple		114.5	MBF			
	White Spruce		45.8	MBF			
	Balsam Fir	Pulpwood	246	Cords			
	Basswood		57	Cords			
	Mixed Aspen		1,373	Cords			
	<i>B. T. Aspen</i>		132	<i>Cords</i>			
	<i>Quaking Aspen</i>		1,241	<i>Cords</i>			
	Mixed Hardwood		72	Cords			
	<i>Paper Birch</i>		Sawtimber	3.6			<i>MBF</i>
	<i>Sugar Maple</i>			0.5			<i>MBF</i>
	<i>Black Cherry</i>			Pulpwood			5
	<i>Paper Birch</i>	32	<i>Cords</i>				
	<i>Sugar Maple</i>	14	<i>Cords</i>				
	<i>White Ash</i>	13	<i>Cords</i>				
	Red Maple	533	Cords				
	White Spruce	266	Cords				
	TOTAL:			171.5			MBF
TOTAL:			2,895	Cords			

## Sale Specific Conditions & Requirements

Sale Name: Azaadi Mix

Sale Number: 52-117-23 Seq#: 2

### 1 - Sale Area

#### 1.2 - Boundaries

##### 1.2.1 - Painted boundaries (9/19)

The sale boundary and Payment Unit boundaries are marked and identified by blue and red paint. Exterior sale boundary lines against private property are marked with blue paint. Exterior sale boundary lines against state are marked with red paint. Retention patches are marked with red paint; no harvesting activities may occur within these areas. The painted boundary line trees are not Included Timber and are to be protected.

### 2 - Timber Specifications

#### 2.1 - Included Timber

##### 2.1.1 - Clearcut unit(s) with unmerchantable trees (6/14)

Within Payment Unit(s) 1 and 2, cut all trees that are two (2) inches or more at DBH, except within Payment Unit 2, do not cut cedar, hemlock, or mountain ash. Special protection trees identified in accordance with condition 3.4.2, within clearcutting unit boundaries, are not Included Timber and are to be protected.

##### 2.1.11 - Description of timber note (2/04)

Note that Payment Unit 1 is an optional Payment Unit and can be removed at the request of the Purchaser via a Timber Sale Contract Amendment. No damages will be charged for Payment Unit 1 if it is not harvested.

#### 2.2 - Utilization

##### 2.2.10 - No chipping tops and limbs (8/16)

Within Payment Unit(s) 1 and 2, chipping of limbs or tops is not permitted. Limbs and the remaining top must be left on site and scattered. This is to minimize the potential for erosion and to provide coarse woody debris for nutrient cycling and potential nurse logs.

### 3 - Payments

#### 3.3 - Pre-measured Sales

##### 3.3.4 - Dividing payment units (7/14)

Payment Unit(s) 2 may be divided at the request of the Purchaser and upon approval of the Unit Manager. Dividing Payment Units is a contract modification which requires a Timber Sale Contract Amendment. There will be only one division per Payment Unit.

#### 3.4 - Damaged Timber

##### 3.4.2 - Special Protection Trees (4/14)

The Purchaser shall not cut live or dead special protection trees within cutting units or clearings. Special protection trees are mountain ash. Only one sapling mountain ash was located during timber sale preparation and is GPS'd and flagged. If the Purchaser's operations have cut or damaged special protection trees through carelessness, the Purchaser shall pay \$500 as fixed, agreed and liquidated damages for each special protection tree cut or damaged. Such payment does not constitute ownership of the undesignated timber.

### 4 - Transportation

#### 4.1 - Construction

##### 4.1.7 - Road closure (10/11)

All new roads built into the sale must be blocked to vehicle traffic upon completion of the sale. In general, this may require constructing a four (4') foot high berm of stumps and logs covered with earth. These roads must be rendered impassable to cars and trucks by distributing slash and/or stumps along the roads. Temporary berms may be required if no sale activity

occurs for 30 or more consecutive days. Contact the Sale Administrator for specific details of design and placement.

#### 4.2 - Maintenance

##### 4.2.5 - Two wheel drive condition (2/04)

All existing trail roads on and adjacent to the sale area must be passable by two-wheel drive traffic for the duration of the sale.

#### 4.4 - Access

##### 4.4.1 - Private property access (3/11)

Permission for access across private land has been obtained by the DNR with the current landowners. It is the responsibility of the Purchaser to procure permission for access should ownership change throughout the duration of the contract.

### 5 - Operations

#### 5.2 - Conduct of Operations

##### 5.2.2 - Hazard Trees/Snags

###### 5.2.2.1 - Den trees (10/16)

Obvious hollow and/or den trees shall be protected and left standing unless they are a safety hazard.

##### 5.2.3 - Operating Restrictions

###### 5.2.3.1 - Operating restrictions (9/11)

Within Payment Unit(s) 1 and 2, cutting, skidding, and hauling are limited to dry summer months and frozen winter months only. This restriction is to minimize the potential for rutting on wet ground and preserve access routes across private property.

##### 5.2.4 - Dead and Down Creation

###### 5.2.4.2 - Dead and down creation, hare and grouse (1/14)

To improve habitat for snowshoe hare, grouse, and other species, the Purchaser is to leave two trees, nine (9) inches or larger in diameter on the ground for every two acres. If possible, the logs or trees should be felled so they overlap. Note these pieces should have a minimum length of ten feet. They can be of any tree species and can be an un-merchantable piece of wood or a full tree.

###### 5.2.4.4 - Dead and down creation, grouse (6/18)

To encourage grouse and other wildlife, in Payment Unit(s) 1 and 2, leave one, 12 inches diameter or larger log-length (8-foot minimum) piece on the ground for every 2 acres. These will be evenly scattered throughout the unit. This can be an unmerchantable piece or a full tree.

##### 5.2.17 - Timber Mats and Interlocking Composite Mats (5/23)

Some roads or skid trails may require extra protection such as that afforded by timber mats, interlocking composite mats, or another approved system. If available, mats may be borrowed from the DNR. A Timber Sale Contract Amendment may be used to document the Purchaser's use of the DNR's mats. Contact the sale administrator regarding availability and pick-up. Timber mats are available from various field offices. Composite mats are only available from the Grayling field office and the Marquette ICC. The Purchaser is responsible for picking up and hauling the mats to and from the site. The composite mats will require DNR staff onsite for installation and removal. Contact the sale administrator to schedule at least 30 days before desired install/removal date. All mats must be cleaned prior to drop off. This may include, but is not limited to, power washing and brushing to remove mud and debris. A charge of \$700.00 per timber mat and \$2,000.00 per composite mat will be assessed for all damaged or non-returned mats. Damage for the crane/timber mats is defined as three or more broken cants. Damage for the composite mats is defined as cracked or broken mats.

##### 5.2.18 - Equipment requirements (1/09)

It is required that all Payment Units be harvested utilizing tracked equipment. This requirement is to minimize rutting potential. No exceptions will be granted.

#### 5.4 - Soil Protection

#### 5.4.1 - Rutting restriction, general (7/16)

Operations are to cease immediately if equipment and weather conditions result in rutting of roads and/or skid trails which is 12 inches or greater in depth and 50 feet in length. The Unit Manager or his/her representative may restrict hauling and/or skidding if ruts exceed the specified depth. With the Unit Manager or his/her representative's approval, the Purchaser may return to the area when the risk of rutting has decreased.

#### 5.4.6 - Wet area protection (5/10)

No harvesting operations, including skidding and felling, are to take place within areas with standing water. These may be present in seasonally wet drainages within Payment Unit 2. Care must be taken by the Purchaser to identify and avoid operating in these areas of the timber sale.

### 5.8 - Protection of Endangered Species

#### 5.8.5 - Protection of raptor nests (3/13)

All trees with raptor nests will be protected if found during harvesting operations. Notification will be made to the Unit Manager or his/her representative who will notify the Wildlife Biologist so an on-site evaluation and recommendation can be made, if necessary.

## 7 - Other Conditions

### 7.2 - Extensions

#### 7.2.5 - Weather related extension (1/13)

If weather conditions during the operating period of this contract prevent harvesting, this sale may qualify for a weather related extension. If approved, the normal extension fee would be waived. To qualify, there must be a documented attempt each year to harvest in the difficult portion of the sale.



# TIMBER SALE MAP

This information provided by authority of Part 525, 1994 PA 451, as amended.

Forest Management Unit Gaylord		County Emmet	Mapped By TSP	Date 09/28/2023	Page 1	of 2
Township 38N	Range 04W	Section(s) and Subdivision(s) Sec 5: S1/2SE; 6: S1/2NW, N1/2SW; 8: E1/2NE; 9: W1/2NW		Scale 1:15,840		

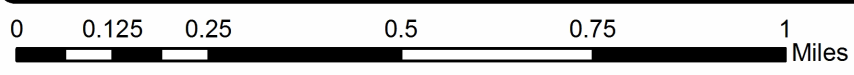
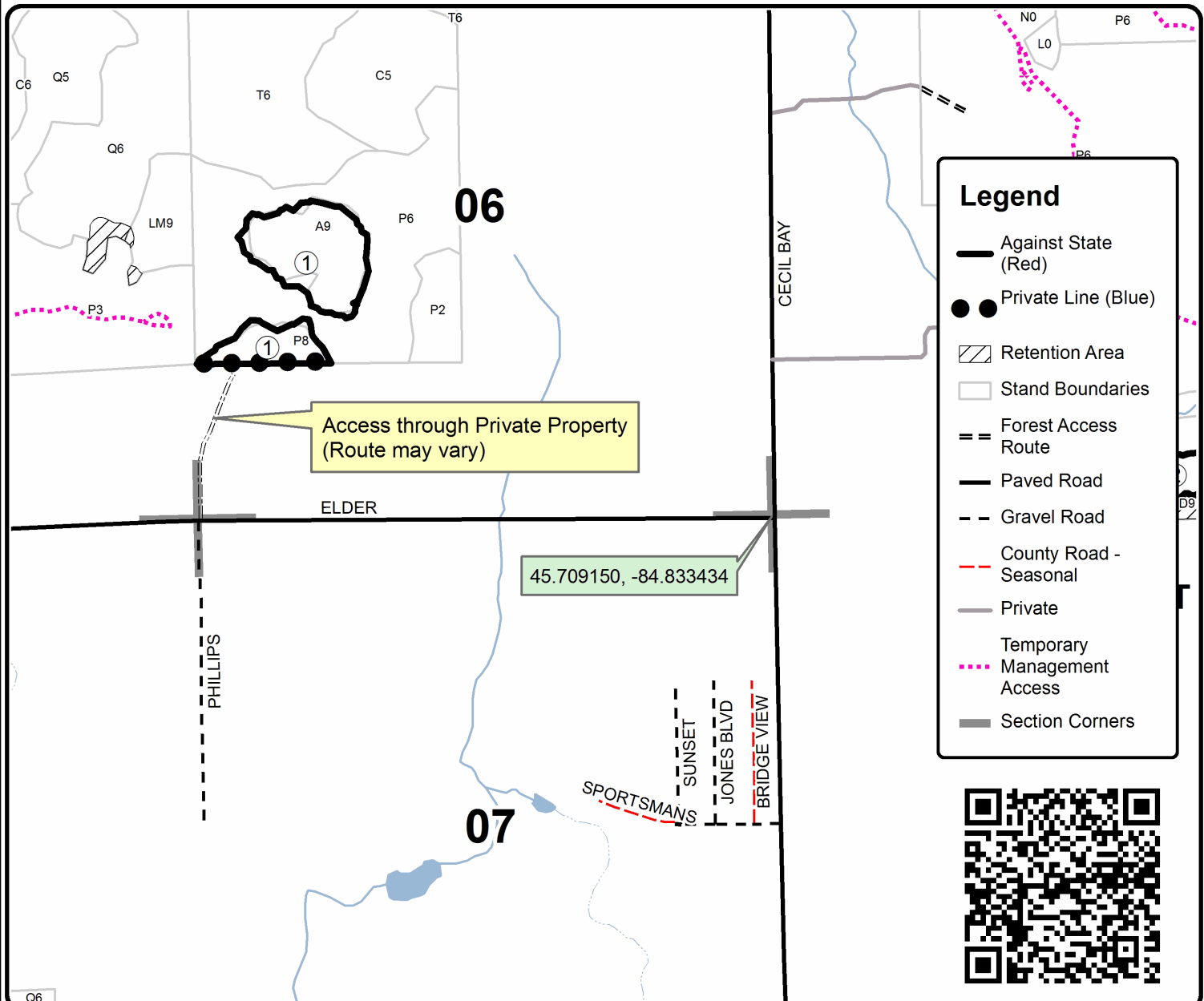
Cover Type				Density			
A = Aspen	H = Hemlock	N = Marsh	U = Upland Brush	0 = Non Stocked	5 = Pole Timber Medium		
B = Paper Birch	J = Jack Pine	O = Oak	UM = Upland Mixed	1 = Seedling Sapling Poor	6 = Pole Timber Well		
C = Cedar	L = Lowland Brush	P = Lowland Poplar	V = Bog or Marsh	2 = Seedling Sapling Medium	7 = Saw Timber Poor		
D = Treed Bog	LM = Lowland Mixed	Q = Mixed Swamp Conifer	W = White Pine	3 = Seedling Sapling Well	8 = Saw Timber Medium		
E = Swamp Hdwoods	M = Mpl, Bch, Brch	R = Red Pine	X = Non Stocked	4 = Pole Timber Poor	9 = Saw Timber Well		
F = Spruce Fir	MC = Mixed Conifer	S = Black Spruce	Z = Water				
G = Grass	MD = Mixed Deciduous	T = Tamarack					

PU	Acres	PU	Acres
1	23.1		
2	96.3		

## Azaadi Mix

### Compartment 120

119.4 Acres





# TIMBER SALE MAP

This information provided by authority of Part 525, 1994 PA 451, as amended.

Forest Management Unit Gaylord		County Emmet	Mapped By TSP	Date 09/28/2023	Page 2	of 2
Township 38N	Range 04W	Section(s) and Subdivision(s) Sec 5: S1/2SE; 6: S1/2NW, N1/2SW; 8: E1/2NE; 9: W1/2NW		Scale 1:15,840		

Cover Type				Density	
A = Aspen	H = Hemlock	N = Marsh	U = Upland Brush	0 = Non Stocked	5 = Pole Timber Medium
B = Paper Birch	J = Jack Pine	O = Oak	UM = Upland Mixed	1 = Seedling Sapling Poor	6 = Pole Timber Well
C = Cedar	L = Lowland Brush	P = Lowland Poplar	V = Bog or Marsh	2 = Seedling Sapling Medium	7 = Saw Timber Poor
D = Treed Bog	LM = Lowland Mixed	Q = Mixed Swamp Conifer	W = White Pine	3 = Seedling Sapling Well	8 = Saw Timber Medium
E = Swamp Hdwoods	M = Mpl, Bch, Brch	R = Red Pine	X = Non Stocked	4 = Pole Timber Poor	9 = Saw Timber Well
F = Spruce Fir	MC = Mixed Conifer	S = Black Spruce	Z = Water		
G = Grass	MD = Mixed Deciduous	T = Tamarack			

PU	Acres	PU	Acres
1	23.1		
2	96.3		

## Azaadi Mix

### Compartment 120

119.4 Acres

