



**DEPARTMENT OF NATURAL RESOURCES
STATE OF MICHIGAN
TIMBER SALE PROSPECTUS #7502**

SCHEDULED SALE DATE AND TIME: 10:00 a.m. (local time) on October 28, 2024.

LOCATION: SAULT DNR CUSTOMER SERVICE CENTER, 4131 S. M-129, SAULT STE MARIE, MI 49783.

CONTACT NAME: Kenny Fanelli

PHONE NUMBER: (906) 287-1380

PROSPECTUS NOTE: The bidder is advised to inspect the sale area and review the location, estimated volumes, operating costs and contract terms of proposed sales. Please be aware that some landowners may request 60 days or more notice for access across their land.

Notice is hereby given that bids will be received by the Unit Manager, SAULT STE MARIE MANAGEMENT UNIT, for certain timber on the following described lands:

Hard Times at Taylor Creek (45-007-24) / T43N, R01W, SEC. 19, SW, W1/2SE.

T43N, R01W, SEC. 20, E1/2SW, SE.

T43N, R01W, SEC. 21, NWSW.

T43N, R01W, SEC. 30, NENW.

Mackinac County, Advertised Price \$36,568.95, 199.8 Acres, Hardwood, Spruce/Fir/Tamarack, Sugar Maple.

SALE NOTE: Access may be through private land.

TIMBER SALE INFORMATION

Hard Times at Taylor Creek (45-007-24)

T43N, R01W, SEC. 19; T43N, R01W, SEC. 20; T43N, R01W, SEC. 21; T43N, R01W, SEC. 30.

Mackinac County (Advertised Price \$36,568.95)

SALE NOTE: Access may be through private land.

A timber sale contract for this lump sum, sealed bid timber sale will be awarded to the responsible bidder offering the highest sealed bid price. All units of volume listed below were estimated using the Inventory Manager computer program and the new Michigan taper model. Bids must be at or above the following advertised price for each product and species:

<u>PRODUCTS & SPECIES</u>	<u>ESTIMATED UNITS*</u>	<u>ADVERTISED PRICE</u>
Sawtimber		
Red Maple	5.8 MBF	\$ 110.00 / MBF
Sugar Maple	82.2 MBF	\$ 245.00 / MBF
Yellow Birch	1.3 MBF	\$ 56.00 / MBF
Pulpwood		
Balsam Fir	42 Cords	\$ 13.30 / Cord
Balsam Poplar	50 Cords	\$ 15.40 / Cord
Mixed Aspen	209 Cords	\$ 17.50 / Cord
Mixed Hardwood	509 Cords	\$ 15.00 / Cord
Mixed Spruce	116 Cords	\$ 15.10 / Cord
N. White Cedar	241 Cords	\$ 3.80 / Cord
Tamarack	162 Cords	\$ 1.95 / Cord
White Pine	5 Cords	\$ 22.95 / Cord

* The total volume is statistically estimated within plus (+) or minus (-) 14.54 percent. There are an estimated 1,541 cords on this timber sale, plus or minus 224 cords at the 95% confidence level. The estimated units are final and not subject to adjustment. Prospective bidders are urged to examine this timber and to make their own estimates of quantity and quality.

BOND AND PAYMENT SCHEDULE:

1. A bond in the amount of \$2,925.52 to insure faithful performance of the conditions of the contract will be deposited by the successful bidder within 21 days of the sale award.
2. Cutting in any sale or unit without the required advance payment would be considered a trespass.
3. Total payment must be paid in advance or according to the following schedule :
 - (a) Ten percent (10%) of the sale value must be paid within 21 days of the sale award.
 - (b) The 10% down payment will be credited towards the first unit cut.
 - (c) Payment for each of the following units must be made before cutting begins in that unit:

<u>PAYMENT UNIT NUMBER</u>	<u>PERCENT OF TOTAL SALE VALUE</u>
01	12.9%
02	9.0%
03	17.3%
04	15.6%
05	8.4%
06	11.6%
07	9.3%
08	10.9%
09	5.0%

4. If no cutting takes place, the 10% down payment will not be refunded.
5. Operations on the contract issued will terminate on 06/30/2028.

SALE STATISTICS

Volumes were calculated in cubic feet using the Michigan taper model. Cubic foot volume includes all wood inside bark for the product indicated. For display purposes, cubic feet were converted to cords and MBF using a simple conversion factor, e.g. 79 cubic feet per cord and 185 cubic feet per MBF. The cubic foot volumes are precise; the cords and MBF volumes are not. Cubic foot volume cannot be directly converted to cords or boards with precision.

SALE VOLUMES

The total estimated sale volume may not equal the sum of the species/products due to the nature of statistical calculations associated with double sampling methodology.

VOLUME			STATISTICAL RANGE IN CORDS	
TOTAL CUBIC FEET	TOTAL CORDS	PERCENT ERROR	MINIMUM	MAXIMUM
121,715	1,541	14.54%	1,317	1,765

VDU VOLUMES

A VDU is a Volume Determination Unit. Volumes and their associated statistics are calculated at the VDU level and summarized to the sale level. There is often a one to one relationship between a VDU and a Payment Unit, but not always, depending on the cruise design. Refer to the VDU TO PAYMENT UNIT table.

	VOLUME			RANGE IN CORDS	
VDU	TOTAL CUBIC FEET	TOTAL CORDS	PERCENT ERROR	MINIMUM	MAXIMUM
21	27,223	345	27.88%	249	441
29	17,515	222	30.95%	153	290
36	43,715	553	27.74%	400	707
37	33,262	421	27.95%	303	539
TOTAL:	121,715	1,541		1,105	1,977

VDU TO PAYMENT UNIT

When a VDU is associated with more than one Payment Unit (PU), the VDU volumes are assigned to the PU based on acres of the VDU within the PU.

VDU	VDU ACRES	PU	PU ACRES
21	78.1	6	28.4
		7	22.7
		8	27.0
29	9.7	9	9.7
36	93.7	1	22.1
		2	15.4
		3	29.5
		4	26.7
37	18.3	5	18.3
TOTAL:	199.8		199.8

DESCRIPTION OF TIMBER BY PU (PU)

PU	MARKET GROUP	PRODUCT	QUANTITY	UNIT	ACRES	ADVERTISE PRICE
1	Red Maple	Sawtimber	1.1	MBF	22.1	\$4,710.00
	Sugar Maple		12.2	MBF		
	Mixed Aspen	Pulpwood	46	Cords		
	<i>B. T. Aspen</i>		21	Cords		
	<i>Quaking Aspen</i>		25	Cords		
	Mixed Hardwood		53	Cords		
	<i>Ironwood</i>		2	Cords		
	<i>Red Maple</i>		4	Cords		
	<i>Sugar Maple</i>		47	Cords		
2	Red Maple	Sawtimber	0.8	MBF	15.4	\$3,283.00
	Sugar Maple		8.5	MBF		
	Mixed Aspen	Pulpwood	31	Cords		
	<i>B. T. Aspen</i>		14	Cords		
	<i>Quaking Aspen</i>		17	Cords		
	Mixed Hardwood		38	Cords		
	<i>Ironwood</i>		2	Cords		
	<i>Red Maple</i>		3	Cords		
	<i>Sugar Maple</i>		33	Cords		
3	Red Maple	Sawtimber	1.5	MBF	29.5	\$6,316.80
	Sugar Maple		16.3	MBF		
	Balsam Fir	Pulpwood	1	Cords		
	Mixed Aspen		60	Cords		
	<i>B. T. Aspen</i>		27	Cords		
	<i>Quaking Aspen</i>		33	Cords		
	Mixed Hardwood		73	Cords		
	<i>Ironwood</i>		4	Cords		
	<i>Red Maple</i>		6	Cords		
	<i>Sugar Maple</i>		63	Cords		
4	Red Maple	Sawtimber	1.4	MBF	26.7	\$5,706.30
	Sugar Maple		14.7	MBF		
	Balsam Fir	Pulpwood	1	Cords		
	Mixed Aspen		55	Cords		
	<i>B. T. Aspen</i>		25	Cords		
	<i>Quaking Aspen</i>		30	Cords		
	Mixed Hardwood		65	Cords		
	<i>Ironwood</i>		3	Cords		
	<i>Red Maple</i>		5	Cords		
	<i>Sugar Maple</i>		57	Cords		
5	Red Maple	Sawtimber	1.0	MBF	18.3	\$3,078.50
	Balsam Fir	Pulpwood	2	Cords		
	Balsam Poplar		24	Cords		
	Mixed Hardwood		38	Cords		
	<i>Paper Birch</i>		34	Cords		
	<i>Red Maple</i>		4	Cords		
	Mixed Spruce		84	Cords		
	<i>Black Spruce</i>		77	Cords		
	<i>White Spruce</i>		7	Cords		
	N. White Cedar		110	Cords		
	Tamarack		162	Cords		
6	Sugar Maple	Sawtimber	11.1	MBF	28.4	\$4,231.70
	Yellow Birch		0.5	MBF		
	Balsam Fir	Pulpwood	2	Cords		
	Balsam Poplar		3	Cords		
	Mixed Aspen		6	Cords		
	<i>B. T. Aspen</i>		3	Cords		

DESCRIPTION OF TIMBER BY PU (PU), CON'T

PU	MARKET GROUP	PRODUCT	QUANTITY	UNIT	ACRES	ADVERTISE PRICE
6 con't	<i>Quaking Aspen</i>	<i>Pulpwood</i>	3	<i>Cords</i>		
	Mixed Hardwood		79	Cords		
	<i>Ironwood</i>		1	<i>Cords</i>		
	<i>Paper Birch</i>		1	<i>Cords</i>		
	<i>Red Maple</i>		3	<i>Cords</i>		
	<i>Sugar Maple</i>		74	<i>Cords</i>		
	Mixed Spruce		5	Cords		
	<i>White Spruce</i>		5	<i>Cords</i>		
	White Pine		2	Cords		
	<i>White Pine</i>	<i>Sawtimber</i>	0.7	<i>MBF</i>		
	<i>White Pine</i>	<i>Pulpwood</i>	1	<i>Cords</i>		
7	Sugar Maple	Sawtimber	8.9	MBF	22.7	\$3,393.25
	Yellow Birch		0.4	MBF		
	Balsam Fir	Pulpwood	1	Cords		
	Balsam Poplar		3	Cords		
	Mixed Aspen		5	Cords		
	<i>B. T. Aspen</i>		2	<i>Cords</i>		
	<i>Quaking Aspen</i>		3	<i>Cords</i>		
	Mixed Hardwood		64	Cords		
	<i>Ironwood</i>		1	<i>Cords</i>		
	<i>Paper Birch</i>		1	<i>Cords</i>		
	<i>Red Maple</i>		2	<i>Cords</i>		
	<i>Sugar Maple</i>		60	<i>Cords</i>		
	Mixed Spruce		4	Cords		
	<i>White Spruce</i>		4	<i>Cords</i>		
	White Pine		1	Cords		
	<i>White Pine</i>	<i>Sawtimber</i>	0.5	<i>MBF</i>		
8	Sugar Maple	Sawtimber	10.5	MBF	27.0	\$3,996.15
	Yellow Birch		0.4	MBF		
	Balsam Fir	Pulpwood	2	Cords		
	Balsam Poplar		3	Cords		
	Mixed Aspen		6	Cords		
	<i>B. T. Aspen</i>		3	<i>Cords</i>		
	<i>Quaking Aspen</i>		3	<i>Cords</i>		
	Mixed Hardwood		75	Cords		
	<i>Ironwood</i>		1	<i>Cords</i>		
	<i>Paper Birch</i>		1	<i>Cords</i>		
	<i>Red Maple</i>		2	<i>Cords</i>		
	<i>Sugar Maple</i>		71	<i>Cords</i>		
	Mixed Spruce		5	Cords		
	<i>White Spruce</i>		5	<i>Cords</i>		
	White Pine		1	Cords		
	<i>White Pine</i>	<i>Sawtimber</i>	0.6	<i>MBF</i>		
9	Balsam Fir	Pulpwood	33	Cords	9.7	\$1,830.30
	Balsam Poplar		17	Cords		
	Mixed Hardwood		24	Cords		
	<i>Paper Birch</i>		5	<i>Cords</i>		
	<i>Sugar Maple</i>		1	<i>Cords</i>		
	<i>Yellow Birch</i>		18	<i>Cords</i>		
	Mixed Spruce		18	Cords		
	<i>White Spruce</i>		18	<i>Cords</i>		
	N. White Cedar		131	Cords		
TOTAL:			89.3	MBF		
TOTAL:			1,333	Cords		

Sale Specific Conditions & Requirements

Sale Name: Hard Times at Taylor Creek

Sale Number: 45-007-24 Seq#: 1

1 - Sale Area

1.2 - Boundaries

1.2.1 - Painted boundaries (9/19)

The sale boundary and Payment Unit boundaries are marked and identified by blue, red and yellow paint. Exterior sale boundary lines against private property are marked with blue paint. Exterior sale boundary lines against state are marked with red paint. Interior Payment Unit boundaries are marked with yellow paint. Retention patches are marked with red paint; no harvesting activities may occur within these areas. The painted boundary line trees are not Included Timber and are to be protected unless marked with orange paint. Yellow painted trees designating an interior Payment Unit boundary are only to be cut when all surrounding Payment Units have been paid.

2 - Timber Specifications

2.1 - Included Timber

2.1.1 - Clearcut unit(s) with unmerchantable trees (6/14)

Within Payment Unit(s) 5 and 9, cut all trees that are two (2) inches or more at DBH. Within Payment Unit 9, do not cut any pine or hemlock.

2.1.3 - Cut tree marked unit(s) (12/08)

Within Payment Unit(s) 1-4 and 6-8, all trees are designated for cutting when marked with orange paint above and below stump height, regardless of merchantability.

3 - Payments

3.3 - Pre-measured Sales

3.3.4 - Dividing payment units (7/14)

Payment Unit(s) may be divided at the request of the Purchaser and upon approval of the Unit Manager. Dividing Payment Units is a contract modification which requires a Timber Sale Contract Amendment. There will be only one division per Payment Unit.

4 - Transportation

4.1 - Construction

4.1.5 - Culverts (5/14)

Roads access to Payment Units 6-9 may require the installation of culvert(s) at the natural drainage-way indicated on the sale map. If any culverts are needed in these locations, their placement will be specified by the Sale Administrator, and they shall be installed prior to hauling. The culvert(s) shall be new, corrugated metal or plastic gauge. Culvert(s) will be a minimum of 12 inches in diameter and 24 feet in length. Culvert(s) will be provided by the Purchaser. Stream crossing permits, if needed, will be obtained by the DNR. A ninety (90) day notice will be given to the DNR before operations begin.

4.1.6 - Road construction (4/24)

Construction of new roads or improvements of existing roads shall be created only as is necessary and shall be done in such a way as to minimize the environmental and visual impacts. Merchantable trees shall be cut and utilized unless otherwise directed. Non-merchantable trees shall be severed and laid flat on the ground. Slash shall be scattered, and not left in windrows and kept a minimum of 10 feet back from the road edge. Stumps shall be set upright, not left on edge, and be moved at least 10 feet away from the road edge. Disturbed soil shall be feathered into the woods and not left in berms or windrows.

4.1.7 - Road closure (10/11)

All new roads built into the sale must be blocked to vehicle traffic upon completion of the sale. Overgrown roads that are reopened shall be considered new roads. In general, this will require constructing double earthen berms at strategic locations.

These roads must be rendered impassable to cars and trucks. All stumps from road building and landing construction must be reserved to block any newly constructed roads upon completion of the sale. These stumps must be scattered along the road system to prohibit vehicular movement. Contact the Sale Administrator for specific details of design and placement.

4.4 - Access

4.4.1 - Private property access (3/11)

Permission for access across private land will be required to access Payment Units 1-5. Securing permission for access is the responsibility of the Purchaser. A copy of the written permission from the private landowner must be given to the Unit Manager prior to the beginning of operations.

5 - Operations

5.2 - Conduct of Operations

5.2.1 - Slash

5.2.1.8 - Slash height (12/08)

No slash or tree tops may exceed 24 inches in height.

5.2.2 - Hazard Trees/Snags

5.2.2.1 - Den trees (10/16)

Obvious hollow and/or den trees shall be protected and left standing unless they are a safety hazard.

5.2.3 - Operating Restrictions

5.2.3.1 - Operating restrictions (9/11)

Within Payment Unit(s) 4 and 5, unless changed by written agreement, cutting, skidding, and hauling are limited to the period of December 1 to March 31. This restriction is because of the Deer Wintering Complex.

5.2.3.3 - Bark slippage restriction (3/09)

Within Payment Unit(s) 1-4 and 6-8, unless changed by written agreement, cutting and skidding are not permitted during the period of May 1 to July 15. This restriction is because of bark slippage.

5.2.4 - Dead and Down Creation

5.2.4.3 - Dead and down creation, dead trees (6/07)

Except as provided for in General Condition and Requirement 5.2.2, no dead trees, standing or down, are to be cut, skidded, or processed.

5.2.22 - Operating Caution

5.2.22.1 - Operating caution (6/11)

It is recommended, but not required, that within Payment Unit(s) 9, cutting, skidding, and hauling occur during dry summer or frozen winter conditions. The reason for the recommendation is due to wet conditions within these stands, causing the potential for excessive rutting and unwanted soil disturbance.

5.2.32 - Decking/landing restoration (9/13)

All decking and landing areas must have the surface area restored to a condition equal to or better than before. This is to ensure the proper regeneration of the stand. Wood debris, chips and "cookies" from trimmings must be removed or scattered away from landing and loading areas and may not be windrowed on the edge.

5.2.37 - No decking areas (12/08)

No decking is allowed within 50 feet of East Simmons Road, or on the non-DNR access roads leading to state property, without permission of the Unit Manager or his/her representative.

5.2.38 - No decking against live trees (2/04)

Cut products may not be decked against unmarked or designated leave trees.

5.4 - Soil Protection

5.4.6 - Wet area protection (5/10)

No harvesting operations, including skidding and felling, are to take place within drainages. Care must be taken by the Purchaser to identify and avoid operating in these areas of the timber sale.

5.8 - Protection of Endangered Species

5.8.5 - Protection of raptor nests (3/13)

All trees with raptor nests will be protected if found during harvesting operations. Notification will be made to the Unit Manager or his/her representative who will notify the Wildlife Biologist so an on-site evaluation and recommendation can be made, if necessary.



TIMBER SALE MAP

This information provided by authority of Part 525, 1994 PA 451, as amended.

Sale Number
45-007-24

Date
08/30/2024

Forest Management Unit
Sault Ste Marie Mgt Unit

County
Mackinac

Mapped By: Louis Radecki

Cruised By: Louis Radecki

Scale
1:24,000

Page
1

Of
1

Township 43N Range 01W Section(s) and Subdivision(s) Sec. 19 SW,W1/2SE; Sec. 20 E1/2SW,SE; Sec. 21 NWSW; Sec. 30 NENW;

Cover Type

A = Aspen	J = Jack Pine	O = Oak	U = Upland Brush
B = Paper Birch	K = Rock	P = Lowland Poplar	UM = Upland Mix Forest
C = Cedar	L = Lowland Brush	Q = Mixed Swamp Conifer	V = Bog or Marsh
D = Treed Bog	LM = Lowland Mix Forest	R = Red Pine	W = White Pine
E = Swamp Hardwoods	M = Maple, Beech, Birch	S = Black Spruce	X = Non Stocked
F = Spruce/Fir	MC = Mixed Conifer	T = Tamarack	Y = Sand
G = Grass	MD = Mixed Deciduous		Z = Water
H = Hemlock	N = Marsh		

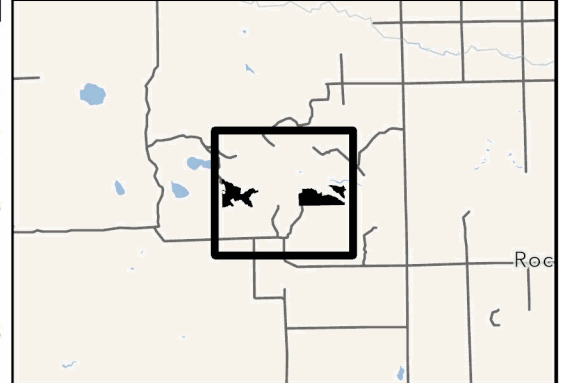
Density

0 = Non Stocked	5 = Pole Timber Medium
1 = Seedling Sapling Poor	6 = Pole Timber Well
2 = Seedling Sapling Medium	7 = Saw Timber Poor
3 = Seedling Sapling Well	8 = Saw Timber Medium
4 = Pole Timber Poor	9 = Saw Timber Well

PU #	Acres	PU #	Acres
1	22.1	6	28.4
2	15.4	7	22.7
3	29.5	8	27
4	26.7	9	9.7
5	18.3		

**Hard Times
at Taylor
Creek**
199.8 Acres

Locator Map (1:200,000)

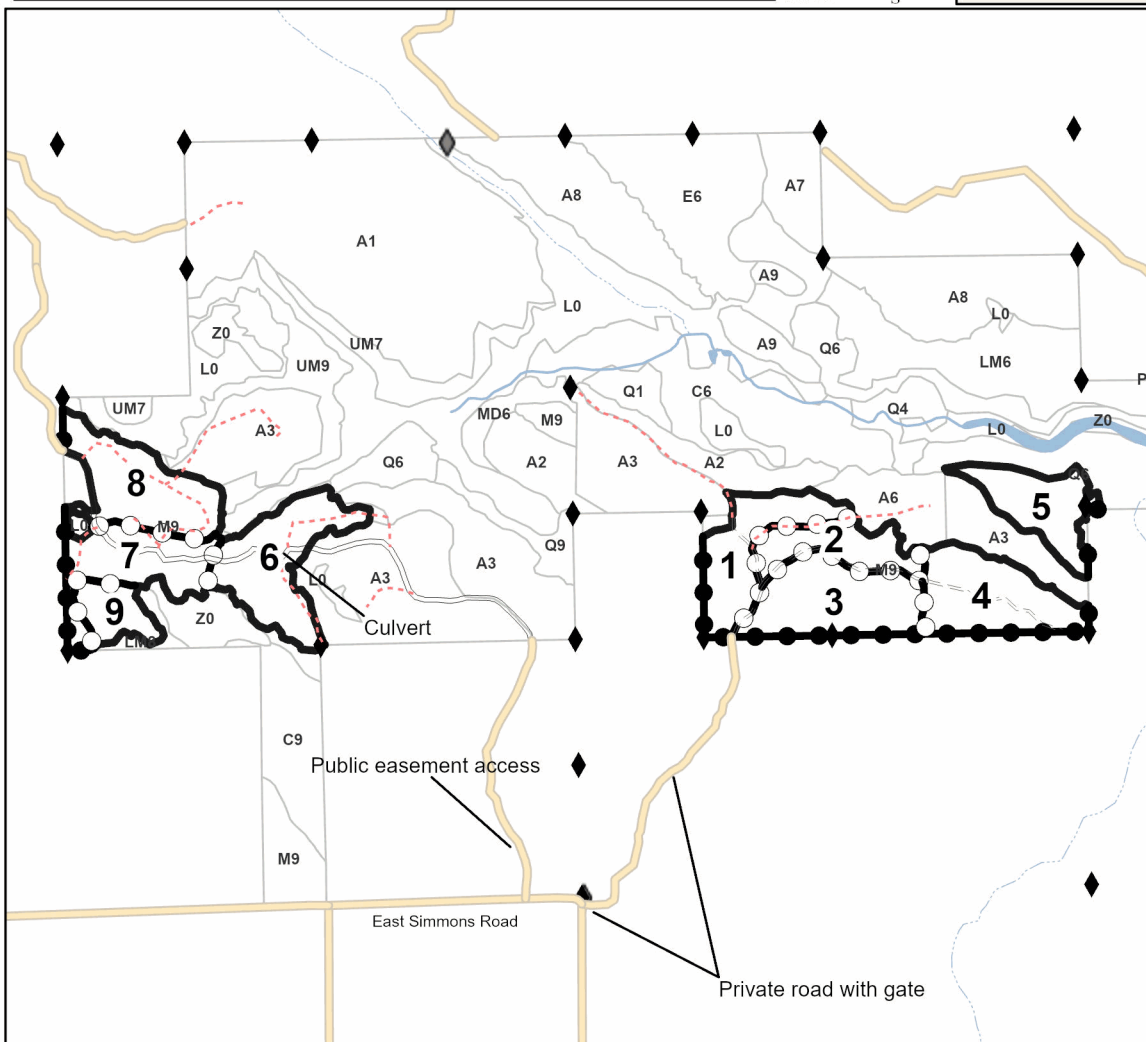


0 0.38 0.75 1.5 Miles



Legend

- Payment Unit (Red)
- Stand
- Payment Unit (Yellow)
- Private Line (Blue)
- Secondary Forest Road
- Forest Access Route
- Administrative Access Only
- Non-DNR Road
- Field Grade Corner
- Survey Grade Corner



Use QR Code to open Map in App

