



**DEPARTMENT OF NATURAL RESOURCES
STATE OF MICHIGAN
TIMBER SALE PROSPECTUS #7528**

SCHEDULED SALE DATE AND TIME: **2:00 p.m. (local time) on May 12, 2025.**

LOCATION: **GWINN MGMT UNIT, 410 WEST M 35, GWINN, MI 49841.**

CONTACT NAME: Mike Brodeur

PHONE NUMBER: (906) 346-9201

PROSPECTUS NOTE: The bidder is advised to inspect the sale area and review the location, estimated volumes, operating costs and contract terms of proposed sales. Please be aware that some landowners may request 60 days or more notice for access across their land.

Notice is hereby given that bids will be received by the Unit Manager, GWINN MANAGEMENT UNIT, for certain timber on the following described lands:

Buck Snort Aspen (32-011-24) / T47N, R23W, SEC. 22, E1/2NE.

T47N, R23W, SEC. 23, NW, W1/2NE, N1/2SW, SWSW, NWSE.

Marquette County, Advertised Price \$61,732.00, 127.1 Acres, Aspen, Hardwood.

SALE NOTE: Winter only sale due to deer yard.

TIMBER SALE INFORMATION

Buck Snort Aspen (32-011-24)
T47N, R23W, SEC. 22; T47N, R23W, SEC. 23.
Marquette County (Advertised Price \$61,732.00)

SALE NOTE: Winter only sale due to deer yard.

A timber sale contract for this lump sum, sealed bid timber sale will be awarded to the responsible bidder offering the highest sealed bid price. All units of volume listed below were estimated using the Inventory Manager computer program and the new Michigan taper model. Bids must be at or above the following advertised price for each product and species:

<u>PRODUCTS & SPECIES</u>	<u>ESTIMATED UNITS*</u>	<u>ADVERTISED PRICE</u>
Sawtimber		
Black Cherry	4.7 MBF	\$ 25.00 / MBF
Paper Birch	2.3 MBF	\$ 72.00 / MBF
Red Maple	9.2 MBF	\$ 82.00 / MBF
Sugar Maple	1.7 MBF	\$ 171.00 / MBF
Yellow Birch	0.9 MBF	\$ 21.00 / MBF
Pulpwood		
Balsam Fir	137 Cords	\$ 7.90 / Cord
Balsam Poplar	12 Cords	\$ 21.55 / Cord
Mixed Aspen	2,107 Cords	\$ 21.55 / Cord
Mixed Hardwood	1,337 Cords	\$ 9.15 / Cord
Mixed Spruce	14 Cords	\$ 8.40 / Cord
Paper Birch	117 Cords	\$ 11.00 / Cord

* The total volume is statistically estimated within plus (+) or minus (-) 12.18 percent. There are an estimated 3,721 cords on this timber sale, plus or minus 454 cords at the 95% confidence level. The estimated units are final and not subject to adjustment. Prospective bidders are urged to examine this timber and to make their own estimates of quantity and quality.

BOND AND PAYMENT SCHEDULE:

1. A bond in the amount of \$6,173.20 to insure faithful performance of the conditions of the contract will be deposited by the successful bidder within 21 days of the sale award.
2. Cutting in any sale or unit without the required advance payment would be considered a trespass.
3. Total payment must be paid in advance or according to the following schedule :
 - (a) Ten percent (10%) of the sale value must be paid within 21 days of the sale award.
 - (b) The 10% down payment will be credited towards the first unit cut.
 - (c) Payment for each of the following units must be made before cutting begins in that unit:

PAYMENT UNIT NUMBER	PERCENT OF TOTAL SALE VALUE
01	35.3%
02	30.2%
03	34.5%
4. If no cutting takes place, the 10% down payment will not be refunded.
5. Operations on the contract issued will terminate on 06/30/2029.

SALE STATISTICS

Volumes were calculated in cubic feet using the Michigan taper model. Cubic foot volume includes all wood inside bark for the product indicated. For display purposes, cubic feet were converted to cords and MBF using a simple conversion factor, e.g. 79 cubic feet per cord and 185 cubic feet per MBF. The cubic foot volumes are precise; the cords and MBF volumes are not. Cubic foot volume cannot be directly converted to cords or boards with precision.

SALE VOLUMES

The total estimated sale volume may not equal the sum of the species/products due to the nature of statistical calculations associated with double sampling methodology.

VOLUME		PERCENT ERROR	STATISTICAL RANGE IN CORDS	
TOTAL CUBIC FEET	TOTAL CORDS		MINIMUM	MAXIMUM
293,980	3,721	12.18%	3,268	4,175

VDU VOLUMES

A VDU is a Volume Determination Unit. Volumes and their associated statistics are calculated at the VDU level and summarized to the sale level. There is often a one to one relationship between a VDU and a Payment Unit, but not always, depending on the cruise design. Refer to the VDU TO PAYMENT UNIT table.

	VOLUME			RANGE IN CORDS	
VDU	TOTAL CUBIC FEET	TOTAL CORDS	PERCENT ERROR	MINIMUM	MAXIMUM
5	293,980	3,721	12.19%	3,268	4,175
TOTAL:	293,980	3,721		3,268	4,175

VDU TO PAYMENT UNIT

When a VDU is associated with more than one Payment Unit (PU), the VDU volumes are assigned to the PU based on acres of the VDU within the PU.

VDU	VDU ACRES	PU	PU ACRES
5	127.1	1	44.9
5	127.1	2	38.3
5	127.1	3	43.9
TOTAL:	381.3		127.1

DESCRIPTION OF TIMBER BY PU (PU)

PU	MARKET GROUP	PRODUCT	QUANTITY	UNIT	ACRES	ADVERTISE PRICE
1	Black Cherry	Sawtimber	1.7	MBF	44.9	\$21,791.55
	Paper Birch		0.8	MBF		
	Red Maple		3.2	MBF		
	Sugar Maple		0.6	MBF		
	Yellow Birch		0.3	MBF		
	Balsam Fir	Pulpwood	49	Cords		
	Balsam Poplar		4	Cords		
	Mixed Aspen		744	Cords		
	<i>B. T. Aspen</i>		62	<i>Cords</i>		
	<i>Quaking Aspen</i>		682	<i>Cords</i>		
	Mixed Hardwood		471	Cords		
	<i>Black Cherry</i>		89	<i>Cords</i>		
	<i>Red Maple</i>		304	<i>Cords</i>		
	<i>Sugar Maple</i>		61	<i>Cords</i>		
	<i>Yellow Birch</i>		17	<i>Cords</i>		
	Mixed Spruce		5	Cords		
	<i>White Spruce</i>		5	<i>Cords</i>		
	Paper Birch		42	Cords		
2	Black Cherry	Sawtimber	1.4	MBF	38.3	\$18,616.35
	Paper Birch		0.7	MBF		
	Red Maple		2.8	MBF		
	Sugar Maple		0.5	MBF		
	Yellow Birch		0.3	MBF		
	Balsam Fir	Pulpwood	41	Cords		
	Balsam Poplar		4	Cords		
	Mixed Aspen		635	Cords		
	<i>B. T. Aspen</i>		53	<i>Cords</i>		
	<i>Quaking Aspen</i>		582	<i>Cords</i>		
	Mixed Hardwood		404	Cords		
	<i>Black Cherry</i>		77	<i>Cords</i>		
	<i>Ironwood</i>		1	<i>Cords</i>		
	<i>Red Maple</i>		259	<i>Cords</i>		
	<i>Sugar Maple</i>		52	<i>Cords</i>		
	<i>Yellow Birch</i>		15	<i>Cords</i>		
	Mixed Spruce		4	Cords		
	<i>White Spruce</i>		4	<i>Cords</i>		
	Paper Birch		35	Cords		
3	Black Cherry	Sawtimber	1.6	MBF	43.9	\$21,324.10
	Paper Birch		0.8	MBF		
	Red Maple		3.2	MBF		
	Sugar Maple		0.6	MBF		
	Yellow Birch		0.3	MBF		
	Balsam Fir	Pulpwood	47	Cords		
	Balsam Poplar		4	Cords		
	Mixed Aspen		728	Cords		
	<i>B. T. Aspen</i>		61	<i>Cords</i>		
	<i>Quaking Aspen</i>		667	<i>Cords</i>		
	Mixed Hardwood		462	Cords		
	<i>Black Cherry</i>		88	<i>Cords</i>		
	<i>Ironwood</i>		1	<i>Cords</i>		
	<i>Red Maple</i>		297	<i>Cords</i>		
	<i>Sugar Maple</i>		59	<i>Cords</i>		
	<i>Yellow Birch</i>		17	<i>Cords</i>		
	Mixed Spruce		5	Cords		
	<i>White Spruce</i>		5	<i>Cords</i>		

DESCRIPTION OF TIMBER BY PU (PU), CON'T

PU	MARKET GROUP	PRODUCT	QUANTITY	UNIT	ACRES	ADVERTISE PRICE
3 con't	Paper Birch	Pulpwood	40	Cords		
TOTAL:			18.8	MBF		
TOTAL:			3,724	Cords		

Sale Specific Conditions & Requirements

Sale Name: Buck Snort Aspen

Sale Number: 32-011-24 Seq#: 1

1 - Sale Area

1.2 - Boundaries

1.2.1 - Painted Boundaries (9/19)

The sale boundary and Payment Unit boundaries are marked and identified by red and yellow paint. Exterior sale boundary lines against state are marked with red paint. Interior Payment Unit boundaries are marked with yellow paint. The painted boundary line trees are not Included Timber and are to be protected unless marked with orange paint. Yellow painted trees designating an interior Payment Unit boundary are only to be cut when all surrounding Payment Units have been paid.

2 - Timber Specifications

2.1 - Included Timber

2.1.1 - Clearcut Unit(s) with Unmerchantable Trees (6/14)

Within Payment Unit(s) 1-3, cut all trees that are two (2) inches or more at DBH except do not cut cedar, white pine, hemlock, or trees marked above and below stump height with green paint.

4 - Transportation

4.1 - Construction

4.1.3 - Slash and Earthen Piles (8/04)

Piles or windrows of earth along roads and landings that have been widened or constructed shall be leveled. Slash from road maintenance or construction, including stumps, shall be dispersed throughout the sale.

4.1.4 - Timber Removed for Construction (3/23)

Trees cut or damaged in the process of pre-approved road, landing, or skid trail construction will be decked in an area separate from other Designated Timber and not removed until measured by the Sale Administrator. Payment will be made at contract prices or average prices, if not on the contract.

4.1.6 - Road Construction (4/24)

Construction of new roads or improvements of existing roads shall be done in such a way as to minimize the environmental and visual impacts. Merchantable trees shall be cut and utilized unless otherwise directed. Non-merchantable trees shall be severed and laid flat on the ground. Slash shall be scattered, and not left in windrows and kept a minimum of 10 feet back from the road edge. Stumps shall be set upright, not left on edge, and be moved at least 10 feet away from the road edge. Disturbed soil shall be feathered into the woods and not left in berms or windrows.

4.1.7 - Road Closure (10/11)

All new roads built into the sale must be blocked to vehicle traffic upon completion of the sale. Overgrown roads that are reopened shall be considered new roads. In general, this will require constructing a four (4') foot high berm of stumps and logs covered with earth. These roads must be rendered impassable to cars and trucks. Temporary berms may be required if no sale activity occurs for 30 or more consecutive days. Contact the Sale Administrator for specific details of design and placement.

4.2 - Maintenance

4.2.2 - Fill Material (4/07)

To maintain roads, fill material may be needed in areas where "holes" exist or may be expected to develop. This fill material should be placed before trucking begins. Contact the Sale Administrator regarding the availability of onsite sand or gravel from adjacent state-owned lands.

4.2.3 - Road maintenance (8/13)

The following road maintenance may be required: Within 60 days of completion of hauling, or if no hauling occurs for 60 days, the Sale Administrator may require the road to be maintained and graded. This includes cleaning of drainage areas, grading,

crowning and filling with gravel, if necessary. Damages will be assessed if grading/repair does not occur.

4.2.4 - Grading (10/16)

For completion of the sale, state forest roads must be graded. In general, this will require a road grader or bulldozer to shape up the roads after forest products have been hauled off site. This includes cleaning of drainage areas, grading, crowning and filling with gravel, if necessary. The grading equipment to be used must be approved by the Unit Manager or his/her representative.

5 - Operations

5.1 - Notification

5.1.1 - Pre-sale Conference (10/16)

A pre-sale conference on site between the Purchaser and Sale Administrator is required prior to beginning any operations. The Unit Manager or his/her representative must be contacted at least 5 days in advance to schedule the conference.

5.2 - Conduct of Operations

5.2.1 - Slash

5.2.1.11 - Slash for Reforestation (3/21)

To facilitate reforestation, the Sale Area shall be left with slash evenly distributed. Bunched tops within the cutting area shall be broken up and scattered. Stumps shall be cut low to the ground. Processing sites shall not be left with a compacted layer of slash; tops from these sites shall be hauled back into the cut area and scattered.

5.2.2 - Hazard Trees/Snags

5.2.2.1 - Den Trees (10/16)

Obvious hollow and/or den trees shall be protected and left standing unless they are a safety hazard.

5.2.3 - Operating Restrictions

5.2.3.1 - Operating Restrictions (9/11)

Within Payment Unit(s) 1-3, unless changed by written agreement, cutting, skidding, and hauling are limited to frozen winter conditions (approximately December 1 to April 1). This restriction is because of wet soils and deer yard.

5.2.32 - Decking/Landing Restoration (9/13)

All decking and landing areas must have the surface area restored to a condition equal to or better than before. This is to ensure the proper regeneration of the stand. Wood debris, chips and "cookies" from trimmings must be removed or scattered away from landing and loading areas and may not be windrowed on the edge.

5.2.38 - No Decking Against Live Trees (2/04)

Cut products may not be decked against unmarked or designated leave trees.

5.4 - Soil Protection

5.4.1 - Rutting Restriction, General (7/16)

Operations are to cease immediately if equipment and weather conditions result in rutting of roads and/or skid trails which is 12 inches or greater in depth and 50 feet in length. The Unit Manager or his/her representative may restrict hauling and/or skidding if ruts exceed the specified depth. With the Unit Manager or his/her representative's approval, the Purchaser may return to the area when the risk of rutting has decreased.

5.4.2 - Skid Trails (2/04)

Skid trails up and down slopes should be avoided. If, however, this is unavoidable, these trails will be left in a non-erodible condition using water bars, logs, and slash. Placing of slash on these skid trails while logging is ongoing may alleviate need for any further action. At the direction of the Sale Administrator, seed, fertilizer, and mulch may also be required.

5.8 - Protection of Endangered Species

5.8.5 - Protection of Raptor Nests (3/13)

All trees with raptor nests will be protected if found during harvesting operations. Notification will be made to the Unit Manager or his/her representative who will notify the Wildlife Biologist so an onsite evaluation and recommendation can be

made, if necessary.

6 - Safety and Fire Prevention

6.2 - Signing

6.2.1 - Road Posting (10/20)

The Purchaser is responsible for posting and maintaining caution signs on Mangum Road, Camp Four Road and Old Camp Four Road prior to beginning operations. The road must be posted at appropriate distances from the Sale Area to warn of logging activity and truck traffic. Signs must be removed when harvest operations are suspended or completed. The Purchaser will provide these signs.

7 - Other Conditions

7.2 - Extensions

7.2.5 - Weather-Related Extension (1/13)

If weather conditions during the operating period of this contract prevent harvesting, this sale may qualify for a weather-related extension. If approved, the normal extension fee would be waived. To qualify, there must be a documented attempt each year to harvest in the difficult portion of the sale.

**TIMBER SALE MAP**

This information provided by authority of Part 525, 1994 PA 451, as amended.

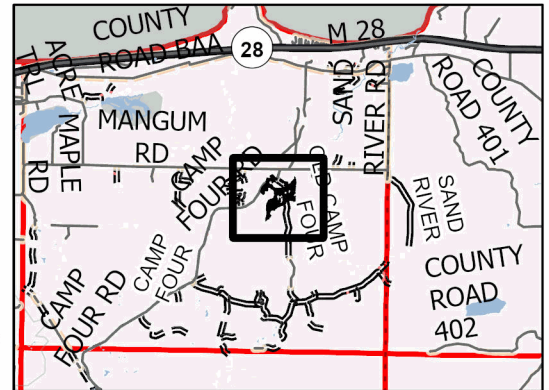
Forest Management Unit		County	Mapped By: Siler	Scale 1:15,840	Page 1	Of 1
Gwinn Mgt Unit		Marquette	Cruised By: Gwinn Staff			
Township 47N	Range 23W	Section(s) and Subdivision(s) Sec. 22 E1/2NE; Sec. 23 NW,W1/2NE,N1/2SW,SWSW,NWSE;				

Cover Type

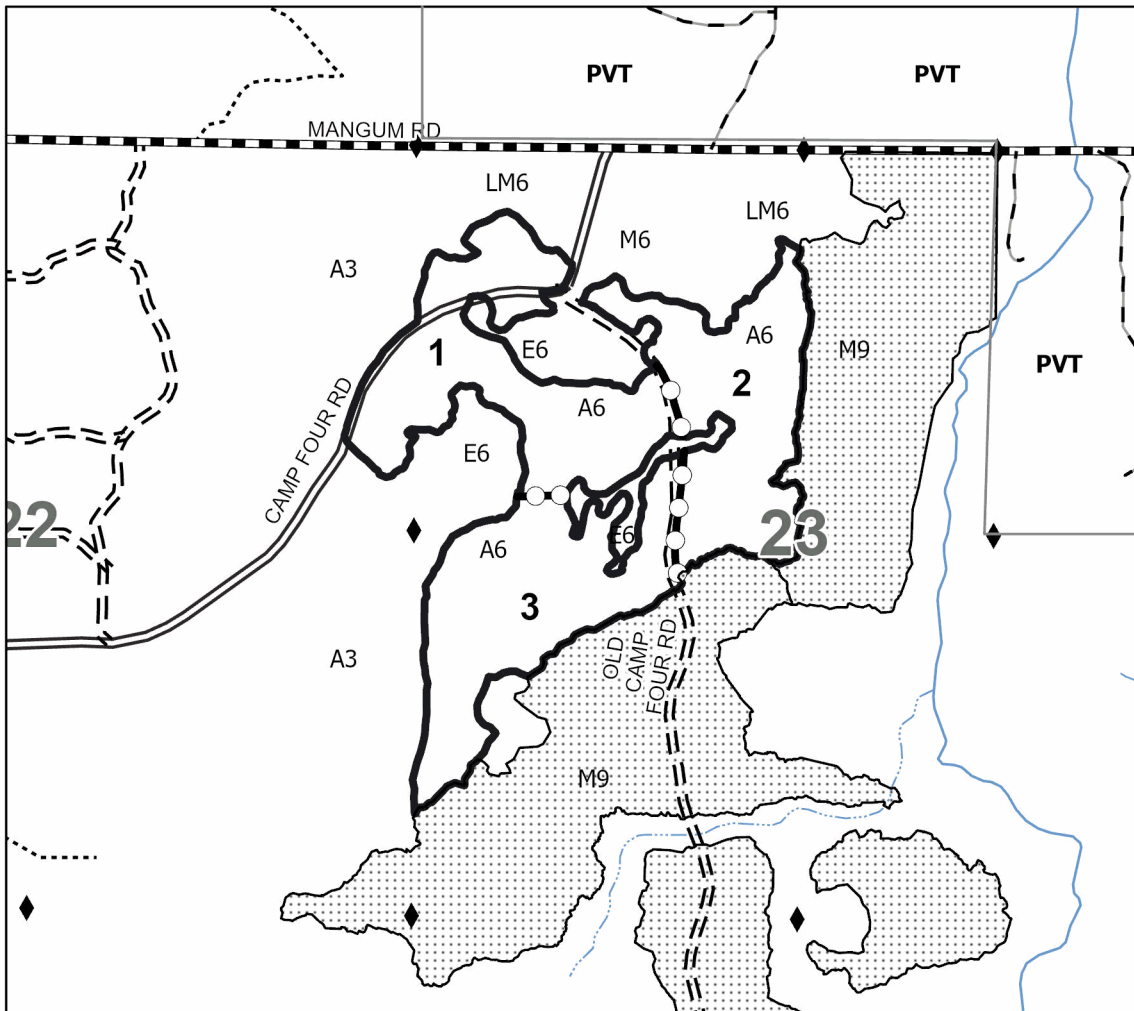
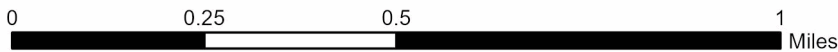
A = Aspen	J = Jack Pine	O = Oak	U = Upland Brush
B = Paper Birch	K = Rock	P = Lowland Poplar	UM = Upland Mix Forest
C = Cedar	L = Lowland Brush	Q = Mixed Swamp Conifer	V = Bog or Marsh
D = Treed Bog	LM = Lowland Mix Forest	R = Red Pine	W = White Pine
E = Swamp Hardwoods	M = Maple, Beech, Birch	S = Black Spruce	X = Non Stocked
F = Spruce/Fir	MC = Mixed Conifer	T = Tamarack	Y = Sand
G = Grass	MD = Mixed Deciduous		Z = Water
H = Hemlock	N = Marsh		

Density

0 = Non Stocked	5 = Pole Timber Medium
1 = Seedling Sapling Poor	6 = Pole Timber Well
2 = Seedling Sapling Medium	7 = Saw Timber Poor
3 = Seedling Sapling Well	8 = Saw Timber Medium
4 = Pole Timber Poor	9 = Saw Timber Well

Locator Map 1:200,000**PU # Acres**

1	44.9
2	38.3
3	43.9

**Buck Snort
Aspen****127.1 Acres****Legend**

- Against State (Red)
- Payment Unit (Yellow)
- State Boundary
- Primary Forest Road
- Forest Access Route
- Administrative Access Only
- Government Gravel/Dirt
- Private Gravel/Dirt
- Intermittent Stream
- Perennial River
- Survey Grade Corner
- Nearby Timber Sale

Use QR Code to
open Map in App