



**DEPARTMENT OF NATURAL RESOURCES  
STATE OF MICHIGAN  
TIMBER SALE PROSPECTUS #7593**

**SCHEDULED SALE DATE AND TIME: 10:00 a.m. (local time) on April 22, 2025.**

**LOCATION: GLADWIN MGMT UNIT, 801 NORTH SILVERLEAF, GLADWIN, MI 48624.**

**CONTACT NAME: Blair Tweedale**

**PHONE NUMBER: (989) 426-9205**

**PROSPECTUS NOTE:** The bidder is advised to inspect the sale area and review the location, estimated volumes, operating costs and contract terms of proposed sales. Please be aware that some landowners may request 60 days or more notice for access across their land.

Notice is hereby given that bids will be received by the Unit Manager, GLADWIN MANAGEMENT UNIT, for certain timber on the following described lands:

Triple E (73-006-24) / T17N, R05W, SEC. 27, S1/2NW, W1/2NE.

T17N, R05W, SEC. 28, SWSW.

T17N, R05W, SEC. 29, S1/2NW, N1/2SW, N1/2SE, SESE.

T17N, R05W, SEC. 34, NESW.

Clare County, Advertised Price \$202,715.20, 117.3 Acres, Aspen, Hardwood.

**SALE NOTE:** A recreation site such as a trail, pathway, or campground is within the sale area or the vicinity. Certain restrictions/specifications may be applicable including time restrictions.

# TIMBER SALE INFORMATION

Triple F (73-006-24)

T17N, R05W, SEC. 27; T17N, R05W, SEC. 28; T17N, R05W, SEC. 29; T17N, R05W, SEC. 34.

Clare County (Advertised Price \$202,715.20)

SALE NOTE: A recreation site such as a trail, pathway, or campground is within the sale area or the vicinity. Certain restrictions/specifications may be applicable including time restrictions.

A timber sale contract for this lump sum, sealed bid timber sale will be awarded to the responsible bidder offering the highest sealed bid price. All units of volume listed below were estimated using the Inventory Manager computer program and the new Michigan taper model. Bids must be at or above the following advertised price for each product and species:

<u>PRODUCTS &amp; SPECIES</u>	<u>ESTIMATED UNITS*</u>	<u>ADVERTISED PRICE</u>
Sawtimber		
B. T. Aspen	934.0 MBF	\$ 77.00 / MBF
Beech	2.9 MBF	\$ 124.00 / MBF
Black Cherry	2.5 MBF	\$ 154.00 / MBF
Black/Red (Hybrid) Oak	17.3 MBF	\$ 116.00 / MBF
Norway Spruce	23.8 MBF	\$ 54.00 / MBF
Red Maple	57.7 MBF	\$ 58.00 / MBF
Red Oak	62.0 MBF	\$ 146.00 / MBF
Red Pine	21.7 MBF	\$ 123.00 / MBF
Scotch Pine	35.4 MBF	\$ 44.00 / MBF
Sugar Maple	4.9 MBF	\$ 249.00 / MBF
White Pine	32.9 MBF	\$ 67.00 / MBF
Pulpwood		
B. T. Aspen	2,732 Cords	\$ 30.45 / Cord
Balsam Fir	13 Cords	\$ 22.85 / Cord
Mixed Hardwood	435 Cords	\$ 21.80 / Cord
Mixed Oak	248 Cords	\$ 23.10 / Cord
Mixed Spruce	176 Cords	\$ 23.00 / Cord
Paper Birch	13 Cords	\$ 24.75 / Cord
Red Pine	26 Cords	\$ 51.55 / Cord
Scotch Pine	73 Cords	\$ 16.20 / Cord
White Pine	40 Cords	\$ 28.00 / Cord

\* The total volume is statistically estimated within plus (+) or minus (-) 9.58 percent. There are an estimated 6,556 cords on this timber sale, plus or minus 628 cords at the 95% confidence level. The estimated units are final and not subject to adjustment. Prospective bidders are urged to examine this timber and to make their own estimates of quantity and quality.

## **BOND AND PAYMENT SCHEDULE:**

1. A bond in the amount of \$10,135.76 to insure faithful performance of the conditions of the contract will be deposited by the successful bidder within 21 days of the sale award.
2. Cutting in any sale or unit without the required advance payment would be considered a trespass.
3. Total payment must be paid in advance or according to the following schedule :
  - (a) Ten percent (10%) of the sale value must be paid within 21 days of the sale award.
  - (b) The 10% down payment will be credited towards the first unit cut.
  - (c) Payment for each of the following units must be made before cutting begins in that unit:

<u>PAYMENT UNIT NUMBER</u>	<u>PERCENT OF TOTAL SALE VALUE</u>
01	5.1%
02	4.3%
03	12.2%
04	76.2%
05	2.2%

4. If no cutting takes place, the 10% down payment will not be refunded.
5. Operations on the contract issued will terminate on 06/30/2028.

## **SALE STATISTICS**

Volumes were calculated in cubic feet using the Michigan taper model. Cubic foot volume includes all wood inside bark for the product indicated. For display purposes, cubic feet were converted to cords and MBF using a simple conversion factor, e.g. 79 cubic feet per cord and 185 cubic feet per MBF. The cubic foot volumes are precise; the cords and MBF volumes are not. Cubic foot volume cannot be directly converted to cords or boards with precision.

### SALE VOLUMES

The total estimated sale volume may not equal the sum of the species/products due to the nature of statistical calculations associated with double sampling methodology.

VOLUME			STATISTICAL RANGE IN CORDS	
TOTAL CUBIC FEET	TOTAL CORDS	PERCENT ERROR	MINIMUM	MAXIMUM
517,963	6,556	9.58%	5,928	7,185

### VDU VOLUMES

A VDU is a Volume Determination Unit. Volumes and their associated statistics are calculated at the VDU level and summarized to the sale level. There is often a one to one relationship between a VDU and a Payment Unit, but not always, depending on the cruise design. Refer to the VDU TO PAYMENT UNIT table.

	VOLUME			RANGE IN CORDS	
VDU	TOTAL CUBIC FEET	TOTAL CORDS	PERCENT ERROR	MINIMUM	MAXIMUM
16	391,048	4,950	10.09%	4,450	5,450
59	34,919	442	50.45%	219	665
72	21,547	273	90.39%	26	519
83	60,450	765	25.97%	566	964
92	10,000	127	83.05%	21	232
<b>TOTAL:</b>	<b>517,963</b>	<b>6,556</b>		<b>5,283</b>	<b>7,830</b>

### VDU TO PAYMENT UNIT

When a VDU is associated with more than one Payment Unit (PU), the VDU volumes are assigned to the PU based on acres of the VDU within the PU.

VDU	VDU ACRES	PU	PU ACRES
16	72.5	4	72.5
59	12.3	1	12.3
72	5.2	2	5.2
83	19.9	3	19.9
92	7.4	5	7.4
<b>TOTAL:</b>	<b>117.3</b>		<b>117.3</b>

**DESCRIPTION OF TIMBER BY PU (PU)**

PU	MARKET GROUP	PRODUCT	QUANTITY	UNIT	ACRES	ADVERTISE PRICE			
1	B. T. Aspen	Sawtimber	5.4	MBF	12.3	\$10,301.10			
	Black Cherry		1.8	MBF					
	Black/Red (Hybrid		6.7	MBF					
	Norway Spruce		19.4	MBF					
	Scotch Pine		33.0	MBF					
	B. T. Aspen	Pulpwood	31	Cords					
	Mixed Hardwood		17	Cords					
	Black Cherry		4	Cords					
	Red Maple		13	Cords					
	Mixed Oak		23	Cords					
	/Red (Hybrid) Oak	23	Cords						
	Mixed Spruce	141	Cords						
	White Spruce	Sawtimber	0.5	MBF					
	Norway Spruce		Pulpwood	95			Cords		
	White Spruce			45			Cords		
	Paper Birch	7	Cords						
	Paper Birch	Sawtimber	1.4	MBF					
	Paper Birch		Pulpwood	4			Cords		
	Scotch Pine	66		Cords					
2	B. T. Aspen	Sawtimber	51.8	MBF	5.2	\$8,734.65			
	Black/Red (Hybrid		2.5	MBF					
	Norway Spruce		4.4	MBF					
	Red Pine		7.8	MBF					
	White Pine		8.5	MBF					
	B. T. Aspen	Pulpwood	41	Cords					
	Balsam Fir		8	Cords					
	Balsam Fir		Sawtimber	1.8			MBF		
	Balsam Fir			Pulpwood			4	Cords	
	Mixed Oak		1				Cords		
	/Red (Hybrid) Oak	1	Cords						
	Mixed Spruce	35	Cords						
	White Spruce	Sawtimber	1.6	MBF					
	Norway Spruce		Pulpwood	31			Cords		
	White Spruce			1			Cords		
	Red Pine	4	Cords						
	White Pine	8	Cords						
	3	B. T. Aspen	Sawtimber	99.6			MBF	19.9	\$24,806.60
		Beech		1.8			MBF		
Black/Red (Hybrid		4.6		MBF					
Red Maple		13.3		MBF					
Red Oak		14.8		MBF					
Red Pine		13.9	MBF						
Scotch Pine		2.4	MBF						
White Pine		9.8	MBF						
B. T. Aspen		Pulpwood	189	Cords					
Balsam Fir			5	Cords					
Balsam Fir			5	Cords					
Mixed Hardwood			40	Cords					
Beech			2	Cords					
Red Maple		38	Cords						
Mixed Oak		112	Cords						
/Red (Hybrid) Oak		25	Cords						
Red Oak		85	Cords						
White Oak		2	Cords						
Paper Birch		6	Cords						

**DESCRIPTION OF TIMBER BY PU (PU), CON'T**

PU	MARKET GROUP	PRODUCT	QUANTITY	UNIT	ACRES	ADVERTISE PRICE			
3 con't	<i>Paper Birch</i>	<i>Sawtimber</i>	1.7	<i>MBF</i>					
	<i>Paper Birch</i>	<i>Pulpwood</i>	3	<i>Cords</i>					
	Red Pine		22	Cords					
	Scotch Pine		7	Cords					
	White Pine		9	Cords					
4	B. T. Aspen	Sawtimber	768.9	MBF	72.5	\$154,385.35			
	Beech		1.1	MBF					
	Red Maple		44.4	MBF					
	Red Oak		35.9	MBF					
	Sugar Maple		4.9	MBF					
	White Pine		14.6	MBF					
	B. T. Aspen	Pulpwood	2,457	Cords					
	Mixed Hardwood		351	Cords					
	<i>Basswood</i>		9	<i>Cords</i>					
	<i>Beech</i>		6	<i>Cords</i>					
	<i>Red Maple</i>		318	<i>Cords</i>					
	<i>Sugar Maple</i>		11	<i>Cords</i>					
	<i>White Ash</i>		7	<i>Cords</i>					
	Mixed Oak		83	Cords					
	<i>/Red (Hybrid) Oak</i>		26	<i>Cords</i>					
	<i>Red Oak</i>		52	<i>Cords</i>					
	<i>White Oak</i>		5	<i>Cords</i>					
	White Pine		23	Cords					
	5	B. T. Aspen	Sawtimber	8.3			MBF	7.4	\$4,487.50
		Black Cherry		0.7			MBF		
Black/Red (Hybrid			3.5	MBF					
Red Oak			11.3	MBF					
B. T. Aspen		Pulpwood	14	Cords					
Mixed Hardwood			27	Cords					
<i>Black Cherry</i>			5	<i>Cords</i>					
<i>Red Maple</i>			22	<i>Cords</i>					
Mixed Oak			29	Cords					
<i>White Oak</i>		<i>Sawtimber</i>	2.8	<i>MBF</i>					
<i>/Red (Hybrid) Oak</i>		<i>Pulpwood</i>	6	<i>Cords</i>					
<i>Red Oak</i>			13	<i>Cords</i>					
<i>White Oak</i>			4	<i>Cords</i>					
TOTAL:			1,195.1	MBF					
TOTAL:			3,756	Cords					

## **Sale Specific Conditions & Requirements**

**Sale Name: Triple F**

**Sale Number: 73-006-24 Seq#: 2**

### **1 - Sale Area**

#### **1.2 - Boundaries**

##### **1.2.1 - Painted Boundaries (9/19)**

The sale boundary and Payment Unit boundaries are marked and identified by blue and red paint. Exterior sale boundary lines against private property are marked with blue paint. Exterior sale boundary lines against state are marked with red paint. Retention patches are marked with red paint; no harvesting activities may occur within these areas. The painted boundary line trees are not Included Timber and are to be protected.

### **2 - Timber Specifications**

#### **2.1 - Included Timber**

##### **2.1.7 - Leave Tree Marked Unit(s) (6/14)**

Within Payment Unit(s) 1-5, cut all trees that are two (2) inches or more at DBH, except do not cut trees marked with green paint above and below stump height.

#### **2.2 - Utilization**

##### **2.2.9 - No Chipping Permitted (12/08)**

Within Payment Unit(s) 2-5, all wood must be removed by whole tree, tree segment, or roundwood. No chipping is permitted.

### **3 - Payments**

#### **3.3 - Pre-measured Sales**

##### **3.3.4 - Dividing Payment Units (7/14)**

Payment Unit(s) may be divided at the request of the Purchaser and upon approval of the Unit Manager. Dividing Payment Units is a contract modification which requires a Timber Sale Contract Amendment. There will be only one division per Payment Unit.

### **4 - Transportation**

#### **4.1 - Construction**

##### **4.1.6 - Road Construction (4/24)**

Construction of new roads or improvements of existing roads shall be done in such a way as to minimize the environmental and visual impacts. Merchantable trees shall be cut and utilized unless otherwise directed. Non-merchantable trees shall be severed and laid flat on the ground. Slash shall be scattered, and not left in windrows and kept a minimum of 10 feet back from the road edge. Stumps shall be set upright, not left on edge, and be moved at least 10 feet away from the road edge. Disturbed soil shall be feathered into the woods and not left in berms or windrows.

##### **4.1.7 - Road Closure (10/11)**

All new roads built into the sale must be blocked to vehicle traffic upon completion of the sale. All new roads built into the sale must be blocked to vehicle traffic within 30 days of completion of hauling. Overgrown roads that are reopened shall be considered new roads. In general, this will require constructing a four (4') foot high berm of stumps and logs covered with earth. These roads must be rendered impassable to cars and trucks. All stumps from road building and landing construction must be reserved to block any newly constructed roads upon completion of the sale. These stumps must be scattered along the road system to prohibit vehicular movement. Contact the Sale Administrator for specific details of design and placement.

### **5 - Operations**

#### **5.2 - Conduct of Operations**

##### **5.2.1 - Slash**

#### 5.2.1.8 - Slash Height (12/08)

No slash or tree tops may exceed 24 inches in height.

#### 5.2.2 - Hazard Trees/Snags

##### 5.2.2.1 - Den Trees (10/16)

Obvious hollow and/or den trees shall be protected and left standing unless they are a safety hazard.

#### 5.2.3 - Operating Restrictions

##### 5.2.3.1 - Operating Restrictions (9/11)

Within Payment Unit(s) 2, unless changed by written agreement, cutting, skidding, and hauling are limited to snow free conditions. This restriction is to facilitate natural regeneration of spruce and fir.

#### 5.2.4 - Dead and Down Creation

##### 5.2.4.4 - Dead and Down Creation, Grouse (6/18)

To encourage grouse and other wildlife, in Payment Unit(s) 3 and 4, leave one 12-inch or larger diameter whole tree on the ground for every 3 acres. Trees should be scattered throughout the sale and at least two chains from any roads, two-tracks, or trails open to vehicles, or positioned per the Sale Administrator's instructions. Stumps must be at least 3 feet tall.

##### 5.2.38 - No Decking Against Live Trees (2/04)

Cut products may not be decked against unmarked or designated leave trees.

#### 5.4 - Soil Protection

##### 5.4.4 - Slope Protection (9/19)

Skid trails and roads on slopes shall be water barred with slash, stumps, and/or clean straw bales native to the area as soon as use is complete to prevent erosion.

### 6 - Safety and Fire Prevention

#### 6.2 - Signing

##### 6.2.1 - Road Posting (10/20)

The Purchaser is responsible for posting and maintaining caution signs on Maple Grove, Bringold, and Washington prior to beginning operations. The road must be posted on the county road, approximately 100 yards from entrance to the Sale Area to warn of logging activity and truck traffic. Signs must be removed when harvest operations are suspended or completed. The Purchaser will provide these signs.

##### 6.2.3 - Recreational Trail Posting (10/20)

The Purchaser is responsible for posting and maintaining caution signs on the Pere Marquette Rail Trail prior to beginning operations. The trail must be posted at appropriate distances from the Sale Area to warn of logging activity and truck traffic at both ends of the trail. Signs must be removed when harvest operations are suspended or completed. The Purchaser will provide these signs.

**TIMBER SALE MAP**

This information provided by authority of Part 525, 1994 PA 451, as amended.

Sale Number  
**73-006-24**Date  
**01/23/2025**

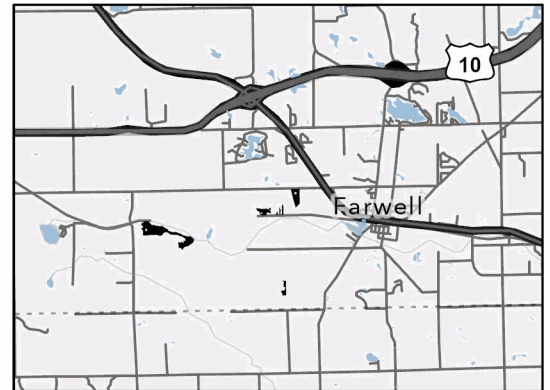
Forest Management Unit		County	Mapped By: Owens	Scale	Page	Of
Gladwin Mgt Unit		Clare	Cruised By: Owens	1:7,920	1	3
Township 17N	Range 05W	Section(s) and Subdivision(s) Sec. 27 S1/2NW,W1/2NE; Sec. 28 SWSW; Sec. 29 S1/2NW,N1/2SW,N1/2SE,SESE; Sec. 34 NESW;				

**Cover Type**

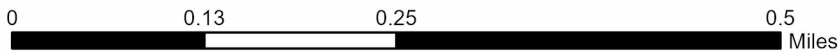
A = Aspen	J = Jack Pine	O = Oak	U = Upland Brush
B = Paper Birch	K = Rock	P = Lowland Poplar	UM = Upland Mix Forest
C = Cedar	L = Lowland Brush	Q = Mixed Swamp Conifer	V = Bog or Marsh
D = Treed Bog	LM = Lowland Mix Forest	R = Red Pine	W = White Pine
E = Swamp Hardwoods	M = Maple, Beech, Birch	S = Black Spruce	X = Non Stocked
F = Spruce/Fir	MC = Mixed Conifer	T = Tamarack	Y = Sand
G = Grass	MD = Mixed Deciduous		Z = Water
H = Hemlock	N = Marsh		

**Density**

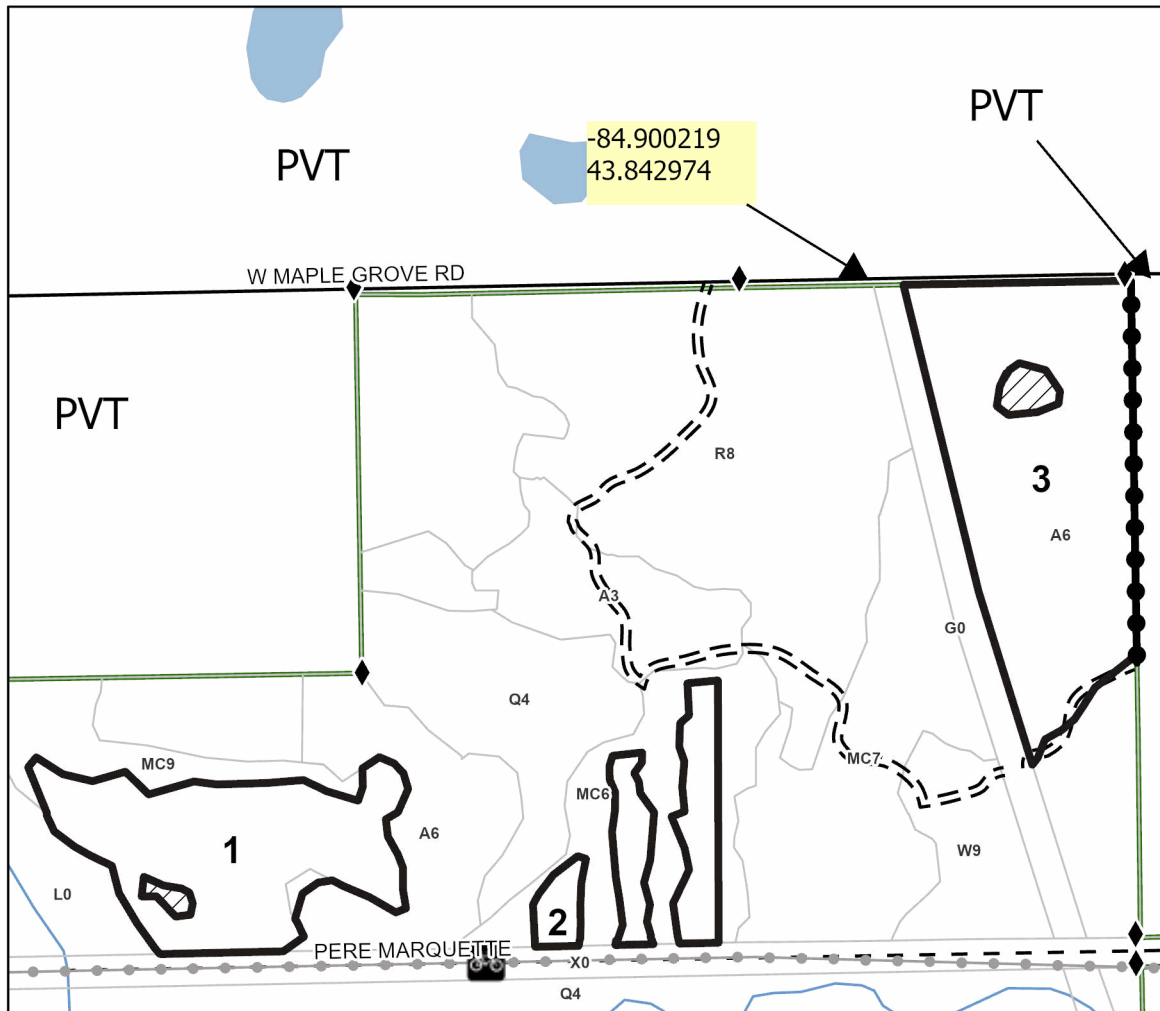
0 = Non Stocked	5 = Pole Timber Medium
1 = Seedling Sapling Poor	6 = Pole Timber Well
2 = Seedling Sapling Medium	7 = Saw Timber Poor
3 = Seedling Sapling Well	8 = Saw Timber Medium
4 = Pole Timber Poor	9 = Saw Timber Well

**Locator Map 1:200,000****Triple F****117.3 Acres**

Payment Unit Number	Acres
1	12.3
2	5.2
3	19.9
4	72.5
5	7.4

**Legend**

- Payment Unit
- Private Line (Blue)
- Forest Access Route
- Paved Road
- Private Gravel/Dirt
- Recreational Trails
- Survey Corner

Use QR Code to  
open Map in App



**TIMBER SALE MAP**

This information provided by authority of Part 525, 1994 PA 451, as amended.

Sale Number  
**73-006-24**Date  
**01/23/2025**Forest Management Unit  
Gladwin Mgt UnitCounty  
ClareMapped By: Owens  
Cruised By: OwensScale  
**1:10,000**Page  
**2**Of  
**3**

Township 17N Range 05W Section(s) and Subdivision(s) Sec. 27 S1/2NW,W1/2NE; Sec. 28 SWSW; Sec. 29 S1/2NW,N1/2SW,N1/2SE,SESE; Sec. 34 NESW;

**Cover Type**

A = Aspen	J = Jack Pine	O = Oak	U = Upland Brush
B = Paper Birch	K = Rock	P = Lowland Poplar	UM = Upland Mix Forest
C = Cedar	L = Lowland Brush	Q = Mixed Swamp Conifer	V = Bog or Marsh
D = Treed Bog	LM = Lowland Mix Forest	R = Red Pine	W = White Pine
E = Swamp Hardwoods	M = Maple, Beech, Birch	S = Black Spruce	X = Non Stocked
F = Spruce/Fir	MC = Mixed Conifer	T = Tamarack	Y = Sand
G = Grass	MD = Mixed Deciduous		Z = Water
H = Hemlock	N = Marsh		

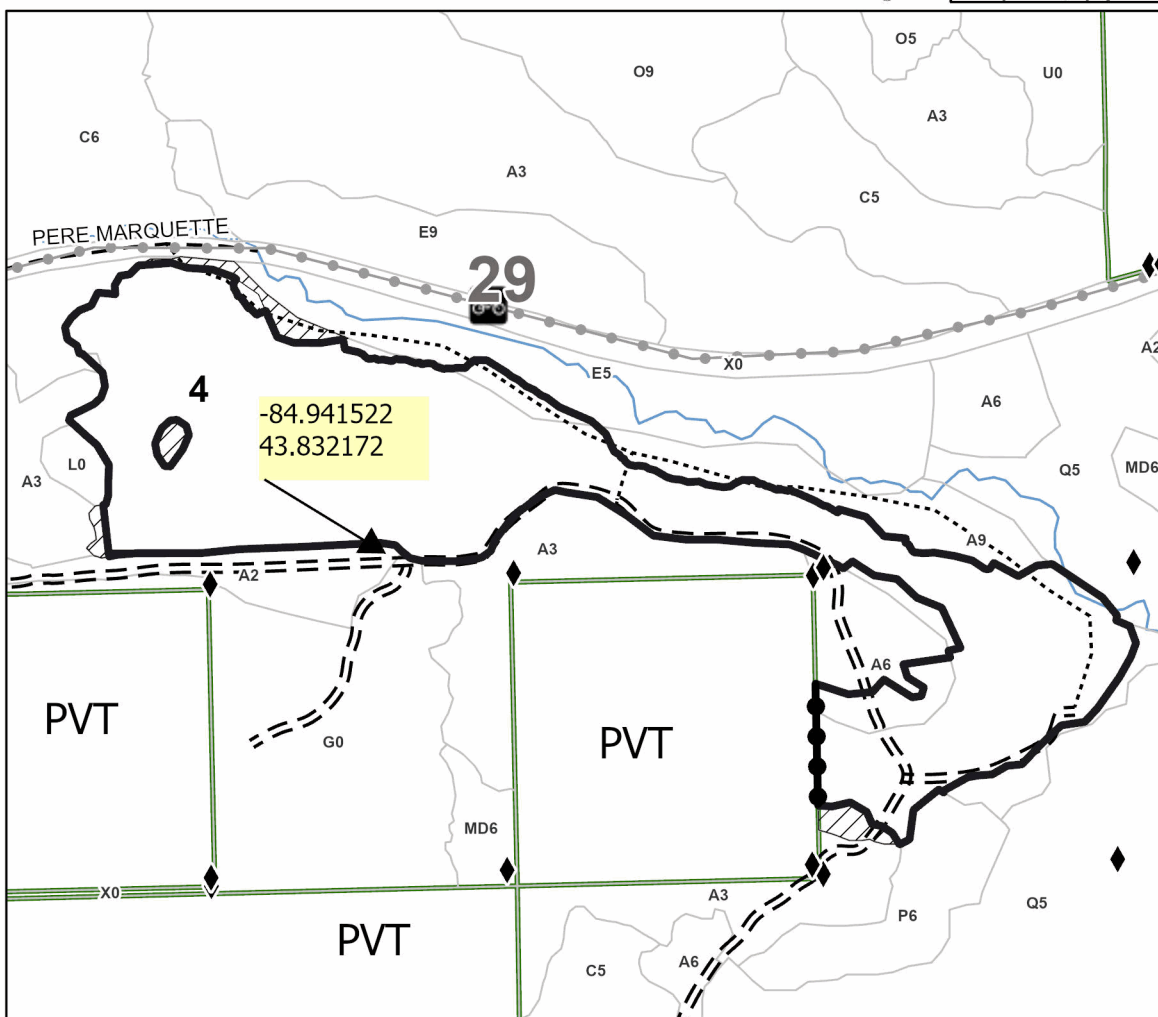
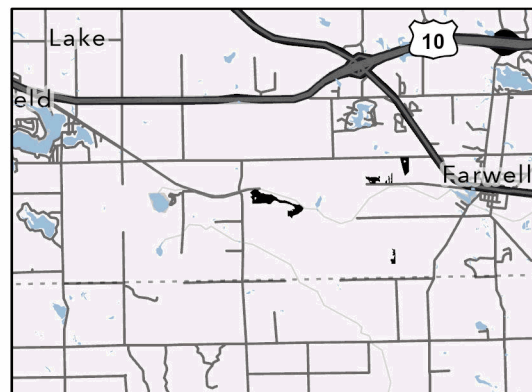
**Density**

0 = Non Stocked	5 = Pole Timber Medium
1 = Seedling Sapling Poor	6 = Pole Timber Well
2 = Seedling Sapling Medium	7 = Saw Timber Poor
3 = Seedling Sapling Well	8 = Saw Timber Medium
4 = Pole Timber Poor	9 = Saw Timber Well

Payment Unit Number	Acres
1	12.3
2	5.2
3	19.9
4	72.5
5	7.4

**Triple F****117.3 Acres**

0 0.15 0.3 0.6 Miles

**Legend**

- Payment Unit
- Against State (Red)
- Private Line (Blue)
- Forest Access Route
- Administrative Access Only
- Private Gravel/Dirt
- Recreational Trails
- Field Grade Corner
- Survey Corner

Use QR Code to open Map in App



**TIMBER SALE MAP**

This information provided by authority of Part 525, 1994 PA 451, as amended.

Sale Number  
**73-006-24**Date  
**01/23/2025**Forest Management Unit  
Gladwin Mgt UnitCounty  
ClareMapped By: Owens  
Cruised By: OwensScale  
1:7,920Page  
3Of  
3

Township 17N Range 05W Section(s) and Subdivision(s) Sec. 27 S1/2NW,W1/2NE; Sec. 28 SWSW; Sec. 29 S1/2NW,N1/2SW,N1/2SE,SESE; Sec. 34 NESW;

**Cover Type**

A = Aspen	J = Jack Pine	O = Oak	U = Upland Brush
B = Paper Birch	K = Rock	P = Lowland Poplar	UM = Upland Mix Forest
C = Cedar	L = Lowland Brush	Q = Mixed Swamp Conifer	V = Bog or Marsh
D = Treed Bog	LM = Lowland Mix Forest	R = Red Pine	W = White Pine
E = Swamp Hardwoods	M = Maple, Beech, Birch	S = Black Spruce	X = Non Stocked
F = Spruce/Fir	MC = Mixed Conifer	T = Tamarack	Y = Sand
G = Grass	MD = Mixed Deciduous		Z = Water
H = Hemlock	N = Marsh		

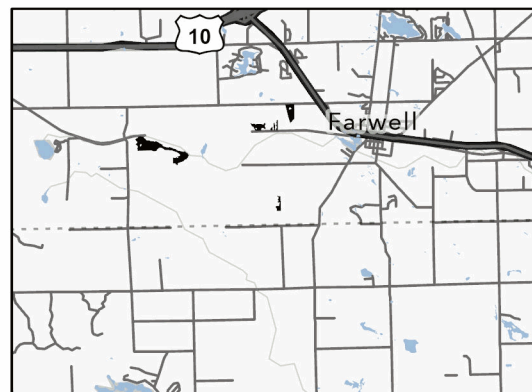
**Density**

0 = Non Stocked	5 = Pole Timber Medium
1 = Seedling Sapling Poor	6 = Pole Timber Well
2 = Seedling Sapling Medium	7 = Saw Timber Poor
3 = Seedling Sapling Well	8 = Saw Timber Medium
4 = Pole Timber Poor	9 = Saw Timber Well

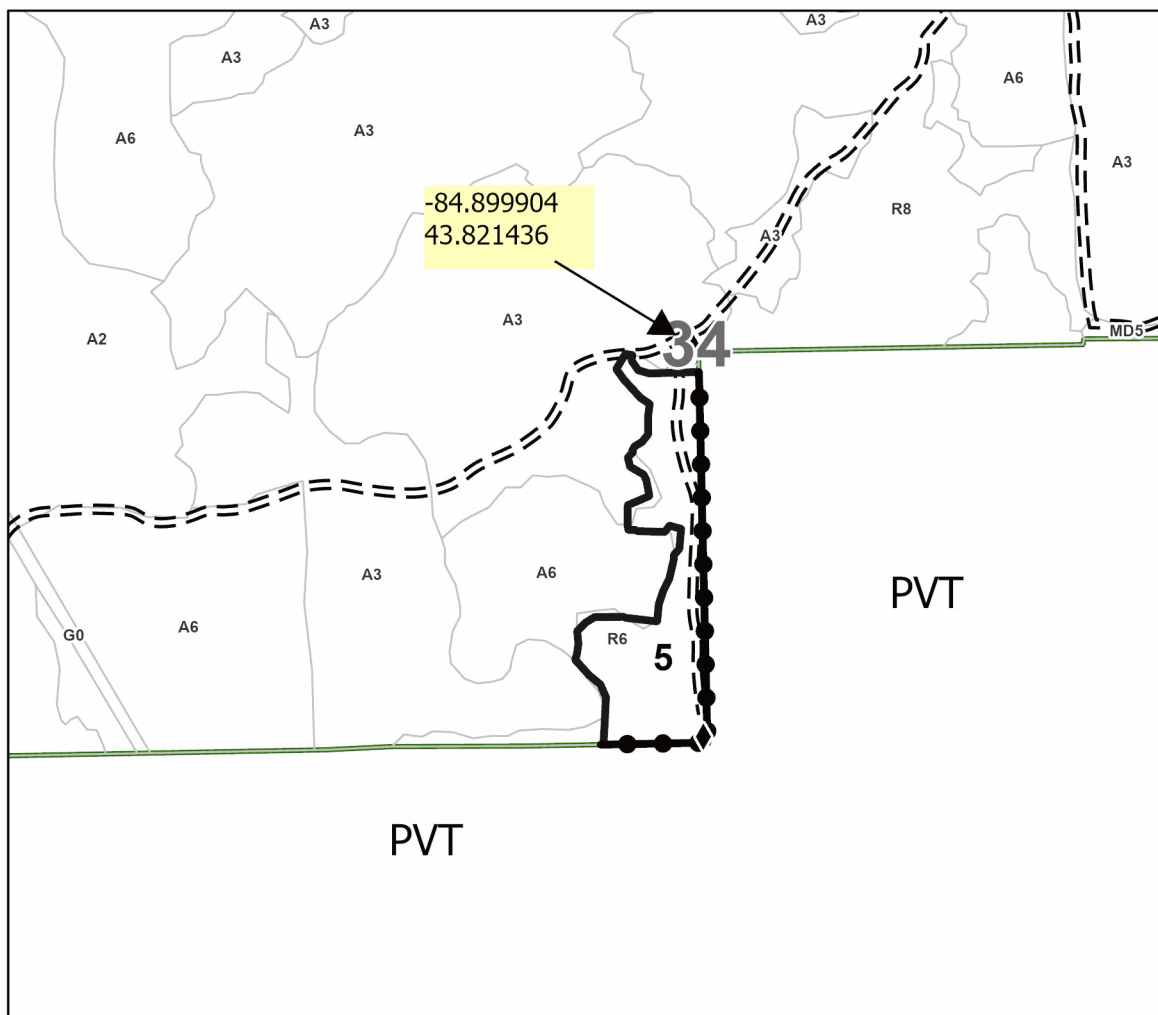
Payment Unit Number	Acres
1	12.3
2	5.2
3	19.9
4	72.5
5	7.4

**Triple F****117.3 Acres**

0 0.13 0.25 0.5 Miles

**Locator Map 1:200,000****Legend**

- Payment Unit
- Private Line (Blue)
- Forest Access Route
- Recreational Trails
- Survey Corner

Use QR Code to  
open Map in App