



**DEPARTMENT OF NATURAL RESOURCES  
STATE OF MICHIGAN  
TIMBER SALE PROSPECTUS #7805**

SCHEDULED SALE DATE AND TIME: **2:00 p.m. (local time) on June 15, 2026.**

LOCATION: **GWINN MGMT UNIT, 410 WEST M 35, GWINN, MI 49841.**

CONTACT NAME: Mike Brodeur

PHONE NUMBER: (906) 346-9201

PROSPECTUS NOTE: The bidder is advised to inspect the sale area and review the location, estimated volumes, operating costs and contract terms of proposed sales. Please be aware that some landowners may request 60 days or more notice for access across their land.

Notice is hereby given that bids will be received by the Unit Manager, GWINN MANAGEMENT UNIT, for certain timber on the following described lands:

Bear Blaster (32-002-26) / T44N, R29W, SEC. 3 , NWNW.

T44N, R29W, SEC. 5 , NESW,NWSE.

T45N, R29W, SEC. 22, S1/2SW.

T45N, R29W, SEC. 27, N1/2NW.

T45N, R29W, SEC. 32, NW,NE,N1/2SW,SESW,SE.

T45N, R29W, SEC. 33, NWNW,SW,SE.

T45N, R29W, SEC. 34, SW.

Dickinson County, Advertised Price \$162,866.95, 264.6 Acres, Aspen, Jack Pine.

**SALE NOTE:** This sale has several specs that restrict logging operations - See specs 5.2.3.4, 5.2.1.11, 5.2.3.1 and 4.2.1 for additional information. This sale also has required road work (see spec 4.1.8).

A recreation site such as a trail, pathway, or campground is within the sale area or the vicinity. Certain restrictions/specifications may be applicable including time restrictions.

## TIMBER SALE INFORMATION

### Bear Blaster (32-002-26)

T44N, R29W, SEC. 3; T44N, R29W, SEC. 5; T45N, R29W, SEC. 22; T45N, R29W, SEC. 27; T45N, R29W, SEC. 32; T45N, R29W, SEC. 33; T45N, R29W, SEC. 34.

SALE NOTE: This sale has several specs that restrict logging operations - See specs 5.2.3.4, 5.2.1. 11, 5.2.3.1 and 4.2.1 for additional information. This sale also has required road work (see spec 4.1.8).

A recreation site such as a trail, pathway, or campground is within the sale area or the vicinity. Certain restrictions/specifications may be applicable including time restrictions.

A timber sale contract for this lump sum, sealed bid timber sale will be awarded to the responsible bidder offering the highest sealed bid price. All units of volume listed below were estimated using the Inventory Manager computer program and the new Michigan taper model. Bids must be at or above the following advertised price for each product and species:

<u>PRODUCTS &amp; SPECIES</u>	<u>ESTIMATED UNITS*</u>	<u>ADVERTISED PRICE</u>
Sawtimber		
Paper Birch	3.1 MBF	\$ 74.00 / MBF
Red Oak	29.3 MBF	\$ 140.00 / MBF
Pulpwood		
Balsam Fir	25 Cords	\$ 12.30 / Cord
Balsam Poplar	27 Cords	\$ 20.85 / Cord
Jack Pine	1,925 Cords	\$ 43.80 / Cord
Misc. Species 2	22 Cords	\$ 7.50 / Cord
Mixed Aspen	2,025 Cords	\$ 20.85 / Cord
Mixed Hardwood	243 Cords	\$ 14.45 / Cord
Mixed Spruce	565 Cords	\$ 13.75 / Cord
Paper Birch	96 Cords	\$ 14.75 / Cord
Red Oak	124 Cords	\$ 18.05 / Cord
Red Pine	335 Cords	\$ 44.35 / Cord
Tamarack	52 Cords	\$ 14.60 / Cord
White Pine	34 Cords	\$ 12.15 / Cord

\* The total volume is statistically estimated within plus (+) or minus (-) 10.30 percent. There are an estimated 5,549 cords on this timber sale, plus or minus 572 cords at the 95% confidence level. The estimated units are final and not subject to adjustment. Prospective bidders are urged to examine this timber and to make their own estimates of quantity and quality.

### **BOND AND PAYMENT SCHEDULE:**

1. A bond in the amount of \$16,286.70 to insure faithful performance of the conditions of the contract will be deposited by the successful bidder within 21 days of the sale award.
2. Cutting in any sale or unit without the required advance payment would be considered a trespass.
3. Total payment must be paid in advance or according to the following schedule :
  - (a) Ten percent (10%) of the sale value must be paid within 21 days of the sale award.
  - (b) The 10% down payment will be credited towards the first unit cut.
  - (c) Payment for each of the following units must be made before cutting begins in that unit:

PAYMENT UNIT NUMBER	PERCENT OF TOTAL SALE VALUE
01	12.6%
02	13.0%
03	13.5%
04	14.6%
05	12.2%
06	6.7%
07	4.1%
08	1.5%
09	2.2%
10	1.0%
11	0.2%
12	3.1%
13	6.1%
14	1.0%
15	4.3%
16	3.9%

4. If no cutting takes place, the 10% down payment will not be refunded.
5. Operations on the contract issued will terminate on 06/30/2030.

**SALE STATISTICS**

Volumes were calculated in cubic feet using the Michigan taper model. Cubic foot volume includes all wood inside bark for the product indicated. For display purposes, cubic feet were converted to cords and MBF using a simple conversion factor, e.g. 79 cubic feet per cord and 185 cubic feet per MBF. The cubic foot volumes are precise; the cords and MBF volumes are not. Cubic foot volume cannot be directly converted to cords or boards with precision.

**SALE VOLUMES**

The total estimated sale volume may not equal the sum of the species/products due to the nature of statistical calculations associated with double sampling methodology.

VOLUME			STATISTICAL RANGE IN CORDS	
TOTAL CUBIC FEET	TOTAL CORDS	PERCENT ERROR	MINIMUM	MAXIMUM
438,339	5,549	10.30%	4,977	6,120

**VDU VOLUMES**

A VDU is a Volume Determination Unit. Volumes and their associated statistics are calculated at the VDU level and summarized to the sale level. There is often a one to one relationship between a VDU and a Payment Unit, but not always, depending on the cruise design. Refer to the VDU TO PAYMENT UNIT table.

VDU	VOLUME		PERCENT ERROR	RANGE IN CORDS	
	TOTAL CUBIC FEET	TOTAL CORDS		MINIMUM	MAXIMUM
1	130,842	1,656	21.16%	1,306	2,007
2	40,137	508	33.19%	339	677
3	3,988	50	132.73%	0	117
4	3,567	45	68.19%	14	76
9	12,511	158	78.68%	34	283
31	13,381	169	66.60%	57	282
36	30,021	380	50.33%	189	571
51	8,992	114	71.77%	32	196
58	25,254	320	40.52%	190	449
59	16,560	210	39.84%	126	293
67	72,361	916	25.79%	680	1,152
72	25,603	324	41.18%	191	458
99	1,845	23	70.67%	7	40
104	27,147	344	33.09%	230	457
108	19,055	241	37.46%	151	332
164	7,074	90	82.76%	15	164
<b>TOTAL:</b>	<b>438,339</b>	<b>5,549</b>		<b>3,561</b>	<b>7,553</b>

**VDU TO PAYMENT UNIT**

When a VDU is associated with more than one Payment Unit (PU), the VDU volumes are assigned to the PU based on acres of the VDU within the PU.

VDU	VDU ACRES	PU	PU ACRES
<b>TOTAL:</b>			

**DESCRIPTION OF TIMBER BY PU (PU)**

PU	MARKET GROUP	PRODUCT	QUANTITY	UNIT	ACRES	ADVERTISE PRICE
1	Jack Pine	Pulpwood	439	Cords	14.2	\$20,596.45
	Mixed Aspen		58	Cords		
	<i>Quaking Aspen</i>		58	<i>Cords</i>		
	Mixed Hardwood		11	Cords		
	<i>Red Maple</i>		11	<i>Cords</i>		
2	Jack Pine	Pulpwood	370	Cords	14.3	\$21,118.20
	Mixed Aspen		85	Cords		
	<i>Quaking Aspen</i>		85	<i>Cords</i>		
	Mixed Hardwood		3	Cords		
	<i>Red Maple</i>		3	<i>Cords</i>		
	Red Pine		69	Cords		
	White Pine		3	Cords		
3	Jack Pine	Pulpwood	378	Cords	21.9	\$21,912.20
	Mixed Aspen		90	Cords		
	<i>Quaking Aspen</i>		90	<i>Cords</i>		
	Mixed Hardwood		5	Cords		
	<i>Black Cherry</i>		1	<i>Cords</i>		
	<i>Red Maple</i>		4	<i>Cords</i>		
	Red Pine		76	Cords		
White Pine	3	Cords				
4	Jack Pine	Pulpwood	411	Cords	22.4	\$23,746.15
	Mixed Aspen		98	Cords		
	<i>Quaking Aspen</i>		98	<i>Cords</i>		
	Mixed Hardwood		5	Cords		
	<i>Black Cherry</i>		1	<i>Cords</i>		
	<i>Red Maple</i>		4	<i>Cords</i>		
	Red Pine		81	Cords		
White Pine	3	Cords				
5	Jack Pine	Pulpwood	2	Cords	49.4	\$19,885.30
	Mixed Aspen		918	Cords		
	<i>B. T. Aspen</i>		34	<i>Cords</i>		
	<i>Quaking Aspen</i>		884	<i>Cords</i>		
	Mixed Hardwood		27	Cords		
	<i>Black Cherry</i>		2	<i>Cords</i>		
	<i>Red Maple</i>		25	<i>Cords</i>		
	Mixed Spruce		13	Cords		
	<i>Black Spruce</i>		13	<i>Cords</i>		
Paper Birch	6	Cords				
6	Jack Pine	Pulpwood	16	Cords	32.4	\$10,934.60
	Mixed Aspen		280	Cords		
	<i>B. T. Aspen</i>		52	<i>Cords</i>		
	<i>Quaking Aspen</i>		228	<i>Cords</i>		
	Mixed Hardwood		21	Cords		
	<i>Black Cherry</i>		4	<i>Cords</i>		
	<i>Red Maple</i>		17	<i>Cords</i>		
	Red Pine		92	Cords		
White Pine	1	Cords				
7	Jack Pine	Pulpwood	46	Cords	17.7	\$6,701.60
	Mixed Aspen		194	Cords		
	<i>Quaking Aspen</i>		194	<i>Cords</i>		
	Mixed Hardwood		2	Cords		
	<i>Black Cherry</i>		2	<i>Cords</i>		
	Red Pine		13	Cords		
White Pine	3	Cords				
8	Balsam Fir	Pulpwood	3	Cords	7.1	\$2,371.75

**DESCRIPTION OF TIMBER BY PU (PU), CON'T**

PU	MARKET GROUP	PRODUCT	QUANTITY	UNIT	ACRES	ADVERTISE PRICE	
8 con't	Mixed Aspen	Pulpwood	64	Cords			
	<i>B. T. Aspen</i>		27	<i>Cords</i>			
	<i>Quaking Aspen</i>		37	<i>Cords</i>			
	Mixed Hardwood		51	Cords			
	<i>Red Maple</i>		51	<i>Cords</i>			
	Mixed Spruce		2	Cords			
	<i>Black Spruce</i>		2	<i>Cords</i>			
	Paper Birch		16	Cords			
9	Balsam Fir	Pulpwood	3	Cords	19.7	\$3,656.35	
	Balsam Poplar		22	Cords			
	Mixed Aspen		17	Cords			
	<i>B. T. Aspen</i>		6	<i>Cords</i>			
	<i>Quaking Aspen</i>		11	<i>Cords</i>			
	Mixed Hardwood		42	Cords			
	<i>Red Maple</i>		42	<i>Cords</i>			
	Mixed Spruce		115	Cords			
	<i>Black Spruce</i>		115	<i>Cords</i>			
	Paper Birch		33	Cords			
	Tamarack		9	Cords			
10	Paper Birch	Sawtimber	1.3	MBF	7.0	\$1,684.55	
	Mixed Hardwood	Pulpwood	14	Cords			
	<i>Red Maple</i>		14	<i>Cords</i>			
	Mixed Spruce		53	Cords			
	<i>Black Spruce</i>		53	<i>Cords</i>			
	Paper Birch		2	Cords			
			Tamarack				43
11	Mixed Spruce		Pulpwood	15	Cords	5.9	\$324.25
	<i>Black Spruce</i>	15		<i>Cords</i>			
	Paper Birch	8		Cords			
12	Balsam Poplar	Pulpwood	5	Cords	11.7	\$5,101.05	
	Jack Pine		11	Cords			
	Mixed Spruce		323	Cords			
	<i>Black Spruce</i>		323	<i>Cords</i>			
	Paper Birch		5	Cords			
13	Paper Birch	Sawtimber	1.8	MBF	13.9	\$9,985.25	
	Balsam Fir	Pulpwood	11	Cords			
	Jack Pine		121	Cords			
	Mixed Aspen		145	Cords			
	<i>B. T. Aspen</i>		44	<i>Cords</i>			
	<i>Quaking Aspen</i>		101	<i>Cords</i>			
	Mixed Hardwood		36	Cords			
	<i>Red Maple</i>		36	<i>Cords</i>			
	Mixed Spruce		41	Cords			
	<i>Black Spruce</i>		36	<i>Cords</i>			
	<i>White Spruce</i>		5	<i>Cords</i>			
			Paper Birch				21
14	Balsam Fir		Pulpwood	8	Cords	7.7	\$1,589.90
	Mixed Aspen	48		Cords			
	<i>Quaking Aspen</i>	48		<i>Cords</i>			
	Mixed Hardwood	26		Cords			
	<i>Red Maple</i>	26		<i>Cords</i>			
	Mixed Spruce	3		Cords			
	<i>White Spruce</i>	3		<i>Cords</i>			
	Paper Birch		5	Cords			
15	Red Oak	Sawtimber	29.3	MBF	13.3	\$6,937.75	

**DESCRIPTION OF TIMBER BY PU (PU), CON'T**

PU	MARKET GROUP	PRODUCT	QUANTITY	UNIT	ACRES	ADVERTISE PRICE
15 con't	Misc. Species 2	Pulpwood	22	Cords		
	Red Oak		124	Cords		
	Red Pine		4	Cords		
	White Pine		21	Cords		
16	Jack Pine	Pulpwood	131	Cords	6.0	\$6,321.60
	Mixed Aspen		28	Cords		
	<i>Quaking Aspen</i>		28	<i>Cords</i>		
TOTAL:			32.4	MBF		
TOTAL:			5,473	Cords		

## Sale Specific Conditions & Requirements

Sale Name: Bear Blaster

Sale Number: 32-002-26 Seq#: 1

### 1 - Sale Area

#### 1.2 - Boundaries

##### 1.2.1 - Painted Boundaries (9/19)

The sale boundary and Payment Unit boundaries are marked and identified by blue, red and yellow paint. Exterior sale boundary lines against private property are marked with blue paint. Exterior sale boundary lines against state are marked with red paint. Interior Payment Unit boundaries are marked with yellow paint. Retention patches are marked with red paint; no harvesting activities may occur within these areas. The painted boundary line trees are not Included Timber and are to be protected unless marked with orange paint. Yellow painted trees designating an interior Payment Unit boundary are only to be cut when all surrounding Payment Units have been paid.

### 2 - Timber Specifications

#### 2.1 - Included Timber

##### 2.1.1 - Clearcut Unit(s) with Unmerchantable Trees (6/14)

Within Payment Unit(s) 1-16, cut all trees that are two (2) inches or more at DBH, with the following exceptions:

- Within Payment Units 1, 5 and 8-14, do not cut red pine, white pine, hemlock, cedar, and oak.
- Within Payment Unit 16, do not cut white pine.

Note: Within Payment Units 1, 3-8, 13 and 16, all Included Timber marked with orange paint rings must be cut off at 6 feet. The top wood will be utilized and the bottom 6 feet will be left standing.

##### 2.1.11 - Description of Timber Note (2/04)

Note that Misc. Species 2 is dead oak, which is designated for cutting.

In addition, Payment Unit 11 is an optional Payment Unit - If the Purchaser does not wish to harvest this unit, it can be removed from the contract with an amendment. See spec 8.3.2 for additional information.

#### 2.2 - Utilization

##### 2.2.3 - Stump Heights (12/24)

Stump heights within Payment Unit(s) 2-4, 6, 7, 15, and 16 shall not exceed 12 inches for trees greater than 10 inches at DBH and four (4) inches for trees smaller than 10 inches at DBH. This is in order to facilitate planting operations.

### 4 - Transportation

#### 4.1 - Construction

##### 4.1.4 - Timber Removed for Construction (3/23)

Trees cut or damaged in the process of pre-approved road, landing, or skid trail construction will be decked in an area separate from other Designated Timber and not removed until measured by the Sale Administrator. Payment will be made at contract prices or average prices, if not on the contract.

##### 4.1.6 - Road Construction (4/24)

Construction of new roads or improvements of existing roads shall be done in such a way as to minimize the environmental and visual impacts. Merchantable trees shall be cut and utilized unless otherwise directed. Non-merchantable trees shall be severed and laid flat on the ground. Slash shall be scattered, and not left in windrows and kept a minimum of 10 feet back from the road edge. Stumps shall be set upright, not left on edge, and be moved at least 10 feet away from the road edge. Disturbed soil shall be feathered into the woods and not left in berms or windrows.

##### 4.1.8 - Road Work (1) (8/07)

The following road work is required: The Purchaser is responsible for hauling and spreading 60 yards of pit run gravel on Chain of Lakes Road. Contact the Sale Administrator for placement details.

## 4.2 - Maintenance

### 4.2.1 - Hauling Restriction (12/08)

Hauling may be restricted on forest roads by the Unit Manager or his/her representative during spring breakup. During snowmobile season, December 1st through March 31st, hauling on Snowmobile Trail #5 will be restricted to Monday through Thursday during daylight hours. The restriction is for safety and resource protection.

### 4.2.2 - Fill Material (4/07)

To maintain roads, fill material may be needed in areas where "holes" exist or may be expected to develop. This fill material should be placed before trucking begins. Contact the sale administrator regarding the availability of onsite sand or gravel from adjacent State-owned lands.

### 4.2.3 - Road maintenance (8/13)

The following road maintenance is required: After all hauling is completed, Floodwood Rd (Dickinson County portion, appx 2.5 miles) must be graded with a road grader. This includes cleaning of drainage areas, grading, crowning and filling with gravel, if necessary. Damages will be assessed if grading/repair does not occur.

### 4.2.5 - Two Wheel Drive Condition (2/04)

All existing trail roads on and adjacent to the Sale Area must be passable by two-wheel drive traffic for the duration of the sale.

## 5 - Operations

### 5.1 - Notification

#### 5.1.1 - Pre-sale Conference (10/25)

A pre-sale conference on site between the Purchaser and Sale Administrator is required prior to beginning any operations. The Unit Manager or his/her representative must be contacted at least 5 days in advance to schedule the conference.

### 5.2 - Conduct of Operations

#### 5.2.1 - Slash

##### 5.2.1.11 - Slash for Reforestation (3/21)

To facilitate reforestation, the Sale Area shall be left with slash evenly distributed. Bunched tops within the cutting area shall be broken up and scattered. Stumps shall be cut low to the ground. Processing sites shall not be left with a compacted layer of slash; tops from these sites shall be hauled back into the cut area and scattered.

#### 5.2.3 - Operating Restrictions

##### 5.2.3.1 - Operating Restrictions (9/11)

Within Payment Unit(s) 9-12, unless changed by written agreement, cutting and skidding are limited to frozen ground conditions (generally the period of December 1 to April 1). This restriction is due to wet soils.

##### 5.2.3.4 - Oak Wilt Restriction, No Exceptions (1/18)

Within Payment Unit(s) 8 and 15, cutting, skidding, and hauling within the sale and brushing of access roads to the sale are not permitted during the period of April 15 to July 15. No exceptions will be granted. This is necessary to reduce the spread of oak wilt.

#### 5.2.4 - Dead and Down Creation

##### 5.2.4.2 - Dead and Down Creation, Hare and Grouse (1/25)

To improve habitat for snowshoe hare, grouse, and other species, the Purchaser is to leave one, 9-15" diameter piece, on the ground for every four (4) acres within Payment Units 13 and 14. If possible, the logs or trees should be felled so they are next to the stump. Note these pieces should have a minimum length of eight (8) feet. They can be of any tree species other than cedar, red pine, or white pine and can be an un-merchantable piece of wood or a full tree.

##### 5.2.4.3 - Dead and Down Creation, Dead Trees (6/07)

Except as provided for in General Condition and Requirement 5.2.2, no dead trees, standing or down, are to be cut, skidded, or processed. Exception: Within Payment Unit 15, all standing dead trees 8 feet or taller are designated for cutting. This is in order to facilitate post-harvest site prep operations.

#### 5.2.32 - Decking/Landing Restoration (9/13)

All decking and landing areas must have the surface area restored to a condition equal to or better than before. This is to ensure the proper regeneration of the stand. Wood debris, chips and "cookies" from trimmings must be removed or scattered away from landing and loading areas and may not be windrowed on the edge.

#### 5.2.37 - No Decking Areas (12/08)

No decking is allowed within 20 feet of Floodwood Rd.

#### 5.2.38 - No Decking Against Live Trees (2/04)

Cut products may not be decked against unmarked or designated leave trees.

#### 5.2.39 - ORV Trail/Route Protection (4/18)

The Porterfield Motorcycle trail is shown on the Timber Sale Map. Maintain a 10-foot-wide slash, debris, and rut free zone daily using the motorcycle trail as the centerline. Do not run equipment down the motorcycle trail. Crossing the motorcycle trail should be limited to avoid damage. Sale Administrator may limit or designate crossing site on the motorcycle trail. See spec 2.1.1 for details on trees marked with orange paint rings.

#### 5.2.41 - Snowmobile Trail Protection (9/11)

Snowmobile Trail #5 is shown on the Timber Sale Map. Do not cut or damage posts with orange trail markers or traffic control signs. If the trail is used, it must be maintained and restored to a condition equal to or better than before the sale. If the trail is used for hauling, it must be graded to the satisfaction of the Unit Manager or his/her representative prior to December 1. If the trail road is to be used for hauling during the snowmobile season, then a snow-covered base must be left on the trail (see spec 4.2.1 for additional information). Maintain a 20-foot-wide slash, debris, and rut free zone daily using the snowmobile trail as the centerline. All stumps within 10 feet of the snowmobile trail must be cut at ground level.

### 5.4 - Soil Protection

#### 5.4.1 - Rutting Restriction, General (7/16)

Operations are to cease immediately if equipment and weather conditions result in rutting of roads and/or skid trails which is 12 inches or greater in depth and 50 feet in length. The Unit Manager or his/her representative may restrict hauling and/or skidding if ruts exceed the specified depth. With the Unit Manager or his/her representative's approval, the Purchaser may return to the area when the risk of rutting has decreased.

#### 5.4.2 - Skid Trails (2/04)

Skid trails up and down slopes should be avoided. If, however, this is unavoidable, these trails will be left in a non-erodible condition using water bars, logs, and slash. Placing of slash on these skid trails while logging is ongoing may alleviate need for any further action. At the direction of the Sale Administrator, seed, fertilizer, and mulch may also be required.

## 6 - Safety and Fire Prevention

### 6.2 - Signing

#### 6.2.1 - Road Posting (10/20)

The Purchaser is responsible for posting and maintaining caution signs on Chain of Lakes Rd and Floodwood Rd prior to beginning operations. The road must be posted at appropriate distances from the sale area to warn of logging activity and truck traffic. Signs must be removed when harvest operations are suspended or completed. The Purchaser will provide these signs.

#### 6.2.2 - Snowmobile Trail Posting (10/20)

The Purchaser is responsible for posting and maintaining caution signs on snowmobile trail #5 prior to beginning operations during the snowmobile season (approximately December 1 to March 31). The trail must be posted at appropriate distances from the sale area to warn of logging activity and truck traffic. Signs must be removed when harvest operations are suspended or completed. The Purchaser will provide these signs.

#### 6.2.3 - Recreational Trail Posting (10/20)

The Purchaser is responsible for posting and maintaining caution signs on the Porterfield Motorcycle Trail prior to beginning operations. The trail must be posted at appropriate distances from the sale area to warn of logging activity and truck traffic at both ends of the trail. Signs must be removed when harvest operations are suspended or completed. The Purchaser will provide these signs.

## **7 - Other Conditions**

### 7.3 - Contract Modifications

#### 7.3.3 - Modification for Reforestation (8/05)

When contractual work of Purchaser has been accepted for any Payment Unit identified on Sale Area Map, Payment Unit will be eliminated from the Sale Area on written notice so that reforestation operations can begin.

## **8 - Performance and Settlement**

### 8.3 - Uncompleted or Terminated Contracts

#### 8.3.2 - Completion of Contract, Other (11/16)

Areas of this sale may be difficult to log. Per General Condition & Requirement 3.5 - Adjustment of Quantity, there will be no adjustment to contract volume, but unharvested timber may not be considered a violation of General Condition & Requirement 8.3 - Uncompleted or Terminated Contract. This applies to Payment Unit 11.



### TIMBER SALE MAP

This information provided by authority of Part 525, 1994 PA 451, as amended.

Sale Number	Date	
<b>32-002-26</b>	01/14/2026	
Scale	Page	Of
1:15,840	1	4

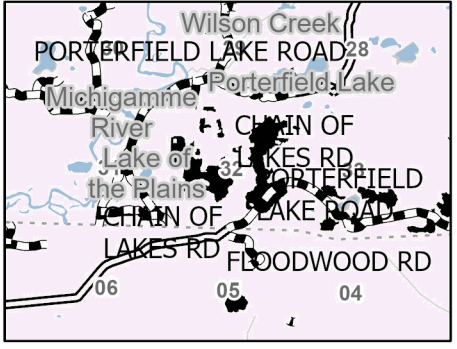
Forest Management Unit	County	Mapped By: Siler
Gwynn Mgt Unit	Marquette	Cruised By: Siler & Gould

Township	Range	Section(s) and Subdivision(s)
44N / 45N	29W	NWNW,SW,SE; Sec. 34 SW; Sec. 5 NESW,NWSE; Sec. 22 S1/2SW; Sec. 27 N1/2NW; Sec. 3 NWNW; Sec. 32 NW,NE,N1/2SW,SESW,SE; Sec. 33

Cover Type			
A = Aspen	J = Jack Pine	O = Oak	U = Upland Brush
B = Paper Birch	K = Rock	P = Lowland Poplar	UM = Upland Mix Forest
C = Cedar	L = Lowland Brush	Q = Mixed Swamp Conifer	V = Bog or Marsh
D = Treed Bog	LM = Lowland Mix Forest	R = Red Pine	W = White Pine
E = Swamp Hardwoods	M = Maple, Beech, Birch	S = Black Spruce	X = Non Stocked
F = Spruce/Fir	MC = Mixed Conifer	T = Tamarack	Y = Sand
G = Grass	MD = Mixed Deciduous		Z = Water
H = Hemlock	N = Marsh		

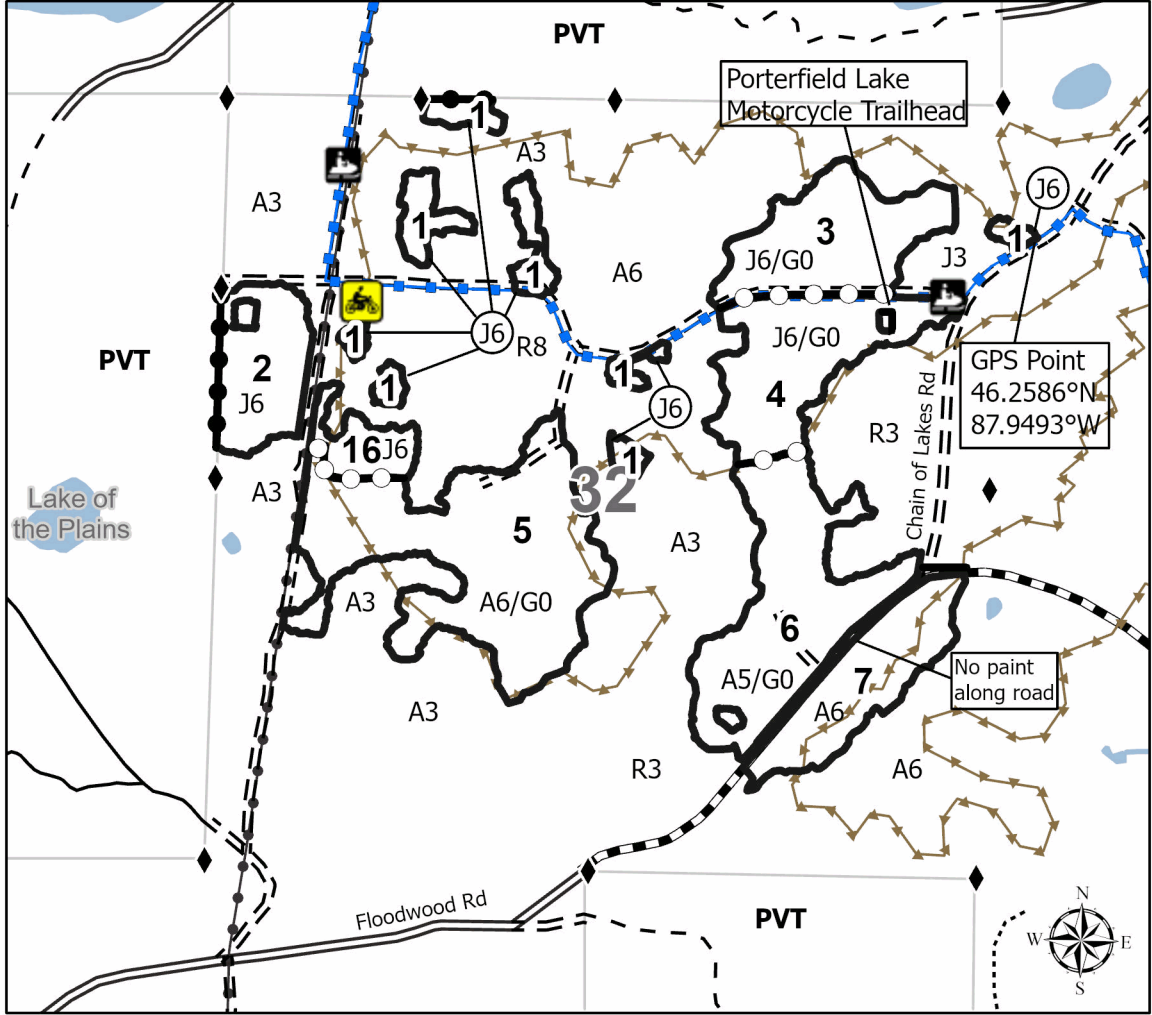
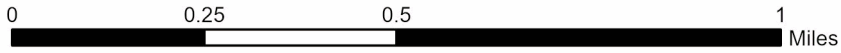
Density	
0 = Non Stocked	5 = Pole Timber Medium
1 = Seedling Sapling Poor	6 = Pole Timber Well
2 = Seedling Sapling Medium	7 = Saw Timber Poor
3 = Seedling Sapling Well	8 = Saw Timber Medium
4 = Pole Timber Poor	9 = Saw Timber Well

### Locator Map 1:100,000



Payment Unit	Acres	Payment Unit	Acres	Payment Unit	Acres
1	14.2	7	17.7	13	13.9
2	14.3	8	7.1	14	7.7
3	21.9	9	19.7	15	13.3
4	22.4	10	7	16	6
5	49.4	11	5.9		
6	32.4	12	11.7		

**Bear Blaster**  
**264.6 Acres**  
**Compartment:**  
**32245**  
**32243**  
**12008**



Legend	
	Against State (Red)
	Private Line (Blue)
	Payment Unit (Yellow)
	State Boundary
	Primary Forest Road
	Forest Access Route
	Administrative Access Only
	Paved Road
	Government Gravel/Dirt
	Private Gravel/Dirt
	Survey Grade Corner
	Lakes and Rivers
	Nearby Timber Sale
	Snowmobile Trail
	Powerline
	Motorcycle Trail





### TIMBER SALE MAP

This information provided by authority of Part 525, 1994 PA 451, as amended.

Sale Number	Date	
<b>32-002-26</b>	01/14/2026	
Scale	Page	Of
1:15,840	2	4

Forest Management Unit	County	Mapped By: Siler
Gwynn Mgt Unit	Marquette	Cruised By: Siler & Gould

Township	Range	Section(s) and Subdivision(s)
44N / 45N	29W	NWNW,SW,SE; Sec. 34 SW; Sec. 5 NESW,NWSE; Sec. 22 S1/2SW; Sec. 27 N1/2NW; Sec. 3 NWNW; Sec. 32 NW,NE,N1/2SW,SESW,SE; Sec. 33

Cover Type			
A = Aspen	J = Jack Pine	O = Oak	U = Upland Brush
B = Paper Birch	K = Rock	P = Lowland Poplar	UM = Upland Mix Forest
C = Cedar	L = Lowland Brush	Q = Mixed Swamp Conifer	V = Bog or Marsh
D = Treed Bog	LM = Lowland Mix Forest	R = Red Pine	W = White Pine
E = Swamp Hardwoods	M = Maple, Beech, Birch	S = Black Spruce	X = Non Stocked
F = Spruce/Fir	MC = Mixed Conifer	T = Tamarack	Y = Sand
G = Grass	MD = Mixed Deciduous	Z = Water	
H = Hemlock	N = Marsh		

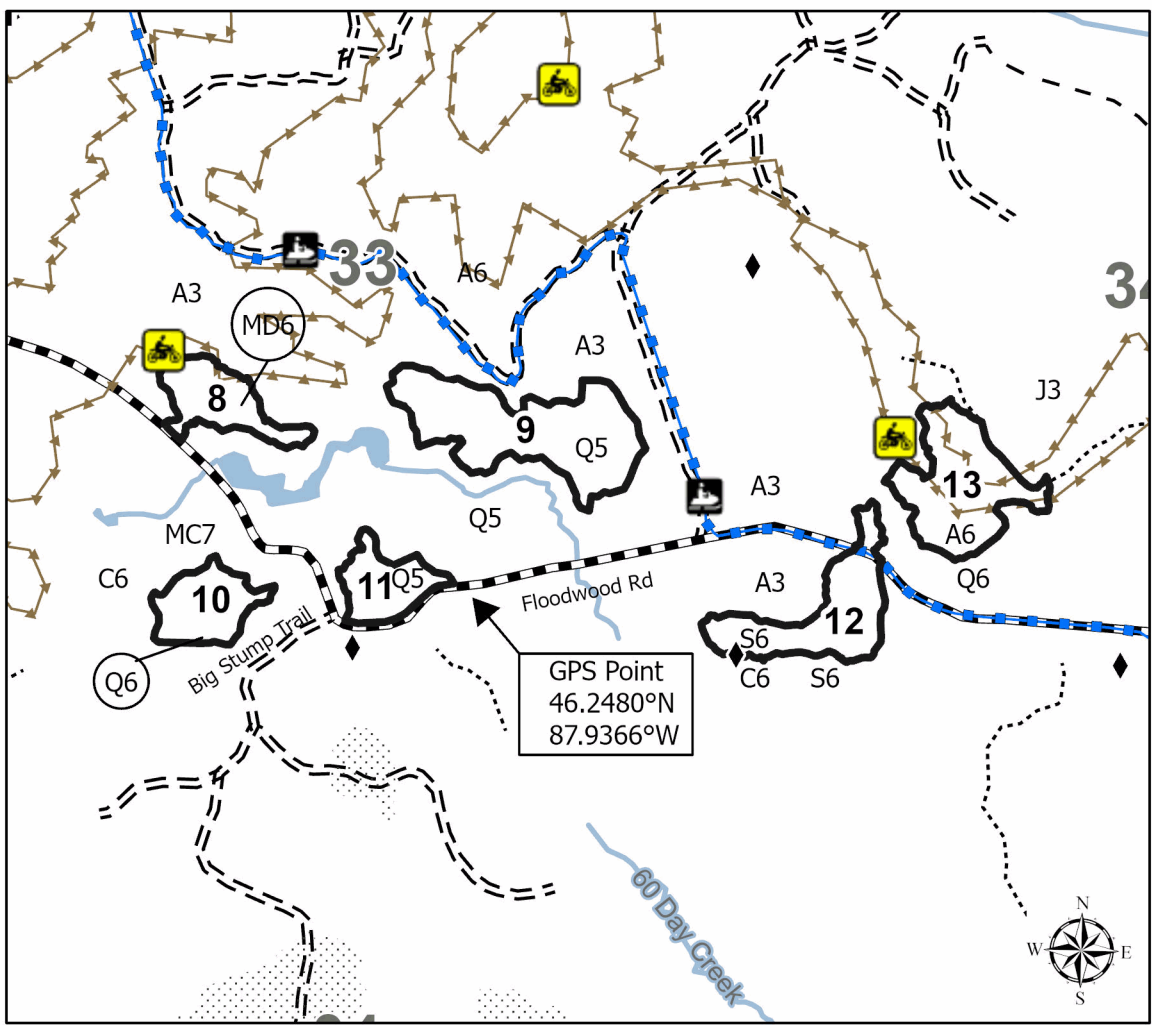
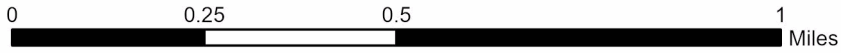
Density	
0 = Non Stocked	5 = Pole Timber Medium
1 = Seedling Sapling Poor	6 = Pole Timber Well
2 = Seedling Sapling Medium	7 = Saw Timber Poor
3 = Seedling Sapling Well	8 = Saw Timber Medium
4 = Pole Timber Poor	9 = Saw Timber Well

### Locator Map 1:100,000



Payment Unit	Acres	Payment Unit	Acres	Payment Unit	Acres
1	14.2	7	17.7	13	13.9
2	14.3	8	7.1	14	7.7
3	21.9	9	19.7	15	13.3
4	22.4	10	7	16	6
5	49.4	11	5.9		
6	32.4	12	11.7		

**Bear Blaster**  
**264.6 Acres**  
**Compartment:**  
**32245**  
**32243**  
**12008**



**Legend**

- Against State (Red)
- Forest Access Route
- Administrative Access Only
- Government Gravel/Dirt
- Private Gravel/Dirt
- Survey Grade Corner
- Lakes and Rivers
- Streams
- Nearby Timber Sale
- Snowmobile Trail
- Motorcycle Trail





### TIMBER SALE MAP

This information provided by authority of Part 525, 1994 PA 451, as amended.

Sale Number  
**32-002-26**

Date  
**01/14/2026**

Forest Management Unit  
Gwynn Mgt Unit

County  
Dickinson

Mapped By: Siler  
Cruised By: Siler & Gould

Scale  
1:10,000

Page  
3

Of  
4

Township  
44N / 45N

Range  
29W

Section(s) and Subdivision(s)  
NWNW,SW,SE; Sec. 34 SW; Sec. 5 NESW,NWSE;  
Sec. 22 S1/2SW; Sec. 27 N1/2NW; Sec. 3 NWNW; Sec. 32 NW,NE,N1/2SW,SESW,SE; Sec. 33

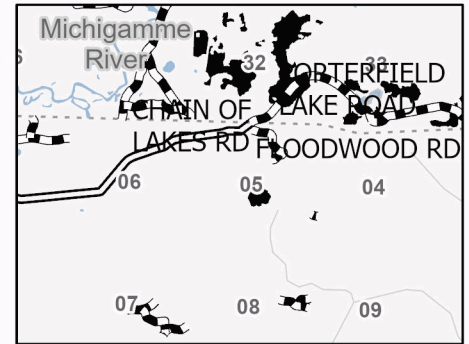
#### Cover Type

A = Aspen	J = Jack Pine	O = Oak	U = Upland Brush
B = Paper Birch	K = Rock	P = Lowland Poplar	UM = Upland Mix Forest
C = Cedar	L = Lowland Brush	Q = Mixed Swamp Conifer	V = Bog or Marsh
D = Treed Bog	LM = Lowland Mix Forest	R = Red Pine	W = White Pine
E = Swamp Hardwoods	M = Maple, Beech, Birch	S = Black Spruce	X = Non Stocked
F = Spruce/Fir	MC = Mixed Conifer	T = Tamarack	Y = Sand
G = Grass	MD = Mixed Deciduous	Z = Water	
H = Hemlock	N = Marsh		

#### Density

0 = Non Stocked	5 = Pole Timber Medium
1 = Seedling Sapling Poor	6 = Pole Timber Well
2 = Seedling Sapling Medium	7 = Saw Timber Poor
3 = Seedling Sapling Well	8 = Saw Timber Medium
4 = Pole Timber Poor	9 = Saw Timber Well

#### Locator Map 1:100,000



## Bear Blaster

**264.6 Acres**

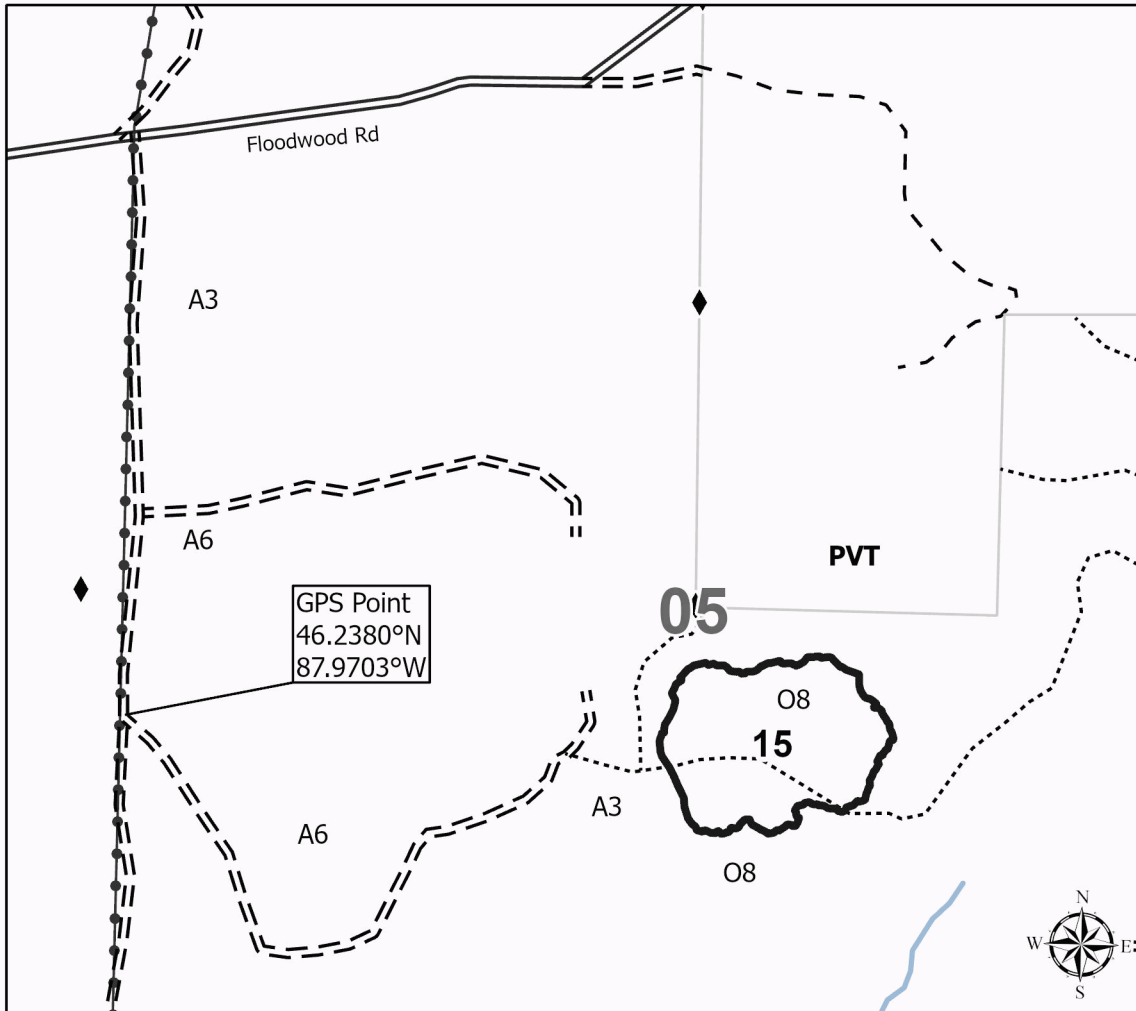
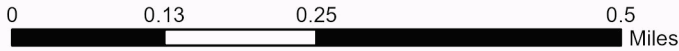
**Compartment:**

**32245**

**32243**

**12008**

Payment Unit	Acres	Payment Unit	Acres	Payment Unit	Acres
1	14.2	7	17.7	13	13.9
2	14.3	8	7.1	14	7.7
3	21.9	9	19.7	15	13.3
4	22.4	10	7	16	6
5	49.4	11	5.9		
6	32.4	12	11.7		



#### Legend

- Against State (Red)
- State Boundary
- Primary Forest Road
- Forest Access Route
- Administrative Access Only
- Private Gravel/Dirt
- Survey Grade Corner
- Streams
- Nearby Timber Sale
- Powerline





### TIMBER SALE MAP

This information provided by authority of Part 525, 1994 PA 451, as amended.

Sale Number	Date	
<b>32-002-26</b>	01/14/2026	
Scale	Page	Of
1:10,000	4	4

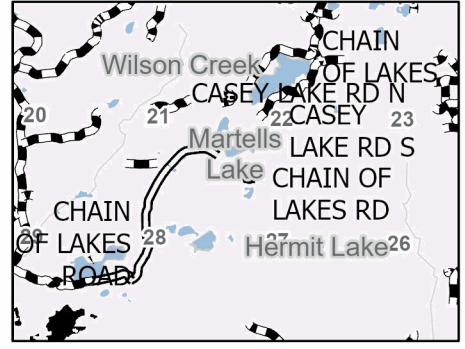
Forest Management Unit	County	Mapped By: Siler
Gwynn Mgt Unit	Marquette	Cruised By: Siler & Gould

Township	Range	Section(s) and Subdivision(s)
44N / 45N	29W	NWNW,SW,SE; Sec. 34 SW; Sec. 5 NESW,NWSE; Sec. 22 S1/2SW; Sec. 27 N1/2NW; Sec. 3 NWNW; Sec. 32 NW,NE,N1/2SW,SESW,SE; Sec. 33

Cover Type			
A = Aspen	J = Jack Pine	O = Oak	U = Upland Brush
B = Paper Birch	K = Rock	P = Lowland Poplar	UM = Upland Mix Forest
C = Cedar	L = Lowland Brush	Q = Mixed Swamp Conifer	V = Bog or Marsh
D = Treed Bog	LM = Lowland Mix Forest	R = Red Pine	W = White Pine
E = Swamp Hardwoods	M = Maple, Beech, Birch	S = Black Spruce	X = Non Stocked
F = Spruce/Fir	MC = Mixed Conifer	T = Tamarack	Y = Sand
G = Grass	MD = Mixed Deciduous	Z = Water	
H = Hemlock	N = Marsh		

Density	
0 = Non Stocked	5 = Pole Timber Medium
1 = Seedling Sapling Poor	6 = Pole Timber Well
2 = Seedling Sapling Medium	7 = Saw Timber Poor
3 = Seedling Sapling Well	8 = Saw Timber Medium
4 = Pole Timber Poor	9 = Saw Timber Well

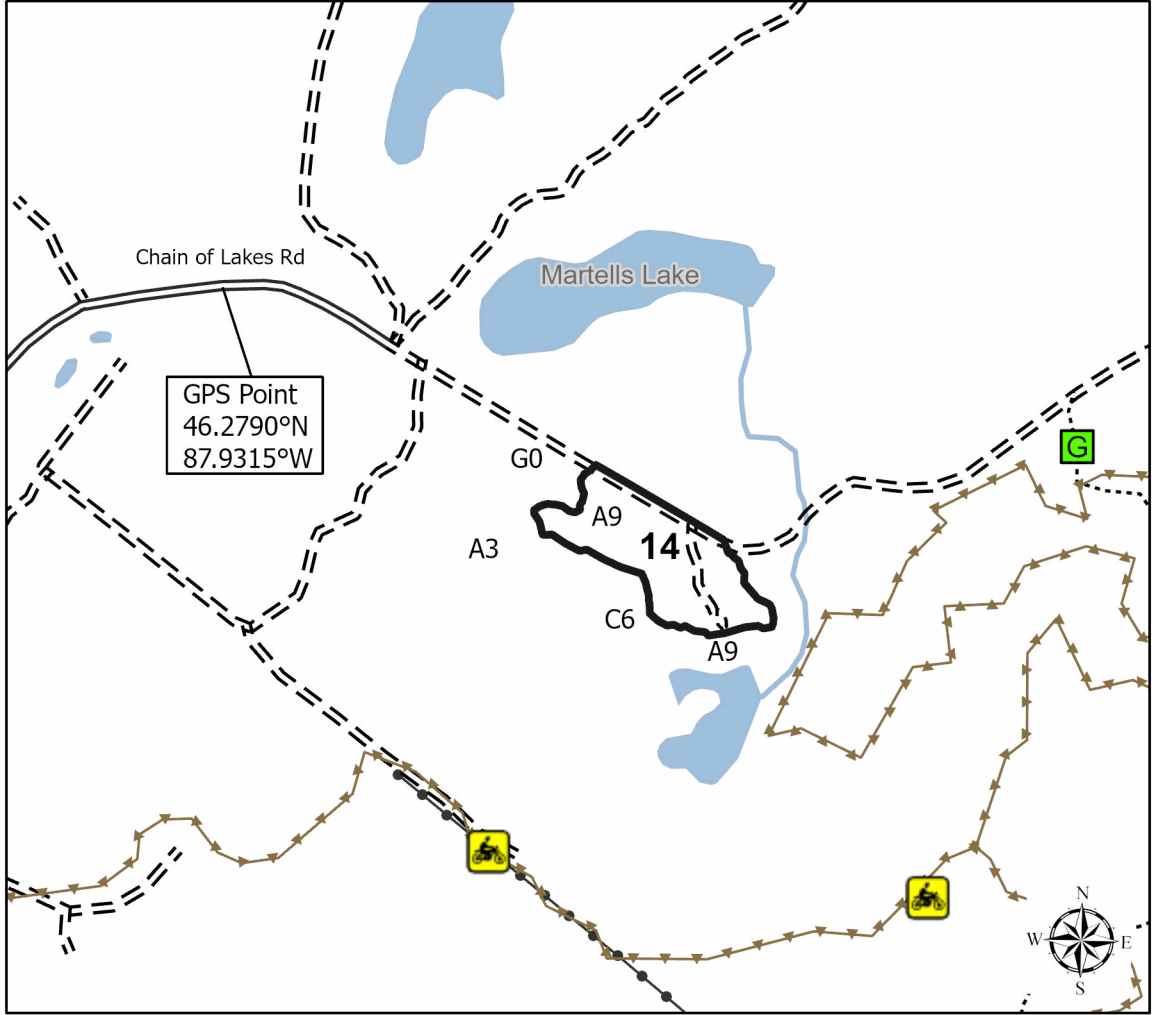
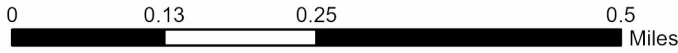
### Locator Map 1:100,000



Payment Unit	Acres	Payment Unit	Acres	Payment Unit	Acres
1	14.2	7	17.7	13	13.9
2	14.3	8	7.1	14	7.7
3	21.9	9	19.7	15	13.3
4	22.4	10	7	16	6
5	49.4	11	5.9		
6	32.4	12	11.7		

## Bear Blaster

**264.6 Acres**  
**Compartment:**  
**32245**  
**32243**  
**12008**



### Legend

- Against State (Red)
- Primary Forest Road
- Forest Access Route
- Administrative Access Only
- Private Gravel/Dirt
- Gate
- Lakes and Rivers
- Streams
- Nearby Timber Sale
- Powerline
- Motorcycle Trail

