

**TIMBER SALE MAP**

This information provided by authority of Part 525, 1994 PA 451, as amended.

Sale Number

54-008-24

Date

10/25/2024

Forest Management Unit

Atlanta Mgt Unit

County

Montmorency

Mapped By: D. Coy

Cruised By: D. Coy

Scale

1:15,840

Page

1

Of

1

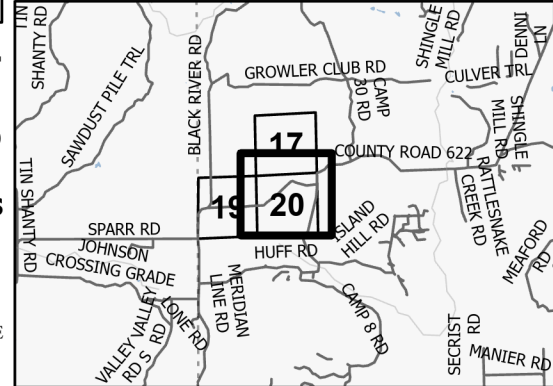
Township 31N Range 01E Section(s) and Subdivision(s) Sec. 17 S1/2SW,SWSE; Sec. 19 NENE; Sec. 20 N1/2SE; Sec. 20 NW,N1/2NE,SENE,N1/2SW,SESW;

Cover Type

| | | | |
|---------------------|-------------------------|-------------------------|------------------------|
| A = Aspen | J = Jack Pine | O = Oak | U = Upland Brush |
| B = Paper Birch | K = Rock | P = Lowland Poplar | UM = Upland Mix Forest |
| C = Cedar | L = Lowland Brush | Q = Mixed Swamp Conifer | V = Bog or Marsh |
| D = Treed Bog | LM = Lowland Mix Forest | R = Red Pine | W = White Pine |
| E = Swamp Hardwoods | M = Maple, Beech, Birch | S = Black Spruce | X = Non Stocked |
| F = Spruce/Fir | MC = Mixed Conifer | T = Tamarack | Y = Sand |
| G = Grass | MD = Mixed Deciduous | Z = Water | |
| H = Hemlock | N = Marsh | | |

Density

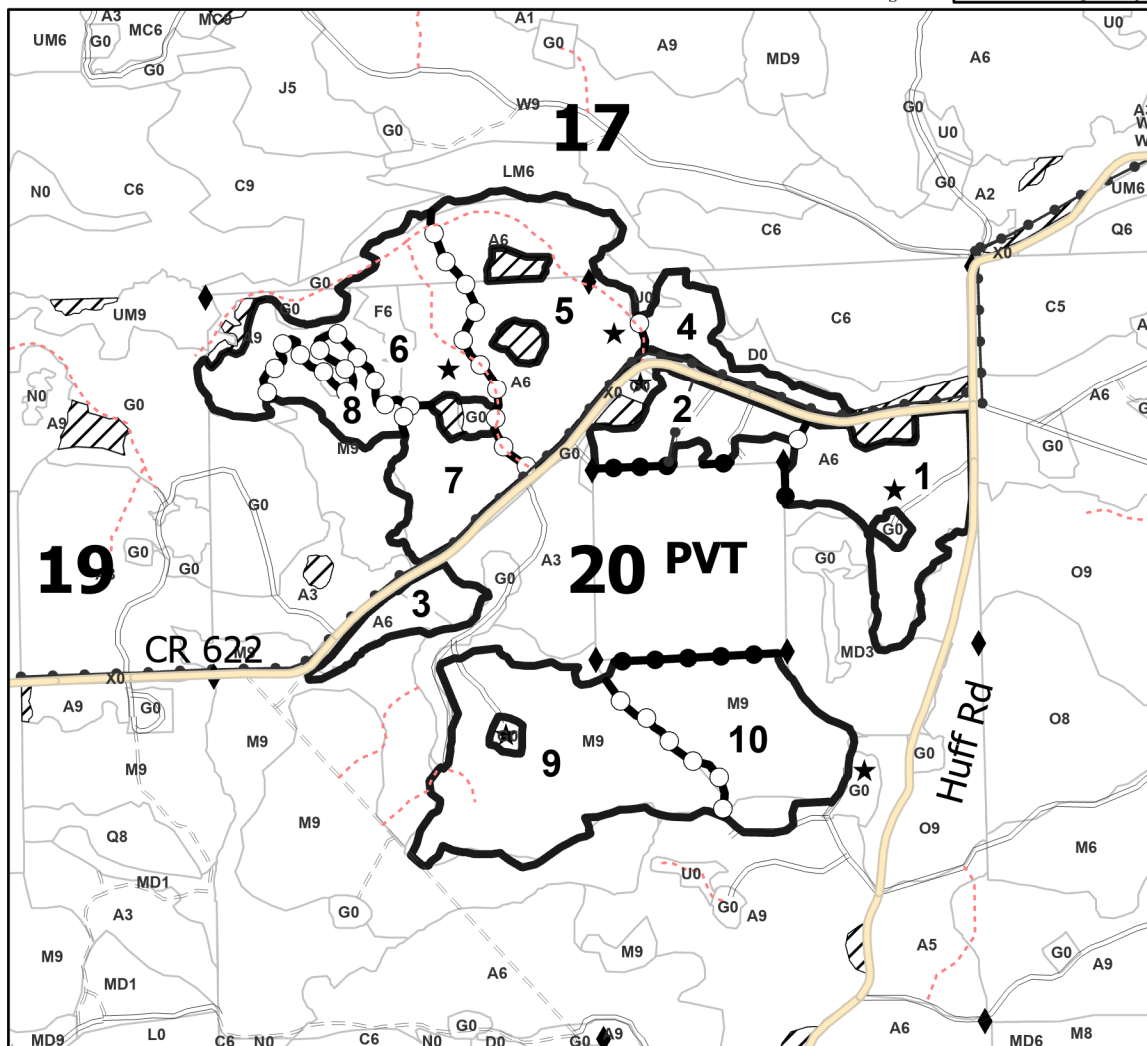
| | |
|-----------------------------|------------------------|
| 0 = Non Stocked | 5 = Pole Timber Medium |
| 1 = Seedling Sapling Poor | 6 = Pole Timber Well |
| 2 = Seedling Sapling Medium | 7 = Saw Timber Poor |
| 3 = Seedling Sapling Well | 8 = Saw Timber Medium |
| 4 = Pole Timber Poor | 9 = Saw Timber Well |

Locator Map (1:200,000)

| PU # | Acres | PU # | Acres |
|------|-------|------|-------|
| 1 | 24.1 | 6 | 29.3 |
| 2 | 12.0 | 7 | 13.3 |
| 3 | 7.3 | 8 | 8.2 |
| 4 | 8.8 | 9 | 42.4 |
| 5 | 36.2 | 10 | 28 |

**Huff and 622
West Aspen
HWD****209.6 Acres**

0 0.25 0.5 1 Miles

**Legend**

- Sale Boundary- Red Paint
- Stand
- Retention Areas
- Payment Unit (Yellow)
- Private Line (Blue)
- Secondary Forest Road
- Forest Access Route
- Administrative Access Only
- Non-DNR Road
- Powerline
- Landing
- Survey Grade Corner

