



TIMBER SALE MAP

This information provided by authority of Part 525, 1994 PA 451, as amended.

Sale Number  
**54-012-25**

Date  
**04/28/2025**

|                        |       |  |             |          |      |    |
|------------------------|-------|--|-------------|----------|------|----|
| Forest Management Unit |       | County   | Mapped By:  | Scale    | Page | Of |
| Atlanta Mgt Unit       |       | Montmorency  | Cruised By: | 1:12,000 | 1    | 1  |
| Township               | Range | Section(s) and E1/2NW,W1/2NE;<br>Subdivision(s) Sec. 27 SWNW; Sec. 28 NWNW,SENE,NESE; Sec. 29 N1/2NW,NE; Sec. 30 E1/2NW,NE; Sec. 5 |             |          |      |    |
| 31N                    | 02E   |  |             |          |      |    |

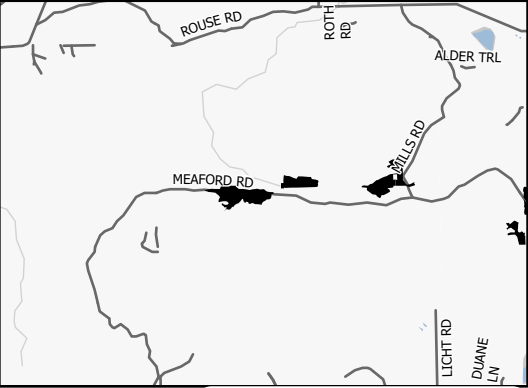
Cover Type

|                     |                         |                         |                        |
|---------------------|-------------------------|-------------------------|------------------------|
| A = Aspen           | J = Jack Pine           | O = Oak                 | U = Upland Brush       |
| B = Paper Birch     | K = Rock                | P = Lowland Poplar      | UM = Upland Mix Forest |
| C = Cedar           | L = Lowland Brush       | Q = Mixed Swamp Conifer | V = Bog or Marsh       |
| D = Treed Bog       | LM = Lowland Mix Forest | R = Red Pine            | W = White Pine         |
| E = Swamp Hardwoods | M = Maple, Beech, Birch | S = Black Spruce        | X = Non Stocked        |
| F = Spruce/Fir      | MC = Mixed Conifer      | T = Tamarack            | Y = Sand               |
| G = Grass           | MD = Mixed Deciduous    |                         | Z = Water              |
| H = Hemlock         | N = Marsh               |                         |                        |

Density

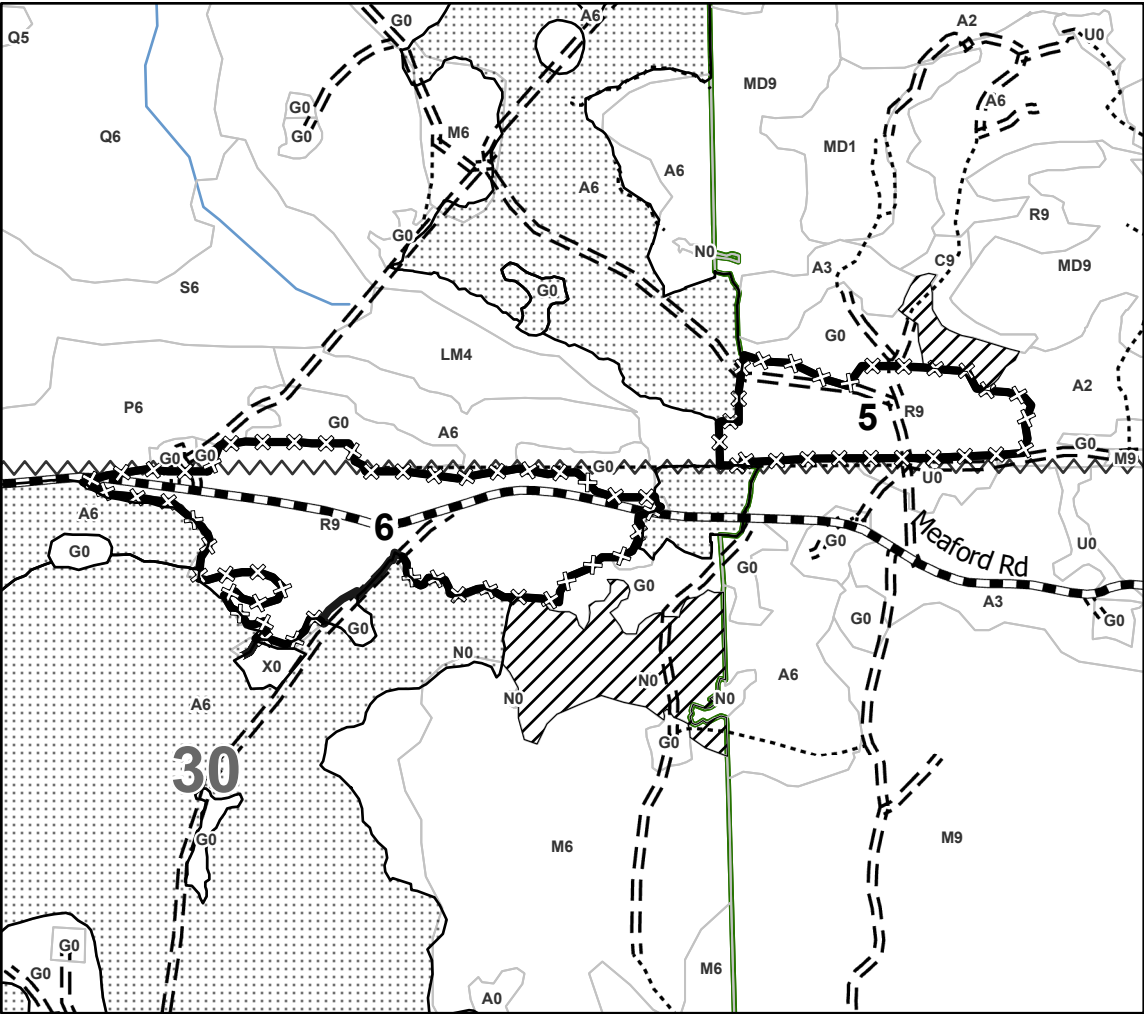
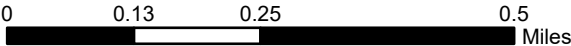
|                             |                        |
|-----------------------------|------------------------|
| 0 = Non Stocked             | 5 = Pole Timber Medium |
| 1 = Seedling Sapling Poor   | 6 = Pole Timber Well   |
| 2 = Seedling Sapling Medium | 7 = Saw Timber Poor    |
| 3 = Seedling Sapling Well   | 8 = Saw Timber Medium  |
| 4 = Pole Timber Poor        | 9 = Saw Timber Well    |

Locator Map 1:100,000



**Ice Meaford Red Pine Salvage**  
**118.2 Acres**  
**Compartment 42 & 43**

| Payment Unit Number | Acres |
|---------------------|-------|
| 1                   | 12    |
| 2                   | 8.5   |
| 3                   | 10.1  |
| 4                   | 17.3  |
| 5                   | 15.7  |
| 6                   | 35.7  |
| 7                   | 18.9  |



Legend

- Payment Unit
- Against State (Unpainted)
- Forest Access Route
- Administrative Access Only
- Government Gravel/Dirt
- Abandoned Railroad
- Recreational Trails
- Nearby Timber Sale
- Retention Areas

Use QR Code to  
open Map in App

