



### TIMBER SALE MAP

This information provided by authority of Part 525, 1994 PA 451, as amended.

Sale Number <b>12-803-26</b>	Date <b>06/01/2026</b>	
Scale <b>1:15,840</b>	Page <b>1</b>	Of <b>1</b>

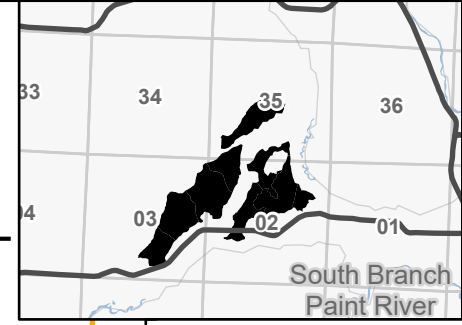
Forest Management Unit <b>Crystal Falls Mgt Unit</b>	County <b>Iron</b>	Mapped By: Collins Cruised By: Collins, Sullivan, Yeo
---	-----------------------	--

Township <b>44N / 45N</b>	Range <b>36W</b>	Section(s) and Subdivision(s) <b>Sec. 2 NW,NE,N1/2SW; Sec. 3 NENE,S1/2NE,SESW,N1/2SE,SWSE; Sec. 35 SENW,SW,W1/2SE;</b>
------------------------------	---------------------	--

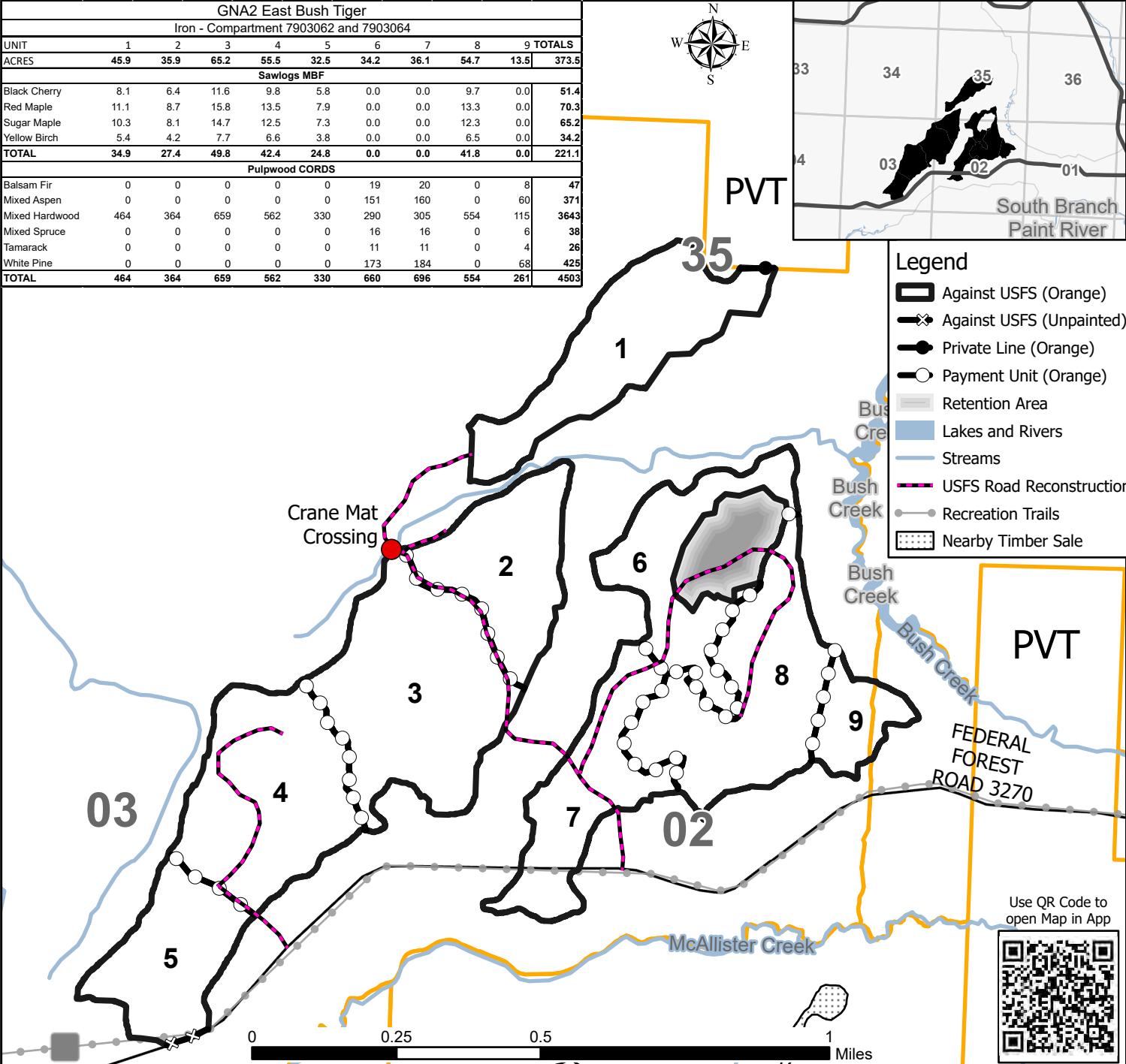
Cover Type			
A = Aspen	J = Jack Pine	O = Oak	U = Upland Brush
B = Paper Birch	K = Rock	P = Lowland Poplar	UM = Upland Mix Forest
C = Cedar	L = Lowland Brush	Q = Mixed Swamp Conifer	V = Bog or Marsh
D = Treed Bog	LM = Lowland Mix Forest	R = Red Pine	W = White Pine
E = Swamp Hardwoods	M = Maple, Beech, Birch	S = Black Spruce	X = Non Stocked
F = Spruce/Fir	MC = Mixed Conifer	T = Tamarack	Y = Sand
G = Grass	MD = Mixed Deciduous	Z = Water	
H = Hemlock	N = Marsh		

Density	
0 = Non Stocked	5 = Pole Timber Medium
1 = Seedling Sapling Poor	6 = Pole Timber Well
2 = Seedling Sapling Medium	7 = Saw Timber Poor
3 = Seedling Sapling Well	8 = Saw Timber Medium
4 = Pole Timber Poor	9 = Saw Timber Well

### Locator Map 1:100,000



GNA2 East Bush Tiger										
Iron - Compartment 7903062 and 7903064										
UNIT	1	2	3	4	5	6	7	8	9	TOTALS
ACRES	45.9	35.9	65.2	55.5	32.5	34.2	36.1	54.7	13.5	373.5
Sawlogs MBF										
Black Cherry	8.1	6.4	11.6	9.8	5.8	0.0	0.0	9.7	0.0	51.4
Red Maple	11.1	8.7	15.8	13.5	7.9	0.0	0.0	13.3	0.0	70.3
Sugar Maple	10.3	8.1	14.7	12.5	7.3	0.0	0.0	12.3	0.0	65.2
Yellow Birch	5.4	4.2	7.7	6.6	3.8	0.0	0.0	6.5	0.0	34.2
<b>TOTAL</b>	<b>34.9</b>	<b>27.4</b>	<b>49.8</b>	<b>42.4</b>	<b>24.8</b>	<b>0.0</b>	<b>0.0</b>	<b>41.8</b>	<b>0.0</b>	<b>221.1</b>
Pulpwood CORDS										
Balsam Fir	0	0	0	0	0	19	20	0	8	47
Mixed Aspen	0	0	0	0	0	151	160	0	60	371
Mixed Hardwood	464	364	659	562	330	290	305	554	115	3643
Mixed Spruce	0	0	0	0	0	16	16	0	6	38
Tamarack	0	0	0	0	0	11	11	0	4	26
White Pine	0	0	0	0	0	173	184	0	68	425
<b>TOTAL</b>	<b>464</b>	<b>364</b>	<b>659</b>	<b>562</b>	<b>330</b>	<b>660</b>	<b>696</b>	<b>554</b>	<b>261</b>	<b>4503</b>



Use QR Code to open Map in App

