

**TIMBER SALE MAP**

This information provided by authority of Part 525, 1994 PA 451, as amended.

Sale Number

**73-007-25**

Date

**06/16/2025**

Forest Management Unit

Gladwin Mgt Unit

County

Clare

Mapped By: Behrmann

Cruised By: Behrmann

Scale

**1:7,920**

Page

**2**

Of

**2**

Township

17N / 18N

Range

06W

Section(s) and

Subdivision(s) Sec. 33 SESW; Sec. 35 SW; Sec. 4 N1/2NW,SENW;

**Cover Type**

|                     |                         |                         |                        |
|---------------------|-------------------------|-------------------------|------------------------|
| A = Aspen           | J = Jack Pine           | O = Oak                 | U = Upland Brush       |
| B = Paper Birch     | K = Rock                | P = Lowland Poplar      | UM = Upland Mix Forest |
| C = Cedar           | L = Lowland Brush       | Q = Mixed Swamp Conifer | V = Bog or Marsh       |
| D = Treed Bog       | LM = Lowland Mix Forest | R = Red Pine            | W = White Pine         |
| E = Swamp Hardwoods | M = Maple, Beech, Birch | S = Black Spruce        | X = Non Stocked        |
| F = Spruce/Fir      | MC = Mixed Conifer      | T = Tamarack            | Y = Sand               |
| G = Grass           | MD = Mixed Deciduous    | Z = Water               |                        |
| H = Hemlock         | N = Marsh               |                         |                        |

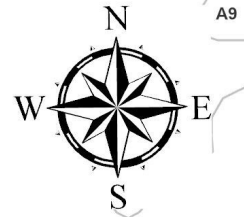
**Density**

|                             |                        |
|-----------------------------|------------------------|
| 0 = Non Stocked             | 5 = Pole Timber Medium |
| 1 = Seedling Sapling Poor   | 6 = Pole Timber Well   |
| 2 = Seedling Sapling Medium | 7 = Saw Timber Poor    |
| 3 = Seedling Sapling Well   | 8 = Saw Timber Medium  |
| 4 = Pole Timber Poor        | 9 = Saw Timber Well    |

**Payment Unit  
Number****Acres**

|   |      |
|---|------|
| 1 | 15   |
| 2 | 51.5 |

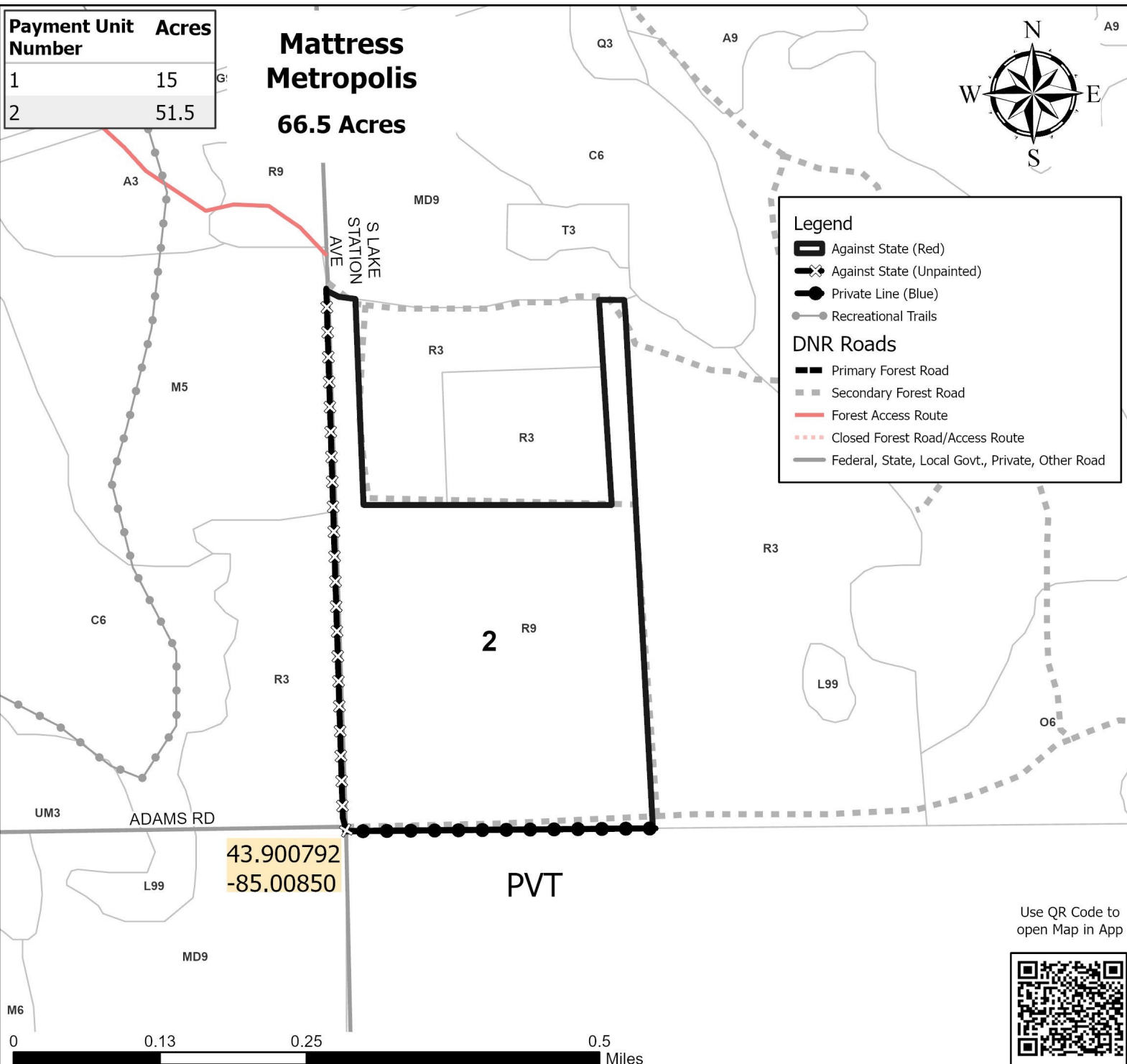
**Mattress  
Metropolis**  
**66.5 Acres**

**Legend**

- Against State (Red)
- Against State (Unpainted)
- Private Line (Blue)
- Recreational Trails

**DNR Roads**

- Primary Forest Road
- Secondary Forest Road
- Forest Access Route
- Closed Forest Road/Access Route
- Federal, State, Local Govt., Private, Other Road



43.900792  
-85.00850

PVT

Use QR Code to  
open Map in App

