

**TIMBER SALE MAP**

This information provided by authority of Part 525, 1994 PA 451, as amended.

Sale Number

32-006-25

Date

07/08/2025

Forest Management Unit

Gwinn Mgt Unit

County

Marquette

Mapped By: Jacob Siler

Cruised By: Gould & Siler

Scale

1:15,840

Page

1

Of

1

Township

46N

Range

25W

Section(s) and

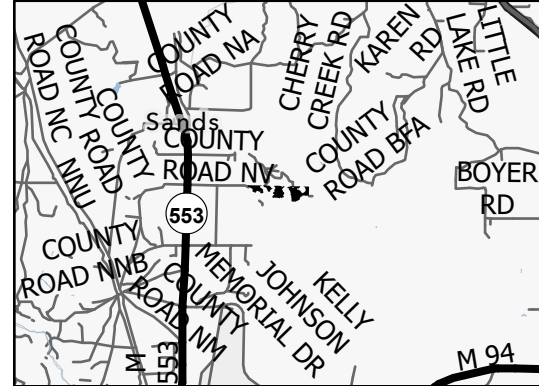
Subdivision(s) Sec. 12 N1/2NW,NE;

Cover Type

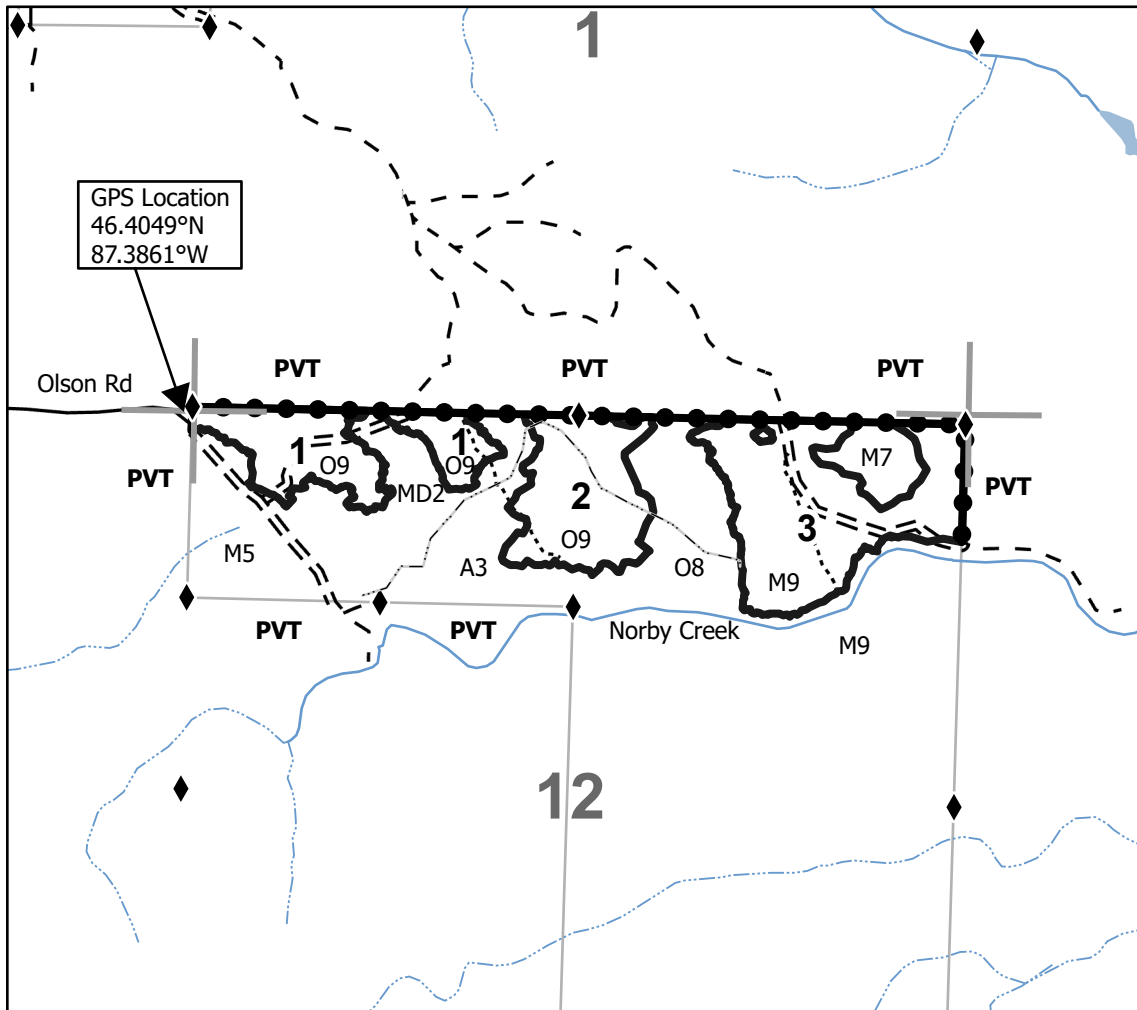
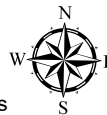
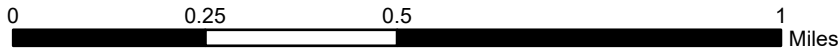
A = Aspen	J = Jack Pine	O = Oak	U = Upland Brush
B = Paper Birch	K = Rock	P = Lowland Poplar	UM = Upland Mix Forest
C = Cedar	L = Lowland Brush	Q = Mixed Swamp Conifer	V = Bog or Marsh
D = Treed Bog	LM = Lowland Mix Forest	R = Red Pine	W = White Pine
E = Swamp Hardwoods	M = Maple, Beech, Birch	S = Black Spruce	X = Non Stocked
F = Spruce/Fir	MC = Mixed Conifer	T = Tamarack	Y = Sand
G = Grass	MD = Mixed Deciduous	Z = Water	
H = Hemlock	N = Marsh		

Density

0 = Non Stocked	5 = Pole Timber Medium
1 = Seedling Sapling Poor	6 = Pole Timber Well
2 = Seedling Sapling Medium	7 = Saw Timber Poor
3 = Seedling Sapling Well	8 = Saw Timber Medium
4 = Pole Timber Poor	9 = Saw Timber Well

Locator Map 1:200,000

Payment Unit Number	Acres
1	17.7
2	19.3
3	33

**Ridge Runner Hardwood
Compartment 275
70.0 Acres****Legend**

- Against State (Red)
- Private Line (Blue)
- State Boundary
- Forest Access Route
- Administrative Access Only
- Paved Road
- Government Gravel/Dirt
- Private Gravel/Dirt
- Proposed Pre-Haul Road
- Intermittent Stream
- Perennial River
- Survey Grade Corner
- Section Corner

