



TIMBER SALE MAP

This information provided by authority of Part 525, 1994 PA 451, as amended.

Sale Number
32-008-25

Date
07/08/2025

Forest Management Unit	County	Mapped By: Siler	Scale	Page	Of
Gwinn Mgt Unit	Marquette	Cruised By: Gould & Siler	1:15,840	1	1
Township 46N	Range 28W	Section(s) and Subdivision(s) Sec. 22 SENE; Sec. 23 N1/2SW,SESW,SE; Sec. 26 NENE;			

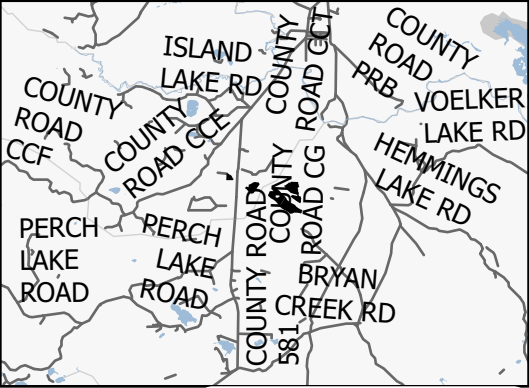
Cover Type

A = Aspen	J = Jack Pine	O = Oak	U = Upland Brush
B = Paper Birch	K = Rock	P = Lowland Poplar	UM = Upland Mix Forest
C = Cedar	L = Lowland Brush	Q = Mixed Swamp Conifer	V = Bog or Marsh
D = Treed Bog	LM = Lowland Mix Forest	R = Red Pine	W = White Pine
E = Swamp Hardwoods	M = Maple, Beech, Birch	S = Black Spruce	X = Non Stocked
F = Spruce/Fir	MC = Mixed Conifer	T = Tamarack	Y = Sand
G = Grass	MD = Mixed Deciduous		Z = Water
H = Hemlock	N = Marsh		

Density

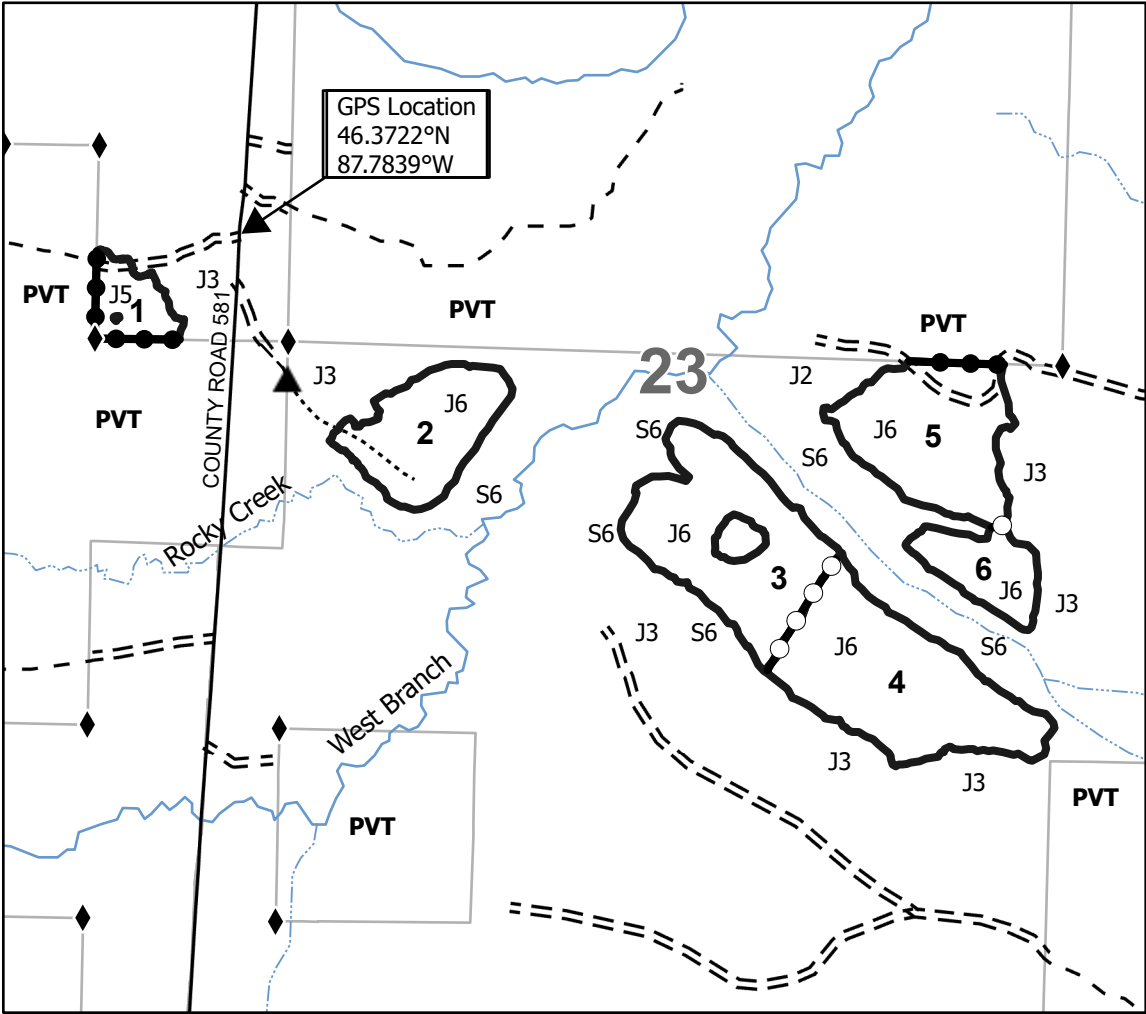
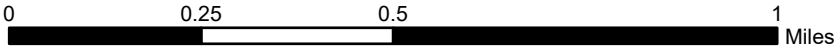
0 = Non Stocked	5 = Pole Timber Medium
1 = Seedling Sapling Poor	6 = Pole Timber Well
2 = Seedling Sapling Medium	7 = Saw Timber Poor
3 = Seedling Sapling Well	8 = Saw Timber Medium
4 = Pole Timber Poor	9 = Saw Timber Well

Locator Map 1:200,000



Payment Unit Number	Acres	Payment Unit Number	Acres
1	5.9	4	30.8
2	16.3	5	22.8
3	27.6	6	8.4

Standby Pine
Compartment 255/228
111.8 Acres



Legend

- Against State (Red)
- Private Line (Blue)
- Payment Unit (Yellow)
- State Boundary
- Forest Access Route
- Administrative Access Only
- Paved Road
- Private Gravel/Dirt
- Recreational Trails
- Intermittent Stream
- Perennial River
- Survey Grade Corner
- Berm

