



TIMBER SALE MAP

This information provided by authority of Part 525, 1994 PA 451, as amended.

Sale Number

32-015-25

Date

07/29/2025

Forest Management Unit

County

Mapped By: Matt Yeo

Scale

Page

Of

Gwinn Mgt Unit

Marquette

Cruised By: Gwinn Staff

1:13,000

1

2

Township 43N Range 25W Section(s) and Subdivision(s) N1/2NW,SENW,W1/2NE,NESW,NWSE; Sec. 32 S1/2SE; Sec. 28 SWNW; Sec. 29 S1/2NW,NWNE,S1/2NE,SESW,SWSE; Sec. 30 SENE; Sec. 32

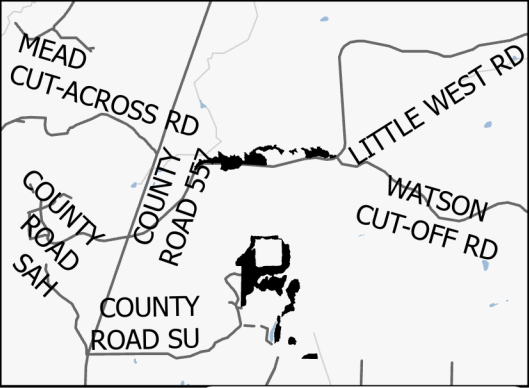
Cover Type

A = Aspen J = Jack Pine O = Oak U = Upland Brush
B = Paper Birch K = Rock P = Lowland Poplar UM = Upland Mix Forest
C = Cedar L = Lowland Brush Q = Mixed Swamp Conifer V = Bog or Marsh
D = Treed Bog LM = Lowland Mix Forest R = Red Pine W = White Pine
E = Swamp Hardwoods M = Maple, Beech, Birch S = Black Spruce X = Non Stocked
F = Spruce/Fir MC = Mixed Conifer T = Tamarack Y = Sand
G = Grass MD = Mixed Deciduous Z = Water
H = Hemlock N = Marsh

Density

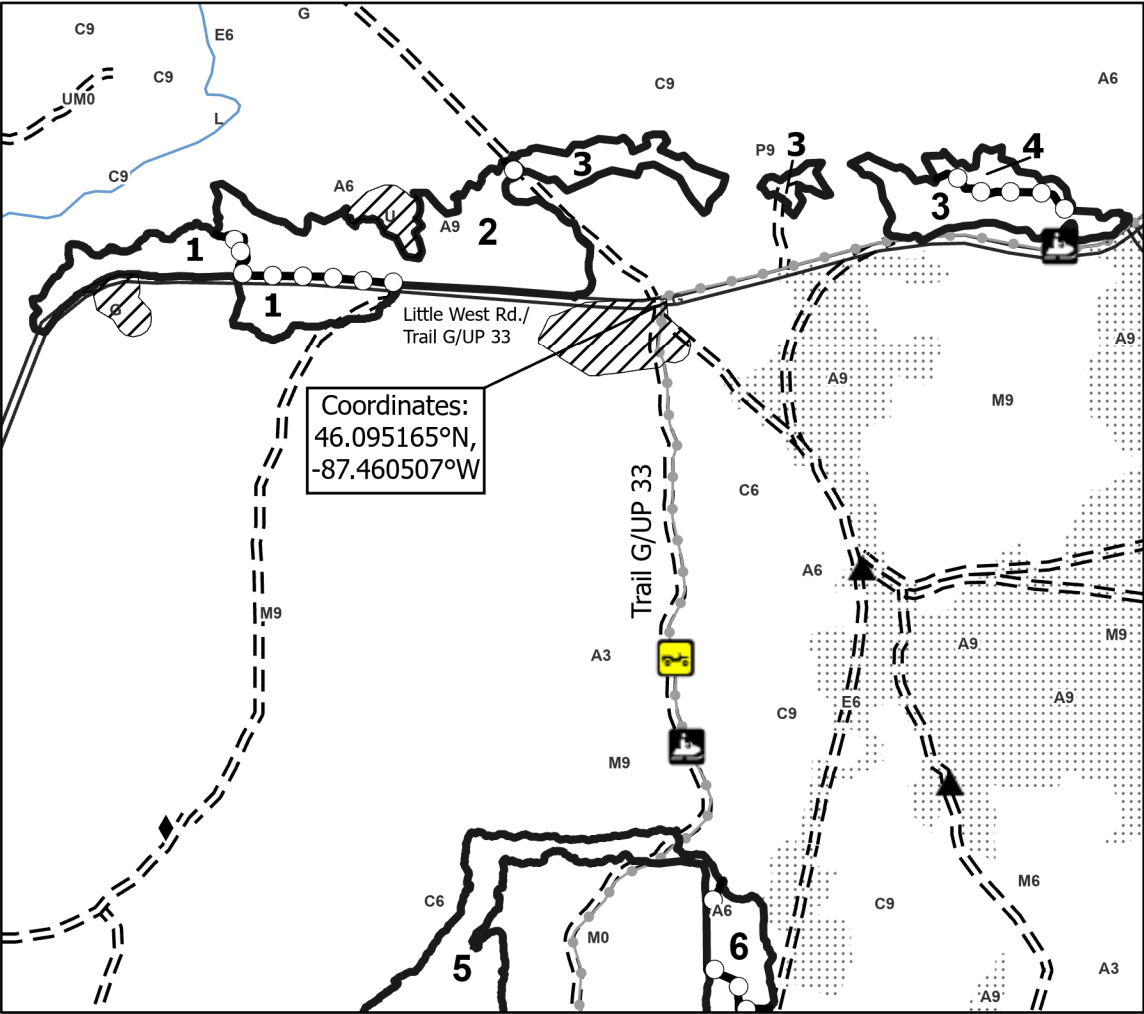
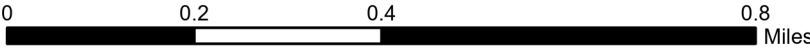
0 = Non Stocked 5 = Pole Timber Medium
1 = Seedling Sapling Poor 6 = Pole Timber Well
2 = Seedling Sapling Medium 7 = Saw Timber Poor
3 = Seedling Sapling Well 8 = Saw Timber Medium
4 = Pole Timber Poor 9 = Saw Timber Well

Locator Map 1:100,000



Payment Unit Number	Acres	Payment Unit Number	Acres
1	11.2	7	32
2	19.2	8	13.4
3	13	9	12.6
4	2.5	10	5.3
5	23.4	11	2.3
6	4.2	12	3.1

Two Cup Cats
142.3 Acres
COMPARTMENT 70



Legend

- Against State (Red)
- Payment Unit (Yellow)
- Special Protection Area
- Recreational Trails
- Primary Forest Road
- Forest Access Route
- ORV Route
- Snowmobile
- Survey Grade Corner
- Berm
- Nearby Timber Sale

Use QR Code to open Map in App

