



TIMBER SALE MAP

This information provided by authority of Part 525, 1994 PA 451, as amended.

Sale Number 32-011-26	Date 04/02/2026
Scale 1:24,000	Page 1
	Of 2

Forest Management Unit Gwinn Mgt Unit	County Marquette	Mapped By: Siler
		Cruised By: Siler & Gould

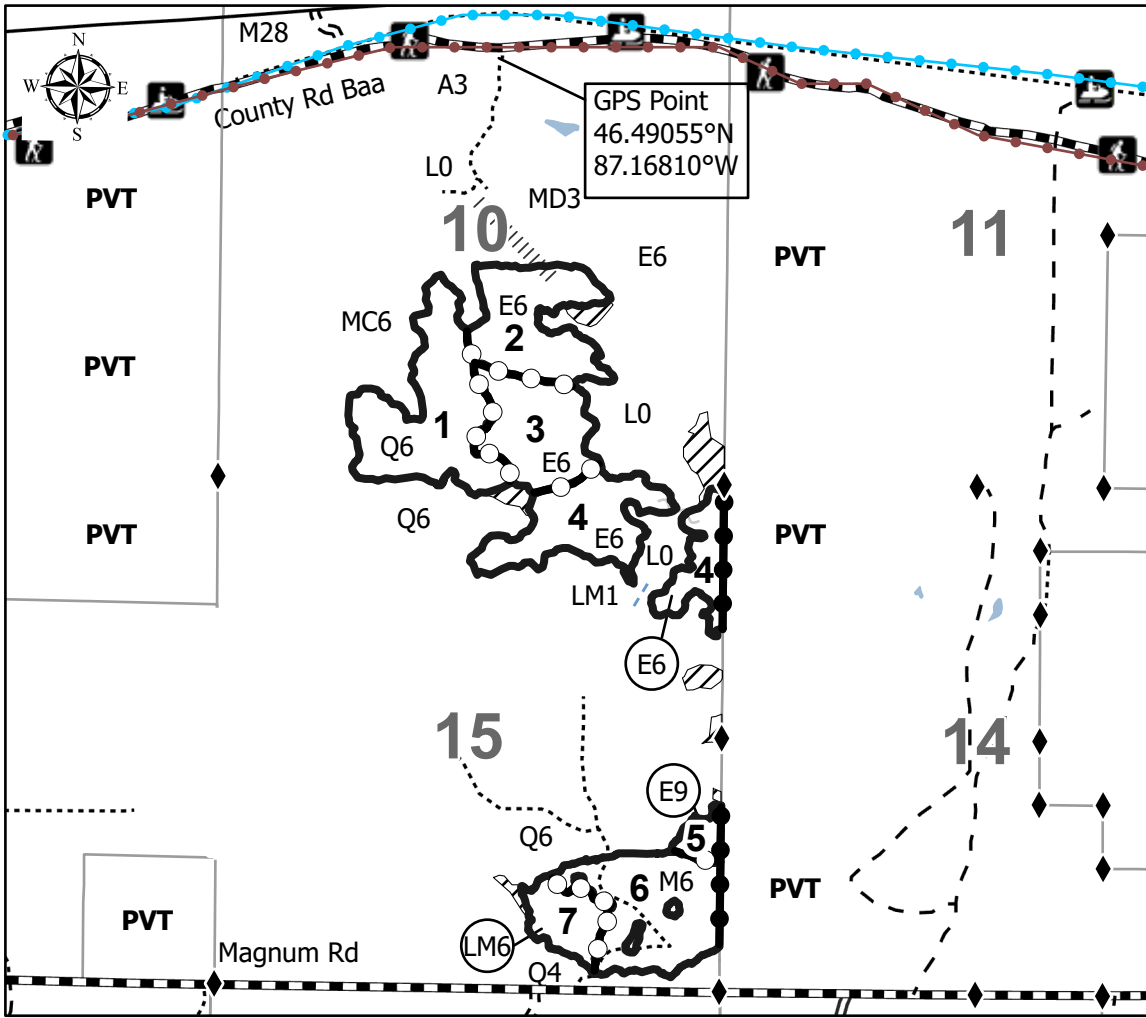
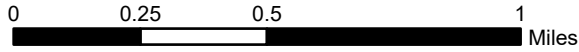
Township 47N	Range 23W	Section(s) and Subdivision(s) NENW,N1/2NE,SENE,SE; Sec. 10 E1/2SW,SE; Sec. 12 SESE; Sec. 13 NENE,SESW,NESE,S1/2SE; Sec. 15
------------------------	---------------------	--

Cover Type			
A = Aspen	J = Jack Pine	O = Oak	U = Upland Brush
B = Paper Birch	K = Rock	P = Lowland Poplar	UM = Upland Mix Forest
C = Cedar	L = Lowland Brush	Q = Mixed Swamp Conifer	V = Bog or Marsh
D = Treed Bog	LM = Lowland Mix Forest	R = Red Pine	W = White Pine
E = Swamp Hardwoods	M = Maple, Beech, Birch	S = Black Spruce	X = Non Stocked
F = Spruce/Fir	MC = Mixed Conifer	T = Tamarack	Y = Sand
G = Grass	MD = Mixed Deciduous	Z = Water	
H = Hemlock	N = Marsh		

Density	
0 = Non Stocked	5 = Pole Timber Medium
1 = Seedling Sapling Poor	6 = Pole Timber Well
2 = Seedling Sapling Medium	7 = Saw Timber Poor
3 = Seedling Sapling Well	8 = Saw Timber Medium
4 = Pole Timber Poor	9 = Saw Timber Well

Payment Unit Number	Acres	Payment Unit Number	Acres	Payment Unit Number	Acres
1	42.4	6	35	11	2.4
2	30.1	7	12.2	12	3.3
3	26.5	8	6.5	13	9
4	39.9	9	5.5		
5	4.4	10	2.5		

Hiker's Paradise
Compartments
32282
32283
219.7 Acres



Legend

- Against State (Red)
- Private Line (Blue)
- Payment Unit (Yellow)
- State Boundary
- Retention Areas
- Primary Forest Road
- Forest Access Route
- Administrative Access Only
- Paved Road
- Government Gravel/Dirt
- Private Gravel/Dirt
- Proposed Road
- Lakes and Rivers
- Streams
- Survey Grade Corner
- Hiking Trail
- Snowmobile Trail

