



TIMBER SALE MAP

This information provided by authority of Part 525, 1994 PA 451, as amended.

Sale Number 42-006-26	Date 03/24/2026	
Scale 1:7,920	Page 1	Of 1

Forest Management Unit Newberry Mgt Unit	County Chippewa	Mapped By: Matt Payment
		Cruised By: DNR Staff

Township 49N	Range 06W	Section(s) and Subdivision(s) Sec. 7 SENW,S1/2NE,N1/2SE; Sec. 8 S1/2NW,NWSW;
------------------------	---------------------	--

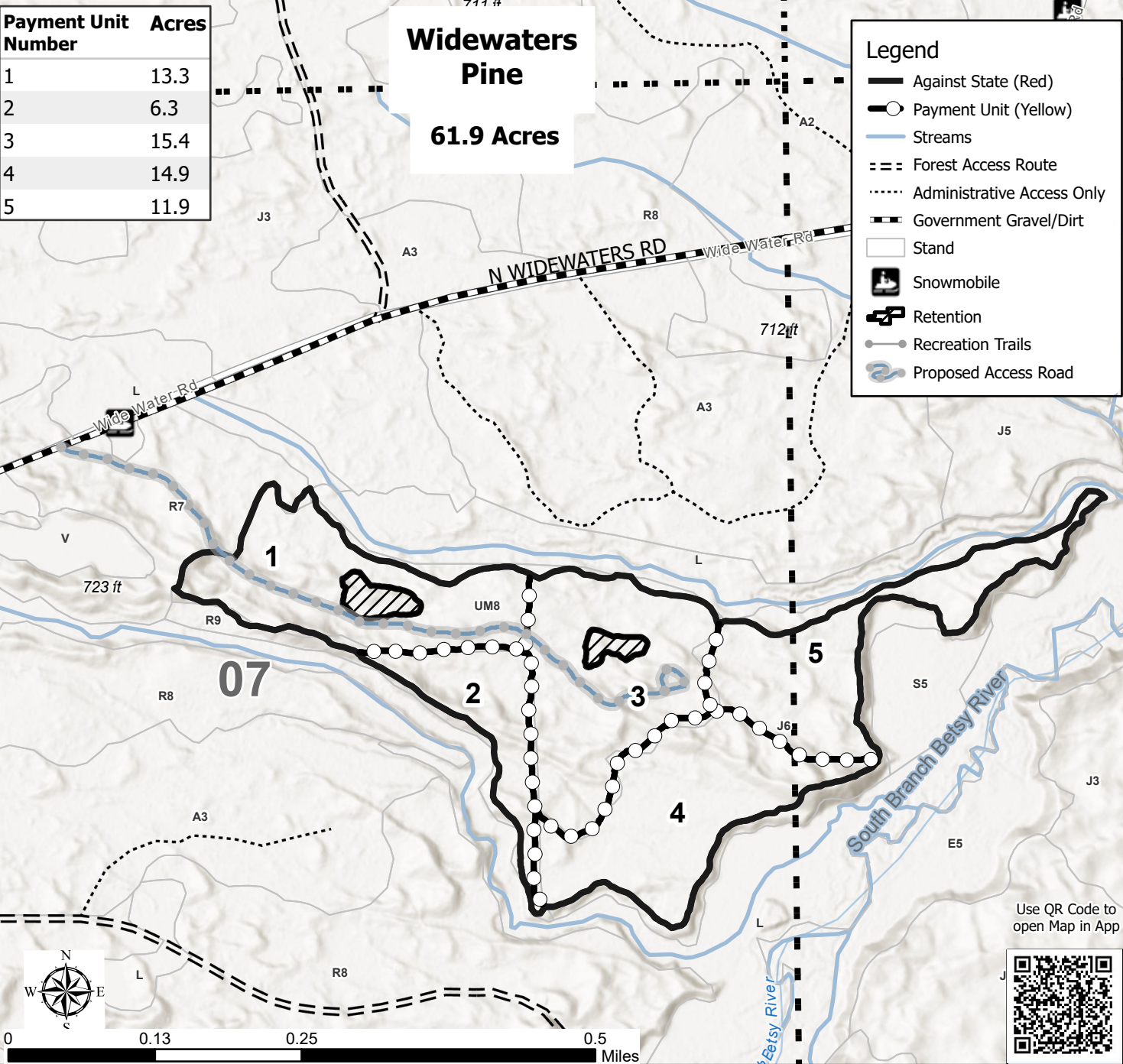
Cover Type			
A = Aspen	J = Jack Pine	O = Oak	U = Upland Brush
B = Paper Birch	K = Rock	P = Lowland Poplar	UM = Upland Mix Forest
C = Cedar	L = Lowland Brush	Q = Mixed Swamp Conifer	V = Bog or Marsh
D = Treed Bog	LM = Lowland Mix Forest	R = Red Pine	W = White Pine
E = Swamp Hardwoods	M = Maple, Beech, Birch	S = Black Spruce	X = Non Stocked
F = Spruce/Fir	MC = Mixed Conifer	T = Tamarack	Y = Sand
G = Grass	MD = Mixed Deciduous	Z = Water	
H = Hemlock	N = Marsh		

Density	
0 = Non Stocked	5 = Pole Timber Medium
1 = Seedling Sapling Poor	6 = Pole Timber Well
2 = Seedling Sapling Medium	7 = Saw Timber Poor
3 = Seedling Sapling Well	8 = Saw Timber Medium
4 = Pole Timber Poor	9 = Saw Timber Well

Payment Unit Number	Acres
1	13.3
2	6.3
3	15.4
4	14.9
5	11.9

Widewaters Pine
61.9 Acres

Legend	
	Against State (Red)
	Payment Unit (Yellow)
	Streams
	Forest Access Route
	Administrative Access Only
	Government Gravel/Dirt
	Stand
	Snowmobile
	Retention
	Recreation Trails
	Proposed Access Road



Use QR Code to open Map in App

