



**TIMBER SALE MAP**

This information provided by authority of Part 525, 1994 PA 451, as amended.

Sale Number  
**53-013-24**

Date  
**09/21/2024**

Forest Management Unit	County	Mapped By: Joy Mittig	Scale	Page	Of
Pigeon River Country Mgt Unit	Cheboygan	Cruised By: Joy Mittig	1:10,000	3	3
Township 33N	Range 01W	Section(s) and NENE; Sec. 8 SESW,SWSE; Subdivision(s) Sec. 17 NENW,NWNE; Sec. 19 W1/2NW; Sec. 29 W1/2SW; Sec. 30 SWNE,N1/2SE,SESE; Sec. 31			

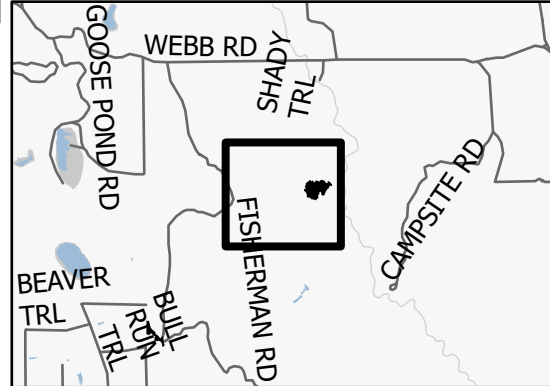
**Cover Type**

A = Aspen	J = Jack Pine	O = Oak	U = Upland Brush
B = Paper Birch	K = Rock	P = Lowland Poplar	UM = Upland Mix Forest
C = Cedar	L = Lowland Brush	Q = Mixed Swamp Conifer	V = Bog or Marsh
D = Treed Bog	LM = Lowland Mix Forest	R = Red Pine	W = White Pine
E = Swamp Hardwoods	M = Maple, Beech, Birch	S = Black Spruce	X = Non Stocked
F = Spruce/Fir	MC = Mixed Conifer	T = Tamarack	Y = Sand
G = Grass	MD = Mixed Deciduous		Z = Water
H = Hemlock	N = Marsh		

**Density**

0 = Non Stocked	5 = Pole Timber Medium
1 = Seedling Sapling Poor	6 = Pole Timber Well
2 = Seedling Sapling Medium	7 = Saw Timber Poor
3 = Seedling Sapling Well	8 = Saw Timber Medium
4 = Pole Timber Poor	9 = Saw Timber Well

**Locator Map (1:100,000)**

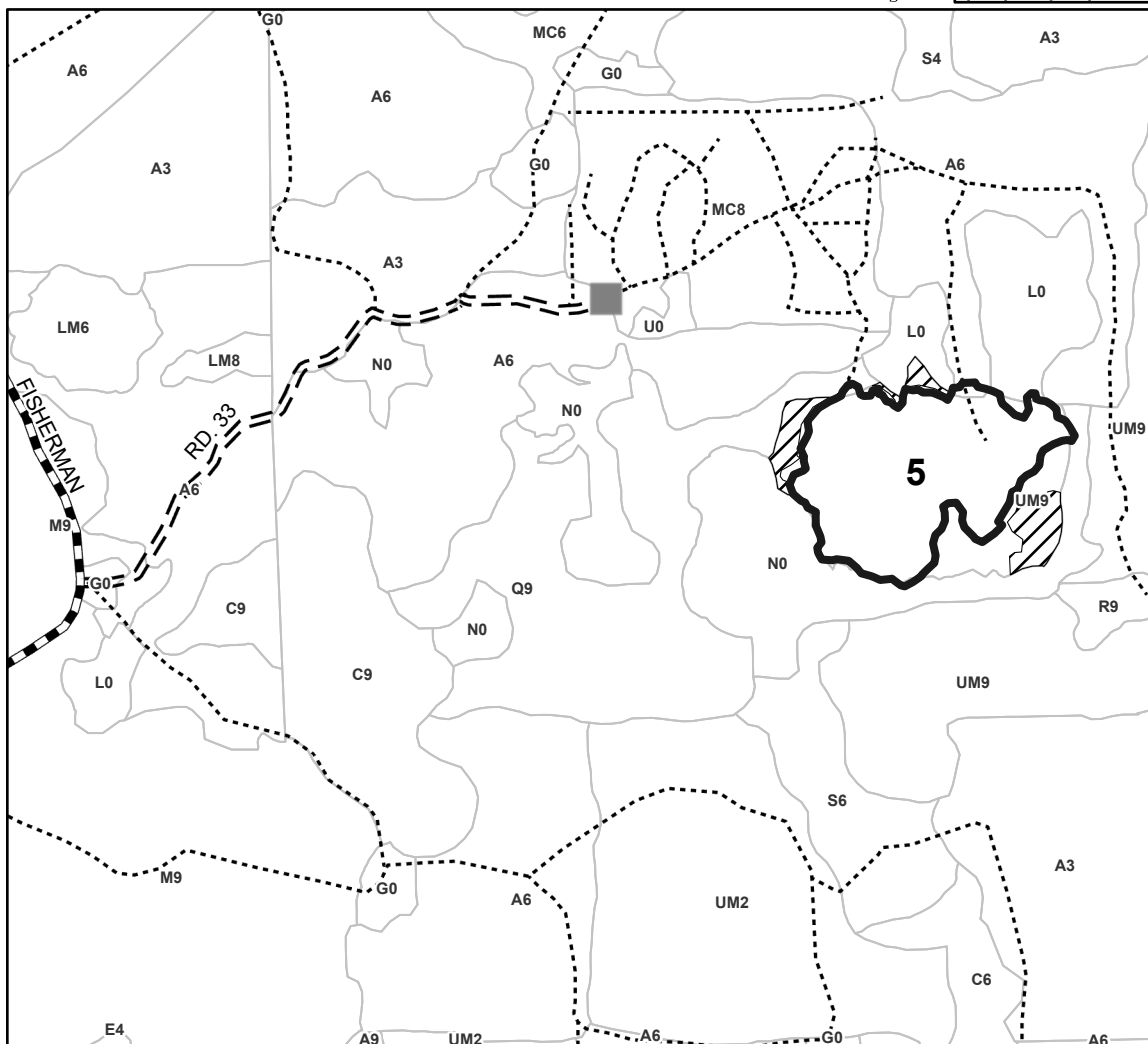
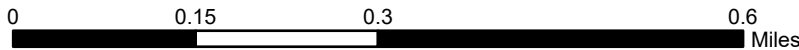


**PU # Acres**

1	29.3
2	22.4
3	9.8
4	5.5
5	15.3

**Fisherman  
Aspen 2**

**82.3 Acres**



**Legend**

- Against State (Red)
- Retention Areas
- Stand
- Forest Access Route
- Administrative Access Only
- Government Gravel/Dirt
- Gate

Use QR Code to open Map in App

