

**TIMBER SALE MAP**

This information provided by authority of Part 525, 1994 PA 451, as amended.

Sale Number

53-014-25

Date

05/02/2025

Forest Management Unit

Pigeon River Country Mgt Unit

County

Cheboygan

Mapped By: Rekowski

Cruised By: Scaled salvage sale

Scale

1:15,840

Page

1

Of

1

Township

34N

Range

01W

Section(s) and

Subdivision(s) Sec. 26 N1/2NW,SEW;

Cover Type

A = Aspen	J = Jack Pine	O = Oak	U = Upland Brush
B = Paper Birch	K = Rock	P = Lowland Poplar	UM = Upland Mix Forest
C = Cedar	L = Lowland Brush	Q = Mixed Swamp Conifer	V = Bog or Marsh
D = Treed Bog	LM = Lowland Mix Forest	R = Red Pine	W = White Pine
E = Swamp Hardwoods	M = Maple, Beech, Birch	S = Black Spruce	X = Non Stocked
F = Spruce/Fir	MC = Mixed Conifer	T = Tamarack	Y = Sand
G = Grass	MD = Mixed Deciduous		Z = Water
H = Hemlock	N = Marsh		

Density

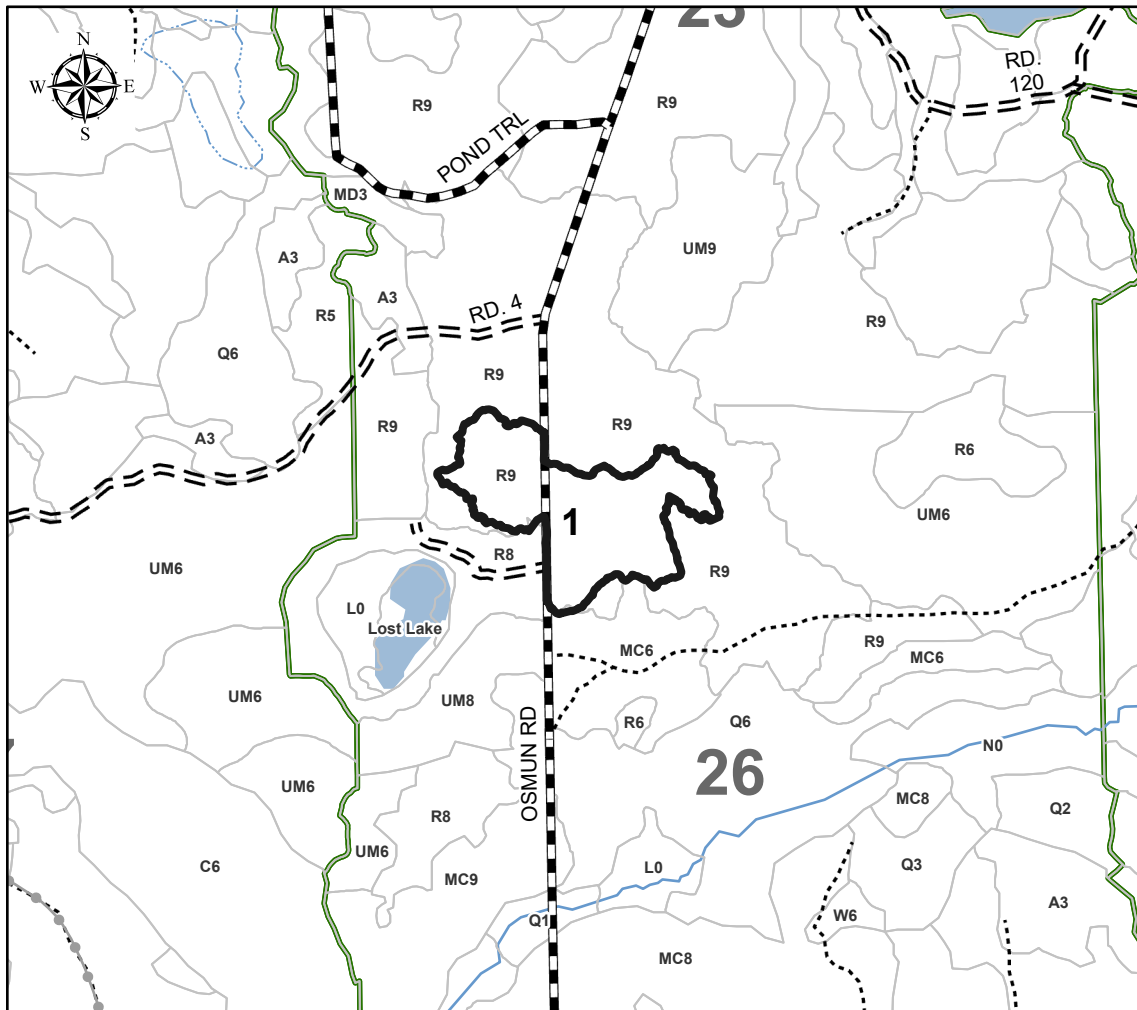
0 = Non Stocked	5 = Pole Timber Medium
1 = Seedling Sapling Poor	6 = Pole Timber Well
2 = Seedling Sapling Medium	7 = Saw Timber Poor
3 = Seedling Sapling Well	8 = Saw Timber Medium
4 = Pole Timber Poor	9 = Saw Timber Well

Payment Unit Number	Acres
---------------------	-------

1	28.5
---	------

Ice Osmun Pine**28.5 Acres**

0 0.15 0.3 0.6 Miles

**Legend**

- Against State (Red)
- Forest Access Route
- Administrative Access Only
- Government Gravel/Dirt
- Lakes
- Intermittent Stream
- Perennial River

Use QR Code to
open Map in App