



**DEPARTMENT OF NATURAL RESOURCES
STATE OF MICHIGAN
TIMBER SALE PROSPECTUS #7571**

SCHEDULED SALE DATE AND TIME: 10:00 a.m. (local time) on July 29, 2025.

LOCATION: ATLANTA MGMT UNIT, 13501 M 33, ATLANTA, MI 49709.

PROSPECTUS NOTE: The sales on this Prospectus have received damage from the Ice Storm in late March 2025. The Purchaser should harvest the wood as soon as possible.

The bidder is advised to inspect the sale area and review the location, estimated volumes, operating costs and contract terms of proposed sales. Please be aware that some landowners may request 60 days or more notice for access across their land.

Notice is hereby given that bids will be received by the Unit Manager, ATLANTA MANAGEMENT UNIT, for certain timber on the following described lands:

Ice Millersburg Rd JP Salvage (54-020-25) / T32N, R02E, SEC. 14, NW.

T32N, R02E, SEC. 15, N1/2SW.

T32N, R02E, SEC. 22, SENW,NENE,S1/2NE,E1/2SW,N1/2SE.

T32N, R02E, SEC. 27, NENW,NWNE.

T32N, R02E, SEC. 4 , SWSE.

T32N, R02E, SEC. 9 , N1/2NE,SWNE.

Montmorency County, Advertised Price \$16,841.35, 242.7 Acres, Jack Pine, Red Pine.

SALE NOTE: The Sale Area has received damage from Ice Storm in late March 2025. The Purchaser should harvest the wood as soon as possible. This sale is adjacent to a young jack pine stand which may be used by the Kirtland's Warbler. See Sale Spec 5.8.1 for restrictions. 2 year contract that expires 6/30/27. There will be no extensions granted on this contract.

A recreation site such as a trail, pathway, or campground is within the sale area or the vicinity. Certain restrictions/specifications may be applicable including time restrictions.

Ice and Dice Aspen Salvage (54-021-25) / T30N, R01E, SEC. 33, SENW,S1/2NE,N1/2SE.

T30N, R01E, SEC. 34, S1/2NE,W1/2SW,NESE.

Montmorency County, Advertised Price \$35,630.05, 105.0 Acres, Aspen, Hardwood.

SALE NOTE: This sale was affected by the March 2025 Ice Storm resulting in heavy damage to canopy Aspen, Mixed Hardwood and Jack Pine. The sale was cruised using standard methods, then reduced to reflect the current condition of the stand.

A recreation site such as a trail, pathway, or campground is within the sale area or the vicinity. Certain restrictions/specifications may be applicable including time restrictions.

SALE NOTE: Extensive road work is required on this sale. The advertised price has been reduced by the estimate cost of this road work to off-set the additional expense.-Road work is required prior to hauling. Refer to timber sale spec 4.1.8 for details.

-Equipment is recommended. Refer to timber sale spec 5.2.16 for details.

-There is an operating caution. Refer to timber sale spec 5.2.22.1 for details.

-This is an ice storm damaged salvage sale. Refer to timber sale specs 2.1. 11, 7.2.2, 7.2.3, and 7.5.1 for details.

-Hauling is restricted during the December 1 to March 31 snowmobile season. Refer to timber sale spec 5.2.3.1 for details.

-Any questions related to this ice storm damage salvage sale can be directed to MI DNR Forester Dale Parris at (989) 590-1204 or parrisd2@michigan.gov.

A recreation site such as a trail, pathway, or campground is within the sale area or the vicinity. Certain restrictions/specifications may be applicable including time restrictions.

BID INSTRUCTIONS (VER. 10/10/2022):

1. Scheduled Bid Location, Date, and Time (2/11)

Bids must be received by the Unit Manager, ATLANTA OFFICE, 13501 M 33, ATLANTA, MI 49709, no later than 10:00 a.m. (local time) on July 29, 2025. For further information concerning this sale, contact Matt Foster at 989-619-5921 extension .

2. Bidder's Qualifications (10/22)

If all or part of a timber sale was prepared by a private contractor, the contractor and that contractor's company are not permitted to bid on the timber sale. A person must be 18 years of age or older to purchase timber. Permanent employees of the Department of Natural Resources or members of their immediate household may not bid. Former employees, in the permanent or seasonal class, may not bid until 3 months after the last day of active duty. Bids will not be accepted from individuals or companies appearing on the DNR/FRD No-Bid List. This list contains the names of purchasers who previously failed to execute a contract within 21-days or who have a history of poor performance.

3. Preparation of Sealed Bids (5/16)

Bid Forms may be completed online thru Michigan DNR Timber Sale Online Bidding (OLB) at www.michigan.gov/timberbidding or by completing the hardcopy Bid Form found in the Timber Sale Prospectus . Hardcopy Bid Forms shall be manually signed in ink. Registration in OLB is considered your 'signature' for all bids submitted thru that system. Bid prices must be entered for each species and product in the Bid Price column for all material subject to bidding and all fill-in blanks must be completed. If erasures or other changes appear on the hardcopy Bid Form, each erasure or change must be initialed by the person signing the bid.

4. Submission of Sealed Bids (5/16)

Bid forms may be obtained from the Unit Manager or thru OLB. Bids may be submitted hardcopy or thru OLB. All hardcopy bids must be submitted on the bid form and in an envelope clearly identified as described in this section. NOTE: Only one bid form per bid envelope. Sealed bids must be submitted to the Unit office designated in the prospectus and must be submitted at or prior to the time established in the prospectus. The envelope should show on the outside (a) the sale name or number and (b) the date and time of bid opening, as shown in the prospectus. Bids received after the time specified in the sale prospectus are late bids and will be rejected.

It is possible for a bidder to submit multiple bids on a single sale. For example, a bid may be submitted hardcopy and a bid may be submitted thru OLB. Or, two bidders from the same company could both submit bids on the same sale. If this were to happen, the State would accept all bids received and award the contract accordingly. All bidding and contractual requirements would apply to all bids received.

5. Public Opening of Sealed Bids (7/16)

If conditions permit, the sealed bids will be publicly opened and posted at the time and place set in the prospectus.

If a bidder, present at a bid opening, has submitted bids on more than one sale, that bidder may withdraw their unopened bid envelopes or announce the withdrawal of their online bid after being declared the successful bidder on one sale.

6. Award of Contract (1/11)

Award of the contract will be made to the Bidder whose bid, conforming to the prospectus, is most advantageous to the State of Michigan on the basis of total value at rates bid for the estimated quantities. The State reserves the right to reject any bid or waive any minor irregularity in bids received. A written award mailed (or otherwise furnished) to the successful Bidder shall be deemed to result in a binding contract without further action by either party.

7. Down Payment (1/11)

The Bidder to whom award is made must make a down payment within 21 days of the sale award. The amount of the down payment will be calculated as shown in the Bond and Payment Schedule of this prospectus. Only cash may be used to meet this requirement.

8. Performance Security (1/11)

As guarantee of faithful performance, a cash bond, certificate of deposit, surety bond or irrevocable letter of credit (LOC) is required within 21 days of the sale award. The amount of the performance security is shown in the Bond and

Payment Schedule of this prospectus. If an LOC or surety is used, the coverage must extend for at least 6 months beyond the contract expiration.

9. Worker's Compensation (10/22)

Purchaser shall obtain worker's compensation insurance to cover claims under Michigan's Worker's Disability Compensation Act of 1969 or similar employee benefit act of any other state applicable to an employee. Verification of Worker's Disability Compensation Act Compliance must be completed and submitted within 21 days of contract award and prior to the issuance of the timber sale contract. In addition, if applicable, Notice of Exclusion or Certificate of Insurance must also be submitted.

10. Timber Sale Contract (10/22)

Additional conditions and requirements common to all timber sales are listed on the timber sale contract (R4031) and are available on line at www.michigan.gov/timber. Contact the Unit Manager for additional information or a sample contract. Within 21 days of the date of the award letter, the bidder must sign the contract and provide the required down payment, performance security, and verification of worker's disability compensation. The down payment and performance security shall be in accordance with the provisions of the timber sale contract, in the sums stated in this prospectus. If these actions are not taken, then the Bidder, the Bidder's corporation, and the corporation's principals may not be permitted to bid on State timber sales for a period of 3 months after the first offense, 6 months after the second offense, and 1 year after the third offense. An offense will only be counted against the Bidder for 5 years. In addition, the Bidder certifies that if awarded this contract, the Bidder will complete the timber sale contract in accordance with its terms and any modifications thereof including requirements to purchase, cut, and remove the included timber by the expiration date.

Payment Unit values in the State Forest Timber Sale Contract are calculated based on the advertised value of the Payment Unit as a percentage of the total advertised value of the contract. The advertised value of each Payment Unit is given in the Description of Timber by Payment Unit table on the Timber Sale Information page. For example, if the value of Payment Unit 1 is advertised as \$1,500 and the total Timber Sale value is advertised as \$10,000, the contract price for Payment Unit 1 will be 15% of the total bid price ($\$1,500/\$10,000 * 100$).

11. Disclaimer of Estimates and Bidder's Warranty of Inspection (10/22)

Before submitting this bid, the Bidder is advised and cautioned to inspect the sale area, review the requirements of the sale contract, and take other steps as may be reasonably necessary to ascertain the location, estimated volumes, construction estimates, and operating costs of the proposed sale. Failure to do so will not relieve the Bidder from responsibility for completing the contract.

The Bidder warrants that this bid is submitted solely on the basis of the Bidder's examination and inspection of the quality and quantity of the timber offered for sale and the Bidder's opinion of the value thereof and the costs of recovery. No reliance should be placed on the State of Michigan's estimates of timber quality, quantity or costs of recovery. Bidder further acknowledges that the State of Michigan: (i) expressly disclaims any warranty of fitness of timber for any purpose; (ii) offers this timber as is without any warranty of quality (merchantability) or quantity and (iii) expressly disclaims any warranty as to the quantity or quality of timber sold.

12. Certification and Chain-of-Custody (10/22)

Unless otherwise indicated in the contract under section 7 – Other Conditions of the Sale Specific Conditions & Requirements, the area encompassed by this timber sale is certified to the standards of the Forest Stewardship Council (FSC) - Certificate #SCS-FM/COC-00090N and the Sustainable Forestry Initiative (SFI) - Certificate #NSF-SFIS-5Y031-SF5. Forest products from this sale may be delivered to the mill as "FSC 100% and / or SFI certified" as long as the contractor hauling the forest products is chain-of-custody (COC) certified or covered under a COC certificate from the destination mill. The purchaser is responsible for maintaining COC after leaving the sale area.

13. Good Neighbor Authority (GNA) Requirements (10/22)

If the name of this timber sales contains the acronym GNA, it is authorized by the Good Neighbor Authority (GNA) and covered by various agreements between the U.S. Forest Service and the State. The timber sale occurs on federal land and the following conditions apply:

GNA contracts on US Forest Service land will not be awarded to purchasers on the Federal list of excluded parties. The System for Award Management (SAM) will be checked for active excluded parties prior to award of contract. In

addition, the Bidder to whom award is made must complete an Assurance Regarding Felony Conviction or Tax Delinquent Status for Corporate Applicants (AD-3031).

14. Good Neighbor Authority (GNA) Requirements, con't (10/22)

Bidder certifies, by signing this bid form, that to the best of Bidder's knowledge that the following representations are accurate and complete.

- a. That the Bidder and its principals are not presently debarred, suspended, proposed for debarment, declared ineligible, or voluntary excluded from timber sales (covered transactions) by any Federal department or agency.
- b. That the Bidder and its principals have not within a 3-year period preceding this bid been convicted of or had a civil judgment rendered against them for commission of fraud or a criminal offense in connection with obtaining , attempting to obtain, or performing a public (Federal, State, or local) transaction or contract under a public transaction; violation of Federal or State antitrust statutes or commission of embezzlement, theft, forgery, bribery, falsification or destruction of records, making false statements, or receiving stolen property.
- c. That the Bidder and its principals are not presently indicted for or otherwise criminally or civilly charged by a governmental entity (Federal, State, or local) with commission of any of the offenses enumerated in paragraph b of this certification.
- d. That the Bidder and its principals have not within a 3-year period preceding this bid had one or more public transactions (Federal, State, or local) terminated for breach or default of a timber or forest product contract.

Bidders that cannot certify this requirement, in whole or in part, shall submit an explanation with their bid.

Scott Bowen
Director

TIMBER SALE INFORMATION

Ice Millersburg Rd JP Salvage (54-020-25)

T32N, R02E, SEC. 14; T32N, R02E, SEC. 15; T32N, R02E, SEC. 22; T32N, R02E, SEC. 27; T32N, R02E, SEC. 4; T32N, R02E, SEC. 9.

SALE NOTE: The Sale Area has received damage from Ice Storm in late March 2025. The Purchaser should harvest the wood as soon as possible. This sale is adjacent to a young jack pine stand which may be used by the Kirtland's Warbler. See Sale Spec 5.8.1 for restrictions. 2 year contract that expires 6/30/27. There will be no extensions granted on this contract.

A recreation site such as a trail, pathway, or campground is within the sale area or the vicinity. Certain restrictions/specifications may be applicable including time restrictions.

A timber sale contract for this lump sum, sealed bid timber sale will be awarded to the responsible bidder offering the highest sealed bid price. All units of volume listed below were estimated using the Inventory Manager computer program and the new Michigan taper model. Bids must be at or above the following advertised price for each product and species:

<u>PRODUCTS & SPECIES</u>	<u>ESTIMATED UNITS*</u>	<u>ADVERTISED PRICE</u>
Sawtimber		
Red Pine	41.5 MBF	\$ 55.00 / MBF
Pulpwood		
B. T. Aspen	13 Cords	\$ 7.90 / Cord
Black Spruce	2 Cords	\$ 5.40 / Cord
Jack Pine	1,662 Cords	\$ 6.05 / Cord
Mixed Oak	110 Cords	\$ 9.70 / Cord
Quaking Aspen	137 Cords	\$ 7.90 / Cord
Red Maple	22 Cords	\$ 8.75 / Cord
Red Pine	85 Cords	\$ 20.90 / Cord
White Pine	21 Cords	\$ 12.95 / Cord

* The total volume is statistically estimated within plus (+) or minus (-) 10.35 percent. There are an estimated 2,152 cords on this timber sale, plus or minus 223 cords at the 95% confidence level. The estimated units are final and not subject to adjustment. Prospective bidders are urged to examine this timber and to make their own estimates of quantity and quality.

BOND AND PAYMENT SCHEDULE:

1. A bond in the amount of \$1,000.00 to insure faithful performance of the conditions of the contract will be deposited by the successful bidder within 21 days of the sale award.
2. Cutting in any sale or unit without the required advance payment would be considered a trespass.
3. Total payment must be paid in advance or according to the following schedule :
 - (a) Ten percent (10%) of the sale value must be paid within 21 days of the sale award.
 - (b) The 10% down payment will be credited towards the first unit cut.
 - (c) Payment for each of the following units must be made before cutting begins in that unit:

<u>PAYMENT UNIT NUMBER</u>	<u>PERCENT OF TOTAL SALE VALUE</u>
01	7.1%
02	3.0%
03	38.0%
04	2.6%
05	9.6%
06	11.0%
07	9.4%
08	11.1%
09	6.5%
10	1.7%

4. If no cutting takes place, the 10% down payment will not be refunded.
5. Operations on the contract issued will terminate on 12/31/2027.

SALE STATISTICS

Volumes were calculated in cubic feet using the Michigan taper model. Cubic foot volume includes all wood inside bark for the product indicated. For display purposes, cubic feet were converted to cords and MBF using a simple conversion factor, e.g. 79 cubic feet per cord and 185 cubic feet per MBF. The cubic foot volumes are precise; the cords and MBF volumes are not. Cubic foot volume cannot be directly converted to cords or boards with precision.

SALE VOLUMES

The total estimated sale volume may not equal the sum of the species/products due to the nature of statistical calculations associated with double sampling methodology.

VOLUME			STATISTICAL RANGE IN CORDS	
TOTAL CUBIC FEET	TOTAL CORDS	PERCENT ERROR	MINIMUM	MAXIMUM
170,023	2,152	10.35%	1,929	2,375

VDU VOLUMES

A VDU is a Volume Determination Unit. Volumes and their associated statistics are calculated at the VDU level and summarized to the sale level. There is often a one to one relationship between a VDU and a Payment Unit, but not always, depending on the cruise design. Refer to the VDU TO PAYMENT UNIT table.

	VOLUME			RANGE IN CORDS	
VDU	TOTAL CUBIC FEET	TOTAL CORDS	PERCENT ERROR	MINIMUM	MAXIMUM
11	13,780	174	25.59%	130	219
48	6,684	85	73.26%	23	147
51	18,239	231	30.55%	160	301
53	7,671	97	57.54%	41	153
56	10,746	136	68.39%	43	229
63	83,580	1,058	15.56%	893	1,223
65	5,519	70	23.36%	54	86
75	5,796	73	55.50%	33	114
87	2,430	31	37.19%	19	42
199	15,580	197	30.71%	137	258
TOTAL:	170,023	2,152		1,533	2,772

VDU TO PAYMENT UNIT

When a VDU is associated with more than one Payment Unit (PU), the VDU volumes are assigned to the PU based on acres of the VDU within the PU.

VDU	VDU ACRES	PU	PU ACRES
TOTAL:			

DESCRIPTION OF TIMBER BY PAYMENT UNIT (PU)

PU	MARKET GROUP	PRODUCT	QUANTITY	UNIT	ACRES	ADVERTISE PRICE
1	Jack Pine Mixed Oak <i>/Red (Hybrid) Oak</i>	Pulpwood	135 39 39	Cords Cords Cords	27.0	\$1,195.05
2	Jack Pine Mixed Oak <i>Northern Pin Oak</i> <i>Northern Pin Oak</i>	Pulpwood <i>Sawtimber</i> <i>Pulpwood</i>	57 16 2.4 11	Cords Cords <i>MBF</i> Cords	10.5	\$500.05
3	Jack Pine Mixed Oak <i>/Red (Hybrid) Oak</i>	Pulpwood	1,051 7 7	Cords Cords Cords	131.0	\$6,426.45
4	Jack Pine Mixed Oak <i>White Oak</i>	Pulpwood	68 2 2	Cords Cords Cords	5.9	\$430.80
5	Red Pine B. T. Aspen Jack Pine Mixed Oak <i>/Red (Hybrid) Oak</i> <i>White Oak</i> <i>/Red (Hybrid) Oak</i> <i>White Oak</i> Quaking Aspen Red Pine	Sawtimber Pulpwood <i>Sawtimber</i> <i>Pulpwood</i>	4.7 7 130 40 2.7 2.1 24 7 2 5	MBF Cords Cords Cords <i>MBF</i> <i>MBF</i> Cords Cords Cords Cords	21.7	\$1,608.60
6	Red Pine Red Pine	Sawtimber Pulpwood	13.5 53	MBF Cords	6.7	\$1,850.20
7	B. T. Aspen Black Spruce Jack Pine Red Maple Red Pine White Pine <i>White Pine</i>	Pulpwood	6 2 200 4 5 14 14	Cords Cords Cords Cords Cords Cords Cords	21.3	\$1,589.00
8	Red Pine Jack Pine Red Pine	Sawtimber Pulpwood	23.3 21 22	MBF Cords Cords	8.3	\$1,868.35
9	Mixed Oak <i>Red Oak</i> <i>Red Oak</i> Quaking Aspen Red Maple	Pulpwood <i>Sawtimber</i> <i>Pulpwood</i>	6 2.7 1 111 18	Cords <i>MBF</i> Cords Cords Cords	8.7	\$1,092.60
10	Quaking Aspen White Pine <i>White Pine</i> <i>White Pine</i>	Pulpwood <i>Sawtimber</i> <i>Pulpwood</i>	24 7 1.0 5	Cords Cords <i>MBF</i> Cords	1.6	\$280.25
TOTAL:			41.5	MBF		
TOTAL:			2,052	Cords		

Sale Specific Conditions & Requirements

Sale Name: Ice Millersburg Rd JP Salvage

Sale Number: 54-020-25 Seq#: 1

1 - Sale Area

1.2 - Boundaries

1.2.1 - Painted Boundaries (9/19)

The sale boundary and Payment Unit boundaries are marked and identified by red paint, roads, and cover type changes (see Timber Sale Map). Exterior sale boundary lines against state are marked with red paint, or designated by change in cover type. Retention patches are marked red paint; no harvesting activities may occur within these areas. Yellow painted trees designating an interior Payment Unit boundary are only to be cut when all surrounding Payment Units have been paid.

2 - Timber Specifications

2.1 - Included Timber

2.1.1 - Clearcut Unit(s) with Unmerchantable Trees (6/14)

Within Payment Unit(s) 1-5, 7, 9 and 10, cut all trees that are two (2) inches or more at DBH. Within Payment Unit 9 leave all white pine and red pine.

2.1.3 - Cut Tree Marked Unit(s) (12/08)

Within Payment Unit(s) 6 and 8, all red pine are designated for cutting when marked with orange paint above and below stump height, regardless of merchantability. All Jack pine are to be cut as well.

2.2 - Utilization

2.2.2 - Chipping Required (12/24)

Payment Units 1-5, and 7 must be chip harvested to meet Kirtland's warbler habitat requirements. The Purchaser has the option to produce sawlogs or pulpwood bolts, but the remaining portion of the trees must be chipped and hauled. Products may be produced as roundwood and forwarded to decking areas in final product length, but the tops must be left intact and skidded to the landing for chipping in order to minimize the amount of residual slash. If market conditions limit the practicality of chipping, tops and slash must be arranged in a way that will not inhibit future planting operations, as directed by the Sale Administrator. A chipping exemption can be obtained if proposed operations are determined to be suitable for planting by reforestation staff. This exemption must be granted in writing. The requirement to retain approximately 1/6 to 1/3 of treetops and limbs less than four (4) inches in diameter does not apply (G. C. & R. 2.2). This is because the site is being planted to meet Kirtland's warbler habitat requirements and does not require that slash be left.

2.2.3 - Stump Heights (12/24)

Stump heights within the Sale Area shall not exceed 6 inches for all trees. This is in order to facilitate planting operations.

4 - Transportation

4.1 - Construction

4.1.3 - Slash and Earthen Piles (8/04)

Piles or windrows of earth along roads and landings that have been widened or constructed shall be leveled. Slash from road maintenance or construction, including stumps, shall be dispersed throughout the sale.

4.1.4 - Timber Removed for Construction (3/23)

Trees cut or damaged in the process of pre-approved road, landing, or skid trail construction will be decked in an area separate from other Designated Timber and not removed until measured by the Sale Administrator. Payment will be made at contract prices or average prices, if not on the contract.

4.1.6 - Road Construction (4/24)

Construction of new roads or improvements of existing roads shall be done in such a way as to minimize the environmental and visual impacts. Merchantable trees shall be cut and utilized unless otherwise directed. Non-merchantable trees shall be severed and laid flat on the ground. Slash shall be scattered, not left in windrows, and kept a minimum of 10 feet back from the road edge. Stumps shall be set upright, not left on edge, and be moved at least 10 feet away from the road edge. Disturbed soil shall be feathered into the woods and not left in berms or windrows.

4.1.7 - Road Closure (10/11)

All new roads built into the sale must be blocked to vehicle traffic upon completion of the sale. Overgrown roads that are reopened shall be considered new roads. In general, this will require constructing a four (4') foot high berm of stumps and logs covered with earth. Stumps and brush must be placed along the remainder of the trail. These roads must be rendered impassable to cars and trucks. Temporary berms may be required if no sale activity occurs for 30 or more consecutive days. Contact the Sale Administrator for specific details of design and placement.

4.1.11 - Permits (2/12)

The Purchaser will secure any necessary highway permits that may be required.

5 - Operations

5.1 - Notification

5.1.1 - Pre-sale Conference (10/16)

A pre-sale conference on site between the Purchaser and Sale Administrator is required prior to beginning any operations to determine landing and road locations. The Unit Manager or his/her representative must be contacted at least 5 days in advance to schedule the conference.

5.1.4 - Post-Sale Conference (10/16)

A post-sale conference on site between the Purchaser and sale administrator is required 5 days prior to the completion of active logging operations to determine clean-up and repair of landings, road edges, and the fulfillment of other contract specifications.

5.2 - Conduct of Operations

5.2.4 - Dead and Down Creation

5.2.4.4 - Dead and Down Creation, Grouse (6/18)

To encourage grouse and other wildlife, in Payment Unit(s) 9 and 10 leave one 12" or larger diameter (or largest diameter trees within stand) whole tree on the ground for every two (2) acres, preferably a hardwood species such as oak or maple or if no hardwoods are present, a pine species (white or red). These trees are to be evenly scattered throughout the Payment Unit, preferably at least two chains from any roads, two-tracks, or trails open to vehicles.

5.2.32 - Decking/Landing Restoration (9/13)

All decking and landing areas must have the surface area restored to a condition equal to or better than before. This is to ensure the proper regeneration of the stand. Wood debris, chips and "cookies" from trimmings must be removed or scattered away from landing and loading areas and may not be windrowed on the edge.

5.2.38 - No Decking Against Live Trees (2/04)

Cut products may not be decked against unmarked or designated leave trees.

5.2.39 - ORV Trail/Route Protection (4/18)

The MCCCT Motorcycle Trail is present in PU # 5, 7, and 8. It is in the near vicinity of PU # 4, 6, and 9 as shown on the Timber Sale Map. The Atlanta Route is in the near vicinity of PU # 4, 5, and 1 as shown on the Timber Sale Map. Do not cut trees or damage posts with yellow ORV markers. Trees with yellow ORV markers shall be cut off above the markers and at least five (5) feet above ground. All stumps within 5 feet of the trail must be cut flush with the ground. Maintain a 20-foot-wide slash, debris, and rut free zone daily using the ORV trail or route as the centerline. Do not run equipment down the ORV trail or route. Skidding across the trail or route may only occur in 1 or 2 locations per Payment Unit approved by the Sale Administrator.

5.2.40 - Pathway Protection (10/10)

The High Country Pathway is a hiking trail present in Payment Units # 4, 5, 6, 7, 8, and 9 and is shown on the Timber Sale Map. Do not cut trees or damage posts with blue pathway markers. Maintain a 20-foot-wide slash, debris, and rut free zone daily, using the pathway as the centerline. Do not run equipment down the pathway. Skidding across the trail may only occur in 1 or 2 locations per Payment Unit approved by the Sale Administrator.

5.2.41 - Snowmobile Trail Protection (9/11)

The LP 492 is a snowmobile trail in the near vicinity of PU # 1 and is shown on the Timber Sale Map. The LP 9 is a snowmobile trail in the near vicinity of PU # 4 and 5 as shown on the Timber Sale Map. Do not cut or damage posts with

orange trail markers or traffic control signs. If the trail is used, it must be maintained and restored to a condition equal to or better than before the sale. The road maintenance/restoration must be done prior to December 1. If the trail is used for hauling, it must be graded to the satisfaction of the Unit Manager or his/her representative prior to December 1. If the trail road is to be used for hauling during the snowmobile season, then a snow-covered base must be left on the trail. The snowmobile trail may only be crossed at right angles. Maintain a 20-foot-wide slash, debris, and rut free zone daily using the snowmobile trail as the centerline. No decking of forest products will be permitted along the snowmobile trail. All stumps within 20 feet of the snowmobile trail must be cut at ground level.

5.8 - Protection of Endangered Species

5.8.1 - Kirtland's Warbler (1) (4/24)

This sale is adjacent to a young jack pine stand which may be used by the Kirtland's Warbler. The Department reserves the right to temporarily restrict all harvesting operations in a buffer zone of up to 500 feet if it is determined that Warbler territory has been established in the adjacent stand. The restricted period, if put into effect, would apply from May 1 to August 15. The 500 ft buffer is shown for Payment Units # 3, 5, 6, 8, and 9 in the Timber Sale Map. No harvesting may occur in Payment Units # 2 and 4 during this time period.

6 - Safety and Fire Prevention

6.2 - Signing

6.2.2 - Snowmobile Trail Posting (10/20)

The Purchaser is responsible for posting and maintaining caution signs on snowmobile trail LP 492 and LP 9 prior to beginning operations during the snowmobile season (approximately December 1 to March 31). The trail must be posted at locations designated on the Timber Sale Map at appropriate distances from the Sale Area approximately 350 feet from the Sale Area to warn of logging activity and truck traffic. Signs must be removed when harvest operations are suspended or completed. The Purchaser will provide these signs.

6.2.3 - Recreational Trail Posting (10/20)

The Purchaser is responsible for posting and maintaining caution signs on MCCCT Motorcycle Trail, High Country Pathway, and Atlanta Route prior to beginning operations. The trail must be posted at appropriate distances from the Sale Area to warn of logging activity and truck traffic at both ends of the trail. Signs must be removed when harvest operations are suspended or completed. The Purchaser will provide these signs.

7 - Other Conditions

7.2 - Extensions

7.2.2 - No Extensions (3/09)

There will be no extensions granted on this contract. The purpose of this sale is to create habitat for the endangered Kirtland's Warbler.

7.2.3 - Salvage Extension (6/13)

This is a salvage sale with a short contract length. The sale must be harvested promptly. One (1), twelve (12) month extension can be applied to one (1) other State Forest Timber Sale Contract owned by the purchaser or owned by one (1) designated sub-contractor of the Purchaser that works this contract. To qualify, the contract expiration date of the contract to be extended must be within twelve (12) months from the issue date of this contract. If this is the first extension on the other State Forest Timber Sale Contract, then the 5% extension fee will be waived. If this is an additional extension, the 10% fee will be reduced to 5%. The salvage extension must be used before this contract is closed-out. This specification does not alleviate the purchaser from any contractual obligations of the extended State Forest Timber Sale Contract. Per General Condition & Requirement 7.2, extensions are at the sole discretion of the DNR.

7.5 - Loss

7.5.1 - Deteriorating Timber (7/09)

The Sale Area has received damage from Ice Storm in late March 2025. The Purchaser should harvest the wood as soon as possible. The Department of Natural Resources is held free of responsibility of any further damage or deterioration due to delay in harvesting.



TIMBER SALE MAP

This information provided by authority of Part 525, 1994 PA 451, as amended.

Sale Number
54-020-25

Date
06/27/2025

Forest Management Unit		County	Mapped By: Bryce Neff		Scale 1:6,000	Page 1	Of 4
Atlanta Mgt Unit		Montmorency	Cruised By: Bryce Neff				
Township 32N	Range 02E	Section(s) and Subdivision(s)	Sec. 4 SWSE; Sec. 9 N1/2NE,SWNE; Sec. 14 NW; Sec. 15 N1/2SW; Sec. 22 SENW,NENE,S1/2NE,E1/2SW,N1/2SE; Sec. 27 NENW,NWNE				

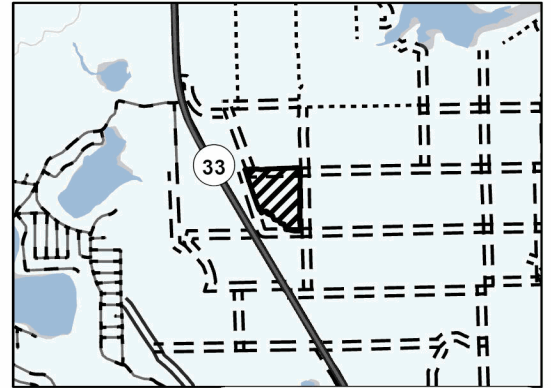
Cover Type

A = Aspen	J = Jack Pine	O = Oak	U = Upland Brush
B = Paper Birch	K = Rock	P = Lowland Poplar	UM = Upland Mix Forest
C = Cedar	L = Lowland Brush	Q = Mixed Swamp Conifer	V = Bog or Marsh
D = Treed Bog	LM = Lowland Mix Forest	R = Red Pine	W = White Pine
E = Swamp Hardwoods	M = Maple, Beech, Birch	S = Black Spruce	X = Non Stocked
F = Spruce/Fir	MC = Mixed Conifer	T = Tamarack	Y = Sand
G = Grass	MD = Mixed Deciduous		Z = Water
H = Hemlock	N = Marsh		

Density

0 = Non Stocked	5 = Pole Timber Medium
1 = Seedling Sapling Poor	6 = Pole Timber Well
2 = Seedling Sapling Medium	7 = Saw Timber Poor
3 = Seedling Sapling Well	8 = Saw Timber Medium
4 = Pole Timber Poor	9 = Saw Timber Well

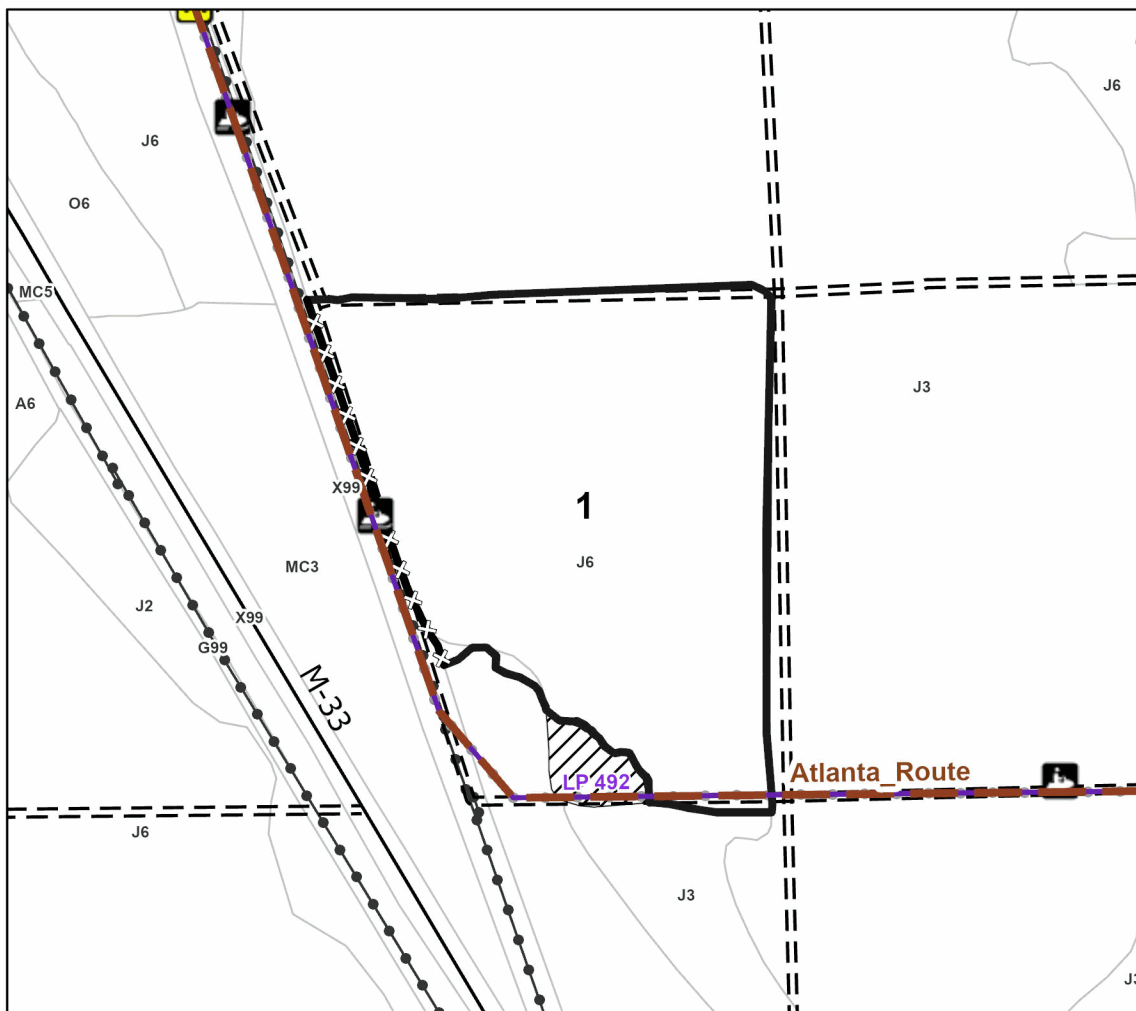
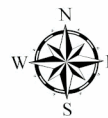
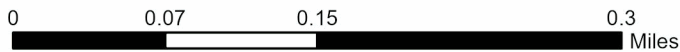
Locator Map 1:50,000



Payment Unit Number	Acres	Payment Unit Number	Acres
1	27	6	6.7
2	10.5	7	21.3
3	131	8	8.3
4	5.9	9	8.7
5	21.7	10	1.6

**Ice Millersburg Rd
JP Salvage**

242.7 Acres



Legend

- Payment Unit
- Against State (Red)
- Against State (Unpainted)
- Retention Areas
- Powerline
- Recreational Trails
- Forest Access Route
- Paved Road
- High Country Pathway
- ATV Trail
- ORV Route
- MCCCT
- Snowmobile

Use QR Code to
open Map in App





TIMBER SALE MAP

This information provided by authority of Part 525, 1994 PA 451, as amended.

Sale Number
54-020-25

Date
06/27/2025

Forest Management Unit		County	Mapped By: Bryce Neff	Scale	Page	Of
Atlanta Mgt Unit		Montmorency	Cruised By: Bryce Neff	1:6,000	2	4
Township 32N	Range 02E	Section(s) Sec. 4 SWSE; Sec. 9 N1/2NE,SWNE; Subdivision(s) Sec. 14 NW; Sec. 15 N1/2SW; Sec. 22 SENW,NENE,S1/2NE,E1/2SW,N1/2SE; Sec. 27 NENW,NWNE;				

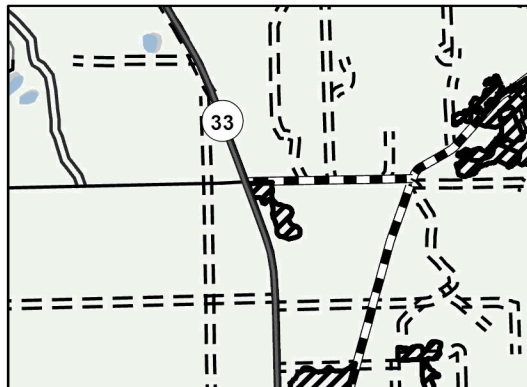
Cover Type

A = Aspen	J = Jack Pine	O = Oak	U = Upland Brush
B = Paper Birch	K = Rock	P = Lowland Poplar	UM = Upland Mix Forest
C = Cedar	L = Lowland Brush	Q = Mixed Swamp Conifer	V = Bog or Marsh
D = Treed Bog	LM = Lowland Mix Forest	R = Red Pine	W = White Pine
E = Swamp Hardwoods	M = Maple, Beech, Birch	S = Black Spruce	X = Non Stocked
F = Spruce/Fir	MC = Mixed Conifer	T = Tamarack	Y = Sand
G = Grass	MD = Mixed Deciduous		Z = Water
H = Hemlock	N = Marsh		

Density

0 = Non Stocked	5 = Pole Timber Medium
1 = Seedling Sapling Poor	6 = Pole Timber Well
2 = Seedling Sapling Medium	7 = Saw Timber Poor
3 = Seedling Sapling Well	8 = Saw Timber Medium
4 = Pole Timber Poor	9 = Saw Timber Well

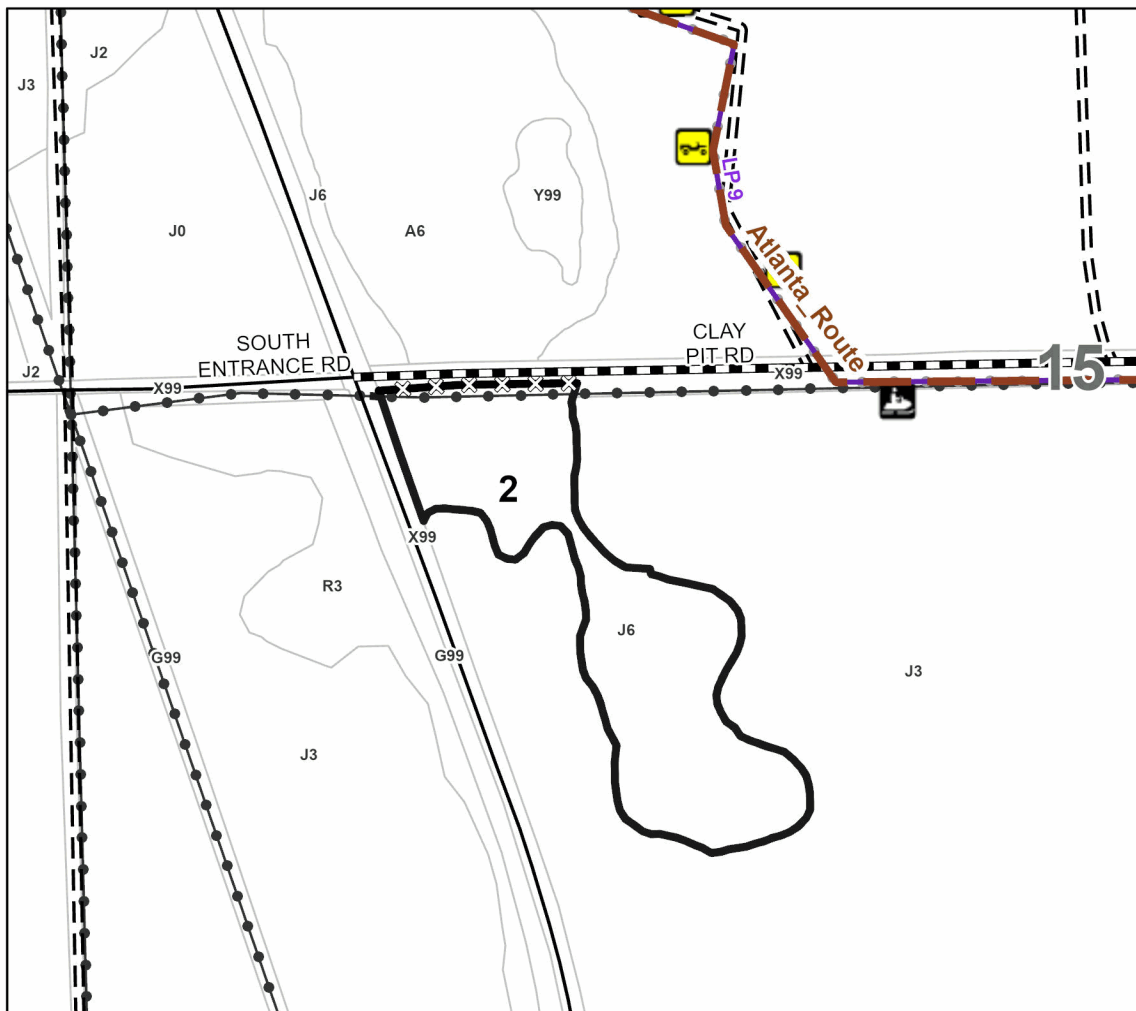
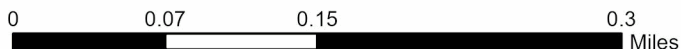
Locator Map 1:50,000



Payment Unit Number	Acres	Payment Unit Number	Acres
1	27	6	6.7
2	10.5	7	21.3
3	131	8	8.3
4	5.9	9	8.7
5	21.7	10	1.6

Ice Millersburg Rd JP Salvage

242.7 Acres



Legend

- Payment Unit
- Against State (Red)
- Against State (Unpainted)
- Powerline
- Recreational Trails
- Forest Access Route
- Paved Road
- Government Gravel/Dirt
- High Country Pathway
- ATV Trail
- ORV Route
- MCCCT
- Snowmobile

Use QR Code to
open Map in App



**TIMBER SALE MAP**

This information provided by authority of Part 525, 1994 PA 451, as amended.

Sale Number
54-20-25Date
06/27/2025

Forest Management Unit		County	Mapped By: Bryce Neff	Scale	Page	Of
Atlanta Mgt Unit		Montmorency	Cruised By: Bryce Neff	1:14,000	3	4
Township 32N	Range 02E	Section(s) Sec. 4 SWSE; Sec. 9 N1/2NE,SWNE; Subdivision(s) Sec. 14 NW; Sec. 15 N1/2SW; Sec. 22 SENW,NENE,S1/2NE,E1/2SW,N1/2SE; Sec. 27 NENW,NWNE;				

Cover Type

A = Aspen	J = Jack Pine	O = Oak	U = Upland Brush
B = Paper Birch	K = Rock	P = Lowland Poplar	UM = Upland Mix Forest
C = Cedar	L = Lowland Brush	Q = Mixed Swamp Conifer	V = Bog or Marsh
D = Treed Bog	LM = Lowland Mix Forest	R = Red Pine	W = White Pine
E = Swamp Hardwoods	M = Maple, Beech, Birch	S = Black Spruce	X = Non Stocked
F = Spruce/Fir	MC = Mixed Conifer	T = Tamarack	Y = Sand
G = Grass	MD = Mixed Deciduous	Z = Water	
H = Hemlock	N = Marsh		

Density

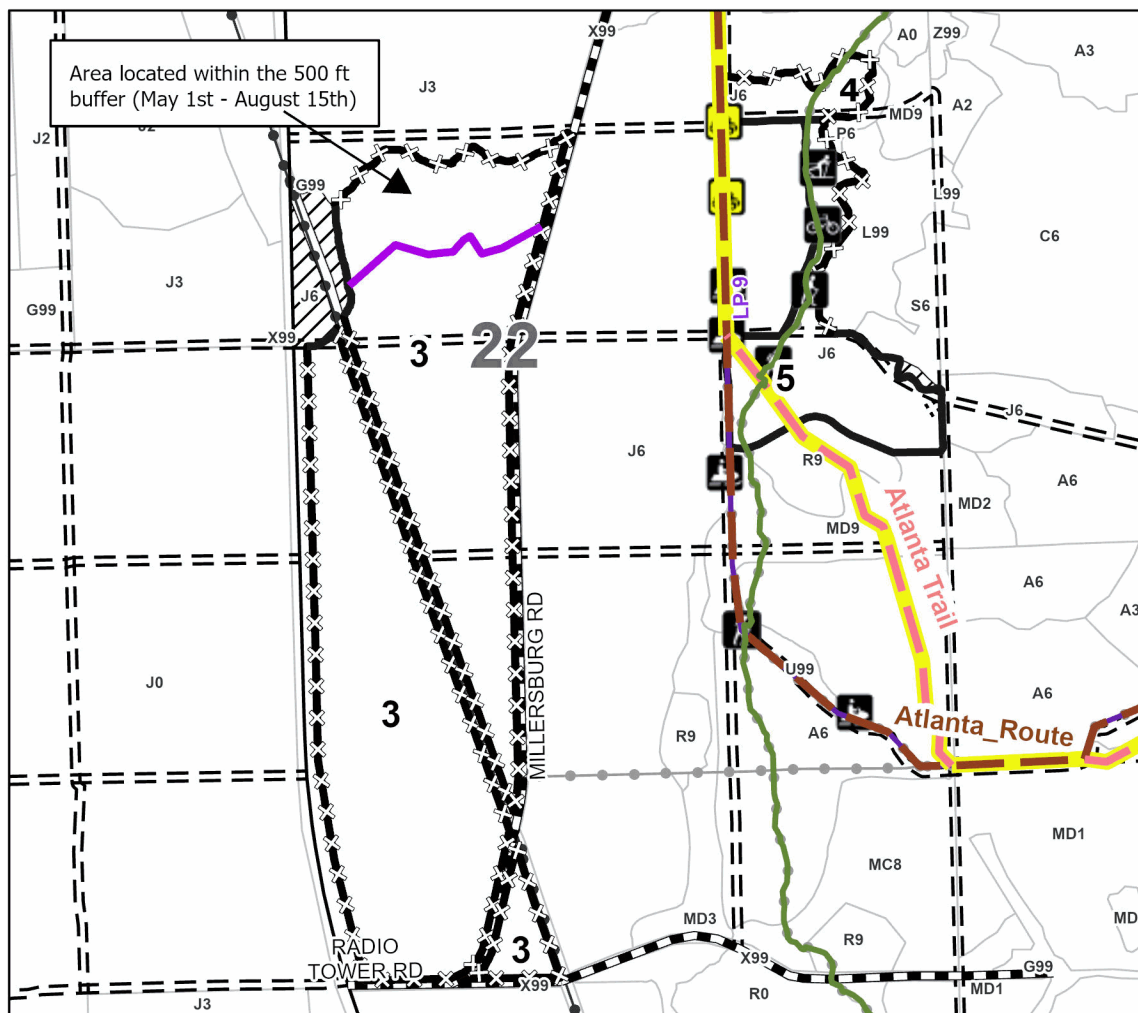
0 = Non Stocked	5 = Pole Timber Medium
1 = Seedling Sapling Poor	6 = Pole Timber Well
2 = Seedling Sapling Medium	7 = Saw Timber Poor
3 = Seedling Sapling Well	8 = Saw Timber Medium
4 = Pole Timber Poor	9 = Saw Timber Well

Locator Map 1:100,000

Payment Unit Number	Acres	Payment Unit Number	Acres
1	27	6	6.7
2	10.5	7	21.3
3	131	8	8.3
4	5.9	9	8.7
5	21.7	10	1.6

**Ice Millersburg Rd
JP Salvage****242.7 Acres**

0 0.13 0.25 0.5 Miles

**Legend**

- Payment Unit
- Against State (Red)
- Against State (Unpainted)
- Against State (Unpainted)
- Against State (Cover Type Change)
- Retention Areas
- Powerline
- Recreational Trails
- Forest Access Route
- Paved Road
- Government Gravel/Dirt
- High Country Pathway
- ATV Trail
- ORV Route
- MCCCT
- Snowmobile

Use QR Code to
open Map in App



TIMBER SALE MAP

This information provided by authority of Part 525, 1994 PA 451, as amended.

Sale Number
54-020-25

Date
06/27/2025

Forest Management Unit		County	Mapped By: Bryce Neff	Scale 1:6,000	Page 4	Of 4
Atlanta Mgt Unit		Montmorency	Cruised By: Bryce Neff			
Township 32N	Range 02E	Section(s) and Subdivision(s)	Sec. 4 SWSE; Sec. 9 N1/2NE,SWNE; Sec. 14 NW; Sec. 15 N1/2SW; Sec. 22 SENW,NENE,S1/2NE,E1/2SW,N1/2SE; Sec. 27 NENW,NWNE;			

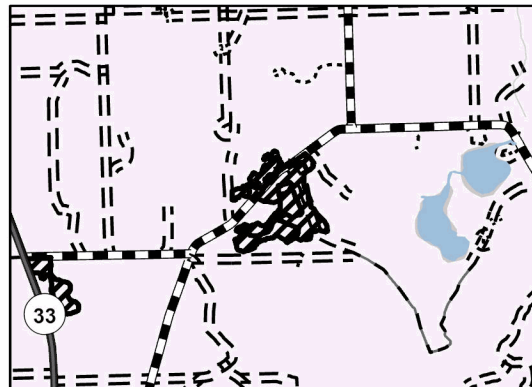
Cover Type

A = Aspen	J = Jack Pine	O = Oak	U = Upland Brush
B = Paper Birch	K = Rock	P = Lowland Poplar	UM = Upland Mix Forest
C = Cedar	L = Lowland Brush	Q = Mixed Swamp Conifer	V = Bog or Marsh
D = Treed Bog	LM = Lowland Mix Forest	R = Red Pine	W = White Pine
E = Swamp Hardwoods	M = Maple, Beech, Birch	S = Black Spruce	X = Non Stocked
F = Spruce/Fir	MC = Mixed Conifer	T = Tamarack	Y = Sand
G = Grass	MD = Mixed Deciduous	Z = Water	
H = Hemlock	N = Marsh		

Density

0 = Non Stocked	5 = Pole Timber Medium
1 = Seedling Sapling Poor	6 = Pole Timber Well
2 = Seedling Sapling Medium	7 = Saw Timber Poor
3 = Seedling Sapling Well	8 = Saw Timber Medium
4 = Pole Timber Poor	9 = Saw Timber Well

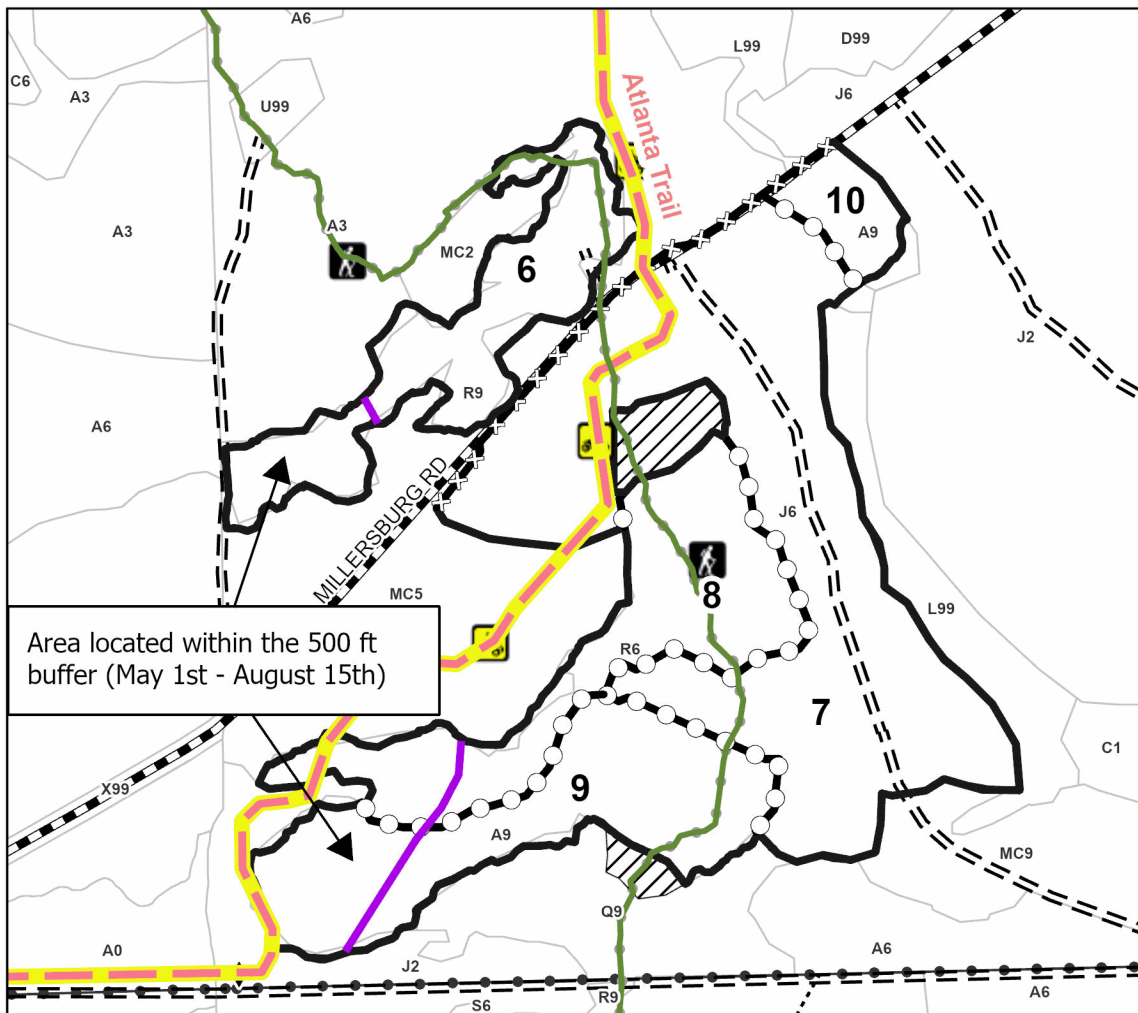
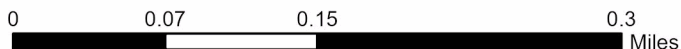
Locator Map 1:50,000



Payment Unit Number	Acres	Payment Unit Number	Acres
1	27	6	6.7
2	10.5	7	21.3
3	131	8	8.3
4	5.9	9	8.7
5	21.7	10	1.6

Ice Millersburg Rd JP Salvage

242.7 Acres



Legend

- Payment Unit
- Against State (Red)
- Against State (Unpainted)
- Against State (Unpainted)
- Payment Unit (Yellow)
- Powerline
- Recreational Trails
- Survey Grade Corner
- Forest Access Route
- Administrative Access Only
- Government Gravel/Dirt
- High Country Pathway
- ATV Trail
- ORV Route
- MCCCT
- Snowmobile

Use QR Code to open Map in App



TIMBER SALE INFORMATION

Ice and Dice Aspen Salvage (54-021-25)

T30N, R01E, SEC. 33; T30N, R01E, SEC. 34.

Montmorency County (Advertised Price \$35,630.05)

SALE NOTE: This sale was affected by the March 2025 Ice Storm resulting in heavy damage to canopy Aspen, Mixed Hardwood and Jack Pine. The sale was cruised using standard methods, then reduced to reflect the current condition of the stand.

A recreation site such as a trail, pathway, or campground is within the sale area or the vicinity. Certain restrictions/specifications may be applicable including time restrictions.

A timber sale contract for this lump sum, sealed bid timber sale will be awarded to the responsible bidder offering the highest sealed bid price. All units of volume listed below were estimated using the Inventory Manager computer program and the new Michigan taper model. Bids must be at or above the following advertised price for each product and species:

<u>PRODUCTS & SPECIES</u>	<u>ESTIMATED UNITS*</u>		<u>ADVERTISED PRICE</u>
Sawtimber			
Basswood	5.2	MBF	\$ 35.00 / MBF
Northern Pin Oak	22.6	MBF	\$ 61.00 / MBF
Red Maple	20.1	MBF	\$ 34.00 / MBF
Red Pine	3.4	MBF	\$ 78.00 / MBF
White Pine	7.1	MBF	\$ 51.00 / MBF
Pulpwood			
Basswood	5	Cords	\$ 11.75 / Cord
Jack Pine	101	Cords	\$ 8.65 / Cord
Mixed Aspen	2,126	Cords	\$ 11.30 / Cord
Mixed Hardwood	439	Cords	\$ 12.55 / Cord
Mixed Oak	104	Cords	\$ 13.85 / Cord
Red Pine	18	Cords	\$ 29.90 / Cord
White Pine	17	Cords	\$ 18.50 / Cord

* The total volume is statistically estimated within plus (+) or minus (-) 24.82 percent. There are an estimated 2,946 cords on this timber sale, plus or minus 731 cords at the 95% confidence level. The estimated units are final and not subject to adjustment. Prospective bidders are urged to examine this timber and to make their own estimates of quantity and quality.

BOND AND PAYMENT SCHEDULE:

1. A bond in the amount of \$1,782.00 to insure faithful performance of the conditions of the contract will be deposited by the successful bidder within 21 days of the sale award.
2. Cutting in any sale or unit without the required advance payment would be considered a trespass.
3. Total payment must be paid in advance or according to the following schedule:
 - (a) Ten percent (10%) of the sale value must be paid within 21 days of the sale award.
 - (b) The 10% down payment will be credited towards the first unit cut.
 - (c) Payment for each of the following units must be made before cutting begins in that unit:

<u>PAYMENT UNIT NUMBER</u>	<u>PERCENT OF TOTAL SALE VALUE</u>
01	61.1%
02	15.8%
03	9.9%
04	13.2%

4. If no cutting takes place, the 10% down payment will not be refunded.

5. Operations on the contract issued will terminate on 12/31/2027.

SALE STATISTICS

Volumes were calculated in cubic feet using the Michigan taper model. Cubic foot volume includes all wood inside bark for the product indicated. For display purposes, cubic feet were converted to cords and MBF using a simple conversion factor, e.g. 79 cubic feet per cord and 185 cubic feet per MBF. The cubic foot volumes are precise; the cords and MBF volumes are not. Cubic foot volume cannot be directly converted to cords or boards with precision.

SALE VOLUMES

The total estimated sale volume may not equal the sum of the species/products due to the nature of statistical calculations associated with double sampling methodology.

VOLUME			STATISTICAL RANGE IN CORDS	
TOTAL CUBIC FEET	TOTAL CORDS	PERCENT ERROR	MINIMUM	MAXIMUM
232,717	2,946	24.82%	2,215	3,677

VDU VOLUMES

A VDU is a Volume Determination Unit. Volumes and their associated statistics are calculated at the VDU level and summarized to the sale level. There is often a one to one relationship between a VDU and a Payment Unit, but not always, depending on the cruise design. Refer to the VDU TO PAYMENT UNIT table.

	VOLUME			RANGE IN CORDS	
VDU	TOTAL CUBIC FEET	TOTAL CORDS	PERCENT ERROR	MINIMUM	MAXIMUM
63	26,732	338	61.73%	129	547
66	6,245	79	56.16%	35	123
67	17,213	218	64.44%	77	358
84	38,714	490	52.72%	232	748
95	143,812	1,820	36.25%	1,161	2,480
TOTAL:	232,717	2,946		1,634	4,258

VDU TO PAYMENT UNIT

When a VDU is associated with more than one Payment Unit (PU), the VDU volumes are assigned to the PU based on acres of the VDU within the PU.

VDU	VDU ACRES	PU	PU ACRES
TOTAL:			

DESCRIPTION OF TIMBER BY PAYMENT UNIT (PU)

PU	MARKET GROUP	PRODUCT	QUANTITY	UNIT	ACRES	ADVERTISE PRICE	
1	Basswood	Sawtimber	5.2	MBF	41.2	\$21,780.00	
	Northern Pin Oak		18.5	MBF			
	Red Maple		14.6	MBF			
	Basswood	Pulpwood	5	Cords			
	Mixed Aspen		1,444	Cords			
	<i>B. T. Aspen</i>		1,245	Cords			
	<i>Quaking Aspen</i>		199	Cords			
	Mixed Hardwood		248	Cords			
	<i>Ironwood</i>		7	Cords			
	<i>Red Maple</i>		143	Cords			
	<i>Sugar Maple</i>		98	Cords			
	Mixed Oak		35	Cords			
	<i>/Red (Hybrid) Oak</i>		26	Cords			
	<i>Northern Pin Oak</i>		9	Cords			
2	Mixed Aspen	Pulpwood	422	Cords	19.1	\$5,622.00	
	<i>B. T. Aspen</i>		410	Cords			
	<i>Quaking Aspen</i>		12	Cords			
	Mixed Hardwood		68	Cords			
	<i>Red Maple</i>		58	Cords			
	<i>Sugar Maple</i>		10	Cords			
3	Northern Pin Oak	Sawtimber	0.3	MBF	29.4	\$3,523.35	
	Red Maple		0.4	MBF			
	Red Pine		0.2	MBF			
	White Pine	Pulpwood	0.5	MBF			
	Jack Pine		101	Cords			
	Mixed Aspen		110	Cords			
	<i>B. T. Aspen</i>		10	Cords			
	<i>Quaking Aspen</i>		100	Cords			
	Mixed Hardwood		98	Cords			
	<i>Red Maple</i>		98	Cords			
	Mixed Oak		4	Cords			
	<i>/Red (Hybrid) Oak</i>		<i>Sawtimber</i>	0.1			MBF
	<i>Northern Pin Oak</i>		<i>Pulpwood</i>	4			Cords
	Red Pine		1	Cords			
	White Pine		1	Cords			
	4		Northern Pin Oak	Sawtimber			3.8
Red Maple		5.1	MBF				
Red Pine		3.2	MBF				
White Pine		Pulpwood	6.6	MBF			
Mixed Aspen			150	Cords			
<i>B. T. Aspen</i>			90	Cords			
<i>Quaking Aspen</i>			60	Cords			
Mixed Hardwood			25	Cords			
<i>Red Maple</i>			25	Cords			
Mixed Oak			64	Cords			
<i>/Red (Hybrid) Oak</i>			<i>Sawtimber</i>	1.7	MBF		
<i>/Red (Hybrid) Oak</i>			<i>Pulpwood</i>	6	Cords		
<i>Northern Pin Oak</i>			55	Cords			
Red Pine			17	Cords			
White Pine			16	Cords			
TOTAL:			58.4	MBF			
TOTAL:			2,809	Cords			

Sale Specific Conditions & Requirements

Sale Name: Ice and Dice Aspen Salvage

Sale Number: 54-021-25 Seq#: 1

1 - Sale Area

1.2 - Boundaries

1.2.1 - Painted Boundaries (9/19)

The sale boundary and Payment Unit boundaries are marked and identified by red and yellow paint. The East boundary of Payment Unit 1 is un-painted and designated as C.R 491. The West boundary of Payment Unit 2 is un-painted and designated as Buttles Rd. Exterior sale boundary lines against state are marked with red paint. Interior Payment Unit boundaries are marked with yellow paint. Retention patches are marked with Red X's; no harvesting activities may occur within these areas. The painted boundary line trees are not Included Timber and are to be protected. Yellow painted trees designating an interior Payment Unit boundary are only to be cut when all surrounding Payment Units have been paid.

2 - Timber Specifications

2.1 - Included Timber

2.1.1 - Clearcut Unit(s) with Unmerchantable Trees (6/14)

Within Payment Unit(s) 1-4, cut all trees that are two (2) inches or more at DBH except:

-Within Payment Unit 1 do NOT cut White Pine, Red Pine, Hemlock or any GREEN painted trees.

-Within Payment Units 2-3, do NOT cut White Pine or Red Pine.

-Within Payment Unit 4, do NOT cut any GREEN painted trees.

Do not cut any unmerchantable (<4.5" DBH) sugar maple, fir, or white/red pine in accordance with spec 3.4.1

3 - Payments

3.3 - Pre-measured Sales

3.3.4 - Dividing Payment Units (7/14)

Payment Unit(s) 1 may be divided at the request of the Purchaser and upon approval of the Unit Manager. Dividing Payment Units is a contract modification which requires a Timber Sale Contract Amendment. There will be only one division per Payment Unit.

3.4 - Damaged Timber

3.4.1 - Damaged Timber (12/24)

General Condition and Requirement 3.4 Damaged Timber, defines liquidated damages for undesignated live merchantable trees which are cut or injured. In addition, extreme care should be taken to avoid damage to sub-merchantable Red/White Pine, Sugar Maple and Fir saplings.

Within Payment Units 1 and 2, if more than 50% of the Red/White pine, Sugar Maple, and Fir saplings (1/4" to 4.5" DBH) within a specified portion of the Sale Area are damaged, liquidated damages will be assessed at \$500 per acre for all acreage within that specified portion of the Sale Area that was damaged.

No damage is acceptable to undesignated live merchantable trees. Within the Sale Area, if more than 5 % of trees (> 4.5" DBH) within a specified area of the sale are damaged, liquidated damages will be assessed for all trees damaged. Rates will be in accordance with General Condition and Requirement 3.4 Damaged Timber.

4 - Transportation

4.1 - Construction

4.1.3 - Slash and Earthen Piles (8/04)

Piles or windrows of earth along roads and landings that have been widened or constructed shall be leveled. Slash from road maintenance or construction, including stumps, shall be dispersed throughout the sale.

4.1.11 - Permits (2/12)

The Purchaser will secure any necessary permits that may be required.

4.1.12 - No New Roads (1/12)

No new roads will be permitted in any Payment Unit. All operations are limited to existing roads. Only Skid trails and landings will be allowed.

4.2 - Maintenance

4.2.2 - Fill Material (4/07)

To maintain roads, fill material may be needed in areas where "holes" exist or may be expected to develop. This fill material should be placed before trucking begins. This will only be required for access to payment unit 1.

5 - Operations

5.1 - Notification

5.1.3 - Well Heads and Natural Gas Pipelines (11/15)

The Purchaser is responsible for contacting the gas or pipeline company 14 days prior to operating equipment in the vicinity of well heads or natural gas pipelines.

5.1.4 - Post-Sale Conference (10/16)

A post-sale conference on site between the Purchaser and sale administrator is required 5 days prior to the completion of active logging operations to determine clean-up and repair of landings, road edges, and the fulfillment of other contract specifications.

5.2 - Conduct of Operations

5.2.1 - Slash

5.2.1.8 - Slash Height (12/08)

No slash or tree tops may exceed 36 inches in height.

5.2.2 - Hazard Trees/Snags

5.2.2.1 - Den Trees (10/16)

Obvious hollow and/or den trees shall be protected and left standing unless they are a safety hazard.

5.2.4 - Dead and Down Creation

5.2.4.4 - Dead and Down Creation, Grouse (6/18)

To encourage grouse and other wildlife, in Payment Unit(s) 1-4 leave one 12" or larger diameter (or largest diameter trees within stand) whole tree on the ground for every two (2) acres, preferably a hardwood species such as oak or maple.

These trees will be evenly scattered throughout the Payment Unit, preferably at least two chains from any roads, two-tracks, or trails open to vehicles. This can be an unmerchantable piece or a full tree.

5.2.29 - Shrub Protection (1/20)

Do not cut or damage hawthorn, witch-hazel, dogwood or junberry. These woody-shrub plants are highly beneficial to various wildlife species.

5.2.32 - Decking/Landing Restoration (9/13)

All decking and landing areas must have the surface area restored to a condition equal to or better than before. This is to ensure the proper regeneration of the stand. Wood debris, chips and "cookies" from trimmings must be removed or scattered away from landing and loading areas and may not be windrowed on the edge.

5.2.38 - No Decking Against Live Trees (2/04)

Cut products may not be decked against unmarked or designated leave trees.

5.2.39 - ORV Trail/Route Protection (4/18)

The Big Bear ORV trail is adjacent to the sale area and is shown on the Timber Sale Map. Do not cut or damage posts with

yellow ORV markers. Trees with yellow ORV markers shall be cut off above the markers and at least five (5) feet above ground. Maintain a 20-foot-wide slash, debris, and rut free zone daily using the ORV trail or route as the centerline. Do not run equipment down the ORV trail.

5.4 - Soil Protection

5.4.5 - Soil Caution (11/04)

Payment Unit 1 contains pockets of saturated soils that were not excluded from the sale area. Within these areas, care must be taken to avoid excessive damage and rutting. The use of slash or top matting may be needed.

5.8 - Protection of Endangered Species

5.8.5 - Protection of Raptor Nests (3/13)

All trees with raptor nests will be protected if found during harvesting operations. Notification will be made to the Unit Manager or his/her representative who will notify the Wildlife Biologist so an onsite evaluation and recommendation can be made, if necessary.

6 - Safety and Fire Prevention

6.2 - Signing

6.2.1 - Road Posting (10/20)

The Purchaser is responsible for posting and maintaining caution signs on County Road 491 (Unit 1), Buttles Rd (Unit 2) or the two-track (Unit 3 and 4) depending on which active unit prior to beginning operations. The road must be posted at appropriate distances from the Sale Area to warn of logging activity and truck traffic. Signs must be removed when harvest operations are suspended or completed. The Purchaser will provide these signs.

6.2.3 - Recreational Trail Posting (10/20)

The Purchaser is responsible for posting and maintaining caution signs on the Big Bear ORV trail prior to beginning operations. The trail must be posted at appropriate distances from the Sale Area to warn of logging activity and truck traffic at both ends of the trail. Signs must be removed when harvest operations are suspended or completed. The Purchaser will provide these signs.

7 - Other Conditions

7.2 - Extensions

7.2.2 - No Extensions (3/09)

There will be no extensions granted on this contract. This is a salvage sale with deteriorating timber.

7.5 - Loss

7.5.1 - Deteriorating Timber (7/09)

The Sale Area has received damage from the March 2025 Ice storm. The Purchaser should harvest the wood as soon as possible. The Department of Natural Resources is held free of responsibility of any further damage or deterioration due to delay in harvesting.

TIMBER SALE MAP

This information provided by authority of Part 525, 1994 PA 451, as amended.

Sale Number

54-021-25

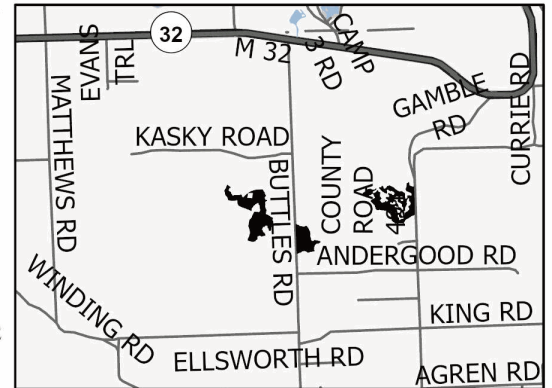
Date

07/01/2025

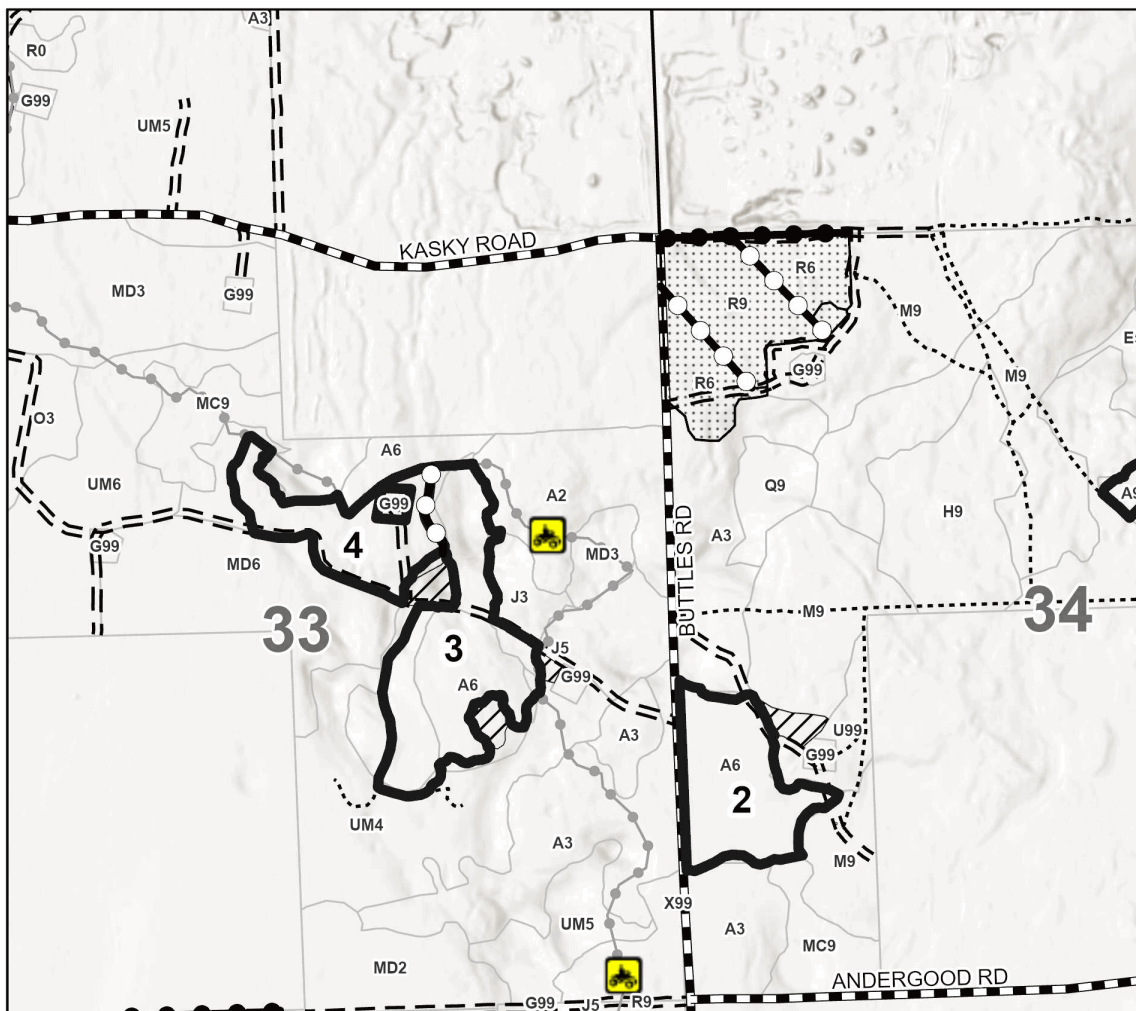
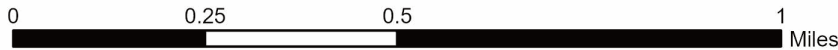
Management Unit	County	Mapped By: T.Kubitskey	Scale	Page	Of
Atlanta Mgt Unit	Montmorency	Cruised By: Kubitskey, Vaillencourt	1:15,840	1	2
Township 30N 01E	Section(s) and Subdivision(s) Sec. 33 SENW,S1/2NE,N1/2SE; Sec. 34 S1/2NE,W1/2SW,NESE;				

A = Aspen	J = Jack Pine	O = Oak	U = Upland Brush
B = Paper Birch	K = Rock	P = Lowland Poplar	UM = Upland Mix Forest
C = Cedar	L = Lowland Brush	Q = Mixed Swamp Conifer	V = Bog or Marsh
D = Treed Bog	LM = Lowland Mix Forest	R = Red Pine	W = White Pine
E = Swamp Hardwoods	M = Maple, Beech, Birch	S = Black Spruce	X = Non Stocked
F = Spruce/Fir	MC = Mixed Conifer	T = Tamarack	Y = Sand
G = Grass	MD = Mixed Deciduous	Z = Water	
H = Hemlock	N = Marsh		

0 = Non Stocked	5 = Pole Timber Medium
1 = Seedling Sapling Poor	6 = Pole Timber Well
2 = Seedling Sapling Medium	7 = Saw Timber Poor
3 = Seedling Sapling Well	8 = Saw Timber Medium
4 = Pole Timber Poor	9 = Saw Timber Well

Locator Map 1:100,000

Payment Unit Number	Acres
1	41.2
2	19.1
3	29.4
4	15.3

Ice and Dice Aspen Salvage**105.0 Acres****Legend**

- Against State (Red)
- Private Line (Blue)
- Payment Unit (Yellow)
- Recreational Trails
- Forest Access Route
- Administrative Access Only
- Paved Road
- Government Gravel/Dirt
- Retention Areas (Red X's)
- Nearby Timber Sale

Use QR Code to
open Map in App

**TIMBER SALE MAP**

This information provided by authority of Part 525, 1994 PA 451, as amended.

Sale Number

54-021-25

Date

07/01/2025

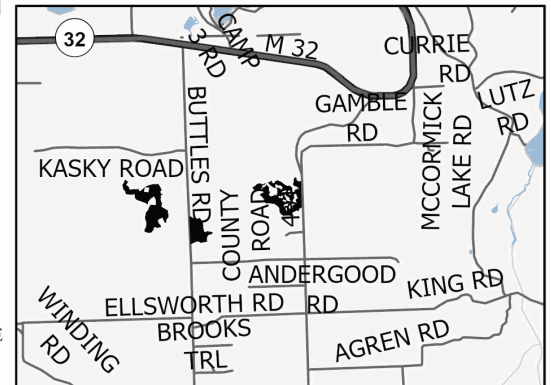
Forest Management Unit		County	Mapped By: T. Kubitskey	Scale 1:7,920	Page 2	Of 2
Atlanta Mgt Unit		Montmorency	Cruised By: Kubitskey, Vaillencourt			
Township 30N	Range 01E	Section(s) and Subdivision(s) Sec. 33 SENW,S1/2NE,N1/2SE; Sec. 34 S1/2NE,W1/2SW,NESE;				

Cover Type

A = Aspen	J = Jack Pine	O = Oak	U = Upland Brush
B = Paper Birch	K = Rock	P = Lowland Poplar	UM = Upland Mix Forest
C = Cedar	L = Lowland Brush	Q = Mixed Swamp Conifer	V = Bog or Marsh
D = Treed Bog	LM = Lowland Mix Forest	R = Red Pine	W = White Pine
E = Swamp Hardwoods	M = Maple, Beech, Birch	S = Black Spruce	X = Non Stocked
F = Spruce/Fir	MC = Mixed Conifer	T = Tamarack	Y = Sand
G = Grass	MD = Mixed Deciduous	Z = Water	
H = Hemlock	N = Marsh		

Density

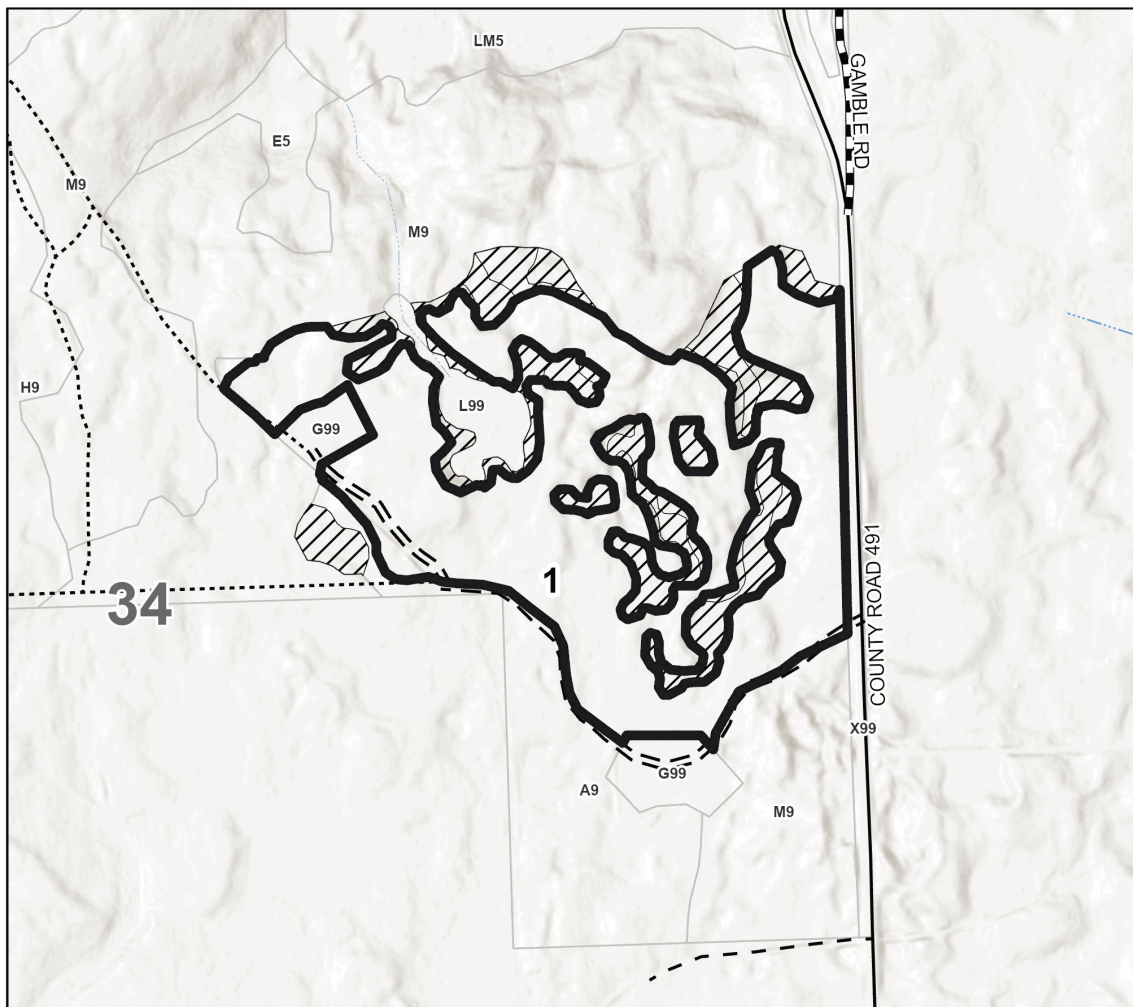
0 = Non Stocked	5 = Pole Timber Medium
1 = Seedling Sapling Poor	6 = Pole Timber Well
2 = Seedling Sapling Medium	7 = Saw Timber Poor
3 = Seedling Sapling Well	8 = Saw Timber Medium
4 = Pole Timber Poor	9 = Saw Timber Well

Locator Map 1:100,000

Payment Unit Number	Acres
1	41.2
2	19.1
3	29.4
4	15.3

Ice and Dice Aspen Salvage
105.0 Acres

0 0.13 0.25 0.5 Miles

**Legend**

- Against State (Red)
- Recreational Trails
- Forest Access Route
- Administrative Access Only
- Paved Road
- Government Gravel/Dirt
- Private Gravel/Dirt
- Retention Areas (Red X's)
- Nearby Timber Sale

Use QR Code to
open Map in App

TIMBER SALE INFORMATION

Ice C111 Lowland Aspen Salvage (54-023-25)

T32N, R06E, SEC. 14.

Alpena County (Advertised Price \$19,693.70)

SALE NOTE: Extensive road work is required on this sale. The advertised price has been reduced by the estimate cost of this road work to off-set the additional expense.-Road work is required prior to hauling. Refer to timber sale spec 4.1.8 for details.

-Equipment is recommended. Refer to timber sale spec 5.2.16 for details.

-There is an operating caution. Refer to timber sale spec 5.2.22.1 for details.

-This is an ice storm damaged salvage sale. Refer to timber sale specs 2.1. 11, 7.2.2, 7.2.3, and 7.5.1 for details.

-Hauling is restricted during the December 1 to March 31 snowmobile season. Refer to timber sale spec 5.2.3.1 for details.

-Any questions related to this ice storm damage salvage sale can be directed to MI DNR Forester Dale Parris at (989) 590-1204 or parrisd2@michigan.gov.

A recreation site such as a trail, pathway, or campground is within the sale area or the vicinity. Certain restrictions/specifications may be applicable including time restrictions.

A timber sale contract for this lump sum, sealed bid timber sale will be awarded to the responsible bidder offering the highest sealed bid price. All units of volume listed below were estimated using the Inventory Manager computer program and the new Michigan taper model. Bids must be at or above the following advertised price for each product and species:

<u>PRODUCTS & SPECIES</u>	<u>ESTIMATED UNITS*</u>	<u>ADVERTISED PRICE</u>
Pulpwood		
Balsam Fir	150 Cords	\$ 10.15 / Cord
Mixed Aspen	1,604 Cords	\$ 10.75 / Cord
Mixed Hardwood	31 Cords	\$ 11.90 / Cord
Red Maple	47 Cords	\$ 11.90 / Cord

* The total volume is statistically estimated within plus (+) or minus (-) 19.56 percent. There are an estimated 1,835 cords on this timber sale, plus or minus 359 cords at the 95% confidence level. The estimated units are final and not subject to adjustment. Prospective bidders are urged to examine this timber and to make their own estimates of quantity and quality.

BOND AND PAYMENT SCHEDULE:

1. A bond in the amount of \$2,000.00 to insure faithful performance of the conditions of the contract will be deposited by the successful bidder within 21 days of the sale award.
2. Cutting in any sale or unit without the required advance payment would be considered a trespass.
3. Total payment must be paid in advance or according to the following schedule :
 - (a) Ten percent (10%) of the sale value must be paid within 21 days of the sale award.
 - (b) The 10% down payment will be credited towards the first unit cut.
 - (c) Payment for each of the following units must be made before cutting begins in that unit:

<u>PAYMENT UNIT NUMBER</u>	<u>PERCENT OF TOTAL SALE VALUE</u>
01	47.3%
02	52.7%

4. If no cutting takes place, the 10% down payment will not be refunded.
5. Operations on the contract issued will terminate on 12/31/2027.

SALE STATISTICS

Volumes were calculated in cubic feet using the Michigan taper model. Cubic foot volume includes all wood inside bark for the product indicated. For display purposes, cubic feet were converted to cords and MBF using a simple conversion factor, e.g. 79 cubic feet per cord and 185 cubic feet per MBF. The cubic foot volumes are precise; the cords and MBF volumes are not. Cubic foot volume cannot be directly converted to cords or boards with precision.

SALE VOLUMES

The total estimated sale volume may not equal the sum of the species/products due to the nature of statistical calculations associated with double sampling methodology.

<u>VOLUME</u>		<u>STATISTICAL RANGE IN CORDS</u>		
<u>TOTAL CUBIC FEET</u>	<u>TOTAL CORDS</u>	<u>PERCENT ERROR</u>	<u>MINIMUM</u>	<u>MAXIMUM</u>
144,941	1,835	19.56%	1,476	2,194

VDU VOLUMES

A VDU is a Volume Determination Unit. Volumes and their associated statistics are calculated at the VDU level and summarized to the sale level. There is often a one to one relationship between a VDU and a Payment Unit, but not always, depending on the cruise design. Refer to the VDU TO PAYMENT UNIT table.

VDU	VOLUME		PERCENT ERROR	RANGE IN CORDS	
	TOTAL CUBIC FEET	TOTAL CORDS		MINIMUM	MAXIMUM
49	144,941	1,835	19.57%	1,476	2,194
TOTAL:	144,941	1,835		1,476	2,194

VDU TO PAYMENT UNIT

When a VDU is associated with more than one Payment Unit (PU), the VDU volumes are assigned to the PU based on acres of the VDU within the PU.

VDU	VDU ACRES	PU	PU ACRES
TOTAL:			

DESCRIPTION OF TIMBER BY PAYMENT UNIT (PU)

PU	MARKET GROUP	PRODUCT	QUANTITY	UNIT	ACRES	ADVERTISE PRICE
1	Balsam Fir	Pulpwood	71	Cords	36.1	\$9,308.30
	Balsam Fir	Sawtimber	4.0	MBF		
	Balsam Fir	Pulpwood	63	Cords		
	Mixed Aspen		759	Cords		
	Balsam Poplar		94	Cords		
	Quaking Aspen		665	Cords		
	Mixed Hardwood		14	Cords		
	Black Ash		4	Cords		
	Green Ash		8	Cords		
	Paper Birch		2	Cords		
	Red Maple		22	Cords		
	2	Balsam Fir	Pulpwood	79		
Balsam Fir		Sawtimber	4.4	MBF		
Balsam Fir		Pulpwood	70	Cords		
Mixed Aspen			845	Cords		
Balsam Poplar			105	Cords		
Quaking Aspen			740	Cords		
Mixed Hardwood			17	Cords		
Black Ash			5	Cords		
Green Ash			9	Cords		
Paper Birch			3	Cords		
Red Maple			25	Cords		
TOTAL:			1,832	Cords		

Sale Specific Conditions & Requirements

Sale Name: Ice C111 Lowland Aspen Salvage

Sale Number: 54-023-25 Seq#: 1

1 - Sale Area

1.2 - Boundaries

1.2.1 - Painted Boundaries (9/19)

The sale boundary and Payment Unit boundaries are marked and identified by red and yellow paint, and by forest road. Exterior sale boundary lines against state are marked with red paint. The northern boundary of Payment Unit 2 is marked by forest road. Interior Payment Unit boundaries are marked with yellow paint. The painted boundary line trees are not Included Timber and are to be protected. Yellow painted trees designating an interior Payment Unit boundary are only to be cut when all surrounding Payment Units have been paid.

2 - Timber Specifications

2.1 - Included Timber

2.1.1 - Clearcut Unit(s) with Unmerchantable Trees (6/14)

Within Payment Unit(s) 1 and 2, cut all trees that are two (2) inches or more at DBH, except those trees designated for leave as detailed in timber sale spec 5.2.4.7.

2.1.11 - Description of Timber Note (2/04)

Note that this is an ice storm salvage sale.

All timber standing, fallen, snapped, and/or broken timber is designated for harvest, except those trees designated for leave as detailed in timber sale spec 5.2.4.7.

This sale was cruised, and timber volumes estimated, using standard methods used by the Michigan DNR. Advertised prices were reduced accordingly, to reflect the current ice storm damaged condition of the stand.

3 - Payments

3.3 - Pre-measured Sales

3.3.4 - Dividing Payment Units (7/14)

Payment Unit(s) \$25,000 in value or greater may be divided at the request of the Purchaser and upon approval of the Unit Manager. Dividing Payment Units is a contract modification which requires a Timber Sale Contract Amendment. There will be only one division per Payment Unit.

4 - Transportation

4.1 - Construction

4.1.3 - Slash and Earthen Piles (8/04)

Piles or windrows of earth along roads and landings that have been widened or constructed shall be leveled. Slash from road maintenance or construction, including stumps, shall be dispersed throughout the sale.

4.1.6 - Road Construction (4/24)

Improvements of existing roads shall be done in such a way as to minimize the environmental and visual impacts. Merchantable trees shall be cut and utilized unless otherwise directed. Non-merchantable trees shall be severed and laid flat on the ground. Slash shall be scattered, not left in windrows, and kept a minimum of 10 feet back from the road edge. Stumps shall be set upright, not left on edge, and be moved at least 10 feet away from the road edge. Disturbed soil shall be feathered into the woods and not left in berms or windrows.

4.1.7 - Road Closure (10/11)

Reopened overgrown roads within the sale must be blocked to vehicle traffic upon completion of the sale. In general, this will require constructing a four (4') foot high berm of stumps and logs covered with earth. These roads must be rendered impassable to cars and trucks. All stumps from road building and landing construction must be reserved to block any newly constructed roads upon completion of the sale. Temporary berms may be required if no sale activity occurs for 30 or more

consecutive days. Contact the Sale Administrator for specific details of design and placement.

4.1.8 - Road Work (1) (8/07)

The following road work is required: Two holes exist in the forest road north of the sale area. Before hauling wood the producer is to place a total of 20 yards of 3 minus crushed limestone, 10 yards in each hole, to prevent further blowout.

4.1.12 - No New Roads (1/12)

No new roads will be permitted in any Payment Unit. All operations are limited to existing roads. Only Skid trails will be allowed.

5 - Operations

5.1 - Notification

5.1.1 - Pre-sale Conference (10/16)

A pre-sale conference on site between the Purchaser and Sale Administrator is required prior to beginning any operations within a Payment Unit to determine landing and road locations. The Unit Manager or his/her representative must be contacted at least 5 days in advance to schedule the conference.

5.1.4 - Post-Sale Conference (10/16)

A post-sale conference on site between the Purchaser and sale administrator is required 5 days prior to the completion of active logging operations to determine clean-up and repair of landings, road edges, and the fulfillment of other contract specifications.

5.2 - Conduct of Operations

5.2.2 - Hazard Trees/Snags

5.2.2.1 - Den Trees (10/16)

Obvious hollow and/or den trees shall be protected and left standing unless they are a safety hazard.

5.2.3 - Operating Restrictions

5.2.3.1 - Operating Restrictions (9/11)

Within Payment Unit(s) 1-2 unless, approved by the Unit Manager, hauling is not permitted from 5:00 p.m. Friday evening through 6:00 a.m. Monday morning during the December 1 to March 31 period. This restriction is due to the necessity of using the snowmobile trail for hauling wood from the sale.

5.2.3.11 - Coppice Regeneration Protection (4/10)

Timber harvesting in any Payment Unit must be completed before significant deciduous tree sprouting occurs in that Payment Unit, so as to minimize damage to the new regeneration. Any post-harvest operations, such as chipping, must be completed before sprouting of regeneration occurs. If it is anticipated that chipping will be delayed, then tops shall be carried to one central location or left unchipped. The Unit Manager or his/her representative may cease such operations if sprouting occurs before the operation is complete.

5.2.4 - Dead and Down Creation

5.2.4.7 - Dead and Down Creation: Hare, Grouse, Deer and Other Species (5/15)

To improve horizontal cover habitat for snowshoe hare, grouse, deer, and other species, the Purchaser is to push over one 10 inch DBH or greater tree for every 2 acres after all designated wood has been forwarded from a Payment Unit. A tree that has fallen on the ground as the result of ice storm damage can be left on the ground as an alternative to pushing over a standing tree. These trees should be tipped over with the root ball still attached so the base of the tree is suspended off the ground. The crown of the fallen tree should be at or near ground level after it is pushed over.

5.2.16 - Equipment Recommended (11/18)

It is recommended but not required that equipment be tracked or wheeled with tracks to prevent excessive rutting of lowland organic soils. Due to the crisscross nature of the ice storm damaged fallen timber, it would be beneficial for the producer to use a boomed dangle head processor for grabbing timber in an order necessary for processing.

5.2.22 - Operating Caution

5.2.22.1 - Operating Caution (6/11)

It is recommended, but not required, that within Payment Unit(s) 1-2, cutting, skidding, and hauling occur during dry summer or frozen winter conditions. The reason for the recommendation is because of the presence of lowland organic soils present within the sale area.

5.2.29 - Shrub Protection (1/20)

Do not cut or damage hawthorn, witch-hazel, dogwood or junberry. These woody-shrub plants are highly beneficial to various wildlife species.

5.2.32 - Decking/Landing Restoration (9/13)

All decking and landing areas must have the surface area restored to a condition equal to or better than before. This is to ensure the proper regeneration of the stand. Wood debris, chips and "cookies" from trimmings must be removed or scattered away from landing and loading areas and may not be windrowed on the edge.

5.2.38 - No Decking Against Live Trees (2/04)

Cut products may not be decked against unmarked or designated leave trees.

5.2.41 - Snowmobile Trail Protection (9/11)

LP 464 is a snowmobile trail and is shown on the Timber Sale Map. Do not cut or damage posts with orange trail markers or traffic control signs. If the trail is used, it must be maintained and restored to a condition equal to or better than before the sale. The road maintenance/restoration must be done prior to December 1. If the trail is used for hauling, it must be graded to the satisfaction of the Unit Manager or his/her representative prior to December 1. If the trail road is to be used for hauling during the snowmobile season, then a snow-covered base must be left on the trail. No decking of forest products will be permitted along the snowmobile trail. Any tree removal required along the snowmobile trail for hauling from the sale area will be handled per the direction of the Unit Manager or his/her representative. No decking of forest products will be permitted along the snowmobile trail.

5.4 - Soil Protection

5.4.1 - Rutting Restriction, General (7/16)

The Unit Manager or his/her representative may restrict hauling and/or skidding if ruts exceed the specified depth. With the Unit Manager or his/her representative's approval, the Purchaser may return to the area when the risk of rutting has decreased.

5.8 - Protection of Endangered Species

5.8.5 - Protection of Raptor Nests (3/13)

All trees with raptor nests will be protected if found during harvesting operations. Notification will be made to the Unit Manager or his/her representative who will notify the Wildlife Biologist so an onsite evaluation and recommendation can be made, if necessary.

6 - Safety and Fire Prevention

6.2 - Signing

6.2.1 - Road Posting (10/20)

The Purchaser is responsible for posting and maintaining caution signs on forest roads and Snowmobile Trail LP464 prior to beginning operations. The road must be posted at appropriate distances from the Sale Area to warn of logging activity and truck traffic. Signs must be removed when harvest operations are suspended or completed. The Purchaser will provide these signs.

7 - Other Conditions

7.2 - Extensions

7.2.2 - No Extensions (3/09)

There will be no extensions granted on this contract. Ice storm damaged timber must be processed and utilized in a timely manner for minimizing deterioration of wood product.

7.5 - Loss

7.5.1 - Deteriorating Timber (7/09)

The Sale Area has received damage from the late March 2025 Ice Storm. The Purchaser should harvest the wood as soon as

possible. The Department of Natural Resources is held free of responsibility of any further damage or deterioration due to delay in harvesting.



TIMBER SALE MAP

This information provided by authority of Part 525, 1994 PA 451, as amended.

Sale Number

54-023-25

Date

06/26/2025

Forest Management Unit

County

Mapped By: D. Parris

Scale

Page

Of

Atlanta Mgt Unit

Alpena

Cruised By: D. Parris

1:15,840

1

1

Township
32N

Range
06E

Section(s) and
Subdivision(s) Sec. 14 E1/2SW,SE;

Cover Type

A = Aspen	J = Jack Pine	O = Oak	U = Upland Brush
B = Paper Birch	K = Rock	P = Lowland Poplar	UM = Upland Mix Forest
C = Cedar	L = Lowland Brush	Q = Mixed Swamp Conifer	V = Bog or Marsh
D = Treed Bog	LM = Lowland Mix Forest	R = Red Pine	W = White Pine
E = Swamp Hardwoods	M = Maple, Beech, Birch	S = Black Spruce	X = Non Stocked
F = Spruce/Fir	MC = Mixed Conifer	T = Tamarack	Y = Sand
G = Grass	MD = Mixed Deciduous	Z = Water	
H = Hemlock	N = Marsh		

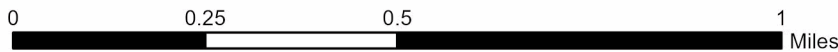
Density

0 = Non Stocked	5 = Pole Timber Medium
1 = Seedling Sapling Poor	6 = Pole Timber Well
2 = Seedling Sapling Medium	7 = Saw Timber Poor
3 = Seedling Sapling Well	8 = Saw Timber Medium
4 = Pole Timber Poor	9 = Saw Timber Well

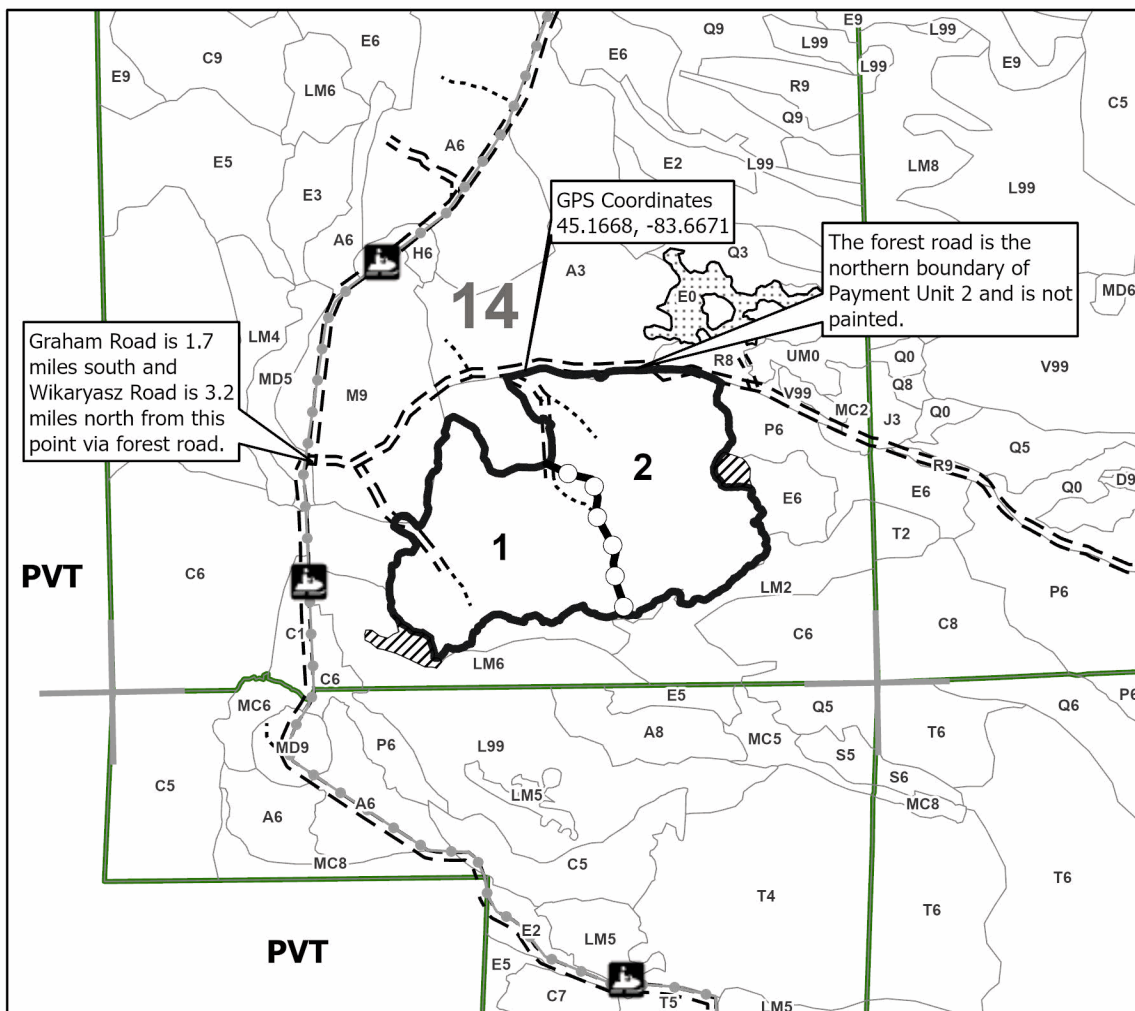
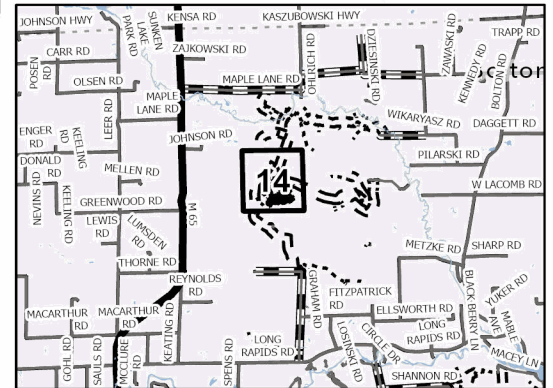
Payment Unit Number	Acres
1	36.1
2	40.2

**Ice C111
Lowland Aspen
Salvage**

76.3 Acres



Locator Map 1:200,000



Legend

- Payment Unit
- Against State (Red)
- Payment Unit (Yellow)
- Stand Boundaries
- Retention Area
- Nearby Timber Sale
- Forest Access Route
- Administrative Access Only
- Private Gravel/Dirt
- Recreational Trails
- Section Corners

Use QR Code to
open Map in App



Ice Millersburg Rd JP Salvage (54-020-25)

T32N, R02E, SEC. 14; T32N, R02E, SEC. 15; T32N, R02E, SEC. 22; T32N, R02E,

In response to the notice of sale to be held 10:00 a.m. (local time) on July 29, 2025, I am hereby submitting my sealed bid (firm offer) for the following forest products to be cut. Bids for individual species must be at or above the advertised price. All non-responsive bid forms may be rejected.

<u>PRODUCTS & SPECIES</u>	<u>ESTIMATED VOLUME*</u>	<u>ADVERTISED PRICE</u>	<u>BID PRICE/UNIT</u>
Sawtimber			
Red Pine	41.5 MBF	\$ 55.00/MBF	\$ _____
Pulpwood			
B. T. Aspen	13 Cords	\$ 7.90/Cord	\$ _____
Black Spruce	2 Cords	\$ 5.40/Cord	\$ _____
Jack Pine	1,662 Cords	\$ 6.05/Cord	\$ _____
Mixed Oak	110 Cords	\$ 9.70/Cord	\$ _____
Quaking Aspen	137 Cords	\$ 7.90/Cord	\$ _____
Red Maple	22 Cords	\$ 8.75/Cord	\$ _____
Red Pine	85 Cords	\$ 20.90/Cord	\$ _____
White Pine	21 Cords	\$ 12.95/Cord	\$ _____

*The volumes are statistically estimated within plus (+) or minus (-) 10.35 percent at 95% confidence level. These estimated volumes are final and not subject to adjustment. Prospective bidders are urged to examine this timber and to make their own estimates of quantity and quality.

I understand that any or all bids may be rejected. All bids must be signed and all bid items must be bid or the bid form may be rejected. I also understand that consideration and awarding a contract will be based upon my past performance and ability to complete the contract based upon equipment and staffing subject to my control .

FEDERAL ID: ____ - ____ - ____ or SOCIAL SECURITY NUMBER: ____ - ____ - ____

Company or individual bidding: _____

Company representative's name: _____

Address: _____

City: _____ State: _____ Zip: _____

IF AVAILABLE, PLEASE PLACE THE PERSONALIZED LABEL FROM YOUR PROSPECTUS IN THE ABOVE BOX.

Individual or company representative's signature: _____ Date: _____

Phone number : _____ Email (optional): _____

**THE WINNING BIDDER MUST COMPLETE THE VERIFICATION OF WORKER'S DISABILITY COMPENSATION ACT
COMPLIANCE (ON REVERSE SIDE IF DOUBLE SIDED) WITHIN 21 DAYS OF SALE AWARD DATE**



TIMBER SALE VERIFICATION OF WORKER'S DISABILITY COMPENSATION ACT COMPLIANCE

As required by Act 317, P.A. 1969 (Worker's Compensation) and
Part 5 of Act 451 of 1994, as amended.

FOR DEPARTMENT USE ONLY

Sale Number (XX - XXX - XX - XX)

Forest Management Unit:

VERIFICATION OF WORKER'S DISABILITY COMPENSATION ACT COMPLIANCE

- This verification must be completed and submitted within 21 days of contract award and prior to the issuance of the timber sale contract.
- In addition, if boxes 2B or 2C are checked, then Notice of Exclusion or Certificate of Insurance must be submitted within twenty-one (21) days of the contract award and prior to the issuance of the timber sale contract.
- All Information must be typed or printed except for written signatures.

Please Check Appropriate Categories:

1. My business is organized as (you **must** check one of the boxes below):
 - A. ☐ Sole Proprietorship (individual)
 - B. ☐ Partnership
 - C. ☐ Corporation
2. You **must** check one of the boxes below:
 - A. ☐ I certify my business is a sole proprietorship and it has no employees but the sole proprietor. I am not subject to the Worker's Compensation Laws.
 - B. ☐ I certify my business has satisfied its obligation to the Worker's Compensation Act through the use of an approved Notice of Exclusion (BWC-337, Rev. 5/96). I will provide a copy of the Notice of Exclusion within 21 days of the contract award. (For questions or a copy of the BWC-337, please call the Worker's Compensation Bureau at 517-322-1195).
 - C. ☐ I certify my business has a Worker's Compensation Policy. I will provide an original Certificate of Insurance within twenty-one (21) days of the contract award.
3. If you have checked item 2(A) or 2(B), you **must** indicate the number of **both** full-time and part-time employees, other than yourself, including family members and active partners (if none, you must enter "0").

_____ Full-time Employees

_____ Part-time Employees

Name of Business		Federal ID (or) Social Security No.
Address		Telephone ()
City	State	ZIP

I hereby certify that the above information is true and correct. I agree to notify the Michigan DNR of any changes that occur in factors affecting my coverage during any of my present and future operations.

Signature of Owner or Authorized Representative

Title

Date

Please complete the "SEALED BID" information on the next page

Ice and Dice Aspen Salvage (54-021-25)
T30N, R01E, SEC. 33; T30N, R01E, SEC. 34; Montmorency COUNTY

In response to the notice of sale to be held 10:00 a.m. (local time) on July 29, 2025, I am hereby submitting my sealed bid (firm offer) for the following forest products to be cut. Bids for individual species must be at or above the advertised price. All non-responsive bid forms may be rejected.

<u>PRODUCTS & SPECIES</u>	<u>ESTIMATED VOLUME*</u>	<u>ADVERTISED PRICE</u>	<u>BID PRICE/UNIT</u>
Sawtimber			
Basswood	5.2 MBF	\$ 35.00/MBF	\$ _____
Northern Pin Oak	22.6 MBF	\$ 61.00/MBF	\$ _____
Red Maple	20.1 MBF	\$ 34.00/MBF	\$ _____
Red Pine	3.4 MBF	\$ 78.00/MBF	\$ _____
White Pine	7.1 MBF	\$ 51.00/MBF	\$ _____
Pulpwood			
Basswood	5 Cords	\$ 11.75/Cord	\$ _____
Jack Pine	101 Cords	\$ 8.65/Cord	\$ _____
Mixed Aspen	2,126 Cords	\$ 11.30/Cord	\$ _____
Mixed Hardwood	439 Cords	\$ 12.55/Cord	\$ _____
Mixed Oak	104 Cords	\$ 13.85/Cord	\$ _____
Red Pine	18 Cords	\$ 29.90/Cord	\$ _____
White Pine	17 Cords	\$ 18.50/Cord	\$ _____

*The volumes are statistically estimated within plus (+) or minus (-) 24.82 percent at 95% confidence level. These estimated volumes are final and not subject to adjustment. Prospective bidders are urged to examine this timber and to make their own estimates of quantity and quality.

I understand that any or all bids may be rejected. All bids must be signed and all bid items must be bid or the bid form may be rejected. I also understand that consideration and awarding a contract will be based upon my past performance and ability to complete the contract based upon equipment and staffing subject to my control .

FEDERAL ID: ____ - ____ - ____ or SOCIAL SECURITY NUMBER: ____ - ____ - ____

Company or individual bidding: _____

Company representative's name: _____

Address: _____

City: _____ State: _____ Zip: _____

IF AVAILABLE, PLEASE PLACE THE PERSONALIZED LABEL FROM YOUR PROSPECTUS IN THE ABOVE BOX.

Individual or company representative's signature: _____ Date: _____

Phone number : _____ Email (optional): _____

**THE WINNING BIDDER MUST COMPLETE THE VERIFICATION OF WORKER'S DISABILITY COMPENSATION ACT
COMPLIANCE (ON REVERSE SIDE IF DOUBLE SIDED) WITHIN 21 DAYS OF SALE AWARD DATE**



TIMBER SALE VERIFICATION OF WORKER'S DISABILITY COMPENSATION ACT COMPLIANCE

As required by Act 317, P.A. 1969 (Worker's Compensation) and
Part 5 of Act 451 of 1994, as amended.

FOR DEPARTMENT USE ONLY

Sale Number (XX - XXX - XX - XX)

Forest Management Unit:

VERIFICATION OF WORKER'S DISABILITY COMPENSATION ACT COMPLIANCE

- This verification must be completed and submitted within 21 days of contract award and prior to the issuance of the timber sale contract.
- In addition, if boxes 2B or 2C are checked, then Notice of Exclusion or Certificate of Insurance must be submitted within twenty-one (21) days of the contract award and prior to the issuance of the timber sale contract.
- All Information must be typed or printed except for written signatures.

Please Check Appropriate Categories:

1. My business is organized as (you **must** check one of the boxes below):
 - A. ☐ Sole Proprietorship (individual)
 - B. ☐ Partnership
 - C. ☐ Corporation
2. You **must** check one of the boxes below:
 - A. ☐ I certify my business is a sole proprietorship and it has no employees but the sole proprietor. I am not subject to the Worker's Compensation Laws.
 - B. ☐ I certify my business has satisfied its obligation to the Worker's Compensation Act through the use of an approved Notice of Exclusion (BWC-337, Rev. 5/96). I will provide a copy of the Notice of Exclusion within 21 days of the contract award. (For questions or a copy of the BWC-337, please call the Worker's Compensation Bureau at 517-322-1195).
 - C. ☐ I certify my business has a Worker's Compensation Policy. I will provide an original Certificate of Insurance within twenty-one (21) days of the contract award.
3. If you have checked item 2(A) or 2(B), you **must** indicate the number of **both** full-time and part-time employees, other than yourself, including family members and active partners (if none, you must enter "0").

_____ Full-time Employees

_____ Part-time Employees

Name of Business		Federal ID (or) Social Security No.
Address		Telephone ()
City	State	ZIP

I hereby certify that the above information is true and correct. I agree to notify the Michigan DNR of any changes that occur in factors affecting my coverage during any of my present and future operations.

Signature of Owner or Authorized Representative

Title

Date

Please complete the "SEALED BID" information on the next page

Ice C111 Lowland Aspen Salvage (54-023-25)
T32N, R06E, SEC. 14; Alpena COUNTY

In response to the notice of sale to be held 10:00 a.m. (local time) on July 29, 2025, I am hereby submitting my sealed bid (firm offer) for the following forest products to be cut. Bids for individual species must be at or above the advertised price. All non-responsive bid forms may be rejected.

<u>PRODUCTS & SPECIES</u>	<u>ESTIMATED VOLUME*</u>	<u>ADVERTISED PRICE</u>	<u>BID PRICE/UNIT</u>
Pulpwood			
Balsam Fir	150 Cords	\$ 10.15/Cord	\$ _____
Mixed Aspen	1,604 Cords	\$ 10.75/Cord	\$ _____
Mixed Hardwood	31 Cords	\$ 11.90/Cord	\$ _____
Red Maple	47 Cords	\$ 11.90/Cord	\$ _____

*The volumes are statistically estimated within plus (+) or minus (-) 19.56 percent at 95% confidence level. These estimated volumes are final and not subject to adjustment. Prospective bidders are urged to examine this timber and to make their own estimates of quantity and quality.

I understand that any or all bids may be rejected. All bids must be signed and all bid items must be bid or the bid form may be rejected. I also understand that consideration and awarding a contract will be based upon my past performance and ability to complete the contract based upon equipment and staffing subject to my control .

FEDERAL ID: ____ - ____ - ____ or SOCIAL SECURITY NUMBER: ____ - ____ - ____
Company or individual bidding: _____
Company representative's name: _____
Address: _____
City: _____ State: _____ Zip: _____

IF AVAILABLE, PLEASE PLACE THE PERSONALIZED LABEL FROM YOUR PROSPECTUS IN THE ABOVE BOX.

Individual or company representative's signature: _____ Date: _____

Phone number : _____ Email (optional): _____

**THE WINNING BIDDER MUST COMPLETE THE VERIFICATION OF WORKER'S DISABILITY COMPENSATION ACT
COMPLIANCE (ON REVERSE SIDE IF DOUBLE SIDED) WITHIN 21 DAYS OF SALE AWARD DATE**



TIMBER SALE VERIFICATION OF WORKER'S DISABILITY COMPENSATION ACT COMPLIANCE

As required by Act 317, P.A. 1969 (Worker's Compensation) and
Part 5 of Act 451 of 1994, as amended.

FOR DEPARTMENT USE ONLY

Sale Number (XX - XXX - XX - XX)

Forest Management Unit:

VERIFICATION OF WORKER'S DISABILITY COMPENSATION ACT COMPLIANCE

- This verification must be completed and submitted within 21 days of contract award and prior to the issuance of the timber sale contract.
- In addition, if boxes 2B or 2C are checked, then Notice of Exclusion or Certificate of Insurance must be submitted within twenty-one (21) days of the contract award and prior to the issuance of the timber sale contract.
- All information must be typed or printed except for written signatures.

Please Check Appropriate Categories:

1. My business is organized as (you **must** check one of the boxes below):
 - A. ☐ Sole Proprietorship (individual)
 - B. ☐ Partnership
 - C. ☐ Corporation
2. You **must** check one of the boxes below:
 - A. ☐ I certify my business is a sole proprietorship and it has no employees but the sole proprietor. I am not subject to the Worker's Compensation Laws.
 - B. ☐ I certify my business has satisfied its obligation to the Worker's Compensation Act through the use of an approved Notice of Exclusion (BWC-337, Rev. 5/96). I will provide a copy of the Notice of Exclusion within 21 days of the contract award. (For questions or a copy of the BWC-337, please call the Worker's Compensation Bureau at 517-322-1195).
 - C. ☐ I certify my business has a Worker's Compensation Policy. I will provide an original Certificate of Insurance within twenty-one (21) days of the contract award.
3. If you have checked item 2(A) or 2(B), you **must** indicate the number of **both** full-time and part-time employees, other than yourself, including family members and active partners (if none, you must enter "0").

_____ Full-time Employees

_____ Part-time Employees

Name of Business		Federal ID (or) Social Security No.
Address		Telephone ()
City	State	ZIP

I hereby certify that the above information is true and correct. I agree to notify the Michigan DNR of any changes that occur in factors affecting my coverage during any of my present and future operations.

Signature of Owner or Authorized Representative

Title

Date

Please complete the "SEALED BID" information on the next page